


**LEGEND:**

381 LINE: 

381 STR: 

DWG REV	EPN/DESCRIPTION	CONT/PE#	DATE	DRN	CHKD	APPR
1	SUBMITTED TO DOE		9/20/22	CTS	-	CJN

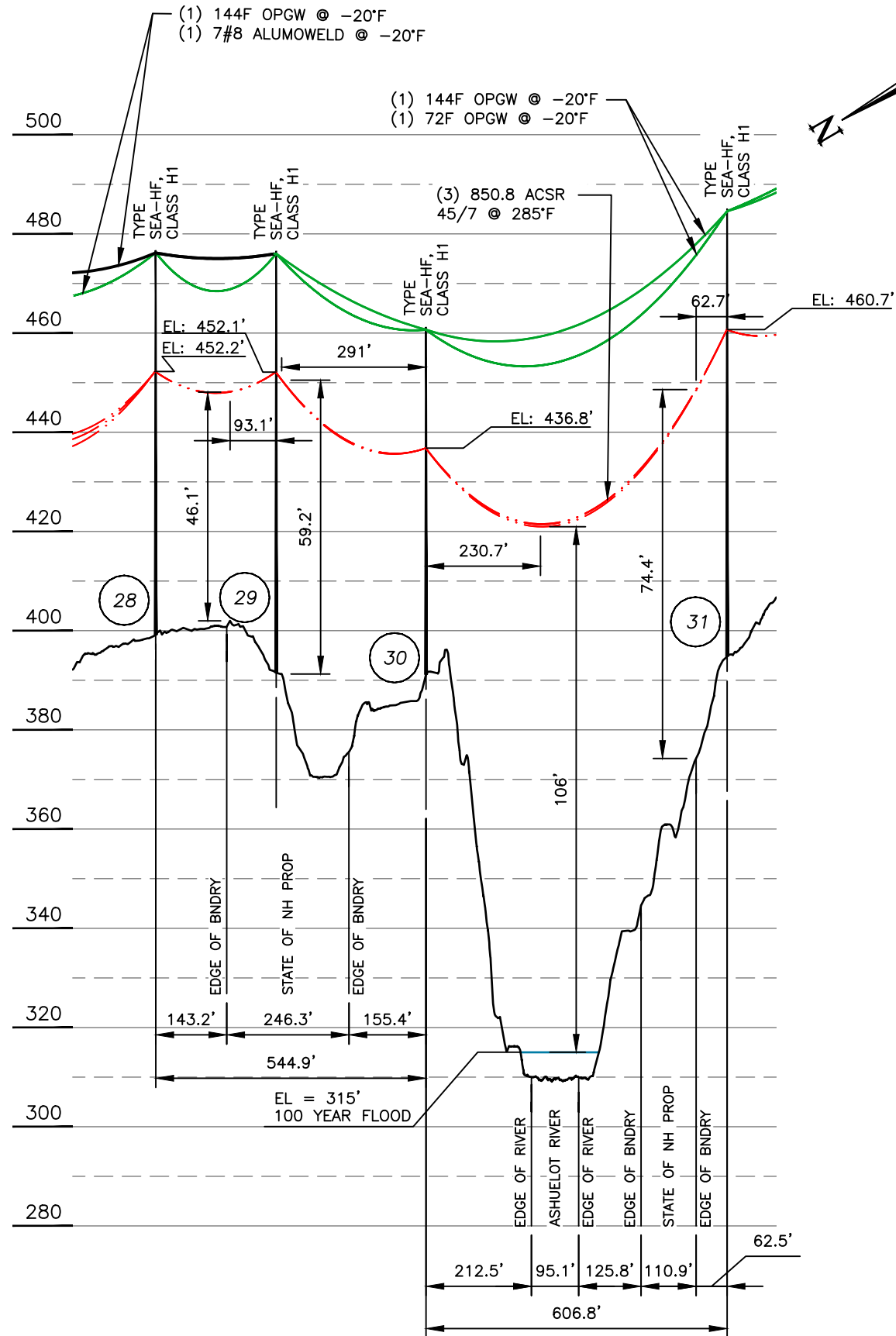
**EVERSOURCE ENERGY**

381, 345kV LINE  
 WATER/STATE CROSSING, LOCATION PLAN  
 WINCHESTER, NEW HAMPSHIRE  
 EXHIBIT 1

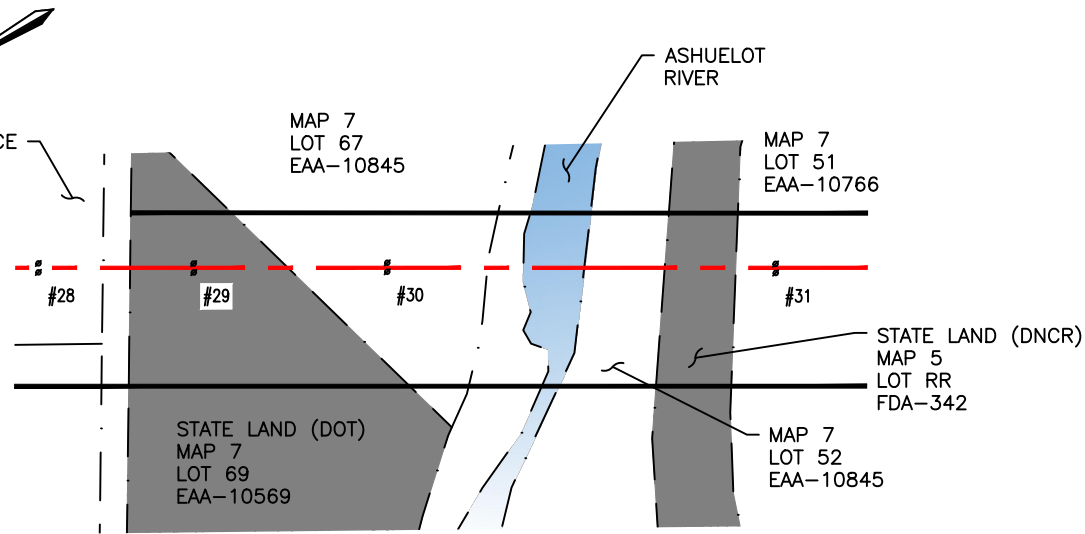
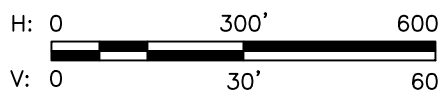
T	1
DRAWN CTS	
ENGINEER CJN	
CHECKED -	
APPROVED CJN	
DATE 9/20/2022	

SCALE: 1" = 5000'  
 FILE: 04309-81001.DWG  
 DRAWING NO. 04309-81001

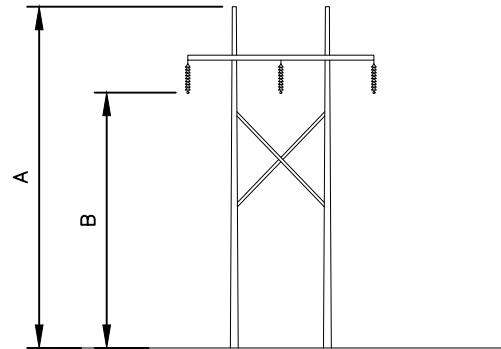
10/18/2022 3:42 PM - spensct - C:\Users\spensct\appdata\local\temp\AcPublish\_28544\04309-81001.dwg - EXHIBIT 2 (WATER CROSSING) ES VER: 12/2016



**PROFILE VIEW**  
SCALE: HORZ 1" = 300'  
VERT 1" = 30'



**PLAN VIEW**  
SCALE: 1" = 300'



STRUCTURE 28, 29, 30, 31  
TYPE SEA-HF  
STR'S 28, 29, 30, 31: ARE AN EVERSOURCE H-FRAME, SINGLE CIRCUIT STEEL POLES, HORIZONTAL CONFIGURATION.

STRUCTURE DETAILS				
STRUCTURE	TYPE	MATERIAL	A	B
28	SEA-HF	STEEL	77.5	53.1
29	SEA-HF	STEEL	85	60.6
30	SEA-HF	STEEL	70	45.6
31	SEA-HF	STEEL	90.2	65.8

**STRUCTURE DETAIL**  
SCALE: NTS

**LEGEND:**

- #28 STRUCTURE (WITH GUYS)
- PROPERTY BOUNDARY
- 381 LINE 345KV LINE, C OF CONSTRUCTION
- LIMITS OF EVERSOURCE RIGHT OF WAY
- WATERBODY

STRUCTURE LOCATION		
STRUCTURE	LONGITUDE	LATITUDE
28	-72.45802718	42.79339951
29	-72.45847631	42.79282083
30	-72.45902806	42.79209876
31	-72.46015115	42.79065384

NESC VERTICAL CLEARANCE (FT) FROM TABLE 232.1, C2-2012	
NATURE OF SURFACE UNDERNEATH WIRES, CONDUCTORS OR CABLES	345kV
WATER AREAS NOT SUITABLE FOR SAIL BOATING OR WHERE SAIL BOATING IS PROHIBITED	23.2
TRACK RAILS OF RAILROADS	32.8
OTHER AREAS TRAVERSED BY VEHICLES, SUCH AS CULTIVATED, GRAZING, FOREST, AND ORCHARD LANDS, INDUSTRIAL SITES, COMMERCIAL SITES, ETC	24.8

CABLE SCHEDULE						
WIRE	QTY OF CABLES	DESCRIPTION	DESIGN CONDITIONS			
			MAX DESIGN TENSION (lb)	TEMP (°F)	ICE (in)	WIND (psf)
CONDUCTOR	3	850.8 ACSR 45/7 BUZZARD	6700	0	0.5	4
STATIC	1	7#8 ALUMOWELD	4000	0	0.5	4
OPGW	1	0.646" 144F OPGW	4500	0	0.5	4

**NOTES:**

- PARCEL INFORMATION PROVIDED BY NH GRANIT.
- ELEVATIONS REFERENCED TO THE NORTH AMERICAN VERTICAL DATUM OF 1988.
- 100 YEAR FLOOD ELEVATION FROM THE FEMA FLOOD MAP SERVICE CENTER, NATIONAL FLOOD HAZARD LAYER FIRMETTE, 01/16/2020.

		T	1
		DRAWN	CTS
381, 345kV LINE ASHUELOT RIVER & STATE LAND, CROSSING WINCHESTER, NEW HAMPSHIRE EXHIBIT 2		ENGINEER	CJN
		CHECKED	-
SCALE AS SHOWN FILE: 04309-81001.DWG IMAGE:		APPROVED	CJN
		DATE	9/20/2022
DRAWING NO. 04309-81001		DWG REV 1 SUBMITTED TO DOE 9/20/22 CTS - CJN EPN/DESCRIPTION CONT/PE# DATE DRN CHKD APPR	