

WATERBODY CROSSING

LEGEND:

- W179 LINE:
- W179 STR:

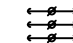




DWG REV	EPN/DESCRIPTION	CONT/PE#	DATE	DRN	CHKD	APPR
1	ISSUE TO DOE		10/18	CB	BS	JF

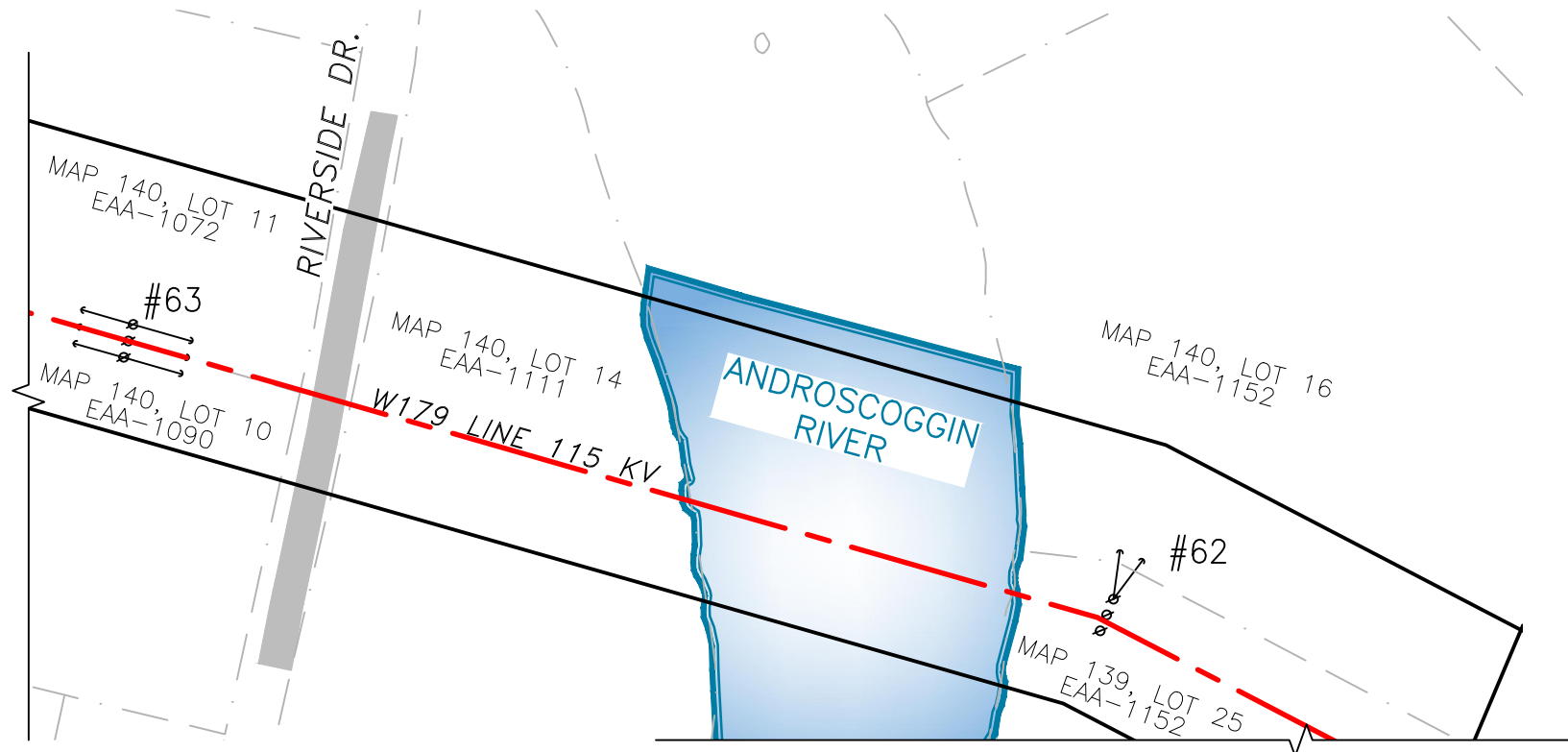
<h1 style="margin: 0;">EVERSOURCE</h1> <h2 style="margin: 0;">ENERGY</h2>	T	1
	DRAWN CB	ENGINEER AJW
<p>W179, 115kV LINE ANDROSCOGGIN RIVER WATER CROSSING LOCATION PLAN BERLIN, NEW HAMPSHIRE EXHIBIT 1</p>	CHECKED BS	APPROVED JF
	DATE 10/18/2022	
	DRAWING NO. 04097-81001	
SCALE 1" = 1000'	FILE: 04097-81001.DWG IMAGE:	

BERLIN, NH



LEGEND:

-  STRUCTURE (WITH GUYS)
#63
-  **W179 LINE 115KV** LINE, ϕ OF CONSTRUCTION
-  LIMITS OF EVERSOURCE RIGHT OF WAY
-  ANDROSCOGGIN RIVER
-  PROPERTY BOUNDARY



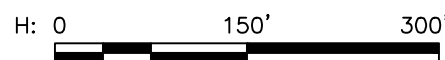
PLAN VIEW

SCALE: 1" = 150'

NOTES:

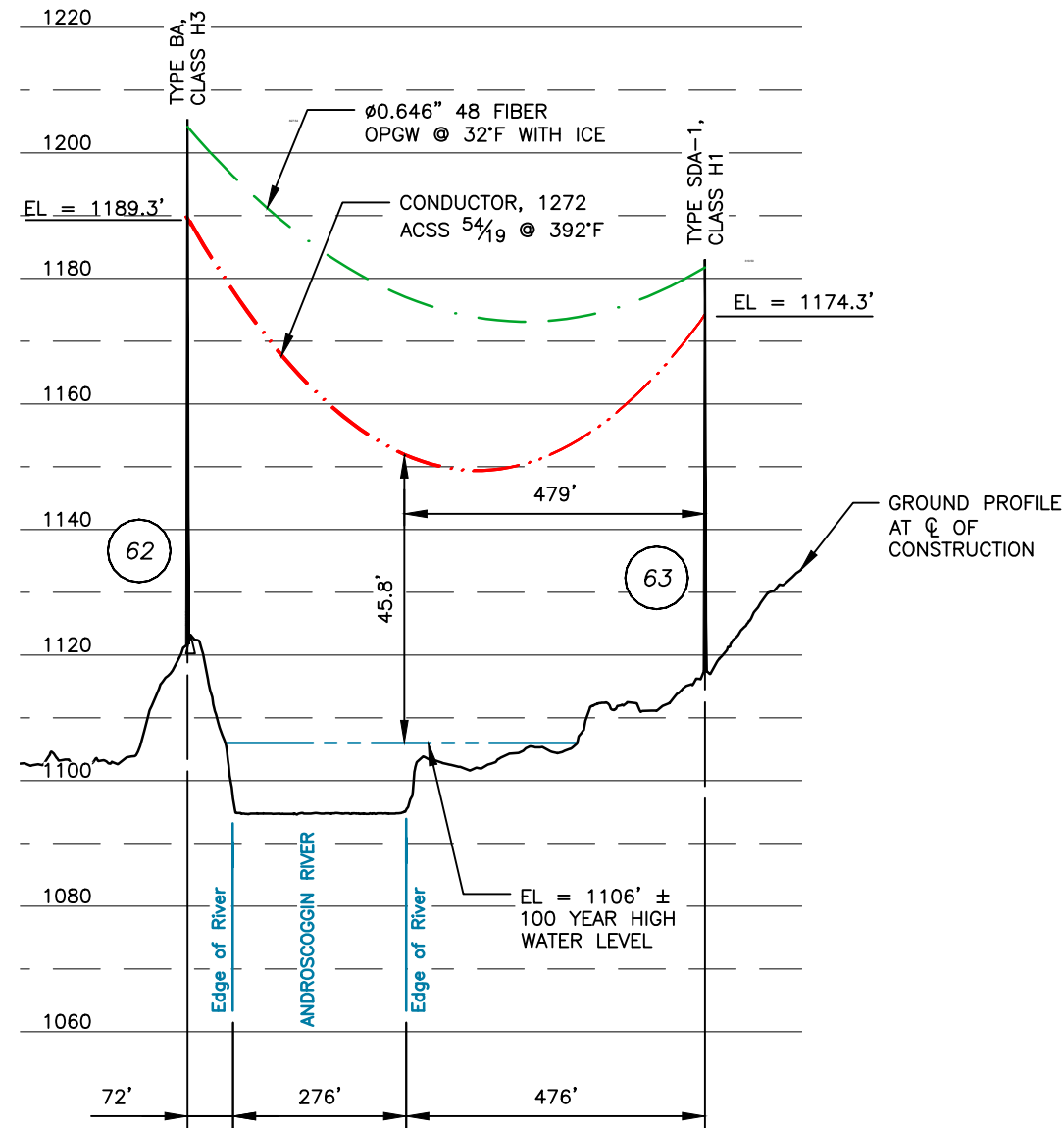
1. PARCEL INFORMATION PROVIDED BY NH GRANIT.
2. ELEVATIONS REFERENCED TO THE NORTH AMERICAN VERTICAL DATUM OF 1988.
3. 100 YEAR FLOOD ELEVATION FROM THE FEMA FLOOD MAP SERVICE CENTER, NATIONAL FLOOD HAZARD LAYER FIRMETTE, 33007C0818D, DATED FEBRUARY 20, 2013.

STRUCTURE LOCATION		
STRUCTURE	LONGITUDE	LATITUDE
62	-71.1564164	44.50817897
63	-71.15947482	44.50878118



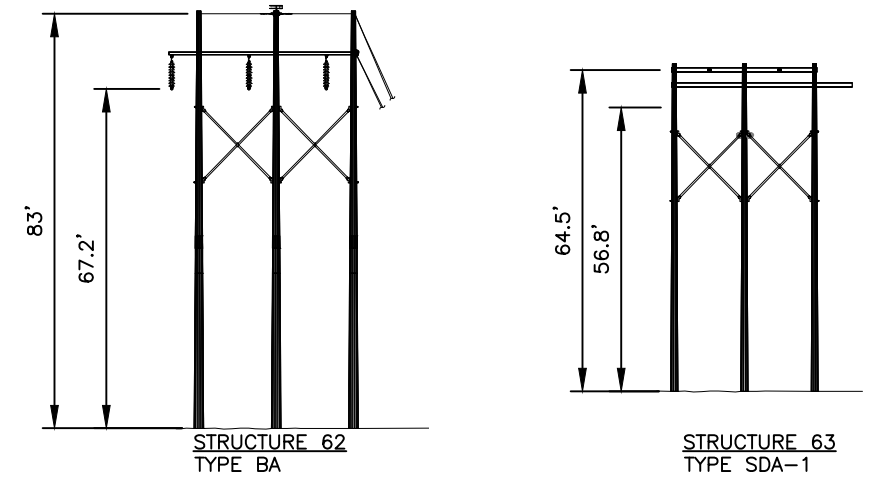
DWG REV	ISSUE TO DATE	EPN/DESCRIPTION	CONT/PE#	DATE	DRN	CHKD	APPR
1				10/18	CB	BS	JF

	T 1
	DRAWN CB
	ENGINEER AJW
	CHECKED BS
	APPROVED JF
	DATE 10/18/2022
W179, 115kV LINE ANDROSCOGGIN RIVER WATER CROSSING BERLIN, NEW HAMPSHIRE EXHIBIT 2	
SCALE AS SHOWN	FILE: 04097-81002.DWG IMAGE:
DRAWING NO. 04097-81002	



PROFILE VIEW

SCALE: HORZ 1" = 300'
VERT 1" = 30'



STR 62: IS AN EVERSOURCE TYPE BA, SINGLE CIRCUIT STEEL POLE RUNNING ANGLE, HORIZONTAL CONFIG., GUYED.

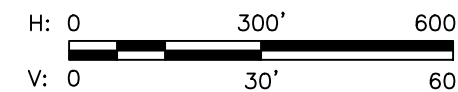
STR 63: IS AN EVERSOURCE TYPE SDA-1, SINGLE CIRCUIT STEEL POLE DEAD END ANGLE, HORIZONTAL CONFIG., GUYED.

STRUCTURE DETAIL

SCALE: NTS

NESC VERTICAL CLEARANCE (FT) FROM TABLE 232.1, C2-2012	
NATURE OF SURFACE UNDERNEATH WIRES, CONDUCTORS OR CABLES	115kV
WATER AREAS NOT SUITABLE FOR SAIL BOATING OR WHERE SAIL BOATING IS PROHIBITED	18.6

CABLE SCHEDULE						
WIRE	QTY OF CABLES	DESCRIPTION	DESIGN CONDITIONS			
			MAX DESIGN TENSION (lb)	TEMP (°F)	ICE (in)	WIND (psf)
CONDUCTOR	3	ACSS, 1272 KCMIL 5 1/2, PHEASANT	12000	0	0.5	4
OPGW	2	48F Ø0.646" OPGW	7000	0	0.5	4



EVERSOURCE ENERGY

W179, 115kV LINE
ANDROSCOGGIN RIVER WATER CROSSING
BERLIN, NEW HAMPSHIRE
EXHIBIT 3

DRAWN CB	T 1
ENGINEER AJW	CHECKED BS
APPROVED JF	DATE 10/18/2022

DWC REV	ISSUE TO DATE	EPN/DESCRIPTION	CONT/PE#	DATE	DRN	CHKD	APPR
1				10/18	CB	BS	JF

SCALE AS SHOWN | FILE: 04097-81003.DWG | DRAWING NO. 04097-81003