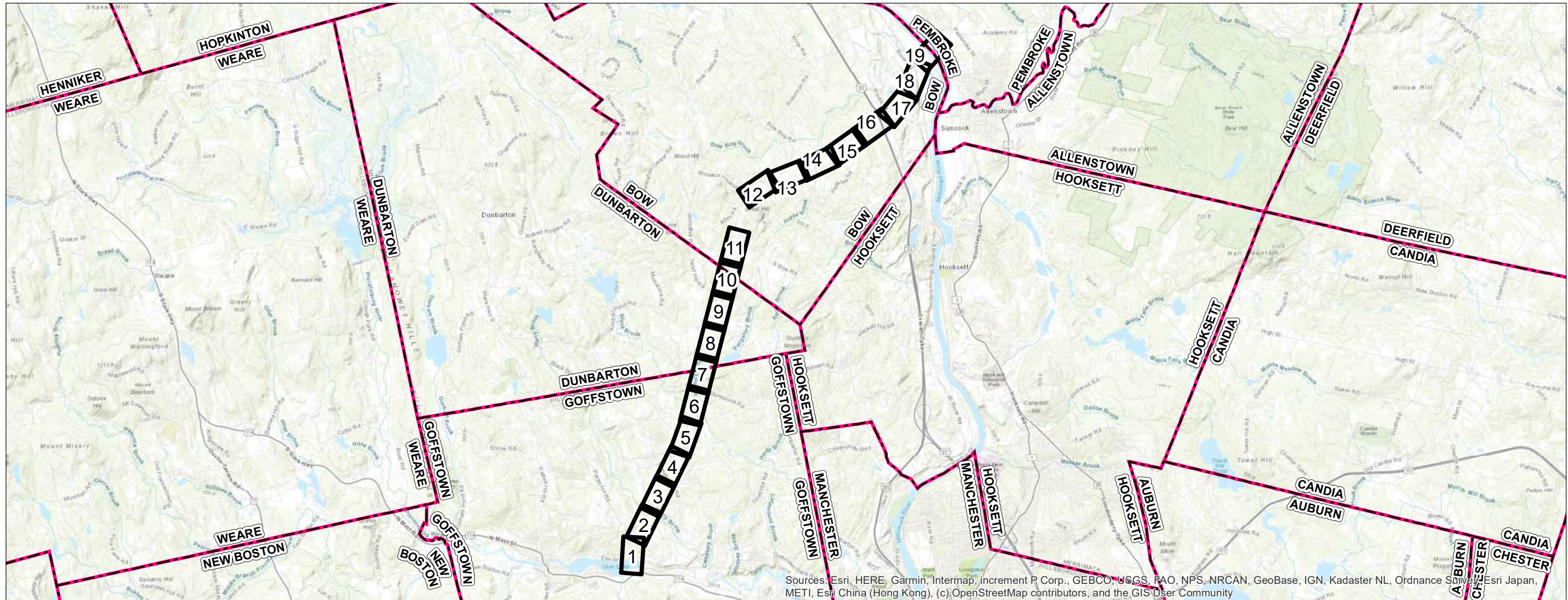


# 2023 C196, Q171, and A253 Transmission Line - Structure Replacement Project

GOFFSTOWN, DUNBARTON, AND BOW, NEW HAMPSHIRE  
Environmental Resources Map

Date: December 20, 2022



Sources: Esri, HERE, Garmin, Intermap, increment P Corp., GEBCO, USGS, FAO, NPS, NRCAN, GeoBase, IGN, Kadaster NL, Ordnance Survey, Esri Japan, METI, Esri China (Hong Kong), (c) OpenStreetMap contributors, and the GIS User Community



0 1 2 Miles

PREPARED FOR:  
**EVERSOURCE**  
ENERGY

13 Legends Drive  
Hooksett, NH 03106

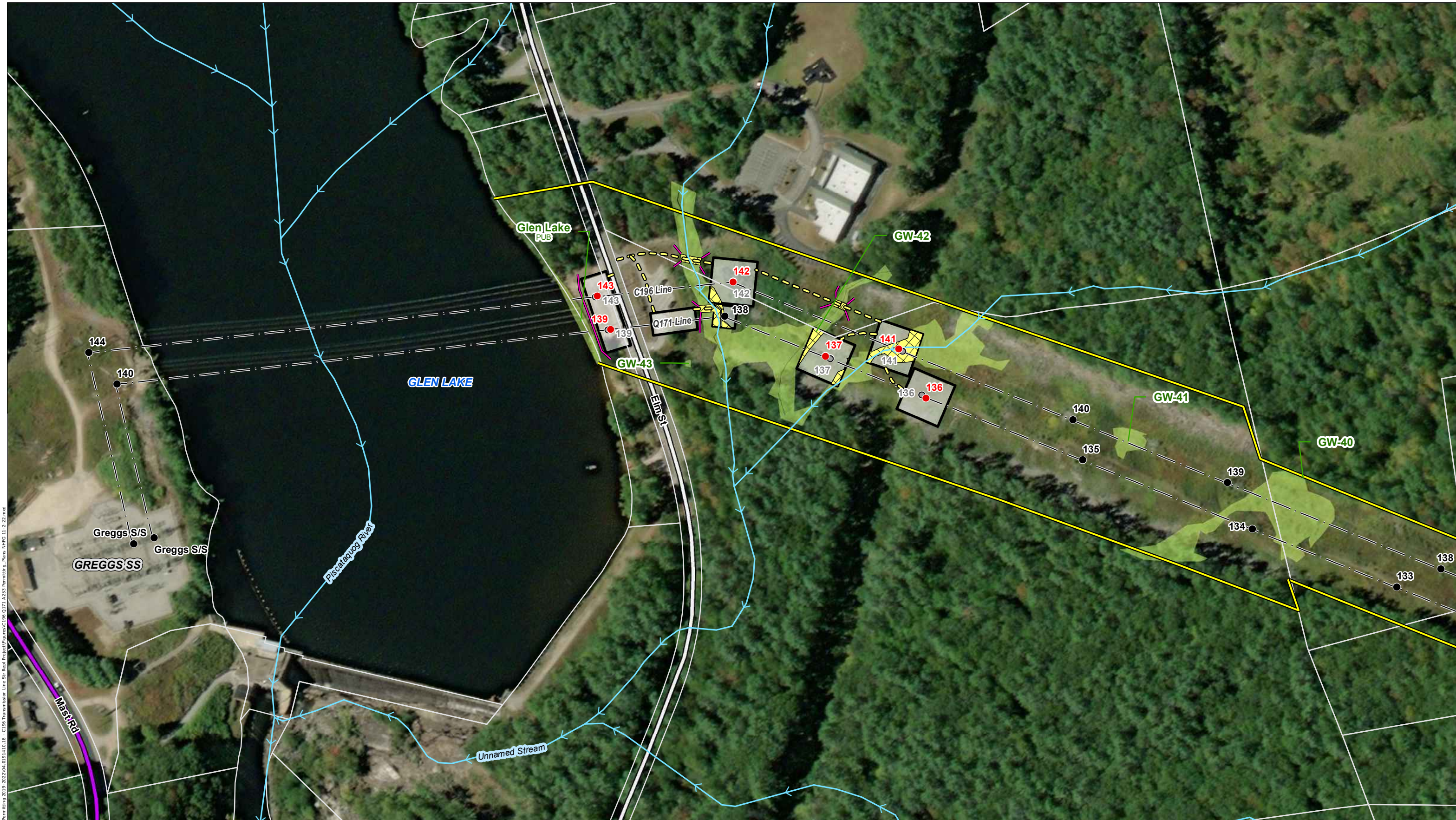
INDEX OF FIGURES  
Title Sheet / Index Map  
Map Sheets 1-19  
Notesheets 1-8

NO.	DATE	REVISIONS

PREPARED BY:



**GZA** GeoEnvironmental, Inc.  
Engineers and Scientists  
[www.gza.com](http://www.gza.com)



Path: P:\Jobs\01914010\04.0191410.00 - EE Sling Permitting 2019-2022\04.0191410.18 - C196 Transmission Line Str Repl Project\Figures\C196 Q171 A253 Permitting Plans NHFG 11-2-22.mxd



● PROPOSED STRUCTURE REPLACEMENT	— PROPOSED ACCESS	■ WORK PAD
● EXISTING STRUCTURE NO PROPOSED WORK	— EXISTING ACCESS	■ ADDITIONAL SCOPE WORK PAD
● EXISTING STRUCTURE TO BE REMOVED	— OFF-ROW/SECONDARY ACCESS	■ TOWN BOUNDARY
● ADDITIONAL PROPOSED STRUCTURE REPLACEMENT	— ADD' ACCESS ROUTE	— TOWN MAINTAINED ROAD
— APPROXIMATE ROW	— EXISTING TRANSMISSION LINE	— STATE MAINTAINED ROADS
— EROSION CONTROL	■ ADDITIONAL TEMPORARY WETLAND MATTING	— PRIVATE ROAD
— EXTENT OF WETLAND DELINEATION	■ TEMPORARY WETLAND IMPACT	■ FIELD DELINEATED WETLAND
— RAILROAD	— PARCEL BOUNDARY	■ POTENTIAL VERNAL POOL
— NHD FLOWLINES	■ EVERSOURCE OWNED PARCEL	
	■ TEMPORARY UPLAND MATTING	

This mapping product has been created to comply with submittal requirements to obtain certain regulatory approvals and, as such, there is no reliance on the information contained herein for any other purpose.

1 inch = 200 feet  
 0 50 100 200 Feet

<b>EVERSOURCE ENERGY</b>		
<b>C196 , Q171, and A253 Transmission Line Structure Replacement Project</b>		
Goffstown, NH		MAP SHEET
Date: December, 2022		<b>1 OF 19</b>
NO.	DATE	
		REVISIONS
		04.0191410.42



Path: P:\Jobs\01914010\04.0191410.00 - EE Sling Permitting 2019-2022\02.04.0191410.18 - C196 Transmission Line Str Regl Project\Figures\C196 Q171 A253 Permitting Plans NHFG 11-2-22.mxd



● PROPOSED STRUCTURE REPLACEMENT	— PROPOSED ACCESS	■ WORK PAD
● EXISTING STRUCTURE NO PROPOSED WORK	— EXISTING ACCESS	■ ADDITIONAL SCOPE WORK PAD
● EXISTING STRUCTURE TO BE REMOVED	— OFF-ROW/SECONDARY ACCESS	■ TOWN BOUNDARY
● ADDITIONAL PROPOSED STRUCTURE REPLACEMENT	— ADD' ACCESS ROUTE	— TOWN MAINTAINED ROAD
— APPROXIMATE ROW	— EXISTING TRANSMISSION LINE	— STATE MAINTAINED ROADS
— EROSION CONTROL	■ ADDITIONAL TEMPORARY WETLAND MATTING	— PRIVATE ROAD
— EXTENT OF WETLAND DELINEATION	■ TEMPORARY WETLAND IMPACT	■ FIELD DELINEATED WETLAND
— RAILROAD	— PARCEL BOUNDARY	■ POTENTIAL VERNAL POOL
— NHD FLOWLINES	■ EVERSOURCE OWNED PARCEL	
	■ TEMPORARY UPLAND MATTING	

This mapping product has been created to comply with submittal requirements to obtain certain regulatory approvals and, as such, there is no reliance on the information contained herein for any other purpose.

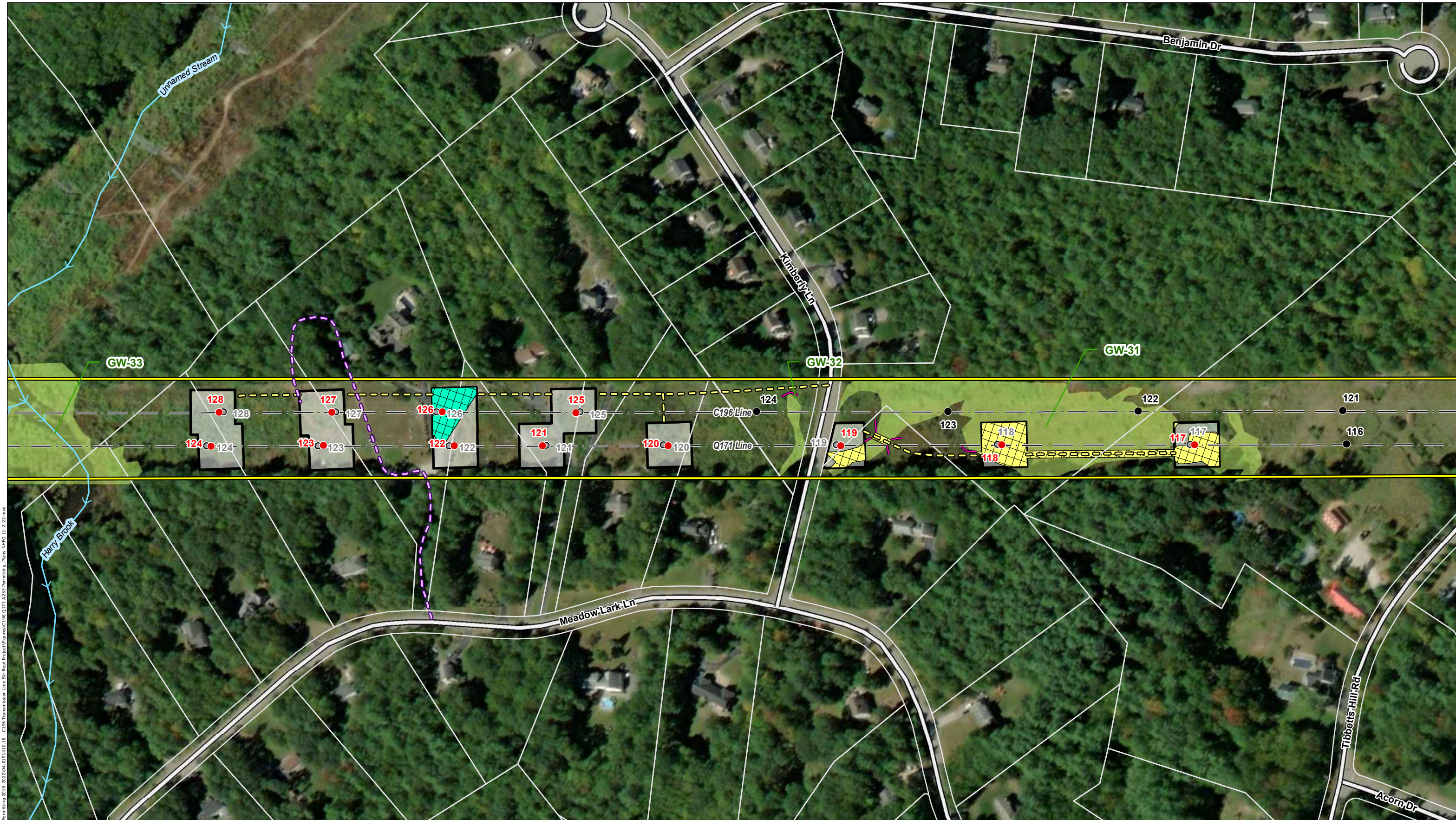
1 inch = 200 feet

NO.	DATE	REVISIONS

**EVERSOURCE ENERGY**

**C196, Q171, and A253 Transmission Line Structure Replacement Project**

Goffstown, NH	MAP SHEET
Date: December, 2022	<b>2 OF 19</b>
04.0191410.42	

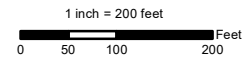


Path: P:\Jobs\01914010\04\0191410.00 - E-Sub Permitting 2019-2022\04\0191410.18 - C196 Transmission Line Str Repl Project\Figures\C196 Q171 A253 Permitting Plans NHFG 11-2-22.mxd

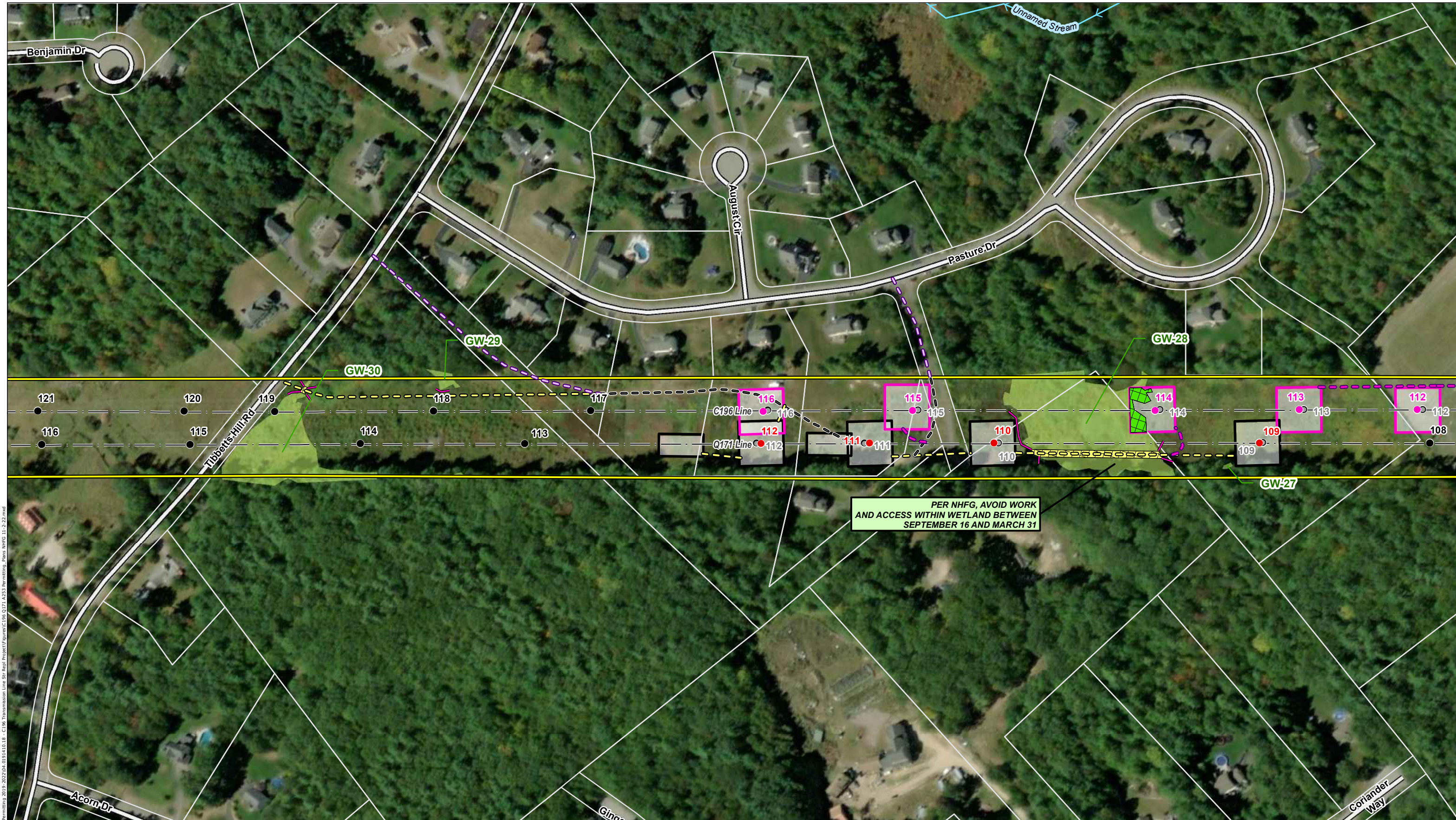


- |  |   |   |
|--|---|---|
| <ul style="list-style-type: none"> <li>● PROPOSED STRUCTURE REPLACEMENT</li> <li>● EXISTING STRUCTURE NO PROPOSED WORK</li> <li>● EXISTING STRUCTURE TO BE REMOVED</li> <li>● ADDITIONAL PROPOSED STRUCTURE REPLACEMENT</li> <li>— APPROXIMATE ROW</li> <li>— EROSION CONTROL</li> <li>— EXTENT OF WETLAND DELINEATION</li> <li>— RAILROAD</li> <li>— NHD FLOWLINES</li> </ul> | <ul style="list-style-type: none"> <li>— PROPOSED ACCESS</li> <li>— EXISTING ACCESS</li> <li>— OFF-ROW/SECONDARY ACCESS</li> <li>— ADD' ACCESS ROUTE</li> <li>— EXISTING TRANSMISSION LINE</li> <li>— ADDITIONAL TEMPORARY WETLAND MATTING</li> <li>— TEMPORARY WETLAND IMPACT</li> <li>— PARCEL BOUNDARY</li> <li>— EVERSOURCE OWNED PARCEL</li> <li>— TEMPORARY UPLAND MATTING</li> </ul> | <ul style="list-style-type: none"> <li>— WORK PAD</li> <li>— ADDITIONAL SCOPE WORK PAD</li> <li>— TOWN BOUNDARY</li> <li>— TOWN MAINTAINED ROAD</li> <li>— STATE MAINTAINED ROADS</li> <li>— PRIVATE ROAD</li> <li>— FIELD DELINEATED WETLAND</li> <li>— POTENTIAL VERNAL POOL</li> </ul> |
|--|---|---|

*This mapping product has been created to comply with submittal requirements to obtain certain regulatory approvals and, as such, there is no reliance on the information contained herein for any other purpose.*



		<b>EVERSOURCE ENERGY</b>	
		<b>C196, Q171, and A253 Transmission Line Structure Replacement Project</b>	
		Goffstown, NH	MAP SHEET
		Date: December, 2022	3 OF 19
NO.	DATE	REVISIONS	
		04.0191410.42	



Path: P:\Jobs\01914010\04.0191410.00 - E-Sub Permitting 2019 - 2022\04.0191410.18 - C196 Transmission Line Str. Repl. Project\Figures\C196 Q171 A253 Permitting Plans NHFG 11-2-22.mxd



● PROPOSED STRUCTURE REPLACEMENT	— PROPOSED ACCESS	▭ WORK PAD
● EXISTING STRUCTURE NO PROPOSED WORK	— EXISTING ACCESS	▭ ADDITIONAL SCOPE WORK PAD
● EXISTING STRUCTURE TO BE REMOVED	— OFF-ROW/SECONDARY ACCESS	▭ TOWN BOUNDARY
● ADDITIONAL PROPOSED STRUCTURE REPLACEMENT	— ADD' ACCESS ROUTE	▭ TOWN MAINTAINED ROAD
— APPROXIMATE ROW	— EXISTING TRANSMISSION LINE	▭ STATE MAINTAINED ROADS
— EROSION CONTROL	▭ ADDITIONAL TEMPORARY WETLAND MATTING	▭ PRIVATE ROAD
— EXTENT OF WETLAND DELINEATION	▭ TEMPORARY WETLAND IMPACT	▭ POTENTIAL VERNAL POOL
— RAILROAD	▭ PARCEL BOUNDARY	
— NHD FLOWLINES	▭ EVERSOURCE OWNED PARCEL	
	▭ TEMPORARY UPLAND MATTING	

This mapping product has been created to comply with submittal requirements to obtain certain regulatory approvals and, as such, there is no reliance on the information contained herein for any other purpose.

1 inch = 200 feet

0 50 100 200 Feet

<b>EVSOURCE ENERGY</b>		
<b>C196, Q171, and A253 Transmission Line Structure Replacement Project</b>		
Goffstown, NH		MAP SHEET
Date: December, 2022		<b>4 OF 19</b>
NO.	DATE	
REVISIONS		04.0191410.42

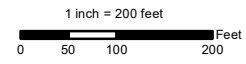


Path: P:\Jobs\01914010\04.0191410.00 - EE Siting Permitting 2019-2022\04.0191410.18 - C196 Transmission Line Str Repl Project\Figures\C196 Q171 A253 Permitting Plans NHFG 11-2-22.mxd

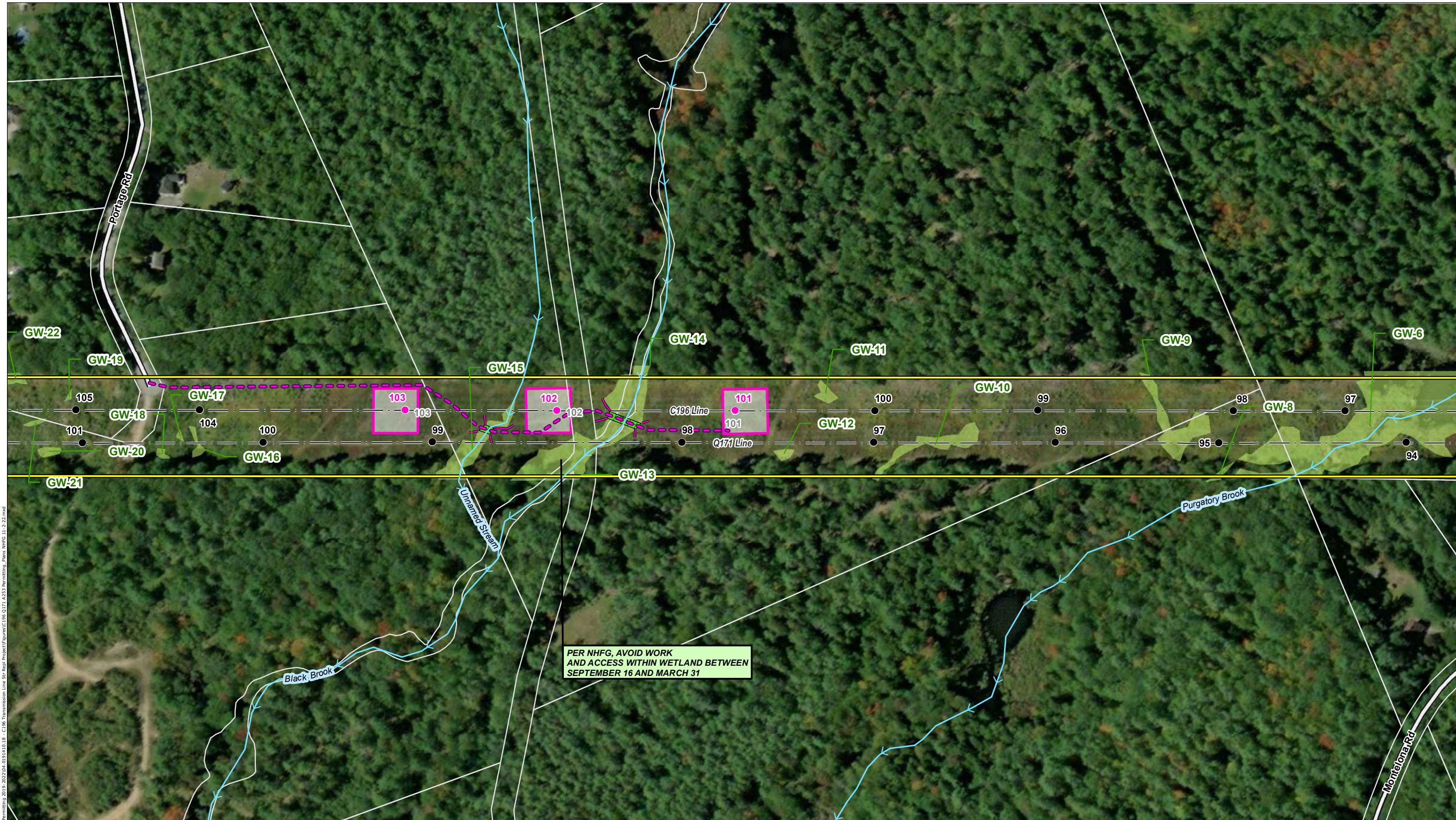


- |  |   |   |
|--|---|---|
| <ul style="list-style-type: none"> <li>● PROPOSED STRUCTURE REPLACEMENT</li> <li>● EXISTING STRUCTURE NO PROPOSED WORK</li> <li>● EXISTING STRUCTURE TO BE REMOVED</li> <li>● ADDITIONAL PROPOSED STRUCTURE REPLACEMENT</li> <li>— APPROXIMATE ROW</li> <li>— EROSION CONTROL</li> <li>— EXTENT OF WETLAND DELINEATION</li> <li>— RAILROAD</li> <li>— NHD FLOWLINES</li> </ul> | <ul style="list-style-type: none"> <li>— PROPOSED ACCESS</li> <li>— EXISTING ACCESS</li> <li>— OFF-ROW/SECONDARY ACCESS</li> <li>— ADD' ACCESS ROUTE</li> <li>— EXISTING TRANSMISSION LINE</li> <li>— ADDITIONAL TEMPORARY WETLAND MATTING</li> <li>— TEMPORARY WETLAND IMPACT</li> <li>— PARCEL BOUNDARY</li> <li>— EVERSOURCE OWNED PARCEL</li> <li>— TEMPORARY UPLAND MATTING</li> </ul> | <ul style="list-style-type: none"> <li>— WORK PAD</li> <li>— ADDITIONAL SCOPE WORK PAD</li> <li>— TOWN BOUNDARY</li> <li>— TOWN MAINTAINED ROAD</li> <li>— STATE MAINTAINED ROADS</li> <li>— PRIVATE ROAD</li> <li>— FIELD DELINEATED WETLAND</li> <li>— POTENTIAL VERNAL POOL</li> </ul> |
|--|---|---|

*This mapping product has been created to comply with submittal requirements to obtain certain regulatory approvals and, as such, there is no reliance on the information contained herein for any other purpose.*



		<b>EVERSOURCE ENERGY</b>	
		<b>C196, Q171, and A253 Transmission Line Structure Replacement Project</b>	
		Goffstown, NH	MAP SHEET
		Date: December, 2022	<b>5 OF 19</b>
NO.	DATE	REVISIONS	



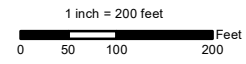
Path: P:\Jobs\0191404\0191410\_00 - EE Siting Permitting 2019-2022\04\_0191410\_18 - C196 Transmission Line Str Repl Project\Figures\C196 Q171 A253 Permitting Plans NHFG 11-2-22.mxd



- |  |   |   |
|--|---|---|
| <ul style="list-style-type: none"> <li>● PROPOSED STRUCTURE REPLACEMENT</li> <li>● EXISTING STRUCTURE NO PROPOSED WORK</li> <li>● EXISTING STRUCTURE TO BE REMOVED</li> <li>● ADDITIONAL PROPOSED STRUCTURE REPLACEMENT</li> <li>— APPROXIMATE ROW</li> <li>— EROSION CONTROL</li> <li>— EXTENT OF WETLAND DELINEATION</li> <li>— RAILROAD</li> <li>— NHD FLOWLINES</li> </ul> | <ul style="list-style-type: none"> <li>— PROPOSED ACCESS</li> <li>— EXISTING ACCESS</li> <li>— OFF-ROW/SECONDARY ACCESS</li> <li>— ADD' ACCESS ROUTE</li> <li>— EXISTING TRANSMISSION LINE</li> <li>— ADDITIONAL TEMPORARY WETLAND MATTING</li> <li>— TEMPORARY WETLAND IMPACT</li> <li>— PARCEL BOUNDARY</li> <li>— EVERSOURCE OWNED PARCEL</li> <li>— TEMPORARY UPLAND MATTING</li> </ul> | <ul style="list-style-type: none"> <li>— WORK PAD</li> <li>— ADDITIONAL SCOPE WORK PAD</li> <li>— TOWN BOUNDARY</li> <li>— TOWN MAINTAINED ROAD</li> <li>— STATE MAINTAINED ROADS</li> <li>— PRIVATE ROAD</li> <li>— FIELD DELINEATED WETLAND</li> <li>— POTENTIAL VERNAL POOL</li> </ul> |
|--|---|---|

PER NHFG, AVOID WORK AND ACCESS WITHIN WETLAND BETWEEN SEPTEMBER 16 AND MARCH 31

This mapping product has been created to comply with submittal requirements to obtain certain regulatory approvals and, as such, there is no reliance on the information contained herein for any other purpose.

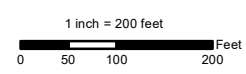


		<b>EVERSOURCE ENERGY</b>	
		<b>C196, Q171, and A253 Transmission Line Structure Replacement Project</b>	
		Goffstown, NH	MAP SHEET
		Date: December, 2022	<b>6 OF 19</b>
NO.	DATE	REVISIONS	



- PROPOSED STRUCTURE REPLACEMENT
- EXISTING STRUCTURE NO PROPOSED WORK
- EXISTING STRUCTURE TO BE REMOVED
- ADDITIONAL PROPOSED STRUCTURE REPLACEMENT
- APPROXIMATE ROW
- EROSION CONTROL
- EXTENT OF WETLAND DELINEATION
- RAILROAD
- NHD FLOWLINES
- PROPOSED ACCESS
- EXISTING ACCESS
- OFF-ROW/SECONDARY ACCESS
- ADD' ACCESS ROUTE
- EXISTING TRANSMISSION LINE
- ADDITIONAL TEMPORARY WETLAND MATTING
- TEMPORARY WETLAND IMPACT
- PARCEL BOUNDARY
- EVERSOURCE OWNED PARCEL
- TEMPORARY UPLAND MATTING
- WORK PAD
- ADDITIONAL SCOPE WORK PAD
- TOWN BOUNDARY
- TOWN MAINTAINED ROAD
- STATE MAINTAINED ROADS
- PRIVATE ROAD
- FIELD DELINEATED WETLAND
- POTENTIAL VERNAL POOL

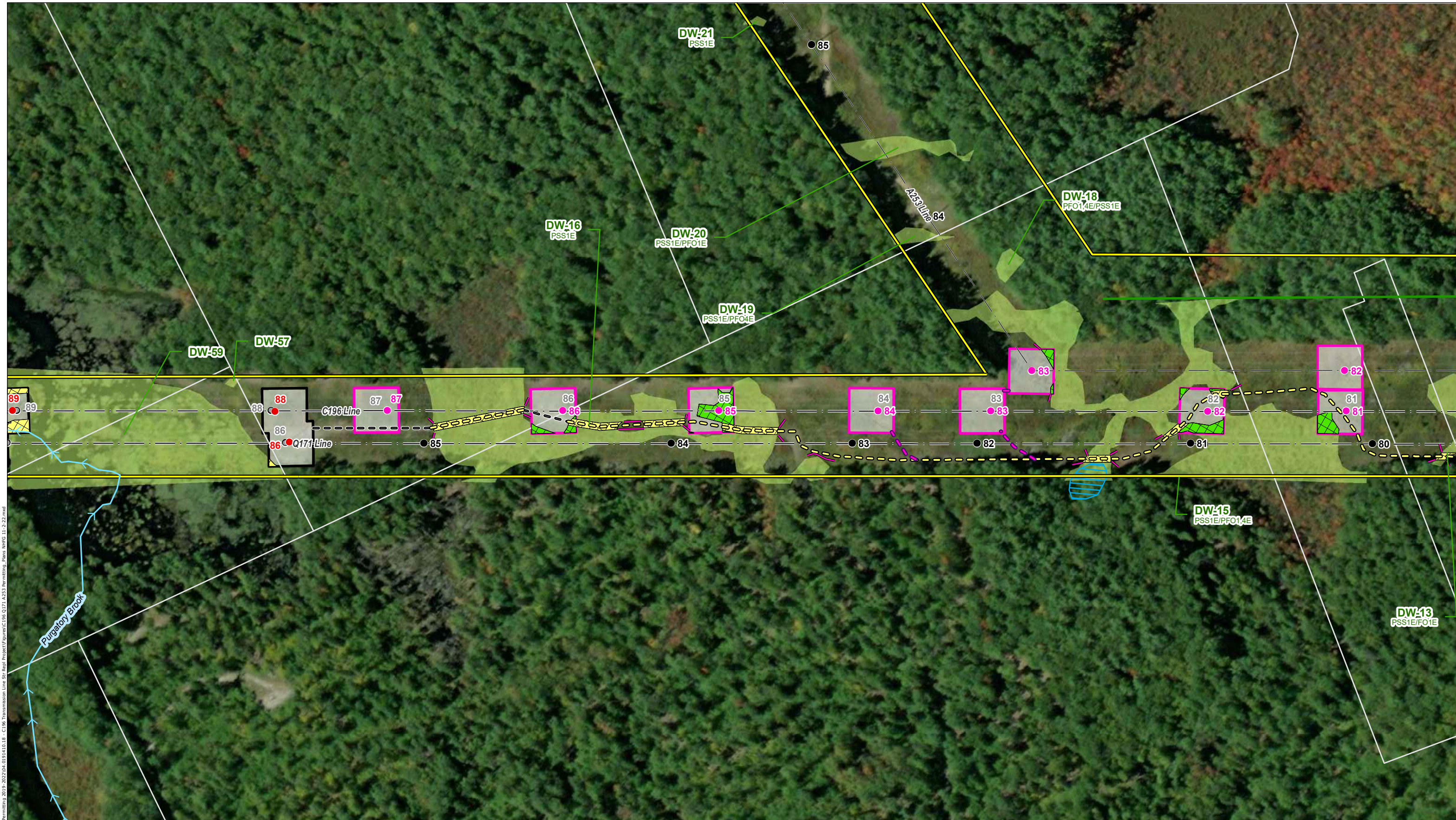
This mapping product has been created to comply with submittal requirements to obtain certain regulatory approvals and, as such, there is no reliance on the information contained herein for any other purpose.



		<b>EVERSOURCE ENERGY</b>	
		<b>C196, Q171, and A253 Transmission Line Structure Replacement Project</b>	
		Goffstown/Dunbarton, NH	MAP SHEET
		Date: December, 2022	7 OF 19
NO.	DATE	REVISIONS	
		04.0191410.42	

Path: P:\Jobs\0191410\04.0191410.00 - EE Siting Permitting 2019-2022\04.0191410.18 - C196 Transmission Line Str Regl Project\Figures\C196 Q171 A253 Permitting Plans NHFG 11-2-22.mxd





Path: P:\Jobs\01914010\04\0191410.00 - EE Siting Permitting 2019-2022\04\0191410.18 - C196 Transmission Line Str Regl Project\Figures\C196 Q171 A253 Permitting Plans NHFG 11-2-22.mxd



● PROPOSED STRUCTURE REPLACEMENT	— PROPOSED ACCESS	▭ WORK PAD
● EXISTING STRUCTURE NO PROPOSED WORK	— EXISTING ACCESS	▭ ADDITIONAL SCOPE WORK PAD
● EXISTING STRUCTURE TO BE REMOVED	— OFF-ROW/SECONDARY ACCESS	▭ TOWN BOUNDARY
● ADDITIONAL PROPOSED STRUCTURE REPLACEMENT	— ADD' ACCESS ROUTE	▭ TOWN MAINTAINED ROAD
— APPROXIMATE ROW	— EXISTING TRANSMISSION LINE	▭ STATE MAINTAINED ROADS
— EROSION CONTROL	▭ ADDITIONAL TEMPORARY WETLAND MATTING	▭ PRIVATE ROAD
— EXTENT OF WETLAND DELINEATION	▭ TEMPORARY WETLAND IMPACT	▭ FIELD DELINEATED WETLAND
— RAILROAD	▭ PARCEL BOUNDARY	▭ POTENTIAL VERNAL POOL
— NHD FLOWLINES	▭ EVERSOURCE OWNED PARCEL	
	▭ TEMPORARY UPLAND MATTING	

This mapping product has been created to comply with submittal requirements to obtain certain regulatory approvals and, as such, there is no reliance on the information contained herein for any other purpose.

1 inch = 200 feet

NO.	DATE	REVISIONS

**EVERSOURCE ENERGY**

**C196 , Q171, and A253 Transmission Line Structure Replacement Project**

Dunbarton, NH		MAP SHEET
Date: December, 2022		<b>8 OF 19</b>
04.0191410.42		



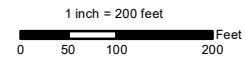
Path: P:\Jobs\01914010\04\0191410.00 - EE Siting Permitting 2019-2022\04\0191410.18 - C196 Transmission Line Str Regl Project\Figures\C196 Q171 A253 Permitting Plans NHFG 11-2-22.mxd

**INDEX MAP**



- |  |   |   |
|--|---|---|
| <ul style="list-style-type: none"> <li>● PROPOSED STRUCTURE REPLACEMENT</li> <li>● EXISTING STRUCTURE NO PROPOSED WORK</li> <li>● EXISTING STRUCTURE TO BE REMOVED</li> <li>● ADDITIONAL PROPOSED STRUCTURE REPLACEMENT</li> <li>— APPROXIMATE ROW</li> <li>— EROSION CONTROL</li> <li>— EXTENT OF WETLAND DELINEATION</li> <li>— RAILROAD</li> <li>— NHD FLOWLINES</li> </ul> | <ul style="list-style-type: none"> <li>— PROPOSED ACCESS</li> <li>— EXISTING ACCESS</li> <li>— OFF-ROW/SECONDARY ACCESS</li> <li>— ADD' ACCESS ROUTE</li> <li>— EXISTING TRANSMISSION LINE</li> <li>— ADDITIONAL TEMPORARY WETLAND MATTING</li> <li>— TEMPORARY WETLAND IMPACT</li> <li>— PARCEL BOUNDARY</li> <li>— EVERSOURCE OWNED PARCEL</li> <li>— TEMPORARY UPLAND MATTING</li> </ul> | <ul style="list-style-type: none"> <li>— WORK PAD</li> <li>— ADDITIONAL SCOPE WORK PAD</li> <li>— TOWN BOUNDARY</li> <li>— TOWN MAINTAINED ROAD</li> <li>— STATE MAINTAINED ROADS</li> <li>— PRIVATE ROAD</li> <li>— FIELD DELINEATED WETLAND</li> <li>— POTENTIAL VERNAL POOL</li> </ul> |
|--|---|---|

*This mapping product has been created to comply with submittal requirements to obtain certain regulatory approvals and, as such, there is no reliance on the information contained herein for any other purpose.*

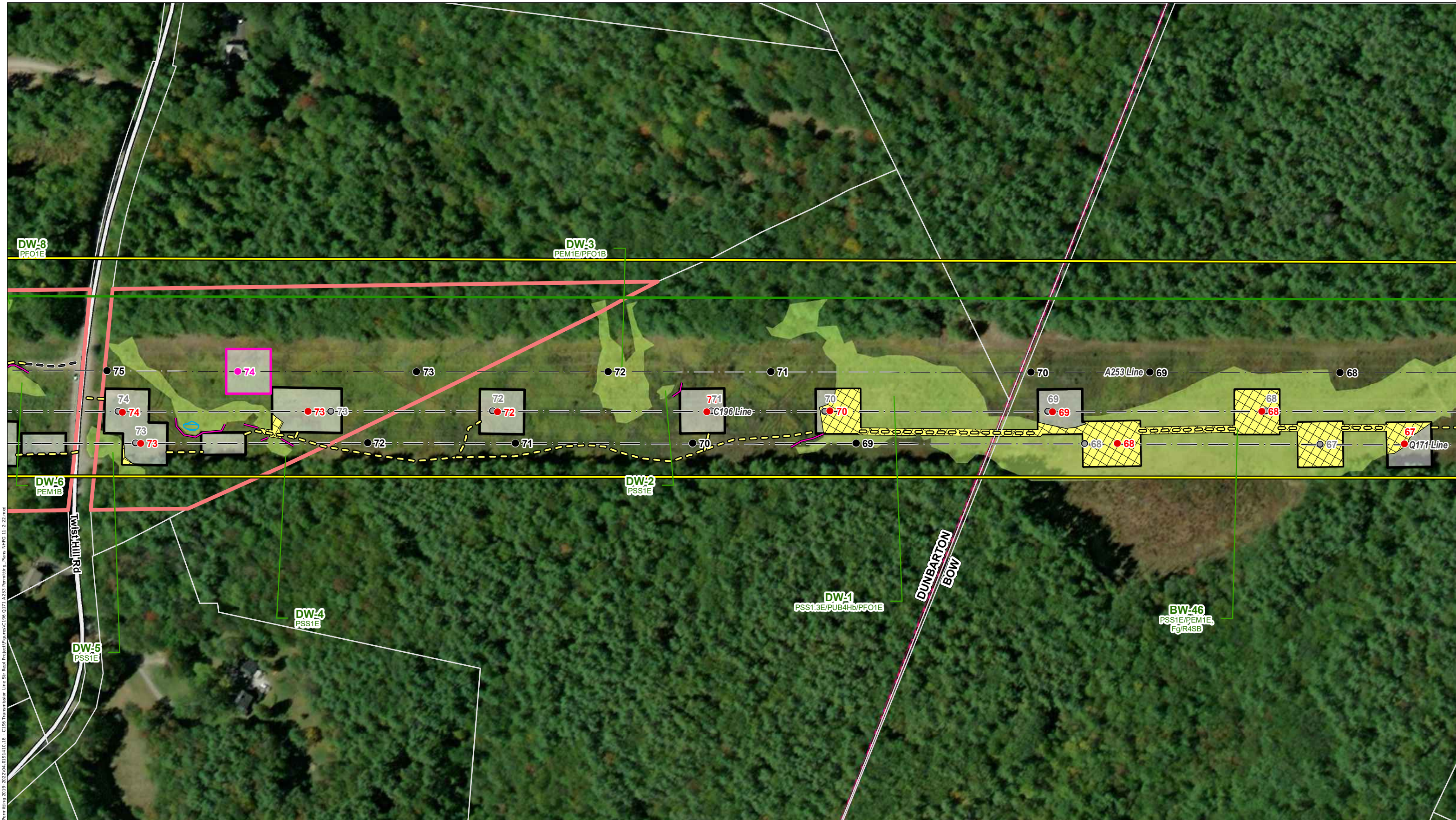


NO.	DATE	REVISIONS

**EVERSOURCE ENERGY**

**C196, Q171, and A253 Transmission Line Structure Replacement Project**

Dunbarton, NH	MAP SHEET
Date: December, 2022	9 OF 19
04.0191410.42	



Path: P:\Jobs\01914010\04\0191410.00 - EE Siting Permitting 2019-2022\04\0191410.18 - C196 Transmission Line Str Repl Project\Figures\C196 Q171 A253 Permitting Plans NHFG 11-2-22.mxd



● PROPOSED STRUCTURE REPLACEMENT	— PROPOSED ACCESS	▭ WORK PAD
● EXISTING STRUCTURE NO PROPOSED WORK	— EXISTING ACCESS	▭ ADDITIONAL SCOPE WORK PAD
● EXISTING STRUCTURE TO BE REMOVED	— OFF-ROW/SECONDARY ACCESS	▭ TOWN BOUNDARY
● ADDITIONAL PROPOSED STRUCTURE REPLACEMENT	— ADD' ACCESS ROUTE	▭ TOWN MAINTAINED ROAD
— APPROXIMATE ROW	— EXISTING TRANSMISSION LINE	▭ STATE MAINTAINED ROADS
— EROSION CONTROL	▭ ADDITIONAL TEMPORARY WETLAND MATTING	▭ PRIVATE ROAD
— EXTENT OF WETLAND DELINEATION	▭ TEMPORARY WETLAND IMPACT	▭ POTENTIAL VERNAL POOL
— RAILROAD	▭ PARCEL BOUNDARY	
— NHD FLOWLINES	▭ EVERSOURCE OWNED PARCEL	
	▭ TEMPORARY UPLAND MATTING	

This mapping product has been created to comply with submittal requirements to obtain certain regulatory approvals and, as such, there is no reliance on the information contained herein for any other purpose.

1 inch = 200 feet  
 0 50 100 200 Feet

NO.	DATE	REVISIONS

**EVERSOURCE ENERGY**  
**C196 , Q171, and A253 Transmission Line Structure Replacement Project**

Dunbarton/Bow, NH	MAP SHEET
Date: December, 2022	10 OF 19
04.0191410.42	

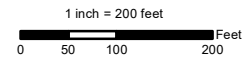


Path: P:\Jobs\01914010\04.0191410.00 - EE Siting Permitting 2019-2022\04.0191410.18 - C196 Transmission Line SRF Regl Project\Figures\C196 Q171 A253 Permitting Plans NHFG 11-2-22.mxd



<ul style="list-style-type: none"> <li>● PROPOSED STRUCTURE REPLACEMENT</li> <li>● EXISTING STRUCTURE NO PROPOSED WORK</li> <li>● EXISTING STRUCTURE TO BE REMOVED</li> <li>● ADDITIONAL PROPOSED STRUCTURE REPLACEMENT</li> <li>— APPROXIMATE ROW</li> <li>— EROSION CONTROL</li> <li>— EXTENT OF WETLAND DELINEATION</li> <li>— RAILROAD</li> <li>— NHD FLOWLINES</li> </ul>	<ul style="list-style-type: none"> <li>— PROPOSED ACCESS</li> <li>— EXISTING ACCESS</li> <li>— OFF-ROW/SECONDARY ACCESS</li> <li>— ADD' ACCESS ROUTE</li> <li>— EXISTING TRANSMISSION LINE</li> <li>— ADDITIONAL TEMPORARY WETLAND MATTING</li> <li>— TEMPORARY WETLAND IMPACT</li> <li>— PARCEL BOUNDARY</li> <li>— EVERSOURCE OWNED PARCEL</li> <li>— TEMPORARY UPLAND MATTING</li> </ul>	<ul style="list-style-type: none"> <li>— WORK PAD</li> <li>— ADDITIONAL SCOPE WORK PAD</li> <li>— TOWN BOUNDARY</li> <li>— TOWN MAINTAINED ROAD</li> <li>— STATE MAINTAINED ROADS</li> <li>— PRIVATE ROAD</li> <li>— FIELD DELINEATED WETLAND</li> <li>— POTENTIAL VERNAL POOL</li> </ul>
--	---	---

This mapping product has been created to comply with submittal requirements to obtain certain regulatory approvals and, as such, there is no reliance on the information contained herein for any other purpose.



		<b>EVERSOURCE ENERGY</b>	
		<b>C196 , Q171, and A253 Transmission Line Structure Replacement Project</b>	
		Bow, NH	MAP SHEET
		Date: December, 2022	11 OF 19
NO.	DATE	REVISIONS	04.0191410.42



Path: P:\Jobs\01914010\04.0191410.00 - E-Sub Permitting 2019 - 2022\04.0191410.18 - C196 Transmission Line SH Regl Project\Figures\C196 Q171 A253 Permitting Plans NHFG 11-2-22.mxd



- |  |   |   |
|--|---|---|
| <ul style="list-style-type: none"> <li>● PROPOSED STRUCTURE REPLACEMENT</li> <li>● EXISTING STRUCTURE NO PROPOSED WORK</li> <li>● EXISTING STRUCTURE TO BE REMOVED</li> <li>● ADDITIONAL PROPOSED STRUCTURE REPLACEMENT</li> <li>— APPROXIMATE ROW</li> <li>— EROSION CONTROL</li> <li>— EXTENT OF WETLAND DELINEATION</li> <li>— RAILROAD</li> <li>— NHD FLOWLINES</li> </ul> | <ul style="list-style-type: none"> <li>— PROPOSED ACCESS</li> <li>— EXISTING ACCESS</li> <li>— OFF-ROW/SECONDARY ACCESS</li> <li>— ADD' ACCESS ROUTE</li> <li>— EXISTING TRANSMISSION LINE</li> <li>— ADDITIONAL TEMPORARY WETLAND MATTING</li> <li>— TEMPORARY WETLAND IMPACT</li> <li>— PARCEL BOUNDARY</li> <li>— EVERSOURCE OWNED PARCEL</li> <li>— TEMPORARY UPLAND MATTING</li> </ul> | <ul style="list-style-type: none"> <li>— WORK PAD</li> <li>— ADDITIONAL SCOPE WORK PAD</li> <li>— TOWN BOUNDARY</li> <li>— TOWN MAINTAINED ROAD</li> <li>— STATE MAINTAINED ROADS</li> <li>— PRIVATE ROAD</li> <li>— FIELD DELINEATED WETLAND</li> <li>— POTENTIAL VERNAL POOL</li> </ul> |
|--|---|---|

This mapping product has been created to comply with submittal requirements to obtain certain regulatory approvals and, as such, there is no reliance on the information contained herein for any other purpose.

N

1 inch = 200 feet

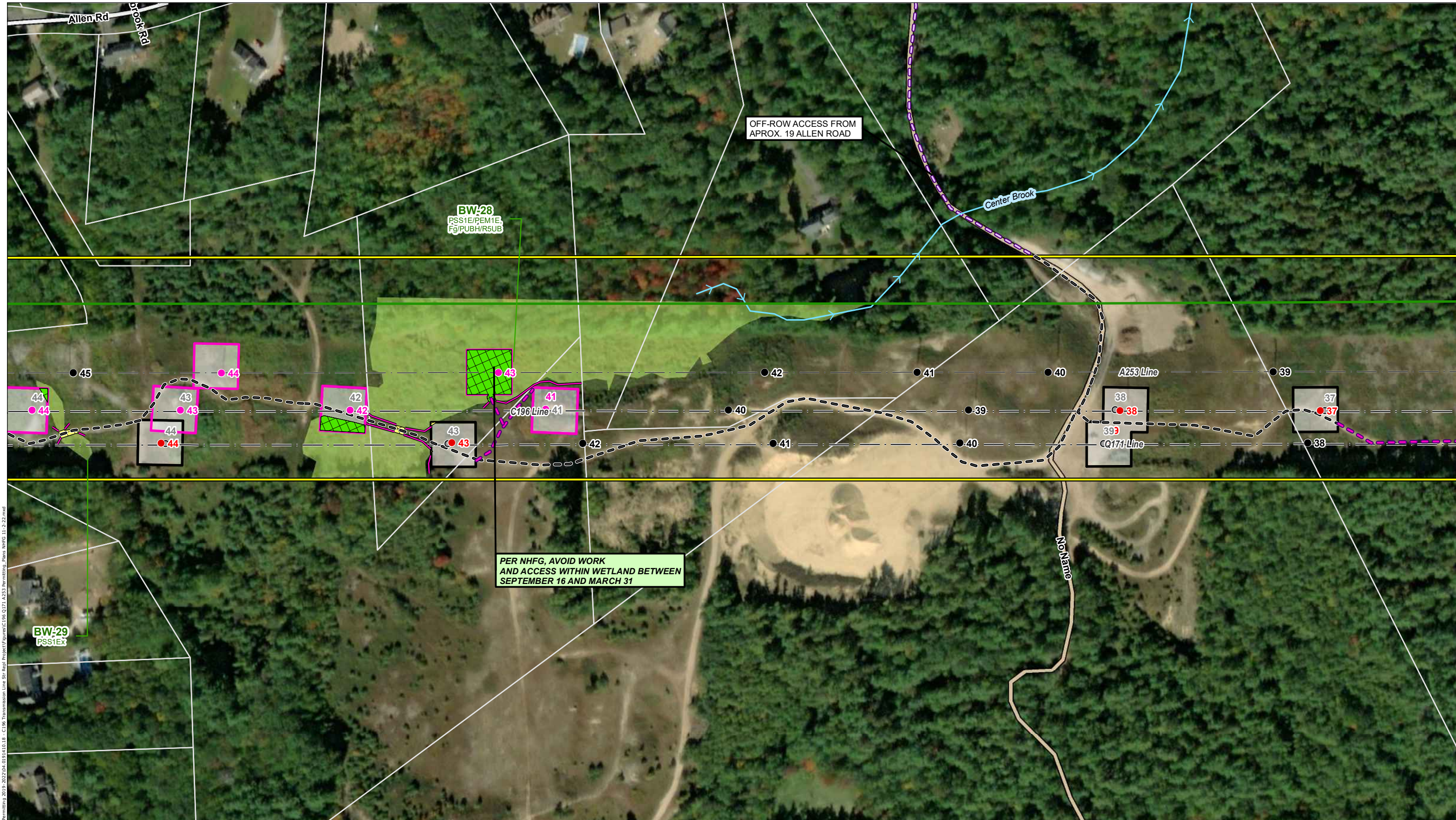
0 50 100 200 Feet

NO.	DATE	REVISIONS

**EVERSOURCE ENERGY**

**C196, Q171, and A253 Transmission Line Structure Replacement Project**

Bow, NH	MAP SHEET
Date: December, 2022	12 OF 19
04.0191410.42	



Path: P:\Jobs\01914010\04.0191410.00 - EE Sling Permitting 2019-2022\04.0191410.18 - C196 Transmission Line Str. Repl. Project\Figures\C196 Q171 A253 Permitting Plans NHFG 11-2-22.mxd



- |  |   |   |
|--|---|---|
| <ul style="list-style-type: none"> <li>● PROPOSED STRUCTURE REPLACEMENT</li> <li>● EXISTING STRUCTURE NO PROPOSED WORK</li> <li>● EXISTING STRUCTURE TO BE REMOVED</li> <li>● ADDITIONAL PROPOSED STRUCTURE REPLACEMENT</li> <li>— APPROXIMATE ROW</li> <li>— EROSION CONTROL</li> <li>— EXTENT OF WETLAND DELINEATION</li> <li>— RAILROAD</li> <li>— NHD FLOWLINES</li> </ul> | <ul style="list-style-type: none"> <li>— PROPOSED ACCESS</li> <li>— EXISTING ACCESS</li> <li>— OFF-ROW/SECONDARY ACCESS</li> <li>— ADD' ACCESS ROUTE</li> <li>— EXISTING TRANSMISSION LINE</li> <li>— ADDITIONAL TEMPORARY WETLAND MATTING</li> <li>— TEMPORARY WETLAND IMPACT</li> <li>— PARCEL BOUNDARY</li> <li>— EVERSOURCE OWNED PARCEL</li> <li>— TEMPORARY UPLAND MATTING</li> </ul> | <ul style="list-style-type: none"> <li>— WORK PAD</li> <li>— ADDITIONAL SCOPE WORK PAD</li> <li>— TOWN BOUNDARY</li> <li>— TOWN MAINTAINED ROAD</li> <li>— STATE MAINTAINED ROADS</li> <li>— PRIVATE ROAD</li> <li>— FIELD DELINEATED WETLAND</li> <li>— POTENTIAL VERNAL POOL</li> </ul> |
|--|---|---|

This mapping product has been created to comply with submittal requirements to obtain certain regulatory approvals and, as such, there is no reliance on the information contained herein for any other purpose.

N

1 inch = 200 feet

0 50 100 200 Feet

NO.	DATE	REVISIONS

**EVSOURCE ENERGY**

**C196, Q171, and A253 Transmission Line Structure Replacement Project**

Bow, NH	MAP SHEET
Date: December, 2022	13 OF 19
04.0191410.42	



Path: P:\Jobs\01914010\04\0191410.00 - EE Siting Permitting\2019-2022\04\0191410.18 - C196 Transmission Line Str Regl Project\Figures\C196 Q171 A253 Permitting Plans NHFG 11-2-22.mxd



- |  |   |   |
|--|---|---|
| <ul style="list-style-type: none"> <li>● PROPOSED STRUCTURE REPLACEMENT</li> <li>● EXISTING STRUCTURE NO PROPOSED WORK</li> <li>● EXISTING STRUCTURE TO BE REMOVED</li> <li>● ADDITIONAL PROPOSED STRUCTURE REPLACEMENT</li> <li>— APPROXIMATE ROW</li> <li>— EROSION CONTROL</li> <li>— EXTENT OF WETLAND DELINEATION</li> <li>— RAILROAD</li> <li>— NHD FLOWLINES</li> </ul> | <ul style="list-style-type: none"> <li>— PROPOSED ACCESS</li> <li>— EXISTING ACCESS</li> <li>— OFF-ROW/SECONDARY ACCESS</li> <li>— ADD' ACCESS ROUTE</li> <li>— EXISTING TRANSMISSION LINE</li> <li>— ADDITIONAL TEMPORARY WETLAND MATTING</li> <li>— TEMPORARY WETLAND IMPACT</li> <li>— PARCEL BOUNDARY</li> <li>— EVERSOURCE OWNED PARCEL</li> <li>— TEMPORARY UPLAND MATTING</li> </ul> | <ul style="list-style-type: none"> <li>— WORK PAD</li> <li>— ADDITIONAL SCOPE WORK PAD</li> <li>— TOWN BOUNDARY</li> <li>— TOWN MAINTAINED ROAD</li> <li>— STATE MAINTAINED ROADS</li> <li>— PRIVATE ROAD</li> <li>— FIELD DELINEATED WETLAND</li> <li>— POTENTIAL VERNAL POOL</li> </ul> |
|--|---|---|

This mapping product has been created to comply with submittal requirements to obtain certain regulatory approvals and, as such, there is no reliance on the information contained herein for any other purpose.

1 inch = 200 feet  
 0 50 100 200 Feet

<b>EVERSOURCE ENERGY</b>		
<b>C196, Q171, and A253 Transmission Line Structure Replacement Project</b>		
Bow, NH		MAP SHEET
Date: December, 2022		14 OF 19
NO.	DATE	REVISIONS
		04.0191410.42



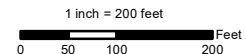
Path: P:\Jobs\01914010\04.0191410.00 - E-Sub Permitting\2019-2022\04.0191410.18 - C196 Transmission Line\SR Regl Project\Figures\C196 Q171 A253 Permitting Plans NHFG 11-2-22.mxd

**INDEX MAP**



- |   |  |                             |
|---|--|-----------------------------|
| ● PROPOSED STRUCTURE REPLACEMENT            | — PROPOSED ACCESS                      | ▭ WORK PAD                  |
| ● EXISTING STRUCTURE NO PROPOSED WORK       | — EXISTING ACCESS                      | ▭ ADDITIONAL SCOPE WORK PAD |
| ● EXISTING STRUCTURE TO BE REMOVED          | — OFF-ROW/SECONDARY ACCESS             | ▭ TOWN BOUNDARY             |
| ● ADDITIONAL PROPOSED STRUCTURE REPLACEMENT | — ADD' ACCESS ROUTE                    | ▭ TOWN MAINTAINED ROAD      |
| — APPROXIMATE ROW                           | — EXISTING TRANSMISSION LINE           | ▭ STATE MAINTAINED ROADS    |
| — EROSION CONTROL                           | ▭ ADDITIONAL TEMPORARY WETLAND MATTING | ▭ PRIVATE ROAD              |
| — EXTENT OF WETLAND DELINEATION             | ▭ TEMPORARY WETLAND IMPACT             | ▭ FIELD DELINEATED WETLAND  |
| — RAILROAD                                  | ▭ PARCEL BOUNDARY                      | ▭ POTENTIAL VERNAL POOL     |
| — NHD FLOWLINES                             | ▭ EVERSOURCE OWNED PARCEL              |                             |
|   | ▭ TEMPORARY UPLAND MATTING             |                             |

This mapping product has been created to comply with submittal requirements to obtain certain regulatory approvals and, as such, there is no reliance on the information contained herein for any other purpose.



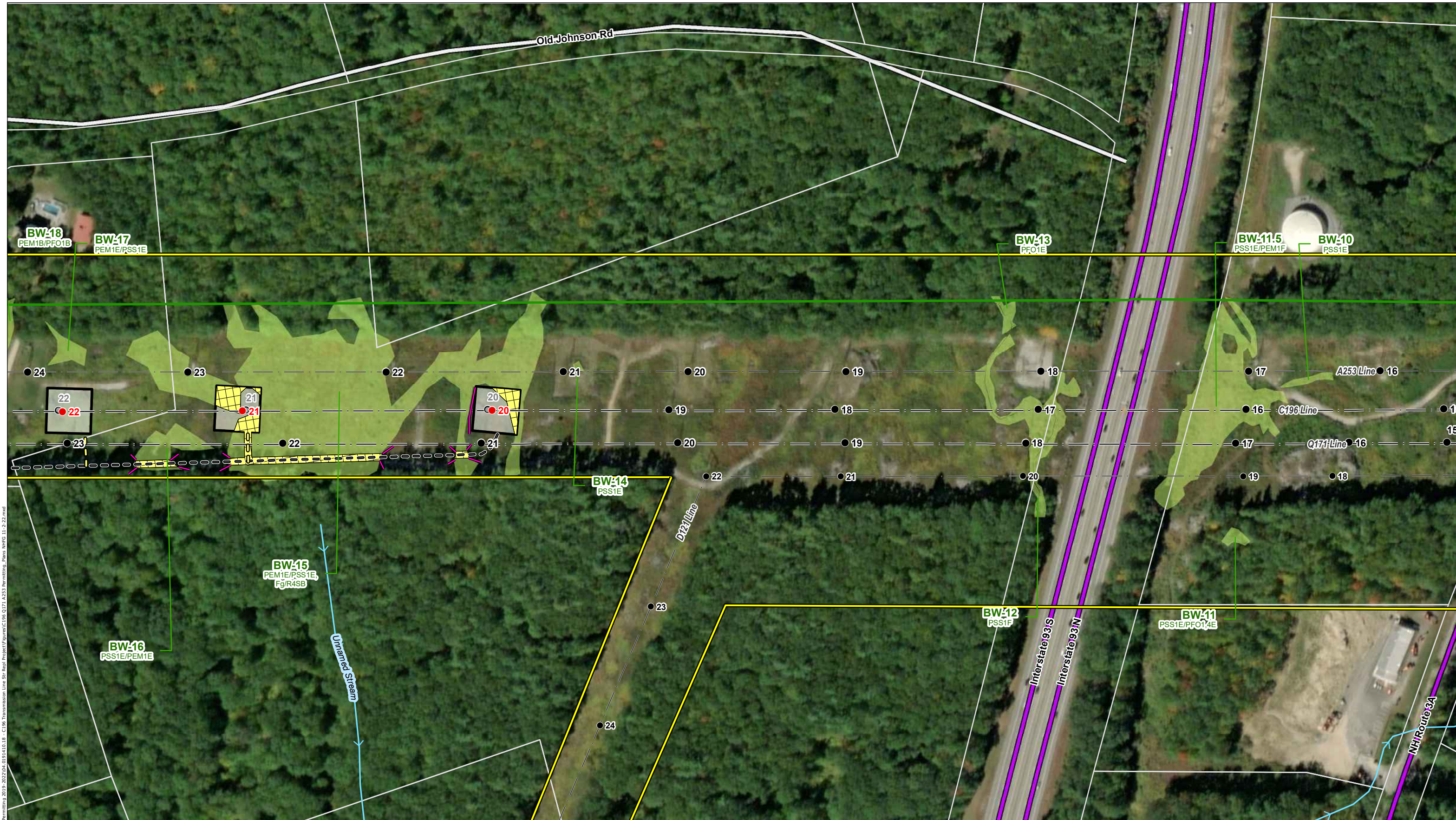
NO.	DATE	REVISIONS

**EVERSOURCE ENERGY**

**C196, Q171, and A253 Transmission Line Structure Replacement Project**

Bow, NH	MAP SHEET
Date: December, 2022	
04.0191410.42	
<b>15 OF 19</b>	



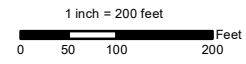


Path: P:\Jobs\0191410\0191410\_00 - E-Sub Permitting\2019-2022\04\0191410.18 - C196 Transmission Line Str Repl Project\Figures\C196 Q171 A253 Permitting Plans NHFG 11-2-22.mxd



- |  |   |   |
|--|---|---|
| <ul style="list-style-type: none"> <li>● PROPOSED STRUCTURE REPLACEMENT</li> <li>● EXISTING STRUCTURE NO PROPOSED WORK</li> <li>● EXISTING STRUCTURE TO BE REMOVED</li> <li>● ADDITIONAL PROPOSED STRUCTURE REPLACEMENT</li> <li>— APPROXIMATE ROW</li> <li>— EROSION CONTROL</li> <li>— EXTENT OF WETLAND DELINEATION</li> <li>— RAILROAD</li> <li>— NHD FLOWLINES</li> </ul> | <ul style="list-style-type: none"> <li>— PROPOSED ACCESS</li> <li>— EXISTING ACCESS</li> <li>— OFF-ROW/SECONDARY ACCESS</li> <li>— ADD' ACCESS ROUTE</li> <li>— EXISTING TRANSMISSION LINE</li> <li>— ADDITIONAL TEMPORARY WETLAND MATTING</li> <li>— TEMPORARY WETLAND IMPACT</li> <li>— PARCEL BOUNDARY</li> <li>— EVERSOURCE OWNED PARCEL</li> <li>— TEMPORARY UPLAND MATTING</li> </ul> | <ul style="list-style-type: none"> <li>— WORK PAD</li> <li>— ADDITIONAL SCOPE WORK PAD</li> <li>— TOWN BOUNDARY</li> <li>— TOWN MAINTAINED ROAD</li> <li>— STATE MAINTAINED ROADS</li> <li>— PRIVATE ROAD</li> <li>— FIELD DELINEATED WETLAND</li> <li>— POTENTIAL VERNAL POOL</li> </ul> |
|--|---|---|

This mapping product has been created to comply with submittal requirements to obtain certain regulatory approvals and, as such, there is no reliance on the information contained herein for any other purpose.



		<b>EVERSOURCE ENERGY</b>	
		<b>C196, Q171, and A253 Transmission Line Structure Replacement Project</b>	
		Bow, NH	MAP SHEET
		Date: December, 2022	
		04.0191410.42	<b>16 OF 19</b>
NO.	DATE	REVISIONS	



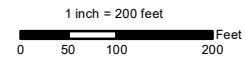
PER NHFG, AVOID WORK AND ACCESS WITHIN WETLAND BETWEEN SEPTEMBER 16 AND MARCH 31

Path: P:\Jobs\01914010\04.0191410.00 - EE Siting Permitting 2019 - 2022\04.0191410.18 - C196 Transmission Line Siting Project\Figures\C196 Q171 A253 Permitting Plans NHFG 11-2-22.mxd



- |  |   |   |
|--|---|---|
| <ul style="list-style-type: none"> <li>● PROPOSED STRUCTURE REPLACEMENT</li> <li>● EXISTING STRUCTURE NO PROPOSED WORK</li> <li>● EXISTING STRUCTURE TO BE REMOVED</li> <li>● ADDITIONAL PROPOSED STRUCTURE REPLACEMENT</li> <li>— APPROXIMATE ROW</li> <li>— EROSION CONTROL</li> <li>— EXTENT OF WETLAND DELINEATION</li> <li>— RAILROAD</li> <li>— NHD FLOWLINES</li> </ul> | <ul style="list-style-type: none"> <li>— PROPOSED ACCESS</li> <li>— EXISTING ACCESS</li> <li>— OFF-ROW/SECONDARY ACCESS</li> <li>— ADD' ACCESS ROUTE</li> <li>— EXISTING TRANSMISSION LINE</li> <li>— ADDITIONAL TEMPORARY WETLAND MATTING</li> <li>— TEMPORARY WETLAND IMPACT</li> <li>— PARCEL BOUNDARY</li> <li>— EVERSOURCE OWNED PARCEL</li> <li>— TEMPORARY UPLAND MATTING</li> </ul> | <ul style="list-style-type: none"> <li>— WORK PAD</li> <li>— ADDITIONAL SCOPE WORK PAD</li> <li>— TOWN BOUNDARY</li> <li>— TOWN MAINTAINED ROAD</li> <li>— STATE MAINTAINED ROADS</li> <li>— PRIVATE ROAD</li> <li>— FIELD DELINEATED WETLAND</li> <li>— POTENTIAL VERNAL POOL</li> </ul> |
|--|---|---|

This mapping product has been created to comply with submittal requirements to obtain certain regulatory approvals and, as such, there is no reliance on the information contained herein for any other purpose.



<b>EVERSOURCE ENERGY</b>		
<b>C196, Q171, and A253 Transmission Line Structure Replacement Project</b>		
Bow, NH		MAP SHEET
Date: December, 2022		17 OF 19
NO.	DATE	REVISIONS



Path: P:\Jobs\01914010\04.0191410.00 - EE Siting Permitting 2019-2022\04.0191410.18 - C196 Transmission Line Siting Regl Project\Figures\C196 Q171 A253 Permitting Plans MHFG 11-2-22.mxd



● PROPOSED STRUCTURE REPLACEMENT	— PROPOSED ACCESS	■ WORK PAD
● EXISTING STRUCTURE NO PROPOSED WORK	— EXISTING ACCESS	■ ADDITIONAL SCOPE WORK PAD
● EXISTING STRUCTURE TO BE REMOVED	— OFF-ROW/SECONDARY ACCESS	■ TOWN BOUNDARY
● ADDITIONAL PROPOSED STRUCTURE REPLACEMENT	— ADD' ACCESS ROUTE	— TOWN MAINTAINED ROAD
— APPROXIMATE ROW	— EXISTING TRANSMISSION LINE	— STATE MAINTAINED ROADS
— EROSION CONTROL	■ ADDITIONAL TEMPORARY WETLAND MATTING	— PRIVATE ROAD
— EXTENT OF WETLAND DELINEATION	■ TEMPORARY WETLAND IMPACT	■ FIELD DELINEATED WETLAND
— RAILROAD	— PARCEL BOUNDARY	■ POTENTIAL VERNAL POOL
— NHD FLOWLINES	■ EVERSOURCE OWNED PARCEL	
	■ TEMPORARY UPLAND MATTING	

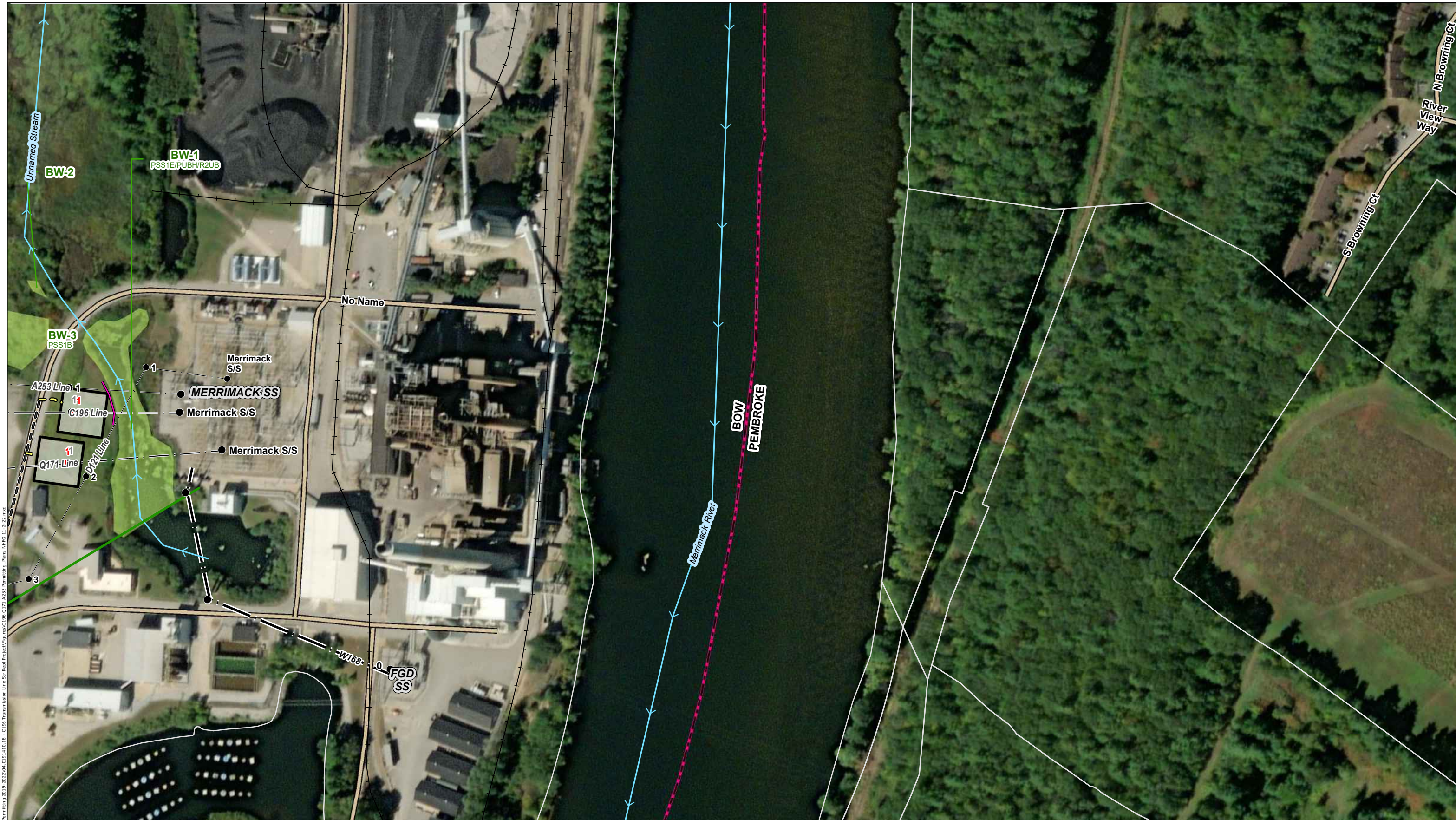
This mapping product has been created to comply with submittal requirements to obtain certain regulatory approvals and, as such, there is no reliance on the information contained herein for any other purpose.

1 inch = 200 feet  
 0 50 100 200 Feet

NO.	DATE	REVISIONS

**EVERSOURCE ENERGY**  
**C196, Q171, and A253 Transmission Line Structure Replacement Project**  
 Bow, NH  
 Date: December, 2022  
 04.0191410.42

**MAP SHEET**  
**18 OF 19**



Path: P:\Jobs\01914010\04\0191410.00 - E-Sub Permitting 2019-2022\04\0191410.18 - C196 Transmission Line Str. Repl. Project\Figures\C196 Q171 A253 Permitting Plans NHFG 11-2-22.mxd



- |  |   |   |
|--|---|---|
| <ul style="list-style-type: none"> <li>● PROPOSED STRUCTURE REPLACEMENT</li> <li>● EXISTING STRUCTURE NO PROPOSED WORK</li> <li>● EXISTING STRUCTURE TO BE REMOVED</li> <li>● ADDITIONAL PROPOSED STRUCTURE REPLACEMENT</li> <li>— APPROXIMATE ROW</li> <li>— EROSION CONTROL</li> <li>— EXTENT OF WETLAND DELINEATION</li> <li>— RAILROAD</li> <li>— NHD FLOWLINES</li> </ul> | <ul style="list-style-type: none"> <li>— PROPOSED ACCESS</li> <li>— EXISTING ACCESS</li> <li>— OFF-ROW/SECONDARY ACCESS</li> <li>— ADD' ACCESS ROUTE</li> <li>— EXISTING TRANSMISSION LINE</li> <li>— ADDITIONAL TEMPORARY WETLAND MATTING</li> <li>— TEMPORARY WETLAND IMPACT</li> <li>— PARCEL BOUNDARY</li> <li>— EVERSOURCE OWNED PARCEL</li> <li>— TEMPORARY UPLAND MATTING</li> </ul> | <ul style="list-style-type: none"> <li>— WORK PAD</li> <li>— ADDITIONAL SCOPE WORK PAD</li> <li>— TOWN BOUNDARY</li> <li>— TOWN MAINTAINED ROAD</li> <li>— STATE MAINTAINED ROADS</li> <li>— PRIVATE ROAD</li> <li>— FIELD DELINEATED WETLAND</li> <li>— POTENTIAL VERNAL POOL</li> </ul> |
|--|---|---|

This mapping product has been created to comply with submittal requirements to obtain certain regulatory approvals and, as such, there is no reliance on the information contained herein for any other purpose.

1 inch = 200 feet



		<b>EVERSOURCE ENERGY</b>	
		<b>C196 , Q171, and A253 Transmission Line Structure Replacement Project</b>	
		Bow/Pembroke, NH	MAP SHEET
		Date: December, 2022	19 OF 19
NO.	DATE	REVISIONS	

© 2022 - GZA GeoEnvironmental, Inc. P:\04 Jobs\0191400s\04\_0191410.00 - EE Siting Permitting 2019-2022\04\_0191410.18 - C196 Transmission Line Str. Repl. Project\Figures\C196 Q171 Notesheet 1 10-7.mxd, 8/22/2022, 11:22:12 AM, Sydney Wicklund

**CONSTRUCTION SEQUENCE:**

1. WETLAND BOUNDARIES TO BE CLEARLY MARKED PRIOR TO THE START OF CONSTRUCTION.
2. SEDIMENT AND EROSION CONTROL MEASURES SHALL BE INSTALLED IN ACCORDANCE WITH THE DETAIL PROVIDED, AS NECESSARY, AND CONSISTENT WITH THE NHDES MARCH 2019 BMP MANUAL FOR UTILITY MAINTENANCE.
3. WETLAND IMPACTS ASSOCIATED WITH WETLAND CROSSINGS ARE REQUIRED FOR ACCESS BETWEEN STRUCTURES WITHIN THE RIGHT OF WAY.
4. ADEQUATE PRECAUTION SHALL BE EXERCISED TO AVOID SPILLAGE OF FUEL OILS, CHEMICALS, OR SIMILAR SUBSTANCES; NO FUELS, LUBRICANTS, CHEMICALS OR SIMILAR SUBSTANCES SHALL BE STORED BENEATH TREES OR IN THE VICINITY OF ANY WETLANDS, RIVER, STREAM OR OTHER BODY OF WATER; OR IN THE VICINITY OF NATURAL OR MAN-MADE CHANNELS LEADING THERETO. NO POWER EQUIPMENT SHALL BE STORED, MAINTAINED, OR FUELED IN ANY AREA ADJACENT TO A WETLAND, RIVER, STREAM OR OTHER BODY OF WATER.
5. REMOVE COMPLETELY ALL CONTAMINATION FROM ANY SPILLAGE OF CHEMICALS OR PETROLEUM PRODUCT WITH COMPLETE REHABILITATION OF THE AFFECTED AREA.
6. ACCESS ROUTES HAVE BEEN SELECTED TO PREVENT DEGRADATION OF THE RIGHT-OF-WAY AND MINIMIZE ENVIRONMENTAL IMPACT. OPERATIONS SHALL BE CONFINED TO THE SPECIFIED ACCESS ROUTES WITHIN THE PROPOSED WETLAND IMPACT AREA. ACCESS ROUTES SHALL NOT EXCEED A 16 FOOT-WIDTH.
7. IMPACT TO VEGETATION WITHIN WETLANDS WILL BE LIMITED TO THE EXTENT NECESSARY TO PLACE THE SWAMP MATS WHERE REQUIRED.
8. LOW GROWING VARIETIES OF VEGETATION ADJACENT TO WETLANDS SHALL BE PRESERVED TO THE EXTENT POSSIBLE. STUMPS AND ROCKS SHALL NOT BE REMOVED, AND THERE SHALL BE NO EXCAVATIONS, FILLS OR GRADING DONE ADJACENT TO WETLANDS, UNLESS MINOR EXCAVATIONS IS NEEDED FOR ACCESS.
9. TIMBER MATS AND PERIMETER CONTROLS WILL BE USED ALONG ACCESS ROUTES AND WORK PADS WITHIN WETLAND AREAS. THESE MATS ARE CONSTRUCTED OF HEAVY TIMBERS OR COMPOSITE MATERIAL, BOLTED TOGETHER, AND ARE PLACED END-TO-END IN THE WETLAND TO SUPPORT HEAVY EQUIPMENT. ALL SWAMP MATS SHALL BE PLACED AND REMOVED SO AS NOT TO CAUSE ANY RUTS, CHANNELS OR DEPRESSIONS, OR OTHERWISE CAUSE ANY UNDUE DISTURBANCE TO WETLANDS.
10. IF TIMBER MAT BMP IS NOT SUFFICIENT DUE TO HIGH WATER, ADDITIONAL BMP'S MAY INCLUDE THE PLACEMENT OF GEOTEXTILE FABRIC, 3"-4" STONE, AND GRAVEL TO PROVIDE A SUITABLE ROAD BED. A TEMPORARY CULVERT MAY BE REQUIRED IN AREAS OF HIGH FLOW TO MAINTAIN HYDROLOGIC CONNECTIVITY. ALL MATERIAL WILL BE REMOVED FROM JURISDICTIONAL AREAS AFTER CONSTRUCTION COMPLETION.
11. NO MATERIAL SHALL BE PLACED IN ANY LOCATION OR IN ANY MANNER SO AS TO IMPAIR SURFACE WATER FLOW INTO, THROUGH OR OUT OF ANY WETLAND AREA. NO INSTALLATION SHALL CREATE AN IMPOUNDMENT THAT WILL IMPEDE THE FLOW OF WATER OR CAUSE FLOODING.
12. NO MATERIAL SHALL BE TAKEN FROM THE WETLANDS AREA EXCEPT THAT WHICH MUST NECESSARILY BE REMOVED FOR THE STRUCTURE OR FOUNDATION PLACEMENT OR STABILIZATION. ALL EXCESS MATERIAL TAKEN FROM THE WETLAND WILL BE REMOVED FROM THE SITE.
13. ANY PROPOSED SUPPORT FILLS SHALL BE CLEAN GRAVEL AND STONE, FREE OF WASTE METAL PRODUCTS, ORGANIC MATERIALS AND SIMILAR DEBRIS AND SHALL NOT EXCEED THE AMOUNT PERMITTED. THIS ALLOWABLE FILL IS THE ONLY FILL THAT MAY REMAIN IN THE WETLAND AFTER CONSTRUCTION. ALL CUT AND FILLS SLOPES SHALL BE SEEDED/LOAMED WITHIN 72 HOURS OF ACHIEVING FINISHED GRADE.
14. INSTALL NEW POLES IN THE LOCATIONS DESIGNATED ON THE PERMITTING PLANS.
15. CABLE INSTALLATION WILL BE PERFORMED IN A MANNER SO AS TO AVOID, OR LIMIT TO THE MAXIMUM EXTENT POSSIBLE, TRAVERSING WETLANDS WITH HEAVY EQUIPMENT. IN SOME CASES, A HELICOPTER MAY BE USED DURING THE INSTALLATION TO MINIMIZE IMPACTS.
16. REMOVAL OF THE OLD POLE WILL OCCUR ONCE THE CABLE HAS BEEN INSTALLED ON THE NEW STRUCTURE. THE OLD STRUCTURES WILL BE REMOVED FROM THE SITE. POLES WILL BE CUT AT THE GROUND SURFACE. FOOTINGS WILL BE ABANDONED IN PLACE TO MINIMIZE IMPACTS.
17. ALL TIMBER MATS, MATERIAL, AND DEBRIS WILL BE REMOVED FROM THE WORK AREA UPON THE COMPLETION OF CONSTRUCTION.
18. UPLAND DISTURBED AREAS SHALL BE RESTORED AND STABILIZED UPON COMPLETION OF CONSTRUCTION. WORK PAD RESTORATION SHOULD INCLUDE REDUCING THE WORK PAD TO A 30 BY 60 FOOT AREA, AND REDUCING SLOPES TO A MAXIMUM OF 25%. STOCKPILED MATERIAL SHOULD BE SPREAD TO REDUCE ANY UNNECESSARY SLOPES. GRAVEL WORK PADS AND SLOPES SHOULD BE SCARIFIED TO A MINIMUM OF 3" BEFORE SPREADING TOPSOIL/LOAM.
19. ALL TEMPORARY WETLAND IMPACTS WILL BE RE-GRADED TO ORIGINAL CONTOURS FOLLOWING CONSTRUCTION. NEW ENGLAND EROSION CONTROL/RESTORATION MIX, AVAILABLE THROUGH NEW ENGLAND WETLAND PLANTS, INC., 820 WEST STREET, AMHERST, MA 01002, 413-548-8000, OR EQUIVALENT SEED MIX SHALL BE APPLIED IN WETLAND AREAS THAT ARE NOT INUNDATED, AS NECESSARY.
20. MULCH USED FOR STABILIZATION SHALL CONSIST OF SEEDLESS STRAW.
21. SEDIMENT AND EROSION CONTROL MEASURES WILL BE EVALUATED AND REMOVED IF NECESSARY UPON THE COMPLETION OF CONSTRUCTION.
22. COMMERCIAL LOAM WILL NOT BE USED AS PART OF RESTORATION. ONLY IN-SITU TOPSOIL WILL BE USED TO RESTORE DISTURBED AREAS.
23. WHERE OPTIMAL TURTLE BREEDING AREAS OVERLAP WITH DISTURBANCE (AS DETERMINED BY AN ENVIRONMENTAL MONITOR), MINERAL SOILS WILL BE SCARIFIED TO ALLEVIATE COMPACTION AND BECOME MORE SUITED FOR TURTLE BREEDING.
24. NATURALLY VEGETATED LOCAL WETLAND BUFFER AREAS OUTSIDE OF EXISTING TRAILS MUST BE RESTORED UPON COMPLETION OF WORK.

**WINTER CONSTRUCTION NOTES**

1. PROPOSED VEGETATED AREAS WHICH DO NOT EXHIBIT A MINIMUM OF 85% VEGETATIVE GROWTH BY OCTOBER 15TH, OR WHICH ARE DISTURBED AFTER OCTOBER 15TH, SHALL BE STABILIZED. STABILIZATION METHODS SHALL INCLUDE SEEDING AND MULCH, AND INSTALLATION OF EROSION CONTROL BLANKETS ON SLOPES GREATER THAN 3:1, AND SEEDING AND PLACING 3 TO 4 TONS OF MULCH PER ACRE, SECURED WITH ANCHORED NETTING, ELSEWHERE. THE INSTALLATION OF EROSION CONTROL BLANKETS OR MULCH AND NETTING SHALL NOT OCCUR OVER ACCUMULATED SNOW OR FROZEN GROUND AND SHALL BE COMPLETED IN ADVANCE OF THAW OR SPRING MELT EVENTS.
2. DITCHES OR SWALES WHICH DO NOT EXHIBIT A MINIMUM OF 85% VEGETATIVE GROWTH BY OCTOBER 15TH, OR WHICH ARE DISTURBED AFTER OCTOBER 15TH, SHALL BE TEMPORARILY STABILIZED WITH STONE OR EROSION CONTROL BLANKETS APPROPRIATE FOR THE DESIGN FLOW CONDITIONS.

3. AFTER NOVEMBER 15TH, INCOMPLETE ROAD OR PARKING SURFACES, WHERE WORK HAS STOPPED FOR THE WINTER SEASON, SHALL BE PROTECTED WITH A MINIMUM OF 3 INCHES OF CRUSHED GRAVEL (NHDOT 304.3).

**GENERAL NOTES:**

OWNER: EVERSOURCE ENERGY  
13 LEGENDS DRIVE  
HOOKSETT, NH 03106

1. BASE PLAN PROVIDED BY EVERSOURCE ENERGY. EVERSOURCE ENERGY PROVIDED THE WETLAND DATA. EVERSOURCE ENERGY PROVIDED THE UTILITY DESIGN.
2. JURISDICTIONAL WETLANDS WERE CONFIRMED BY GZA GEOENVIRONMENTAL, INC. IN 2022, IN ACCORDANCE WITH THE 1987 U.S. ARMY CORPS OF ENGINEERS' "WETLANDS DELINEATION MANUAL, TECHNICAL REPORT Y-87-1," AND REGIONAL SUPPLEMENT TO THE CORPS OF ENGINEERS WETLAND DELINEATION MANUAL: NORTH CENTRAL AND NORTHEAST REGION," JANUARY 2012. WETLANDS WILL BE REVIEWED BY GZA GEOENVIRONMENTAL, INC. PRIOR TO START OF WORK.
3. GZA EVALUATED WETLANDS AS POTENTIAL VERNAL POOLS IN 2022 IN ACCORDANCE WITH "IDENTIFICATION AND DOCUMENTATION OF VERNAL POOLS IN NEW HAMPSHIRE," 2016, NEW HAMPSHIRE FISH AND GAME DEPARTMENT, NONGAME AND ANDANGERED WILDLIFE PROGRAM.
4. AS APPLICABLE, GZA WILL COMPLETE WETLANDS FUNCTION AND VALUES ASSESSMENT IN ACCORDANCE WITH THE ACOE'S "HIGHWAY METHODOLOGY WORKBOOK SUPPLEMENT," SEPTEMBER 1999.
5. SITE PLAN IS FOR PERMITTING PURPOSES ONLY AND DOES NOT REPRESENT A PROPERTY BOUNDARY SURVEY.
6. THE PROJECT WILL BE MANAGED IN A MANNER THAT MEETS THE REQUIREMENTS AND INTENT OF RSA 430:53 AND CHAPTER AGR 3800 RELATIVE TO INVASIVE SPECIES.
7. IN ACCORDANCE WITH ENV-WQ 1505.02, THE SMALLEST PRACTICAL AREA SHALL BE DISTURBED DURING CONSTRUCTION, BUT IN NO CASE SHALL EXCEED 5 ACRES AT ANY ONE TIME BEFORE DISTURBED AREAS ARE STABILIZED. AN AREA SHALL BE CONSIDERED STABLE IF ONE OF THE FOLLOWING HAS OCCURRED:
  - A MINIMUM 85 PERCENT VEGETATED GROWTH HAS BEEN ESTABLISHED
  - A MINIMUM OF 3 INCHES OF NON-EROSIVE MATERIAL HAS BEEN INSTALLED
  - OR, EROSION CONTROL BLANKETS HAVE BEEN PROPERLY INSTALLED.

**EROSION CONTROL NOTES:**

1. INSTALLATION OF EROSION CONTROL GRINDINGS AND/OR SILT FENCES SHALL BE COMPLETE PRIOR TO THE START OF WORK IN ANY GIVEN AREA. EROSION CONTROLS SHALL BE USED DURING CONSTRUCTION AND REMOVED WHEN ALL SLOPES HAVE A HEALTHY STAND OF VEGETATION COVER. EROSION CONTROL MEASURES SHALL BE INSPECTED ON A WEEKLY BASIS AND AFTER .25" OR GREATER RAINFALL EVENTS.
2. AS REQUIRED, CONSTRUCT TEMPORARY BERMS, SILTATION FENCES, SEDIMENT TRAPS, ETC. TO PREVENT EROSION & SEDIMENTATION OF WETLANDS.
3. THE WORK AREA SHALL BE GRADED AND OTHERWISE SHAPED IN SUCH A MANNER AS TO MINIMIZE SOIL EROSION, SILTATION OF DRAINAGE CHANNELS, DAMAGE TO EXISTING VEGETATION, AND DAMAGE TO PROPERTY OUTSIDE LIMITS OF THE WORK AREA. EROSION CONTROL GRINDINGS WILL BE NECESSARY TO ACCOMPLISH THIS END.
4. ANY STRIPPED TOPSOIL SHALL BE STOCKPILED, WITHOUT COMPACTION, AND STABILIZED WITH BMPS.
5. PERMANENT OR TEMPORARY COVER MUST BE IN PLACE BEFORE THE GROWING SEASON ENDS. WHEN SEEDED AREAS ARE NOT MULCHED, PLANTINGS SHOULD BE MADE FROM EARLY SPRING TO MAY 20 OR FROM AUGUST 15 TO SEPTEMBER 15. NO DISTURBED AREA SHALL BE LEFT EXPOSED DURING WINTER MONTHS, PLANT ANNUAL RYEGRASS PRIOR TO OCTOBER 15TH.
6. EROSION CONTROLS SHALL BE INSPECTED WEEKLY AND AFTER EVERY HALF-INCH OF RAINFALL.
7. EROSION CONTROL MATTING, IF REQUIRED, WILL CONSIST OF JUTE MATTING. MATTING WITH WELDED PLASTIC OR 'BIODEGRADABLE PLASTIC' NETTING OR THREAD WILL BE AVOIDED TO LIMIT UNINTENTIONAL MORTALITY TO SNAKES.

UNLESS SPECIFICALLY STATED BY WRITTEN AGREEMENT, THIS DRAWING IS THE SOLE PROPERTY OF GZA GEOENVIRONMENTAL, INC. (GZA). THE INFORMATION SHOWN ON THE DRAWING IS SOLELY FOR THE USE BY GZA'S CLIENT OR THE CLIENT'S DESIGNATED REPRESENTATIVE FOR THE SPECIFIC PROJECT AND LOCATION IDENTIFIED ON THE DRAWING. THE DRAWING SHALL NOT BE TRANSFERRED, REUSED, COPIED, OR ALTERED IN ANY MANNER FOR USE AT ANY OTHER LOCATION OR FOR ANY OTHER PURPOSE WITHOUT THE PRIOR WRITTEN CONSENT OF GZA. ANY TRANSFER, REUSE, OR MODIFICATION TO THE DRAWING BY THE CLIENT OR OTHERS, WITHOUT THE PRIOR WRITTEN EXPRESS CONSENT OF GZA, WILL BE AT THE USER'S SOLE RISK AND WITHOUT ANY RISK OR LIABILITY TO GZA.

**C196 & Q171 TRANSMISSION LINE STRUCTURE  
REPLACEMENT PROJECT**

GOFFSTOWN, DUNBARTON, AND BOW, NEW HAMPSHIRE

**NOTES**

<b>GZA</b> GeoEnvironmental, Inc. Engineers and Scientists www.gza.com			
PREPARED BY:	REVIEWED BY:	CHECKED BY:	SHEET
DESIGNED BY:	DRAWN BY:	SCALE:	<b>S1</b>
DATE:	PROJECT NO.	REVISION NO.	
08/22/2022	04.0191410.18		

**Best Management Practices (BMP's) for Straw wattles**

**Definition and purpose:**

Straw wattles are burlap rolls filled with straw that trap sediment and interrupt water flow by reducing slope lengths.

**Applications:**

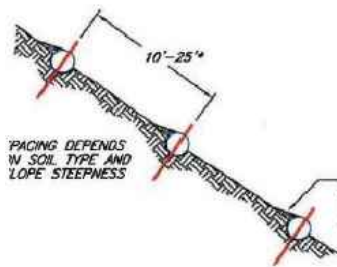
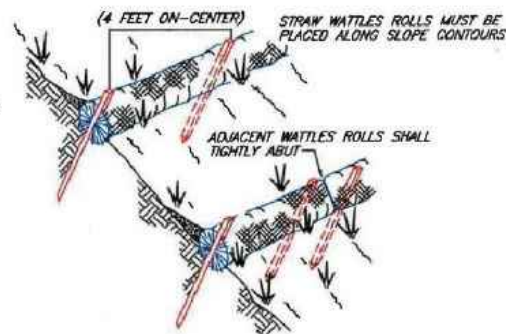
- \* Along erodible or unstabilized slopes
- \* Spread overland waterflow
- \* Trap sediment
- \* Around storm drain inlets to slow water and settle out sediment
- \* Overlap ends approximately 6 inches

**Installation:**

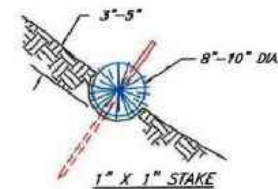
Straw wattles are installed parallel to slope contours and perpendicular to sheet flow.

Spacing\* - Dependent on slope length, soil steepness and soil type (general range 10 - 25').

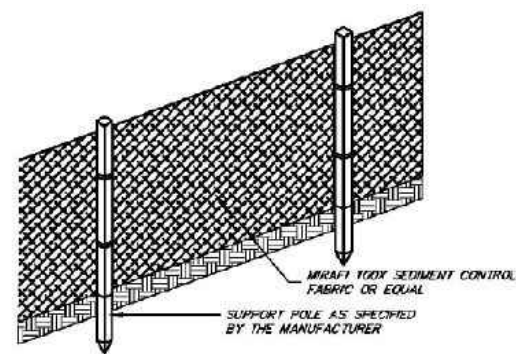
Trenching - 2"-5" inch trench  
Stacking - at each end and four foot on center (i.e. 25 foot wattle uses 6 stacks)



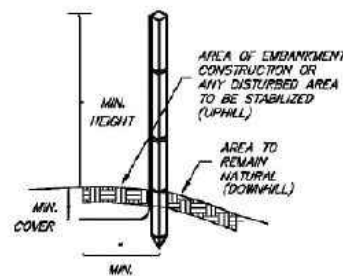
SEDIMENT, ORGANIC MATTER, AND NATIVE SEEDS ARE CAPTURED BEHIND THE WATTLE ROWS.



NOT TO SCALE



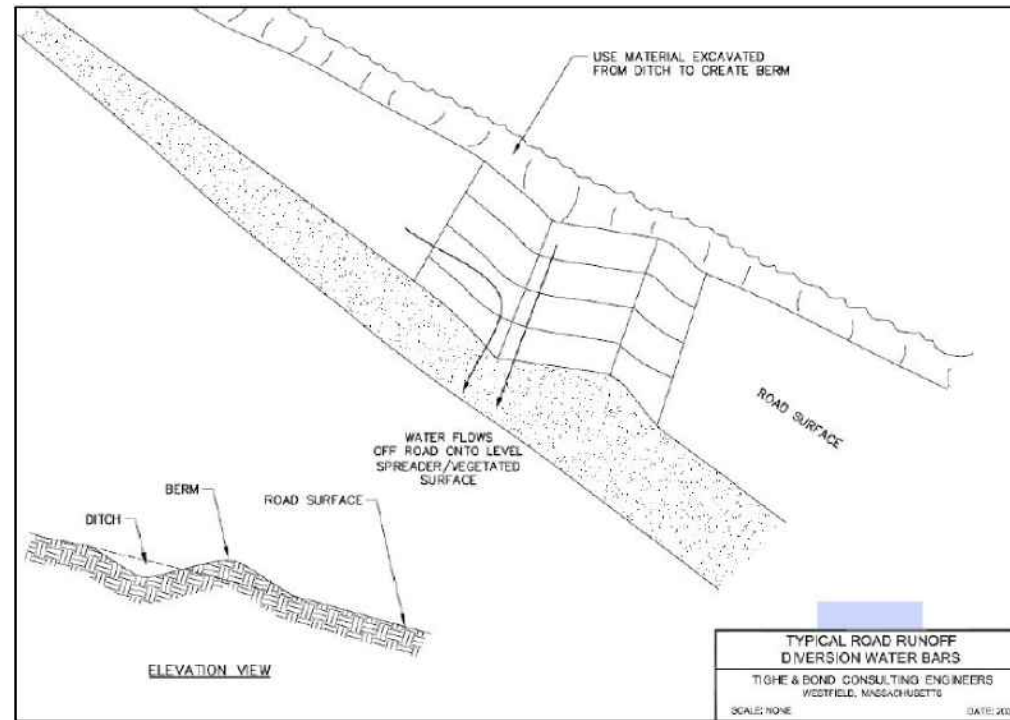
FRONT VIEW



SIDE VIEW

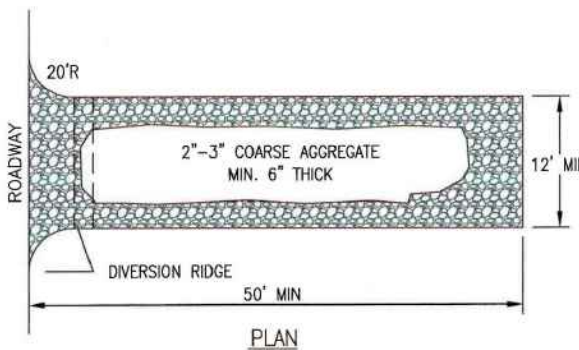
**NOTES (SILT FENCE)**

1. THE HEIGHT OF THE BARRIER SHALL NOT EXCEED 36 INCHES.
2. WHEN JOINTS ARE NECESSARY, FILTER CLOTH SHALL BE SPLICED TOGETHER ONLY AT A SUPPORT POST, WITH A MINIMUM 6-INCH OVERLAP, AND SECURELY SEALED. SEE MANUFACTURER'S RECOMMENDATIONS.
3. POSTS SHALL BE PLACED AT A MAXIMUM OF 10 FEET APART AT THE BARRIER LOCATION AND DRIVEN SECURELY INTO THE GROUND (MINIMUM OF 12 INCHES). WHEN EXTRA STRENGTH FABRIC IS USED WITHOUT THE WIRE SUPPORT FENCE, POST SPACING SHALL BE AS MANUFACTURER RECOMMENDS.
4. A TRENCH SHALL BE EXCAVATED APPROXIMATELY 6 INCHES WIDE AND 6 INCHES DEEP ALONG THE LINE OF POSTS AND UPSLOPE OF THE BARRIER IN ACCORDANCE WITH RECOMMENDATIONS.
5. THE FABRIC SHALL NOT EXTEND MORE THAN 36 INCHES ABOVE THE ORIGINAL GROUND SURFACE, AND WILL EXTEND A MINIMUM OF 8 INCHES INTO THE TRENCH. FILTER FABRIC SHALL NOT BE STAPLED TO EXISTING TREES.
6. THE TRENCH SHALL BE BACKFILLED AND THE SOIL COMPACTED OVER THE FILTER FABRIC.
7. FABRIC BARRIERS SHALL BE REMOVED WHEN THEY HAVE SERVED THEIR USEFUL PURPOSE, BUT NOT BEFORE THE UPSLOPE AREA HAS BEEN PERMANENTLY STABILIZED.
8. FILTER BARRIERS SHALL BE INSPECTED IMMEDIATELY AFTER EACH RAINFALL AND AT LEAST ONCE DAILY DURING PROLONGED RAINFALL AND ANY REQUIRED REPAIRS SHALL BE MADE IMMEDIATELY.
9. SHOULD THE FABRIC DECOMPOSE OR BECOME INEFFECTIVE PRIOR TO THE END OF THE EXPECTED USABLE LIFE AND THE BARRIER STILL BE NECESSARY, THE FABRIC SHALL BE REPLACED PROMPTLY.
10. SEDIMENT DEPOSITS SHOULD BE REMOVED WHEN THEY REACH APPROXIMATELY ONE-HALF THE HEIGHT OF THE BARRIER.
11. ANY SEDIMENT DEPOSITS REMAINING IN PLACE AFTER THE SILT FENCE OR FILTER BARRIER IS NO LONGER REQUIRED SHALL BE DRESSED TO CONFORM TO THE EXISTING GRADE, PREPARED AND SEEDED.



ELEVATION VIEW

TYPICAL ROAD RUNOFF DIVERSION WATER BARS  
TIGHE & BOND CONSULTING ENGINEERS  
WESTFIELD, MASSACHUSETTS  
SCALE: NONE DATE: 2017



PLAN

**NOTES:**

1. THE ENTRANCE SHALL BE MAINTAINED IN A CONDITION THAT WILL PREVENT TRACKING OR FLOWING OF SEDIMENT ONTO PUBLIC RIGHT-OF-WAYS. THIS MAY REQUIRE TOP DRESSING, REPAIR AND/OR CLEANOUT OF ANY MEASURES USED TO TRAP SEDIMENT.
2. WHEN NECESSARY, WHEELS SHALL BE CLEANED PRIOR TO ENTRANCE ONTO PUBLIC RIGHT-OF-WAY.

**CONSTRUCTION ENTRANCE**

NOT TO SCALE

Figure 5

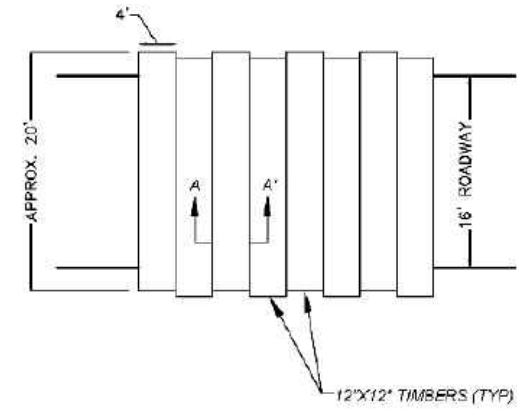
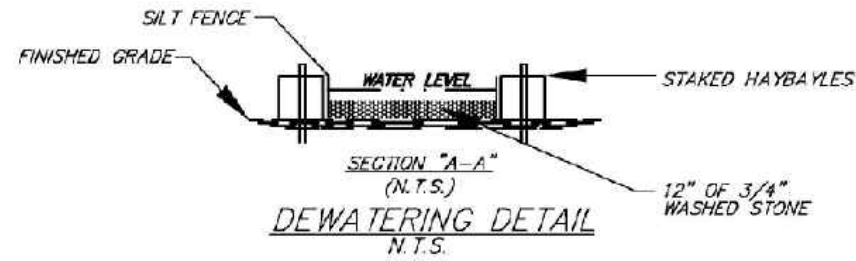
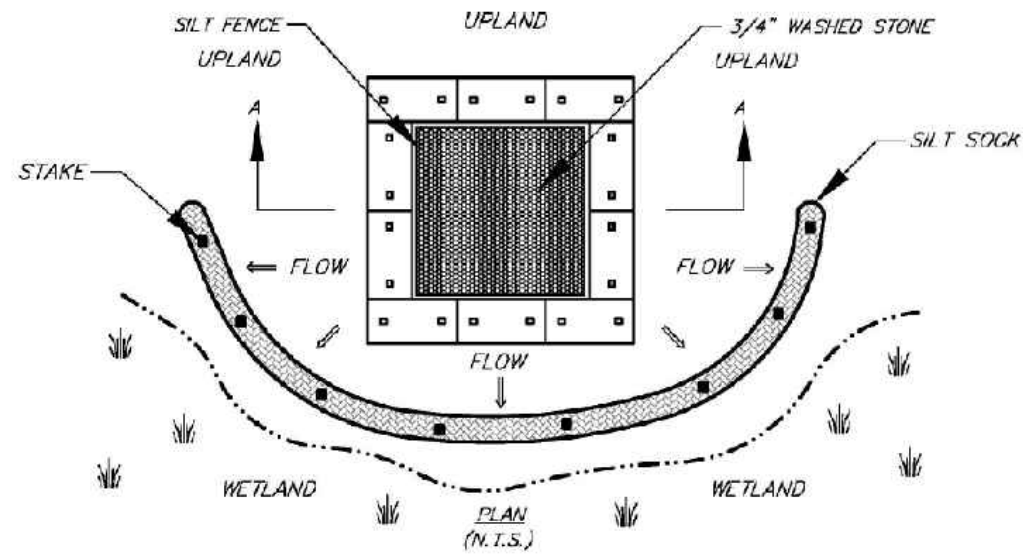
UNLESS SPECIFICALLY STATED BY WRITTEN AGREEMENT, THIS DRAWING IS THE SOLE PROPERTY OF GZA GEOENVIRONMENTAL, INC. (GZA). THE INFORMATION SHOWN ON THE DRAWING IS SOLELY FOR THE USE BY GZA'S CLIENT OR THE CLIENT'S DESIGNATED REPRESENTATIVE FOR THE SPECIFIC PROJECT AND LOCATION IDENTIFIED ON THE DRAWING. THE DRAWING SHALL NOT BE TRANSFERRED, REUSED, COPIED, OR ALTERED IN ANY MANNER FOR USE AT ANY OTHER LOCATION OR FOR ANY OTHER PURPOSE WITHOUT THE PRIOR WRITTEN CONSENT OF GZA. ANY TRANSFER, REUSE, OR MODIFICATION TO THE DRAWING BY THE CLIENT OR OTHERS, WITHOUT THE PRIOR WRITTEN EXPRESS CONSENT OF GZA, WILL BE AT THE USER'S SOLE RISK AND WITHOUT ANY RISK OR LIABILITY TO GZA.

C196 & Q171 TRANSMISSION LINE  
STRUCTURE REPLACEMENT PROJECT  
GOFFSTOWN, DUNBARTON, & BOW, NEW HAMPSHIRE

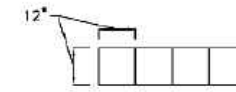
**BMP DETAILS**

PREPARED BY: GZA GeoEnvironmental, Inc. Engineers and Scientists www.gza.com		PREPARED FOR: 	
PROJ MGR: CEM	REVIEWED BY: TLT	CHECKED BY: DMZ	SHEET <b>S2</b>
DESIGNED BY: MJD	DRAWN BY: MJD	SCALE:	
DATE: 08/29/2022	PROJECT NO: 04.0191410.18	REVISION NO:	

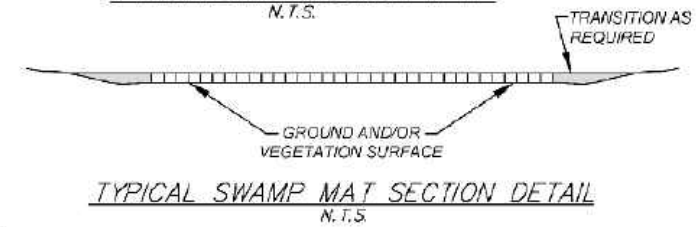
© 2022 - GZA GeoEnvironmental, Inc. P:\04\Jobs\0191410\00 - EE Shing Permitting 2019-2022\04.0191410.18 - C196 Transmission Line Str Repl Project\Figures\C196 Q171 AOT Notesheet 3 10-7.mxd, 8/22/2022, 9:16:54 AM, Sydney Wicklund



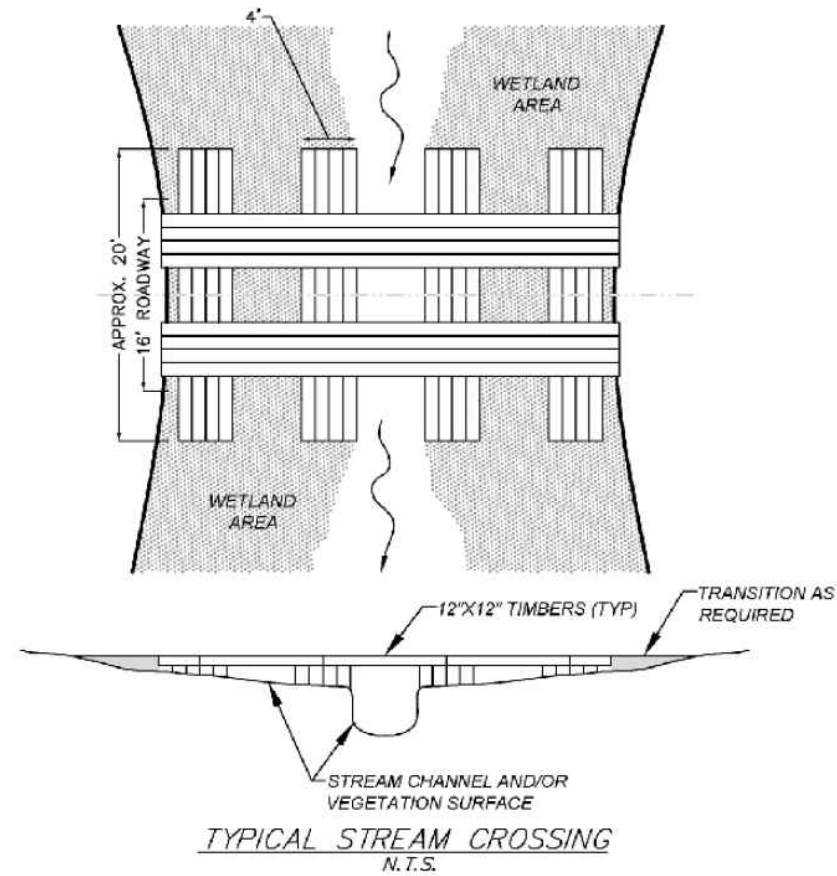
TYPICAL SWAMP MAT PLAN VIEW  
N.T.S.



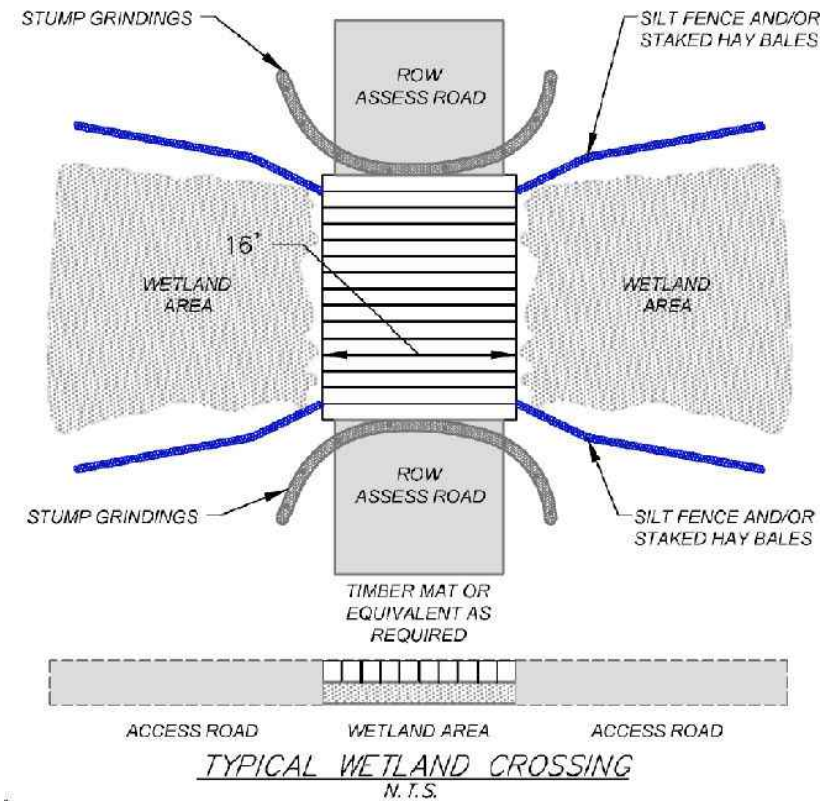
TYPICAL MAT SECTION A-A  
N.T.S.



TYPICAL SWAMP MAT SECTION DETAIL  
N.T.S.



TYPICAL STREAM CROSSING  
N.T.S.



TYPICAL WETLAND CROSSING  
N.T.S.

UNLESS SPECIFICALLY STATED BY WRITTEN AGREEMENT, THIS DRAWING IS THE SOLE PROPERTY OF GZA GEOENVIRONMENTAL, INC. (GZA). THE INFORMATION SHOWN ON THE DRAWING IS SOLELY FOR THE USE BY GZA'S CLIENT OR THE CLIENT'S DESIGNATED REPRESENTATIVE FOR THE SPECIFIC PROJECT AND LOCATION IDENTIFIED ON THE DRAWING. THE DRAWING SHALL NOT BE TRANSFERRED, REUSED, COPIED, OR ALTERED IN ANY MANNER FOR USE AT ANY OTHER LOCATION OR FOR ANY OTHER PURPOSE WITHOUT THE PRIOR WRITTEN CONSENT OF GZA. ANY TRANSFER, REUSE, OR MODIFICATION TO THE DRAWING BY THE CLIENT OR OTHERS, WITHOUT THE PRIOR WRITTEN EXPRESS CONSENT OF GZA, WILL BE AT THE USER'S SOLE RISK AND WITHOUT ANY RISK OR LIABILITY TO GZA.

C196 & Q171 TRANSMISSION LINE  
STRUCTURE REPLACEMENT PROJECT  
GOFFSTOWN, DUNBARTON, & BOW, NEW HAMPSHIRE

BMP DETAILS

PREPARED BY:  
**GZA** GeoEnvironmental, Inc.  
Engineers and Scientists  
www.gza.com

PREPARED FOR:  
**EVERSOURCE**  
ENERGY

PROJ MGR: LEW	REVIEWED BY: TLT	CHECKED BY: DMZ	SHEET <b>S3</b>
DESIGNED BY: MJD	DRAWN BY: MJD	SCALE:	
DATE: 08/22/2022	PROJECT NO: 04.0191410.18	REVISION NO:	

**NEW HAMPSHIRE FISH AND GAME AOT PERMIT CONDITIONS IN ACCORDANCE WITH ENV-WQ 1504.18 – WILDLIFE PROTECTION NOTES:**

**NHB22-1754 AND NHB22-2081 (BOW)**

PROPOSED WORK IN BOW (EXISTING STRUCTURE C196 69 TO 59) OCCURS WITHIN A PRIORITY CONSERVATION AREA FOR BLANDING'S AND SPOTTED TURTLES. THIS SHOULD BE COMMUNICATED TO PERSONNEL, AND IMPACTS SHOULD BE MINIMIZED TO THE EXTENT POSSIBLE.



1. BMPS IN THE DOCUMENT TITLED "C196 Q171 NHFG BMP RECOMMENDATIONS 8-17-22" SUBMITTED TO NHFG 8/15/22 SHALL BE ADHERED TO AT ALL TIMES DURING THIS PROJECT.
2. BLANDING'S TURTLE (STATE ENDANGERED), SPOTTED TURTLE (STATE THREATENED), EASTERN HOGNOSE SNAKE (STATE ENDANGERED), NORTHERN BLACK RACER (STATE THREATENED), AND WOOD TURTLE (STATE SPECIES OF SPECIAL CONCERN) OCCUR WITHIN THE VICINITY OF THE PROJECT AREA. ALL OPERATORS AND PERSONNEL WORKING ON OR ENTERING THE SITE SHALL BE MADE AWARE OF THE POTENTIAL PRESENCE OF THESE SPECIES AND SHALL BE PROVIDED FLYERS THAT HELP TO IDENTIFY THESE SPECIES, ALONG WITH NHFG CONTACT INFORMATION. RARE SPECIES INFORMATION (E.G. IDENTIFICATION, OBSERVATION AND REPORTING OF OBSERVATIONS, WHEN TO CONTACT NHFG IMMEDIATELY AND NHFG CONTACT INFORMATION) SHALL BE POSTED ON SITE AT ALL TIMES AND COMMUNICATED DURING MORNING TAILGATE MEETINGS PRIOR TO WORK COMMENCEMENT. SEE PLAN SHEET S7 AND S8.
3. VERNAL POOLS AND POTENTIAL VERNAL POOLS SHALL BE FLAGGED PRIOR TO WORK AND ALL IMPACTS TO VERNAL POOLS AND POTENTIAL VERNAL POOLS SHALL BE AVOIDED.
4. EASTERN HOGNOSE SNAKE OBSERVATIONS SHALL BE REPORTED IMMEDIATELY TO NHFG WILDLIFE BIOLOGISTS MELISSA WINTERS (603-479-1129) OR BRENDAN CLIFFORD (603-944-0885). IMMEDIATE REPORTING OF OBSERVATIONS IS CRITICAL AS NHFG BIOLOGISTS WILL NEED TO COLLECT DATA ON THE INDIVIDUAL.
5. TURTLES AND SNAKES MAY BE ATTRACTED TO DISTURBED GROUND DURING NESTING SEASON. TURTLE NESTING SEASON OCCURS APPROXIMATELY MAY 15TH – JUNE 30TH. NESTING AREAS MAY INCLUDE WORK PADS AND ACCESS ROADS THAT ARE NOT HARD PACK GRAVEL AND OTHER SANDY/GRAVEL WORK AREAS. ALL TURTLE SPECIES NESTS AND NORTHERN BLACK RACER NESTS ARE PROTECTED BY NH LAWS. BE AWARE OF THE POTENTIAL TO ENCOUNTER NESTING WILDLIFE IN THESE AREAS.
6. IF A TURTLE OR SNAKE NEST IS OBSERVED OR SUSPECTED, OR A TURTLE IS EXHIBITING NESTING BEHAVIORS, EVERSOURCE OR A DESIGNATED PROJECT REPRESENTATIVE SHALL CONTACT MELISSA WINTERS (603-479-1129) OR JOSH MEGYESY (978-578-0802) AT NHFG IMMEDIATELY FOR FURTHER CONSULTATION. TURTLE NESTS OR TURTLES EXHIBITING NESTING BEHAVIOR SHALL NOT BE DISTURBED. THE NEST OR SUSPECTED NEST SHALL BE MARKED (SURROUNDING ROPED OFF OR CONE BUFFER) AND AVOIDED; THIS SHALL BE COMMUNICATED TO ALL PERSONNEL ON SITE. SITE ACTIVITIES SHALL NOT OCCUR IN THE AREA SURROUNDING THE NEST OR SUSPECTED NEST UNTIL FURTHER GUIDANCE IS PROVIDED BY NHFG.
7. OBSERVATIONS OF NORTHERN BLACK RACERS IN THE MONTHS OF APRIL-MAY AND SEPTEMBER-OCTOBER MAY INDICATE THE POTENTIAL FOR A DEN SITE ON OR NEAR THE PROJECT SITE. OBSERVATIONS OF THIS SPECIES DURING THIS TIMEFRAME SHALL BE REPORTED IMMEDIATELY TO THE NEW HAMPSHIRE FISH AND GAME DEPARTMENT NONGAME AND ENDANGERED WILDLIFE ENVIRONMENTAL REVIEW PROGRAM. PLEASE CONTACT MELISSA WINTERS (603-479-1129) OR BRENDAN CLIFFORD (603-944-0885). OBSERVATIONS OF THIS SPECIES OUTSIDE OF THIS TIMEFRAME CAN FOLLOW GENERAL REPORTING GUIDANCE. PLEASE INCLUDE PHOTOGRAPH WITH TEXT IF FEASIBLE.
8. ALL MATTING WHICH WILL BE PLACED IN WATERBODIES DEEMED SUITABLE FOR HIBERNATING BLANDING'S, SPOTTED, AND WOOD TURTLES WILL BE PLACED PRIOR TO THE START OF THE INACTIVE SEASON SO AS TO PREVENT ACCIDENTAL PLACEMENT ATOP HIBERNATING TURTLES. PRIOR TO MATTING PLACEMENT IN THESE WETLANDS, THE AREA SHALL BE SWEEP BY A QUALIFIED BIOLOGIST OR HERPETOLOGIST TO ENSURE ANY TURTLES RELOCATE AWAY FROM THE AREA TO BE MATTED. AREAS IDENTIFIED AS SUITABLE HIBERNATION HABITAT SHALL BE IDENTIFIED ON PLAN SHEETS AND PROVIDED TO NHFG AT LEAST TWO WEEKS PRIOR TO BEGINNING WORK.
9. IMMEDIATELY PRIOR TO THE PLACEMENT OF MATTING IN WETLANDS WITHIN RARE TURTLE HABITAT DURING THE ACTIVE SEASON, THE AREAS SHALL BE CLEARED BY A QUALIFIED BIOLOGIST OR HERPETOLOGIST.
10. SWEEPS OF WORK AREAS AND ACCESS ROUTES SHALL BE CONDUCTED IMMEDIATELY PRIOR TO START OF WORK AND EQUIPMENT MOVEMENT IN ORDER TO MINIMIZE THE POTENTIAL OF ANIMALS ENTERING A WORK AREA BETWEEN THE SWEEP AND ACTIVITY. SWEEPS SHALL BE CONDUCTED BY STAFF TRAINED IN RARE SPECIES IDENTIFICATION AND HABITAT.
11. ALL WORK ACTIVITIES SHALL BE RESTRICTED TO THE DEFINED ROADS, CONSTRUCTION AREAS, AND STAGING AREAS, WITH NO EQUIPMENT OR MATERIALS STAGED OR STORED OUTSIDE OF THE DEFINED AREAS AS SHOWN ON PLAN SHEETS.
12. MINIMIZE WORK PAD AREAS, INCLUDING MATTING, TO THE GREATEST EXTENT POSSIBLE, ESPECIALLY IN WETLANDS AND OTHER SENSITIVE AREAS.
13. WORK PADS SHALL BE REDUCED POST-CONSTRUCTION TO 30' X 60' AND RESTORED WITH A NATIVE VEGETATION SEED MIX.
14. ALL MANUFACTURED EROSION AND SEDIMENT CONTROL PRODUCTS, WITH THE EXCEPTION OF TURF REINFORCEMENT MATS, UTILIZED FOR, BUT NOT LIMITED TO, SLOPE PROTECTION, RUNOFF DIVERSION, SLOPE INTERRUPTION, PERIMETER CONTROL, INLET PROTECTION, CHECK DAMS, AND SEDIMENT TRAPS SHALL NOT CONTAIN PLASTIC, OR MULTIFILAMENT OR MONOFILAMENT POLYPROPYLENE NETTING OR MESH WITH AN OPENING SIZE OF GREATER THAN 1/8 INCHES;
15. ALL OBSERVATIONS OF THREATENED OR ENDANGERED SPECIES ON THE PROJECT SITE SHALL BE REPORTED IMMEDIATELY TO THE NHFG NONGAME AND ENDANGERED WILDLIFE ENVIRONMENTAL REVIEW PROGRAM BY PHONE AT 603-271-2461 AND BY EMAIL AT NHFGREVIEW@WILDLIFE.NH.GOV, WITH THE EMAIL SUBJECT LINE CONTAINING THE NHB DATACHECK TOOL RESULTS LETTER ASSIGNED NUMBER, THE PROJECT NAME, AND THE TERM WILDLIFE SPECIES OBSERVATION;
16. PHOTOGRAPHS OF THE OBSERVED SPECIES AND NEARBY ELEMENTS OF HABITAT OR AREAS OF LAND DISTURBANCE SHALL BE PROVIDED TO NHFG IN DIGITAL FORMAT AT THE ABOVE EMAIL ADDRESS FOR VERIFICATION, AS FEASIBLE;
17. IN THE EVENT A THREATENED OR ENDANGERED SPECIES IS OBSERVED ON THE PROJECT SITE DURING THE TERM OF THE PERMIT, THE SPECIES SHALL NOT BE DISTURBED, HANDLED, OR HARMED IN ANY WAY PRIOR TO CONSULTATION WITH NHFG AND IMPLEMENTATION OF CORRECTIVE ACTIONS RECOMMENDED BY NHFG.  
-SITE OPERATORS SHALL BE ALLOWED TO RELOCATE WILDLIFE ENCOUNTERED IF DISCOVERED WITHIN THE ACTIVE WORK ZONE AND IF IN DIRECT HARM FROM PROJECT ACTIVITIES. WILDLIFE SHALL BE RELOCATED IN CLOSE PROXIMITY TO THE CAPTURE LOCATION BUT OUTSIDE OF THE WORK ZONE AND IN THE DIRECTION THE INDIVIDUAL WAS HEADING. NHFG SHALL BE CONTACTED IMMEDIATELY IF THIS ACTION OCCURS.
18. THE NHFG, INCLUDING ITS EMPLOYEES AND AUTHORIZED AGENTS, SHALL HAVE ACCESS TO THE PROPERTY DURING THE TERM OF THE PERMIT.

UNLESS SPECIFICALLY STATED BY WRITTEN AGREEMENT, THIS DRAWING IS THE SOLE PROPERTY OF GZA GEOENVIRONMENTAL, INC. (GZA). THE INFORMATION SHOWN ON THE DRAWING IS SOLELY FOR THE USE BY GZA'S CLIENT OR THE CLIENT'S DESIGNATED REPRESENTATIVE FOR THE SPECIFIC PROJECT AND LOCATION IDENTIFIED ON THE DRAWING. THE DRAWING SHALL NOT BE TRANSFERRED, REUSED, COPIED, OR ALTERED IN ANY MANNER FOR USE AT ANY OTHER LOCATION OR FOR ANY OTHER PURPOSE WITHOUT THE PRIOR WRITTEN CONSENT OF GZA. ANY TRANSFER, REUSE, OR MODIFICATION TO THE DRAWING BY THE CLIENT OR OTHERS, WITHOUT THE PRIOR WRITTEN EXPRESS CONSENT OF GZA, WILL BE AT THE USER'S SOLE RISK AND WITHOUT ANY RISK OR LIABILITY TO GZA.

**C196 & Q171 TRANSMISSION LINE STRUCTURE REPLACEMENT PROJECT**

GOFFSTOWN, DUNBARTON, AND BOW, NEW HAMPSHIRE

**NOTES**

PREPARED BY:  <b>GZA</b> GeoEnvironmental, Inc. Engineers and Scientists www.gza.com		PREPARED FOR:  <b>EVERSOURCE</b> ENERGY	
PROJ MGR: LEW	REVIEWED BY: TLT	CHECKED BY: DMZ	SHEET <b>S4</b>
DESIGNED BY: MJD	DRAWN BY: MJD	SCALE:	
DATE: 12/19/2022	PROJECT NO: 04.0191410.18	REVISION NO:	



**NEW HAMPSHIRE FISH AND GAME AOT PERMIT CONDITIONS IN ACCORDANCE WITH ENV-WQ 1504.18 – WILDLIFE PROTECTION NOTES:**

**NHB22-1755 (DUNBARTON)**

PROPOSED WORK IN DUNBARTON (C196 EXISTING STRUCTURE 70 TO 74) OCCURS WITHIN A PRIORITY CONSERVATION AREA FOR BLANDING'S AND SPOTTED TURTLES. THIS SHOULD BE COMMUNICATED TO PERSONNEL, AND IMPACTS SHOULD BE MINIMIZED TO THE EXTENT POSSIBLE.



1. BMPS IN THE DOCUMENT TITLED "C196 Q171 NHFG BMP RECOMMENDATIONS 8-17-22" SUBMITTED TO NHFG 8/15/22 (ATTACHED) SHALL BE ADHERED TO AT ALL TIMES DURING THIS PROJECT.
2. BLANDING'S TURTLE (STATE ENDANGERED), SPOTTED TURTLE (STATE THREATENED) , AND WOOD TURTLE (STATE SPECIES OF SPECIAL CONCERN) OCCUR WITHIN THE VICINITY OF THE PROJECT AREA. ALL OPERATORS AND PERSONNEL WORKING ON OR ENTERING THE SITE SHALL BE MADE AWARE OF THE POTENTIAL PRESENCE OF THESE SPECIES AND SHALL BE PROVIDED FLYERS THAT HELP TO IDENTIFY THESE SPECIES, ALONG WITH NHFG CONTACT INFORMATION. RARE SPECIES INFORMATION (E.G. IDENTIFICATION, OBSERVATION AND REPORTING OF OBSERVATIONS, WHEN TO CONTACT NHFG IMMEDIATELY AND NHFG CONTACT INFORMATION) SHALL BE POSTED ON SITE AT ALL TIMES AND COMMUNICATED DURING MONITORING TAILGATE MEETINGS PRIOR TO WORK COMMENCEMENT. SEE PLAN SHEET S7 AND S8.
3. VERNAL POOLS AND POTENTIAL VERNAL POOLS SHALL BE FLAGGED PRIOR TO WORK AND ALL IMPACTS TO VERNAL POOLS AND POTENTIAL VERNAL POOLS SHALL BE AVOIDED.
4. TURTLES MAY BE ATTRACTED TO DISTURBED GROUND DURING NESTING SEASON. TURTLE NESTING SEASON OCCURS APPROXIMATELY MAY 15TH – JUNE 30TH. NESTING AREAS MAY INCLUDE WORK PADS AND ACCESS ROADS THAT ARE NOT HARD PACK GRAVEL AND OTHER SANDY/GRAVEL WORK AREAS. ALL TURTLE SPECIES NESTS ARE PROTECTED BY NH LAWS. BE AWARE OF THE POTENTIAL TO ENCOUNTER NESTING WILDLIFE IN THESE AREAS.
5. IF A TURTLE NEST IS OBSERVED OR SUSPECTED, OR A TURTLE IS EXHIBITING NESTING BEHAVIORS, EVERSOURCE OR A DESIGNATED PROJECT REPRESENTATIVE SHALL CONTACT MELISSA WINTERS (603-479-1129) OR JOSH MEGYESY (978-578-0802) AT NHFG IMMEDIATELY FOR FURTHER CONSULTATION. TURTLE NESTS OR TURTLES EXHIBITING NESTING BEHAVIOR SHALL NOT BE DISTURBED. THE NEST OR SUSPECTED NEST SHALL BE MARKED (SURROUNDING ROPED OFF OR CONE BUFFER) AND AVOIDED; THIS SHALL BE COMMUNICATED TO ALL PERSONNEL ONSITE. SITE ACTIVITIES SHALL NOT OCCUR IN THE AREA SURROUNDING THE NEST OR SUSPECTED NEST UNTIL FURTHER GUIDANCE IS PROVIDED BY NHFG.
6. ALL MATTING WHICH WILL BE PLACED IN WATERBODIES DEEMED SUITABLE FOR HIBERNATING BLANDING'S, SPOTTED, AND WOOD TURTLES WILL BE PLACED PRIOR TO THE START OF THE INACTIVE SEASON SO AS TO PREVENT ACCIDENTAL PLACEMENT ATOP HIBERNATING TURTLES. PRIOR TO MATTING PLACEMENT IN THESE WETLANDS, THE AREA SHALL BE SWEEP BY A QUALIFIED BIOLOGIST OR HERPETOLOGIST TO ENSURE ANY TURTLES RELOCATE AWAY FROM THE AREA TO BE MATTED. AREAS IDENTIFIED AS SUITABLE HIBERNATING HABITAT SHALL BE IDENTIFIED ON PLAN SHEETS AND PROVIDED TO NHFG AT LEAST TWO WEEKS PRIOR TO BEGINNING WORK.
7. IMMEDIATELY PRIOR TO THE PLACEMENT OF MATTING IN WETLANDS WITHIN RARE TURTLE HABITAT DURING THE ACTIVE SEASON, THE AREAS SHALL BE CLEARED BY A QUALIFIED BIOLOGIST OR HERPETOLOGIST.
8. SWEEPS OF WORK AREAS AND ACCESS ROUTES SHALL BE CONDUCTED IMMEDIATELY PRIOR TO START OF WORK AND EQUIPMENT MOVEMENT IN ORDER TO MINIMIZE THE POTENTIAL OF ANIMALS ENTERING A WORK AREA BETWEEN THE SWEEP AND ACTIVITY. SWEEPS SHALL BE CONDUCTED BY STAFF TRAINED IN RARE SPECIES IDENTIFICATION AND HABITAT.
9. ALL WORK ACTIVITIES SHALL BE RESTRICTED TO THE DEFINED ROADS, CONSTRUCTION AREAS, AND STAGING AREAS, WITH NO EQUIPMENT OR MATERIALS STAGED OR STORED OUTSIDE OF THE DEFINED AREAS AS SHOWN ON PLAN SHEETS.
10. MINIMIZE WORK PAD AREAS, INCLUDING MATTING, TO THE GREATEST EXTENT POSSIBLE, ESPECIALLY IN WETLANDS AND OTHER SENSITIVE AREAS.
11. WORK PADS SHALL BE REDUCED POST CONSTRUCTION TO 30' X 60' AND RESTORED WITH A NATIVE VEGETATION SEED MIX.
12. ALL MANUFACTURED EROSION AND SEDIMENT CONTROL PRODUCTS, WITH THE EXCEPTION OF TURF REINFORCEMENT MATS, UTILIZED FOR, BUT NOT LIMITED TO, SLOPE PROTECTION, RUNOFF DIVERSION, SLOPE INTERRUPTION, PERIMETER CONTROL, INLET PROTECTION, CHECK DAMS, AND SEDIMENT TRAPS SHALL NOT CONTAIN PLASTIC, OR MULTIFILAMENT OR MONOFILAMENT POLYPROPYLENE NETTING OR MESH WITH AN OPENING SIZE OF GREATER THAN 1/8 INCHES;
13. ALL OBSERVATIONS OF THREATENED OR ENDANGERED SPECIES ON THE PROJECT SITE SHALL BE REPORTED IMMEDIATELY TO THE NHFG NONGAME AND ENDANGERED WILDLIFE ENVIRONMENTAL REVIEW PROGRAM BY PHONE AT 603-271-2461 AND BY EMAIL AT NHFGREVIEW@WILDLIFE.NH.GOV, WITH THE EMAIL SUBJECT LINE CONTAINING THE NHB DATACHECK TOOL RESULTS LETTER ASSIGNED NUMBER, THE PROJECT NAME, AND THE TERM WILDLIFE SPECIES OBSERVATION;
14. PHOTOGRAPHS OF THE OBSERVED SPECIES AND NEARBY ELEMENTS OF HABITAT OR AREAS OF LAND DISTURBANCE SHALL BE PROVIDED TO NHFG IN DIGITAL FORMAT AT THE ABOVE EMAIL ADDRESS FOR VERIFICATION, AS FEASIBLE;
15. IN THE EVENT A THREATENED OR ENDANGERED SPECIES IS OBSERVED ON THE PROJECT SITE DURING THE TERM OF THE PERMIT, THE SPECIES SHALL NOT BE DISTURBED, HANDLED, OR HARMED IN ANY WAY PRIOR TO CONSULTATION WITH NHFG AND IMPLEMENTATION OF CORRECTIVE ACTIONS RECOMMENDED BY NHFG.  
-SITE OPERATORS SHALL BE ALLOWED TO RELOCATE WILDLIFE ENCOUNTERED IF DISCOVERED WITHIN THE ACTIVE WORK ZONE AND IF IN DIRECT HARM FROM PROJECT ACTIVITIES. WILDLIFE SHALL BE RELOCATED IN CLOSE PROXIMITY TO THE CAPTURE LOCATION BUT OUTSIDE OF THE WORK ZONE AND IN THE DIRECTION THE INDIVIDUAL WAS HEADING. NHFG SHALL BE CONTACTED IMMEDIATELY IF THIS ACTION OCCURS.
16. THE NHFG, INCLUDING ITS EMPLOYEES AND AUTHORIZED AGENTS, SHALL HAVE ACCESS TO THE PROPERTY DURING THE TERM OF THE PERMIT.

UNLESS SPECIFICALLY STATED BY WRITTEN AGREEMENT, THIS DRAWING IS THE SOLE PROPERTY OF GZA GEOENVIRONMENTAL, INC. (GZA). THE INFORMATION SHOWN ON THE DRAWING IS SOLELY FOR THE USE BY GZA'S CLIENT OR THE CLIENT'S DESIGNATED REPRESENTATIVE FOR THE SPECIFIC PROJECT AND LOCATION IDENTIFIED ON THE DRAWING. THE DRAWING SHALL NOT BE TRANSFERRED, REUSED, COPIED, OR ALTERED IN ANY MANNER FOR USE AT ANY OTHER LOCATION OR FOR ANY OTHER PURPOSE WITHOUT THE PRIOR WRITTEN CONSENT OF GZA. ANY TRANSFER, REUSE, OR MODIFICATION TO THE DRAWING BY THE CLIENT OR OTHERS, WITHOUT THE PRIOR WRITTEN EXPRESS CONSENT OF GZA, WILL BE AT THE USER'S SOLE RISK AND WITHOUT ANY RISK OR LIABILITY TO GZA.

**C196 & Q171 TRANSMISSION LINE STRUCTURE REPLACEMENT PROJECT**

GOFFSTOWN, DUNBARTON, AND BOW, NEW HAMPSHIRE

**NOTES**

PREPARED BY:  <b>GZA</b> GeoEnvironmental, Inc. Engineers and Scientists www.gza.com		PREPARED FOR: 	
PROJ MGR: LEW	REVIEWED BY: TLT	CHECKED BY: DMZ	SHEET <b>S5</b>
DESIGNED BY: MJD	DRAWN BY: MJD	SCALE:	
DATE: 12/20/2022	PROJECT NO: 04.0191410.18	REVISION NO:	

**NEW HAMPSHIRE FISH AND GAME AOT PERMIT CONDITIONS IN ACCORDANCE WITH ENV-WQ 1504.18 – WILDLIFE PROTECTION NOTES:**

**NHB22-1756 (GOFFSTOWN)**

PROPOSED WORK IN GOFFSTOWN (EXISTING STRUCTURE Q171 139 TO 136) OCCURS WITHIN A PRIORITY CONSERVATION AREA FOR WOOD TURTLES AND POPULATIONS IN THE VICINITY ARE BEING MONITORED BY NHFG. THIS SHOULD BE COMMUNICATED TO PERSONNEL, AND IMPACTS SHOULD BE MINIMIZED TO THE EXTENT POSSIBLE.

1. BMPS IN THE DOCUMENT TITLED "C196 Q171 NHFG BMP RECOMMENDATIONS 8-17-22" SUBMITTED TO NHFG 8/15/22 (ATTACHED) SHALL BE ADHERED TO AT ALL TIMES DURING THIS PROJECT.
2. BLANDING'S TURTLE (STATE ENDANGERED), SPOTTED TURTLE (STATE THREATENED), NORTHERN BLACK RACER (STATE THREATENED), AND WOOD TURTLE (STATE SPECIES OF SPECIAL CONCERN) OCCUR WITHIN THE VICINITY OF THE PROJECT AREA. ALL OPERATORS AND PERSONNEL WORKING ON OR ENTERING THE SITE SHALL BE MADE AWARE OF THE POTENTIAL PRESENCE OF THESE SPECIES AND SHALL BE PROVIDED FLYERS THAT HELP TO IDENTIFY THESE SPECIES, ALONG WITH NHFG CONTACT INFORMATION. RARE SPECIES INFORMATION (E.G. IDENTIFICATION, OBSERVATION AND REPORTING OF OBSERVATIONS, WHEN TO CONTACT NHFG IMMEDIATELY AND NHFG CONTACT INFORMATION) SHALL BE POSTED ON SITE AT ALL TIMES AND COMMUNICATED DURING MORNING TAILGATE MEETINGS PRIOR TO WORK COMMENCEMENT. SEE PLAN SHEET S7 AND S8.
3. VERNAL POOLS AND POTENTIAL VERNAL POOLS SHALL BE FLAGGED PRIOR TO WORK AND ALL IMPACTS TO VERNAL POOLS AND POTENTIAL VERNAL POOLS SHALL BE AVOIDED.
4. TURTLES AND SNAKES MAY BE ATTRACTED TO DISTURBED GROUND DURING NESTING SEASON. TURTLE NESTING SEASON OCCURS APPROXIMATELY MAY 15TH – JUNE 30TH. NESTING AREAS MAY INCLUDE WORK PADS AND ACCESS ROADS THAT ARE NOT HARD PACK GRAVEL AND OTHER SANDY/GRAVEL WORK AREAS. ALL TURTLE SPECIES NESTS AND NORTHERN BLACK RACER NESTS ARE PROTECTED BY NH LAWS. BE AWARE OF THE POTENTIAL TO ENCOUNTER NESTING WILDLIFE IN THESE AREAS.
5. IF A TURTLE OR SNAKE NEST IS OBSERVED OR SUSPECTED, OR A TURTLE IS EXHIBITING NESTING BEHAVIORS, EVERSOURCE OR A DESIGNATED REPRESENTATIVE SHALL CONTACT MELISSA WINTERS (603-479-1129) OR JOSH MEGYESY (978-578-0802) AT NHFG IMMEDIATELY FOR FURTHER CONSULTATION. TURTLE NESTS OR TURTLES EXHIBITING NESTING BEHAVIOR SHALL NOT BE DISTURBED. THE NEST OR SUSPECTED NEST SHALL BE MARKED (SURROUNDING ROPED OFF OR CONE BUFFER) AND AVOIDED; THIS SHALL BE COMMUNICATED TO ALL PERSONNEL ONSITE. SITE ACTIVITIES SHALL NOT OCCUR IN THE AREA SURROUNDING THE NEST OR SUSPECTED NEST UNTIL FURTHER GUIDANCE IS SUGGESTED BY NHFG.
6. OBSERVATIONS OF NORTHERN BLACK RACERS SHALL BE REPORTED IMMEDIATELY TO THE NEW HAMPSHIRE FISH AND GAME DEPARTMENT NONGAME AND ENDANGERED WILDLIFE ENVIRONMENTAL REVIEW PROGRAM. PLEASE CONTACT MELISSA WINTERS (603-479-1129) OR BRENDAN CLIFFORD (603-944-0885). PLEASE INCLUDE PHOTOGRAPH WITH TEXT IF FEASIBLE. OBSERVATIONS OF NORTHERN BLACK RACERS IN THE MONTHS OF APRIL-MAY AND SEPTEMBER-OCTOBER MAY INDICATE THE POTENTIAL FOR A DEN SITE ON OR NEAR THE PROJECT SITE.
7. ALL MATTING WHICH WILL BE PLACED IN WATERBODIES DEEMED SUITABLE FOR HIBERNATING BLANDING'S, SPOTTED, AND WOOD TURTLES WILL BE PLACED PRIOR TO THE START OF THE INACTIVE SEASON SO AS TO PREVENT ACCIDENTAL PLACEMENT ATOP HIBERNATING TURTLES. PRIOR TO MATTING PLACEMENT IN THESE WETLANDS, THE AREA SHALL BE SWEEP BY A QUALIFIED BIOLOGIST OR HERPETOLOGIST TO ENSURE ANY TURTLES RELOCATE AWAY FROM THE AREA TO BE MATTED. AREAS IDENTIFIED AS SUITABLE HIBERNATION HABITAT SHALL BE IDENTIFIED ON PLAN SHEETS AND PROVIDED TO NHFG AT LEAST TWO WEEKS PRIOR TO BEGINNIGN WORK.
8. IMMEDIATELY PRIOR TO THE PLACEMENT OF MATTING IN WETLANDS WITHIN RARE TURTLE HABITAT DURING THE ACTIVE SEASON, THE AREAS SHALL BE CLEARED BY A QUALIFIED BIOLOGIST OR HERPETOLOGIST.
9. SWEEPS OF WORK AREAS AND ACCESS ROUTES SHALL BE CONDUCTED IMMEDIATELY PRIOR TO START OF WORK AND EQUIPMENT MOVEMENT IN ORDER TO MINIMIZE THE POTENTIAL OF ANIMALS ENTERING A WORK AREA BETWEEN THE SWEEP AND ACTIVITY. SWEEPS SHALL BE CONDUCTED BY STAFF TRAINED IN RARE SPECIES IDENTIFICATION AND HABITAT.
10. ALL WORK ACTIVITIES SHALL BE RESTRICTED TO THE DEFINED ROADS, CONSTRUCTION AREAS, AND STAGING AREAS, WITH NO EQUIPMENT OR MATERIALS STAGED OR STORED OUTSIDE OF THE DEFINED AREAS AS SHOWN ON PLAN SHEETS.
11. MINIMIZE WORK PAD AREAS, INCLUDING MATTING, TO THE GREATEST EXTENT POSSIBLE, ESPECIALLY IN WETLANDS AND OTHER SENSITIVE AREAS.
12. WORK PADS SHALL BE REDUCED POST-CONSTRUCTION TO 30' X 60' AND RESTORED WITH A NATIVE VEGETATION MIX.
13. ALL MANUFACTURED EROSION AND SEDIMENT CONTROL PRODUCTS, WITH THE EXCEPTION OF TURF REINFORCEMENT MATS, UTILIZED FOR, BUT NOT LIMITED TO, SLOPE PROTECTION, RUNOFF DIVERSION, SLOPE INTERRUPTION, PERIMETER CONTROL, INLET PROTECTION, CHECK DAMS, AND SEDIMENT TRAPS SHALL NOT CONTAIN PLASTIC, OR MULTIFILAMENT OR MONOFILAMENT POLYPROPYLENE NETTING OR MESH WITH AN OPENING SIZE OF GREATER THAN 1/8 INCHES;
14. ALL OBSERVATIONS OF THREATENED OR ENDANGERED SPECIES ON THE PROJECT SITE SHALL BE REPORTED IMMEDIATELY TO THE NHFG NONGAME AND ENDANGERED WILDLIFE ENVIRONMENTAL REVIEW PROGRAM BY PHONE AT 603-271-2461 AND BY EMAIL AT NHFGREVIEW@WILDLIFE.NH.GOV, WITH THE EMAIL SUBJECT LINE CONTAINING THE NHB DATACHECK TOOL RESULTS LETTER ASSIGNED NUMBER, THE PROJECT NAME, AND THE TERM WILDLIFE SPECIES OBSERVATION;
15. PHOTOGRAPHS OF THE OBSERVED SPECIES AND NEARBY ELEMENTS OF HABITAT OR AREAS OF LAND DISTURBANCE SHALL BE PROVIDED TO NHFG IN DIGITAL FORMAT AT THE ABOVE EMAIL ADDRESS FOR VERIFICATION, AS FEASIBLE;
16. IN THE EVENT A THREATENED OR ENDANGERED SPECIES IS OBSERVED ON THE PROJECT SITE DURING THE TERM OF THE PERMIT, THE SPECIES SHALL NOT BE DISTURBED, HANDLED, OR HARMED IN ANY WAY PRIOR TO CONSULTATION WITH NHFG AND IMPLEMENTATION OF CORRECTIVE ACTIONS RECOMMENDED BY NHFG.  
-SITE OPERATORS SHALL BE ALLOWED TO RELOCATE WILDLIFE ENCOUNTERED IF DISCOVERED WITHIN THE ACTIVE WORK ZONE AND IF IN DIRECT HARM FROM PROJECT ACTIVITIES. WILDLIFE SHALL BE RELOCATED IN CLOSE PROXIMITY TO THE CAPTURE LOCATION BUT OUTSIDE OF THE WORK ZONE AND IN THE DIRECTION THE INDIVIDUAL WAS HEADING. NHFG SHALL BE CONTACTED IMMEDIATELY IF THIS ACTION OCCURS.
17. THE NHFG, INCLUDING ITS EMPLOYEES AND AUTHORIZED AGENTS, SHALL HAVE ACCESS TO THE PROPERTY DURING THE TERM OF THE PERMIT.



**ADDITIONAL RECOMMENDATIONS**

18. SMOOTH GREEN SNAKES (STATE SPECIES OF SPECIAL CONCERN) OCCUR WITHIN THE VICINITY OF THE PROJECT SITE. SITE OPERATORS SHOULD BE INFORMED OF THE POTENTIAL PRESENCES OF THIS SPECIES AND SHALL BE PROVIDED A FLYER THAT HELPS TO IDENTIFY THIS SPECIES ALONG WITH NHFG CONTACT INFORMATION. SEE PLAN SHEET S7 AND S8.

UNLESS SPECIFICALLY STATED BY WRITTEN AGREEMENT, THIS DRAWING IS THE SOLE PROPERTY OF GZA GEOENVIRONMENTAL, INC. (GZA). THE INFORMATION SHOWN ON THE DRAWING IS SOLELY FOR THE USE BY GZA'S CLIENT OR THE CLIENT'S DESIGNATED REPRESENTATIVE FOR THE SPECIFIC PROJECT AND LOCATION IDENTIFIED ON THE DRAWING. THE DRAWING SHALL NOT BE TRANSFERRED, REUSED, COPIED, OR ALTERED IN ANY MANNER FOR USE AT ANY OTHER LOCATION OR FOR ANY OTHER PURPOSE WITHOUT THE PRIOR WRITTEN CONSENT OF GZA. ANY TRANSFER, REUSE, OR MODIFICATION TO THE DRAWING BY THE CLIENT OR OTHERS, WITHOUT THE PRIOR WRITTEN EXPRESS CONSENT OF GZA, WILL BE AT THE USER'S SOLE RISK AND WITHOUT ANY RISK OR LIABILITY TO GZA.

**C196 & Q171 TRANSMISSION LINE STRUCTURE REPLACEMENT PROJECT**  
  
GOFFSTOWN, DUNBARTON, AND BOW, NEW HAMPSHIRE

**NOTES**

 <b>GZA</b> GeoEnvironmental, Inc. Engineers and Scientists www.gza.com		PREPARED FOR: 	
PROJ MGR: LEW	REVIEWED BY: TLT	CHECKED BY: DMZ	SHEET  <b>S6</b>
DESIGNED BY: MJD	DRAWN BY: MJD	SCALE:	
DATE: 12/20/2022	PROJECT NO: 04.0191410.18	REVISION NO:	

**WOOD TURTLE (GLYPTEMYS INSCULPTA)**

STATE SPECIES OF SPECIAL CONCERN



**WOOD TURTLE IDENTIFICATION**

1. NECK AND FORELIMBS ARE ORANGE.
2. CHARACTERIZED BY ITS HIGHLY SCULPTED SHELL WITH EACH LARGE SCUTE TAKING ON AN IRREGULAR PYRAMIDAL SHAPE.
3. ADULTS CAN BE 5-8 INCHES LONG.

**BLANDING'S TURTLE (EMYDOIDEA BLANDINGII)**

STATE ENDANGERED



**BLANDING'S TURTLE IDENTIFICATION**

1. LARGE, DARK/BLACK DOMED SHELL WITH LIGHTER SPECKLES.
2. DISTINCT YELLOW THROAT/CHIN.
3. AQUATIC BUT OFTEN MOVES ON LAND.

\*ALL PHOTOS AND IDENTIFICATION INFORMATION COURTESY OF NEW HAMPSHIRE FISH AND GAME DEPARTMENT.

UNLESS SPECIFICALLY STATED BY WRITTEN AGREEMENT, THIS DRAWING IS THE SOLE PROPERTY OF GZA GEOENVIRONMENTAL, INC. (GZA). THE INFORMATION SHOWN ON THE DRAWING IS SOLELY FOR THE USE BY GZA'S CLIENT OR THE CLIENT'S DESIGNATED REPRESENTATIVE FOR THE SPECIFIC PROJECT AND LOCATION IDENTIFIED ON THE DRAWING. THE DRAWING SHALL NOT BE TRANSFERRED, REUSED, COPIED, OR ALTERED IN ANY MANNER FOR USE AT ANY OTHER LOCATION OR FOR ANY OTHER PURPOSE WITHOUT THE PRIOR WRITTEN CONSENT OF GZA. ANY TRANSFER, REUSE, OR MODIFICATION TO THE DRAWING BY THE CLIENT OR OTHERS, WITHOUT THE PRIOR WRITTEN EXPRESS CONSENT OF GZA, WILL BE AT THE USER'S SOLE RISK AND WITHOUT ANY RISK OR LIABILITY TO GZA.

C196 AND Q171 TRANSMISSION LINE  
STRUCTURE REPLACEMENT PROJECT  
BOW, DUNBARTON, AND GOFFSTOWN,  
NEW HAMPSHIRE

**WILDLIFE NOTES**

PREPARED BY: <b>GZA</b> GeoEnvironmental, Inc. Engineers and Scientists www.gza.com		PREPARED FOR: <b>EVERSOURCE</b> ENERGY	
PROJ MGR: LEW	REVIEWED BY: TLT	CHECKED BY: DMZ	SHEET <b>S7</b>
DESIGNED BY: MJD	DRAWN BY: MJD	SCALE:	
DATE: 08/23/2022	PROJECT NO: 04.0191410.18	REVISION NO:	

**NORTHERN BLACK RACER (COLUBER CONSTRICTOR)**

STATE THREATENED



**NORTHERN BLACK RACER IDENTIFICATION**

1. SOLID BLACK WITH A WHITE THROAT.
2. SLENDER WITH GLOSSY SCALES.
3. 3-6 FT. LONG.
4. HATCHLINGS ARE VERY SMALL AND PATTERNED.

**SMOOTH GREEN SNAKE (LIOCHLOROPHIS VERNALIS)**

SPECIES OF SPECIAL CONCERN



**SMOOTH GREEN SNAKE IDENTIFICATION**

1. A THIN, SLENDER BRIGHT-GREEN SNAKE MEASURING 10-20 INCHES
2. THE UNDERSIDE IS WHILE OR PALE YELLOW

**EASTERN HOGNOSE SNAKE (HETERODON PLATIRHINOS)**

STATE ENDANGERED



**EASTERN HOGNOSE IDENTIFICATION**



1. 20-35 INCHES LONG
2. UPTURNED SNOUT
3. KEELED DORSAL SCALES
4. LIGHT AND DARK BLOTCHES OF COLOR FROM BROWN TO RED AND ORANGE

UNLESS SPECIFICALLY STATED BY WRITTEN AGREEMENT, THIS DRAWING IS THE SOLE PROPERTY OF GZA GEOENVIRONMENTAL, INC. (GZA). THE INFORMATION SHOWN ON THE DRAWING IS SOLELY FOR THE USE BY GZA'S CLIENT OR THE CLIENT'S DESIGNATED REPRESENTATIVE FOR THE SPECIFIC PROJECT AND LOCATION IDENTIFIED ON THE DRAWING. THE DRAWING SHALL NOT BE TRANSFERRED, REUSED, COPIED, OR ALTERED IN ANY MANNER FOR USE AT ANY OTHER LOCATION OR FOR ANY OTHER PURPOSE WITHOUT THE PRIOR WRITTEN CONSENT OF GZA. ANY TRANSFER, REUSE, OR MODIFICATION TO THE DRAWING BY THE CLIENT OR OTHERS, WITHOUT THE PRIOR WRITTEN EXPRESS CONSENT OF GZA, WILL BE AT THE USER'S SOLE RISK AND WITHOUT ANY RISK OR LIABILITY TO GZA.

**C196 AND Q171 TRANSMISSION LINE  
STRUCTURE REPLACEMENT PROJECT**

BOW, DUNBARTON, AND BOW,  
NEW HAMPSHIRE

**WILDLIFE NOTES**

PREPARED BY:  <b>GZA</b> GeoEnvironmental, Inc. Engineers and Scientists www.gza.com		PREPARED FOR: 	
PROJ MGR: LEW	REVIEWED BY: TLT	CHECKED BY: DMZ	SHEET
DESIGNED BY: MJD	DRAWN BY: MJD	SCALE:	
DATE: 08/23/2022	PROJECT NO: 04.0191410.18	REVISION NO:	<b>S8</b>