

■ PLOT #2 - PRIOR TO BEGINNING WORK AT THIS LOCATION, PLEASE SEE WMNF BMPS (NOTESHEET 7) - MATTING MUST BE REMOVED PRIOR TO THE START OF THE 2024 GROWING SEASON (REMOVED BY MAY 1, 2024).

APPROX. TEMP WETLAND MATTING: 15,860 SF

APPROX. TEMP WETLAND MATTING: 538 SF

APPROX. TEMP WETLAND MATTING: 3,644 SF

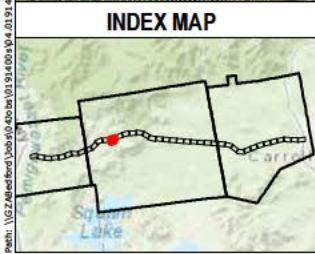
APPROX. TEMP WETLAND MATTING: 5,410 SF

APPROX. TEMP WETLAND MATTING: 291 SF

APPROX. TEMP WETLAND MATTING: 707 SF

APPROX. TEMP WETLAND MATTING: 494 SF

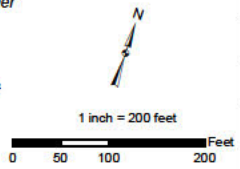
APPROX. TEMP WETLAND MATTING: 417 SF



- | | | | |
|--|--|--|--|
| <ul style="list-style-type: none">PROPOSED POLE REPLACEMENTEXISTING STRUCTURESTRUCTURE TO BE REMOVEDTEMPORARY WETLAND IMPACTWINTERING HABITATPARCEL BOUNDARYEVERSOURCE OWNED PARCELSTATE OWNED PARCELWHITE MOUNTAIN NATIONAL FORESTRECREATIONAL TRAILSSTONE WALL | <ul style="list-style-type: none">TOWN MAINTAINEDSTATE MAINTAINEDPRIVATE ROADCLASS 6 TOWN ROADCULVERTB112 TRANSMISSION LINEDISTRIBUTION LINESITE BOUNDARYFENCESTEMPORARY UPLAND MATTINGDELINEATED WETLANDS | <ul style="list-style-type: none">NHD FLOWLINESDELINEATED PERENNIAL STREAMDELINEATED INTERMITTENT STREAMPOTENTIAL VERNAL POOLRARE PLANT SURVEY PLOTCONFIRMED VERNAL POOLTOWN BOUNDARYWORK PADPULL PADGATE | <ul style="list-style-type: none">APPROXIMATE ROW2FT ELEVATION CONTOURSWETLANDS ADJACENT TO T3+ STREAMSPVP 50-FT BUFFER PER NHFGEROSION CONTROLSRARE PLANT SURVEY PLOTEXISTING ACCESSEXISTING ACCESSSECONDARY ACCESSRARE PLANT PLOTINVASIVE PLANT PLOT |
|--|--|--|--|

This mapping product has been created to comply with submittal requirements to obtain certain regulatory approvals and, as such, there is no reliance on the information contained herein for any other purpose.

Standard work pad size within White Mountain National Forest is 75-ft x 75-ft. Select work pads are proposed to be 100-ft x 100-ft due to safety concerns during construction.



NO.	DATE	REVISIONS

EVERSOURCE
ENERGY

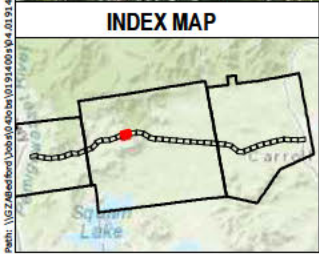
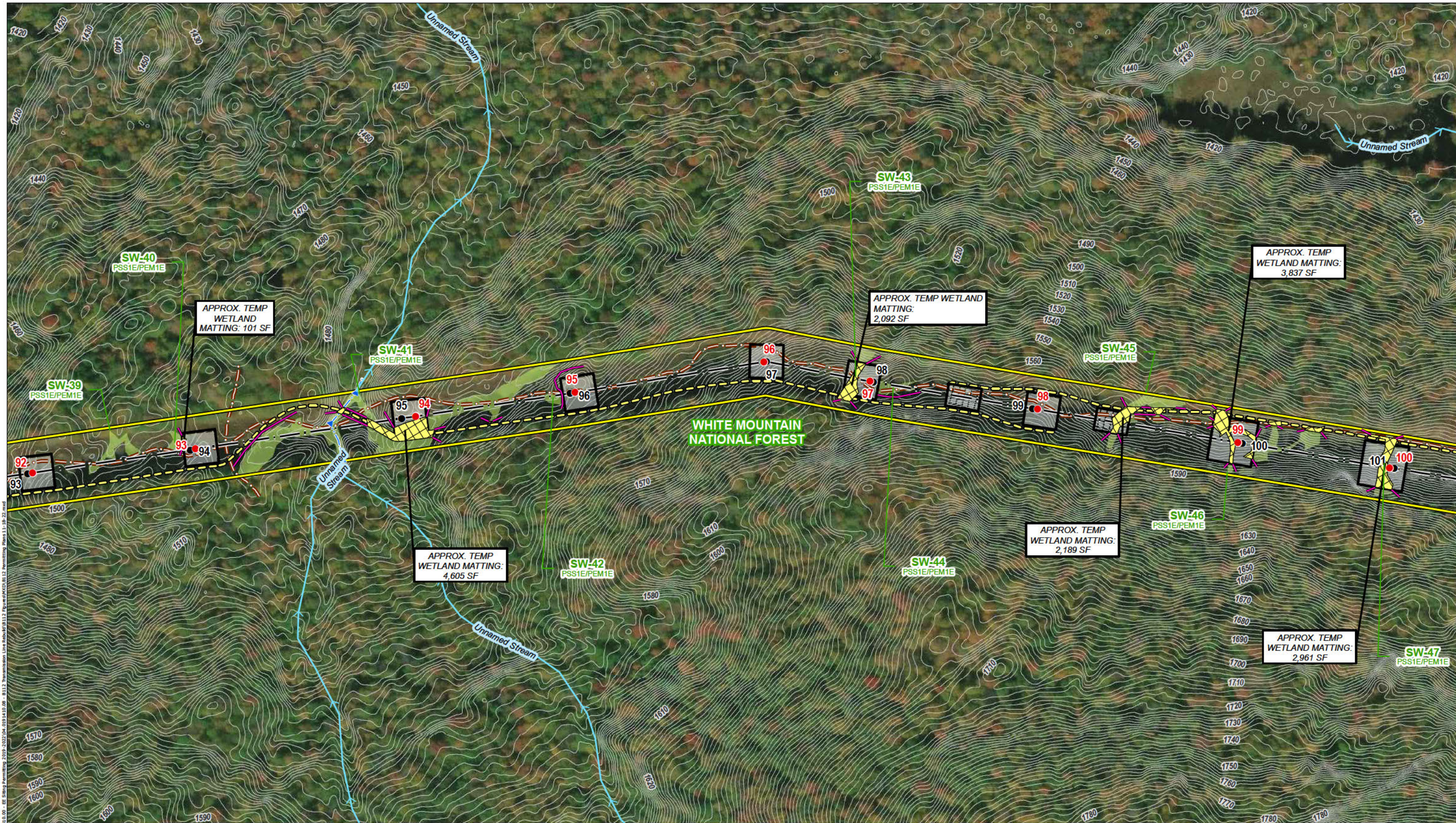
B112 Transmission Line Rebuild Project

Sandwich, NH

MAP SHEET

Date: October, 2023

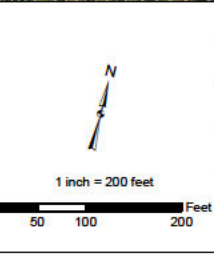
13 OF 41



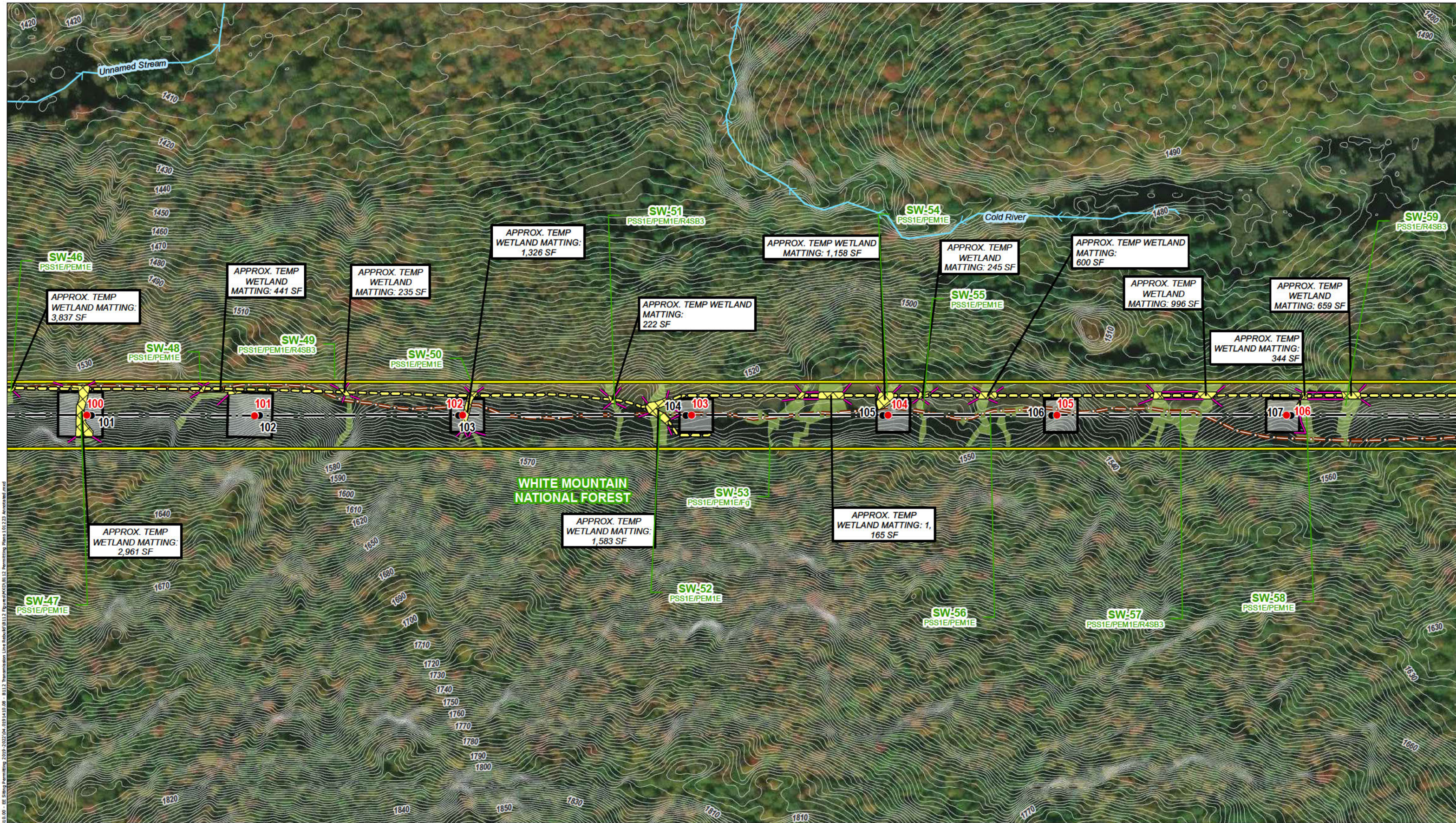
- | | | | |
|--|--|---|---|
| <ul style="list-style-type: none">PROPOSED POLE REPLACEMENTEXISTING STRUCTURESTRUCTURE TO BE REMOVEDTEMPORARY WETLAND IMPACTWINTERING HABITATPARCEL BOUNDARYEVERSOURCE OWNED PARCELSTATE OWNED PARCELWHITE MOUNTAIN NATIONAL FORESTRECREATIONAL TRAILSSTONE WALL | <ul style="list-style-type: none">TOWN MAINTAINEDSTATE MAINTAINEDPRIVATE ROADCLASS 6 TOWN ROADCULVERTB112 TRANSMISSION LINEDISTRIBUTION LINESITE BOUNDARYFENCESTEMPORARY UPLAND MATTINGDELINEATED WETLANDS | <ul style="list-style-type: none">NHD FLOWLINESDELINEATED PERENNIAL STREAMDELINEATED INTERMITTENT STREAMPOTENTIAL VERNAL POOLCONFIRMED VERNAL POOLTOWN BOUNDARYWORK PADPULL PADGATE | <ul style="list-style-type: none">APPROXIMATE ROW2FT ELEVATION CONTOURSWETLANDS ADJACENT TO T3+ STREAMSPVP 50-FT BUFFER PER NHFGEROSION CONTROLSPROPOSED ACCESSEXISTING ACCESSSECONDARY ACCESSRARE PLANT PLOTINVASIVE PLANT PLOT |
|--|--|---|---|

This mapping product has been created to comply with submittal requirements to obtain certain regulatory approvals and, as such, there is no reliance on the information contained herein for any other purpose.

Standard work pad size within White Mountain National Forest is 75-ft x 75-ft. Select work pads are proposed to be 100-ft x 100-ft due to safety concerns during construction.



NO.	DATE	REVISIONS



INDEX MAP

- PROPOSED POLE REPLACEMENT
- EXISTING STRUCTURE
- STRUCTURE TO BE REMOVED
- TEMPORARY WETLAND IMPACT
- WINTERING HABITAT
- PARCEL BOUNDARY
- EVERSOURCE OWNED PARCEL
- STATE OWNED PARCEL
- WHITE MOUNTAIN NATIONAL FOREST
- RECREATIONAL TRAILS
- STONE WALL

- TOWN MAINTAINED
- STATE MAINTAINED
- PRIVATE ROAD
- CLASS 6 TOWN ROAD
- CULVERT
- B112 TRANSMISSION LINE
- DISTRIBUTION LINE
- SITE BOUNDARY
- FENCES
- TEMPORARY UPLAND MATTING
- DELINEATED WETLANDS

- NHD FLOWLINES
- DELINEATED PERENNIAL STREAM
- DELINEATED INTERMITTENT STREAM
- POTENTIAL VERNAL POOL
- CONFIRMED VERNAL POOL
- TOWN BOUNDARY
- WORK PAD
- PULL PAD
- GATE

- APPROXIMATE ROW
- 2FT ELEVATION CONTOURS
- WETLANDS ADJACENT TO T3+ STREAMS
- PVP 50-FT BUFFER PER NHFG
- EROSION CONTROLS
- PROPOSED ACCESS
- EXISTING ACCESS
- SECONDARY ACCESS
- RARE PLANT PLOT
- INVASIVE PLANT PLOT

This mapping product has been created to comply with submittal requirements to obtain certain regulatory approvals and, as such, there is no reliance on the information contained herein for any other purpose.

Standard work pad size within White Mountain National Forest is 75-ft x 75-ft. Select work pads are proposed to be 100-ft x 100-ft due to safety concerns during construction.

NO.	DATE	REVISIONS

EVERSOURCE
ENERGY

B112 Transmission Line Rebuild Project

Sandwich, NH

Date: October, 2023

MAP SHEET

16 OF 41

