

From: Kris pastoriza <krispastoriza@gmail.com>

Sent: Thursday, February 3, 2022 8:06 AM

To: Rennie, Craig <craig.d.ennie2@dn-cr.nh.gov>; Sarah <Sarah.L.Stewart@dn-cr.nh.gov>; Shelley.Winters@dot.nh.gov; Selectmen <Selectmen@townoflittleton.org>; Patrick.Bauer@dot.gov; miguel.ramos@dot.gov

Subject: Incorrect information on DNCR site

Commissioner Stewart and Chief Rennie,

the DNCR site states that the Ammonoosuc Rail Trail, which allows OHRV use, ends at Industrial Park Road. Former Chief Gamache, DNCR employee, also repeatedly stated that Industrial Park Rd. was the end of the Ammonoosuc Rail Trail.

Activities and Amenities

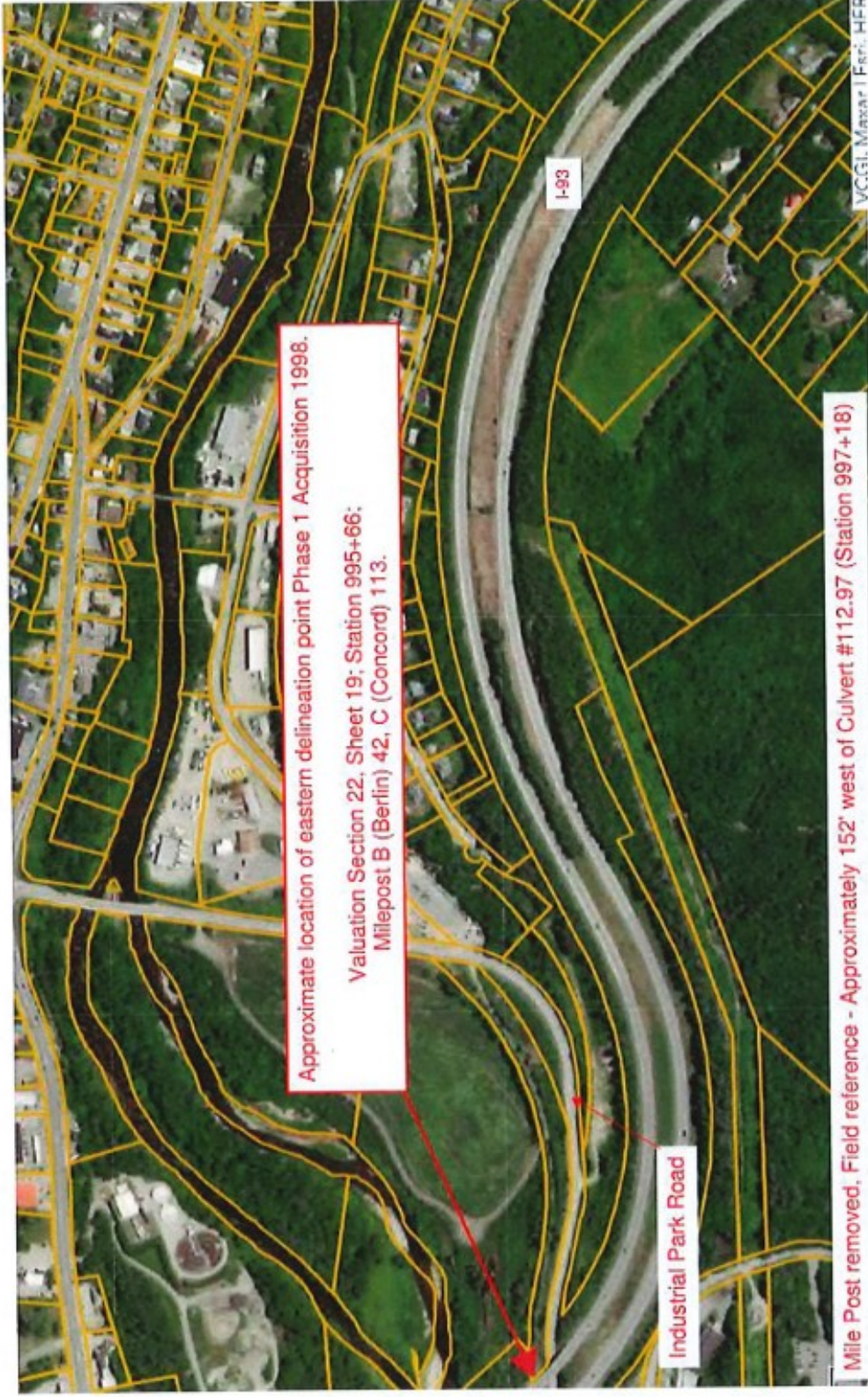


The Ammonoosuc Rail Trail is 19 miles long and goes between Woodsville and Littleton. The Ammonoosuc River provides a gorgeous backdrop to this trail. In Bath, you can see the magnificent 345 foot covered bridge that was built in 1832. The Lisbon Depot is another must see along the trail. The trail starts at Central Street in Woodsville and ends at Industrial Park Road in Littleton.

<https://www.nhstateparks.org/visit/recreational-rail-trails/ammonoosuc-recreational-rail-trail>

The Ammonoosuc Rail Trail (non-TE funded section) does not end at Industrial Park Rd. DNCR has known this since at least 2017. The DNCR site needs to be corrected to state that motorized use of the ART ends at the I-93 underpass, approximately .3 miles west of Industrial Park Rd., and has no access to Industrial Park Rd. and the HammerDown ATV-tour company and their parking lot. The gate at the underpass needs to be closed during ATV season. The rail trail from this point east was TE-funded and does not allow OHRV use.

Kris Pastoriza
Easton, NH



Approximate location of eastern delineation point Phase 1 Acquisition 1998.
Valuation Section 22, Sheet 19; Station 995+66;
Milepost B (Berlin) 42, C (Concord) 113.

Industrial Park Road

I-93

Mile Post removed, Field reference - Approximately 152' west of Culvert #112.97 (Station 997+18)