

10/17/2018 3:07 PM - sulligx - C:\Users\sulligx\AppData\Local\temp\AcPublish_18528\H14143308.dwg - LOCATION MAP 317-318 ES VER: 12/2016

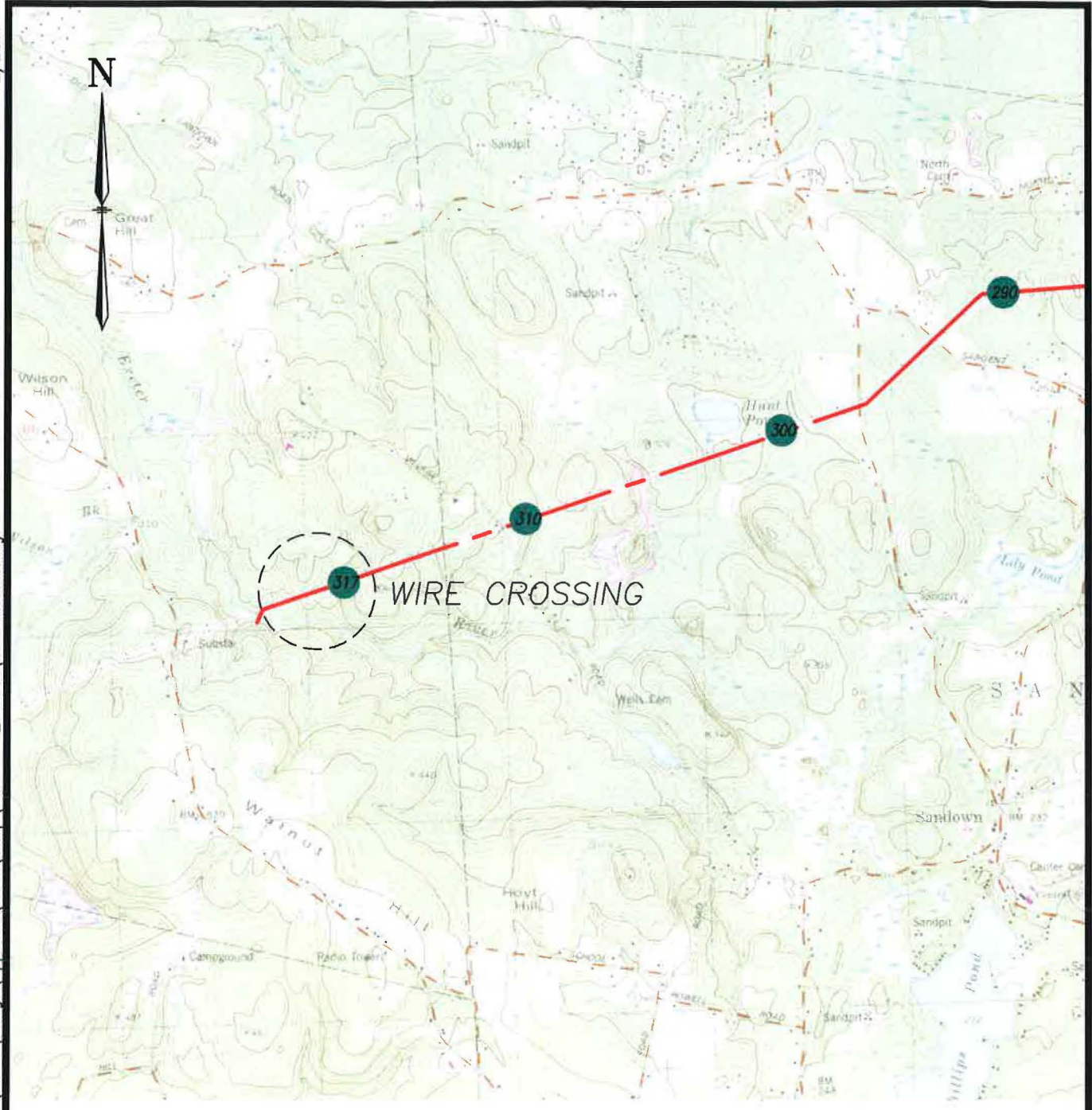


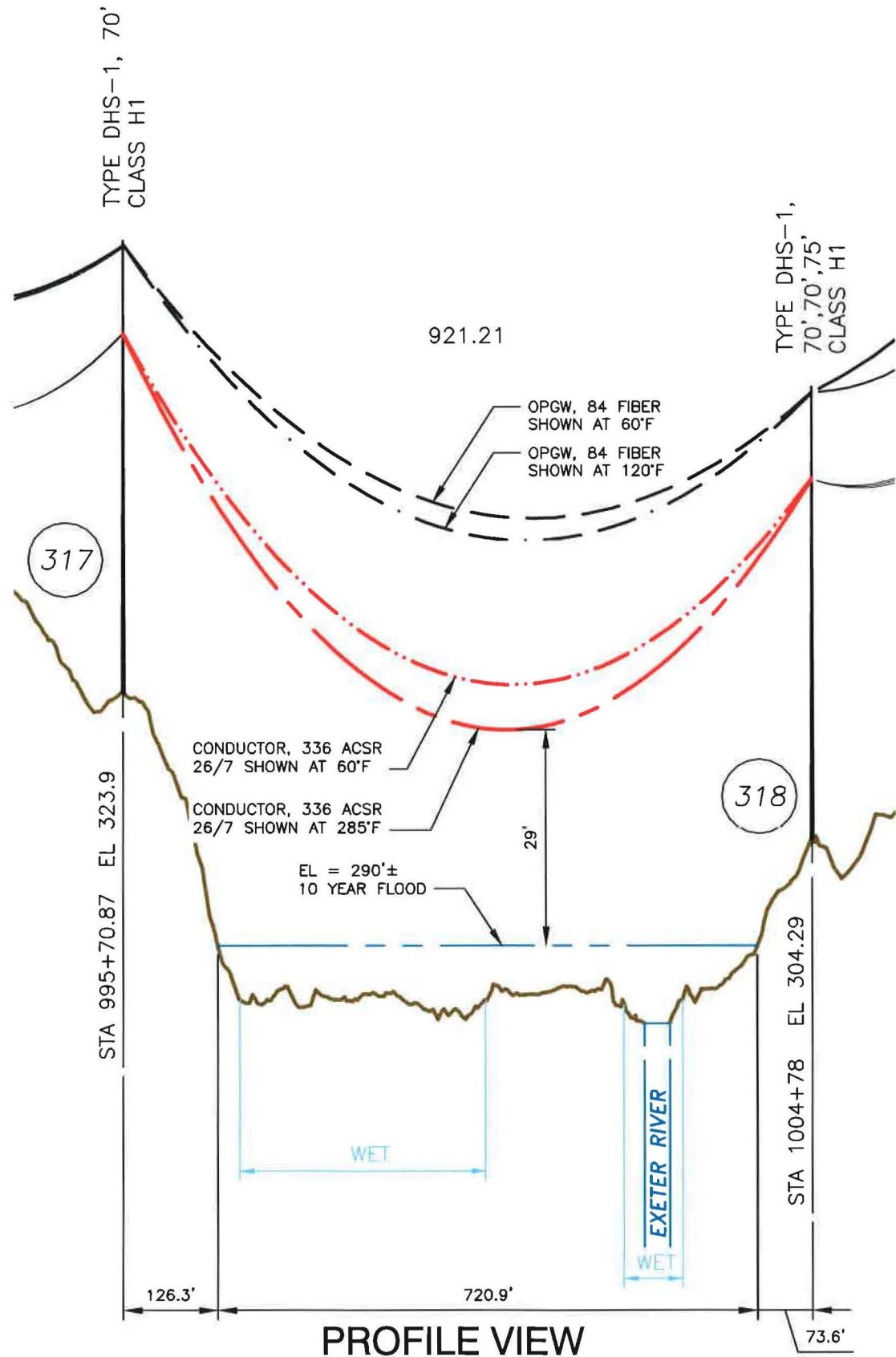
EXHIBIT 1

LEGEND:

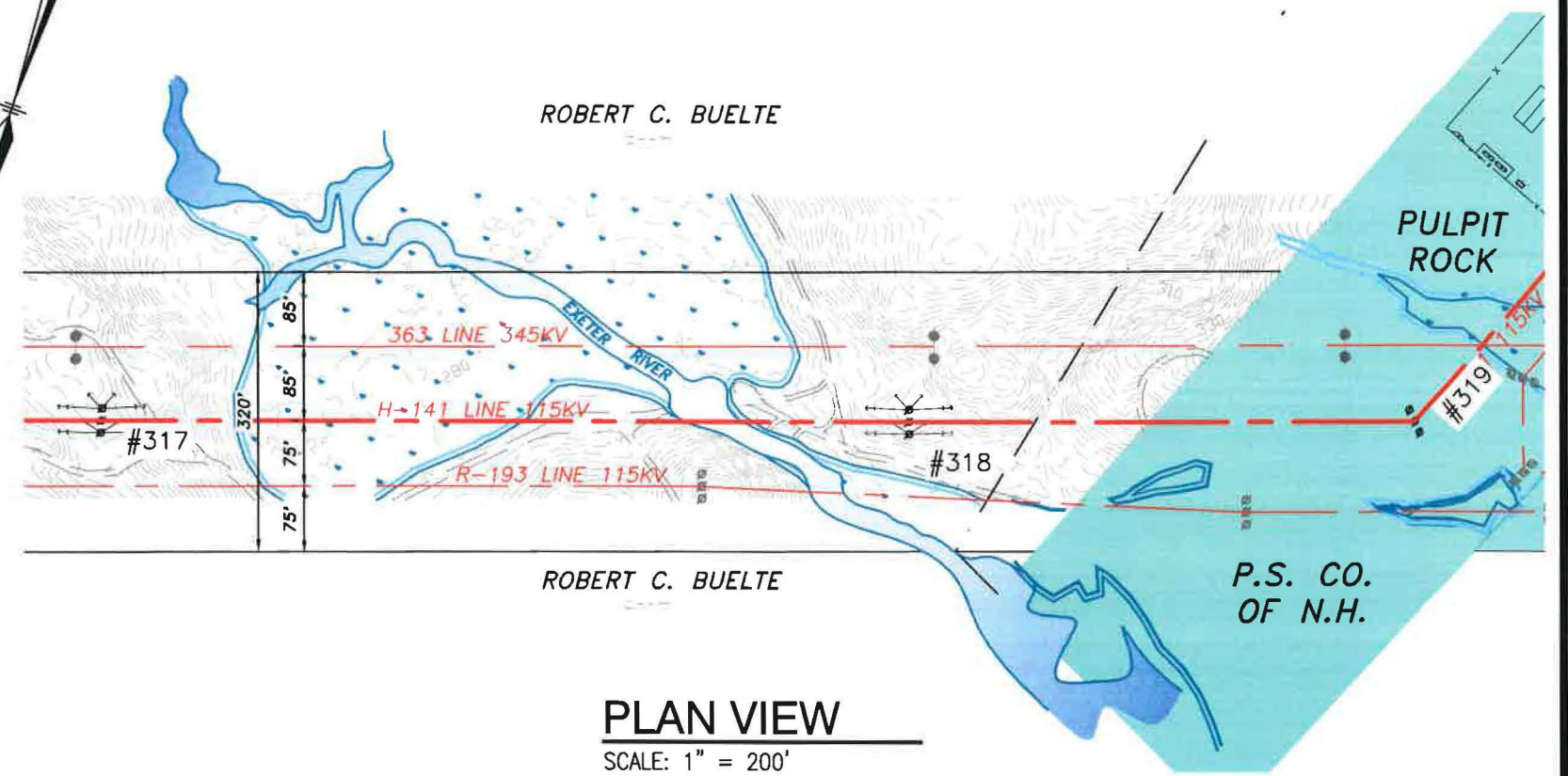
H141 LINE 
 EXISTING H141 STR 

<h1>EVERSOURCE ENERGY</h1>	T 1
	DRAWN GBS
ENGINEER KLM	CHECKED KLM
APPROVED DSD	DATE 10/12/18
LOCATION PLAN H141 115 kV LINE, STR 317 TO 318 EXETER RIVER CHESTER, NEW HAMPSHIRE	
SCALE 1" = 2500'	FILE: H14143308.DWG IMAGE:
DRAWING NO. H14143308	

1	SUBMITTED TO NH PUC	10/18	GBS	JRS	DSD
DWG REV	EPN/DESCRIPTION	CONT/PE#	DATE	DRN	CHKD



PROFILE VIEW
 SCALE: HORZ 1" = 200'
 VERT 1" = 20'



PLAN VIEW
 SCALE: 1" = 200'

- LEGEND:**
- STATIC, OPGW, 84 FIBER
 - — — — — SHOWN AT 60°F
 - — — — — SHOWN AT 120°F
 - 336 ACSR 26/7
 - · — · — · — SHOWN AT 60°F
 - · — · — · — SHOWN AT 285°F
 - EVERSOURCE FEE PROPERTY

- NOTES:**
1. ONLY LOWEST CONDUCTOR PHASE SHOWN FOR CLARITY.
 2. ELEVATIONS REFERENCED TO THE NORTH AMERICAN VERTICAL DATUM OF 1988.

EXHIBIT 2

						T	1
						DRAWN GBS	ENGINEER KLM
H141 115 kV TRANSMISSION LINE BETWEEN STR 317 AND 318 EXETER RIVER CHESTER, NEW HAMPSHIRE						CHECKED KLM	APPROVED DSD
						DATE 10/12/18	
						DRAWING NO. H14143308	
1	SUBMITTED TO NH PUC	10/18	GBS	JRS	DSD	SCALE 1" = 200'	FILE: H14143308.DWG IMAGE:
DWG REV	EPN/DESCRIPTION	CONT/PE#	DATE	DRN	CHKD	APPR	