



LEGEND:

T198 LINE: 
 T198 STR: 

EVERSOURCE ENERGY

T198 115kV LINE
 STATE LAND AND WATERBODY CROSSING, LOCATION PLAN
 SWANZEY/KEENE, NEW HAMPSHIRE
 EXHIBIT 1

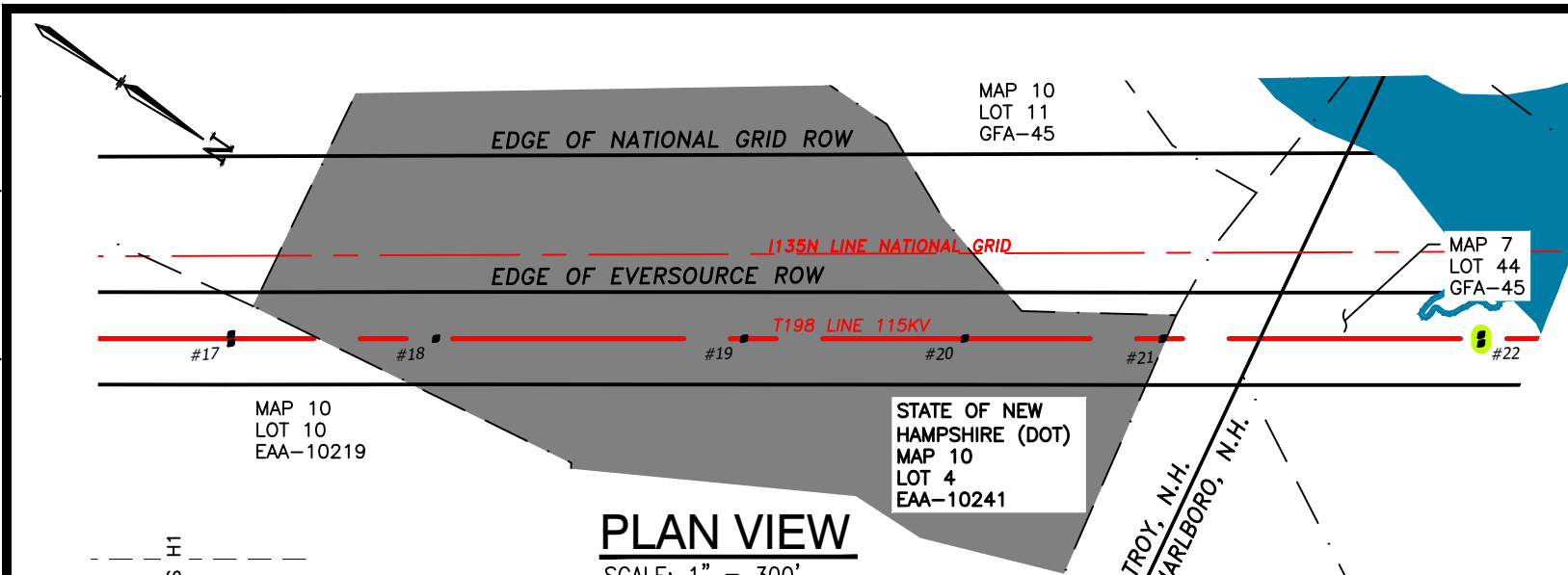
| | |
|-----------------|---|
| T | 1 |
| DRAWN CTS | |
| ENGINEER CJN | |
| CHECKED JRS | |
| APPROVED CJN | |
| DATE 7/25/21 | |

| 1 | SUBMITTED TO PUC WO#T1405A10 | 7/25/21 | CTS | JRS | CJN | |
|---------|------------------------------|----------|------|-----|------|------|
| DWG REV | EPN/DESCRIPTION | CONT/PE# | DATE | DRN | CHKD | APPR |

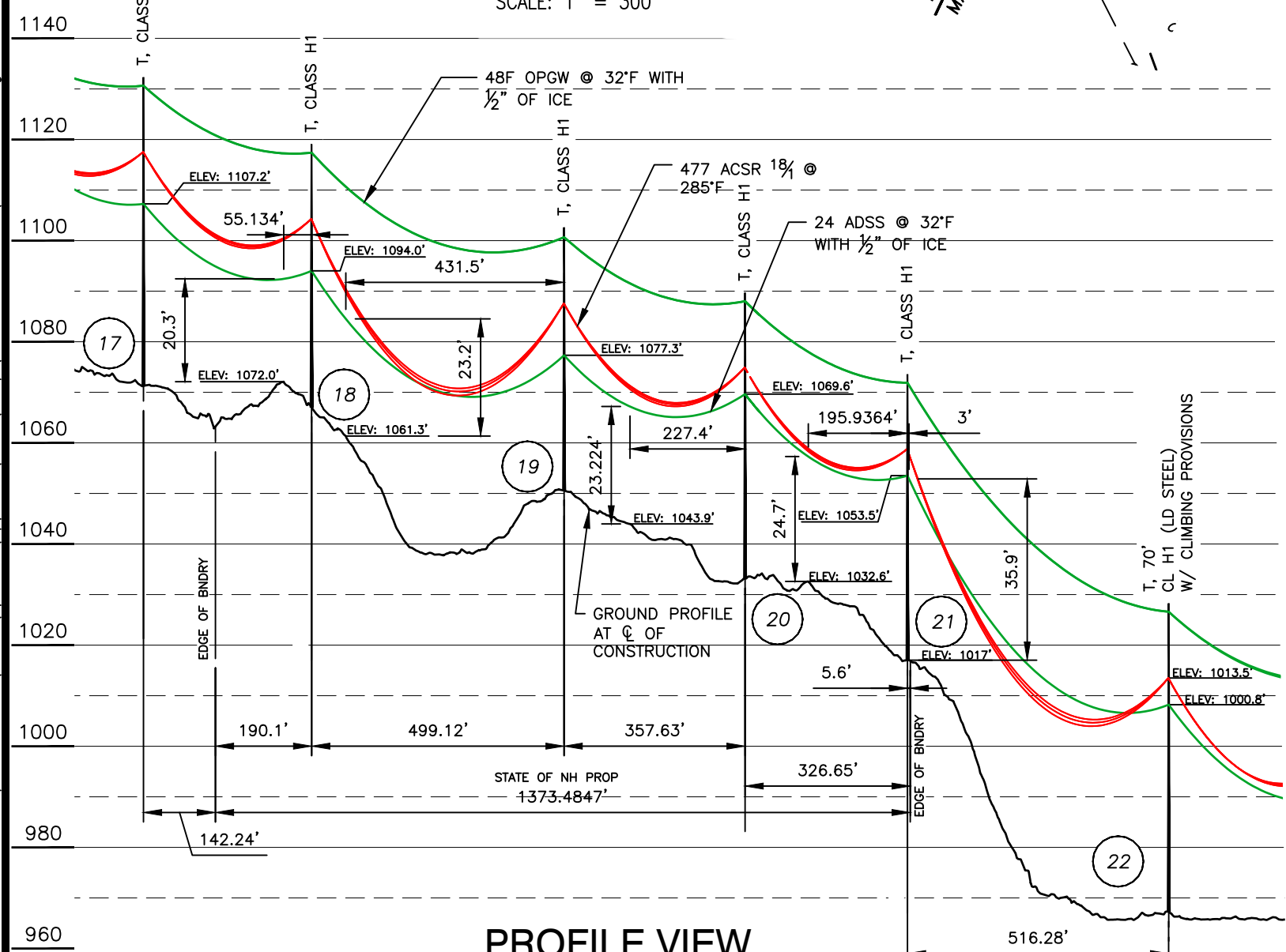
| | |
|---------------------|---------------------|
| SCALE 1" = 1500' | FILE: T19843901.DWG |
| IMAGE: | |

| |
|--------------------------|
| DRAWING NO. T19843901 |
|--------------------------|

11/19/2021 6:09 PM - spensct - C:\Users\spensct\appdata\local\temp\AcPublish_17464\T19843501.dwg - EXHIBIT 2 Str's 17-21 (LAND CROSSINGS) VER: 12/2016



PLAN VIEW
SCALE: 1" = 300'



PROFILE VIEW
SCALE: HORZ 1" = 300'
VERT 1" = 30'

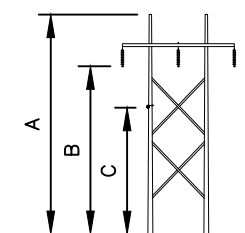
| NESC VERTICAL CLEARANCE (FT) FROM TABLE 232.1 | | |
|--|-------------------|------|
| NATURE OF SURFACE UNDERNEATH WIRES, CONDUCTORS OR CABLES | LINE VOLTAGE (kV) | |
| | NEUTRAL / ADSS | 115 |
| OTHER AREAS TRAVERSED BY VEHICLES SUCH AS CULTIVATED, GRAZING, ORCHARD LANDS, INDUSTRIAL SITES, COMMERCIAL SITES, ETC. | 15.5 | 20.1 |

LEGEND:

- STRUCTURE #17
- STATE OF NEW HAMPSHIRE PROPERTY
- PROPERTY BOUNDARY
- T198 LINE 115KV LINE, C OF CONSTRUCTION
- LIMITS OF EVERSOURCE RIGHT OF WAY

NOTES:

1. PARCEL INFORMATION PROVIDED BY NH GRANIT.
2. ELEVATIONS REFERENCED TO THE NORTH AMERICAN VERTICAL DATUM OF 1988.



STRUCTURES 17-22
T TYPE

STR 17-21: ARE EVERSOURCE TANGENT, SINGLE CIRCUIT H-FRAME, HORIZONTAL CONFIG., GUYED.

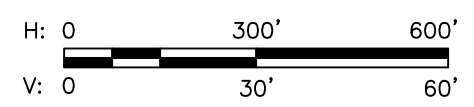
STRUCTURE DETAIL

SCALE: NTS

| STRUCTURE DETAILS | | | | | |
|-------------------|------|----------|------|------|------|
| STRUCTURE | TYPE | MATERIAL | A | B | C |
| 17 | T | STEEL | 61 | 46.3 | 36 |
| 18 | T | STEEL | 52 | 37.3 | 27 |
| 19 | T | STEEL | 52 | 37.3 | 26.7 |
| 20 | T | STEEL | 56.5 | 41.8 | 36.5 |
| 21 | T | STEEL | 56.5 | 41.8 | 36.5 |
| 22 | T | STEEL | 61 | 46.3 | 41 |

| CABLE SCHEDULE | | | | | | |
|----------------|---------------|-------------------------------|-------------------------|-----------|----------|------------|
| WIRE | QTY OF CABLES | DESCRIPTION | DESIGN CONDITIONS | | | |
| | | | MAX DESIGN TENSION (lb) | TEMP (°F) | ICE (in) | WIND (psf) |
| CONDUCTOR | 3 | ACSR, 477 kcmil 18/1, PELICAN | 3800 | 0 | 0.5 | 4 |
| OPGW | 2 | 48F Ø0.646" OPGW | 5500 | 0 | 0.5 | 4 |
| ADSS | 1 | 24 ADSS | 2250 | 0 | 0.5 | 4 |

| STRUCTURE LOCATION | | |
|--------------------|--------------|-------------|
| STRUCTURE | LONGITUDE | LATITUDE |
| 17 | -72.1756879 | 42.84490035 |
| 18 | -72.1763962 | 42.84564851 |
| 19 | -72.17746006 | 42.84677218 |
| 20 | -72.17822237 | 42.84757731 |
| 21 | -72.17890678 | 42.84830007 |
| 22 | -72.1800074 | 42.8494623 |

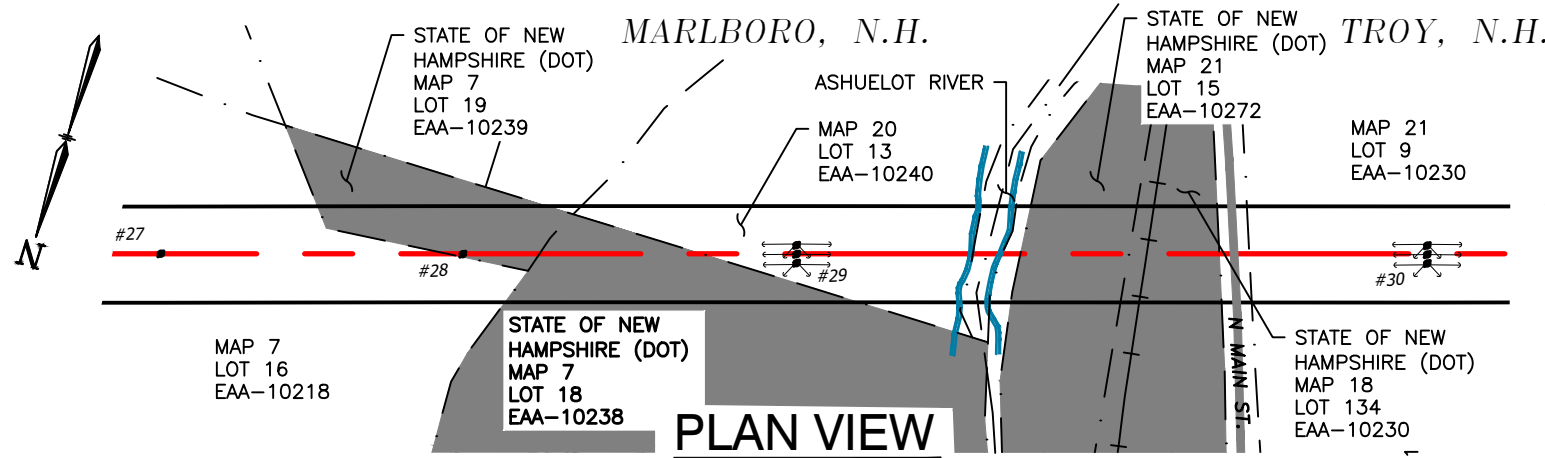


**T198, 115kV LINE
STATE OWNED LAND CROSSING
TROY, NEW HAMPSHIRE
EXHIBIT 2**

| | |
|-----------------|--------------------------|
| T 1 | 1 |
| DRAWN CTS | DATE 7/25/2021 |
| ENGINEER CJN | APPROVED CJN |
| CHECKED JRS | DRAWING NO. T19843501 |

| DWG REV | DESCRIPTION | DATE | DRN | CHKD | APPR |
|---------|------------------------------|---------|-----|------|------|
| 1 | SUBMITTED TO PUC WO#T1405A10 | 7/25/21 | CTS | JRS | CJN |

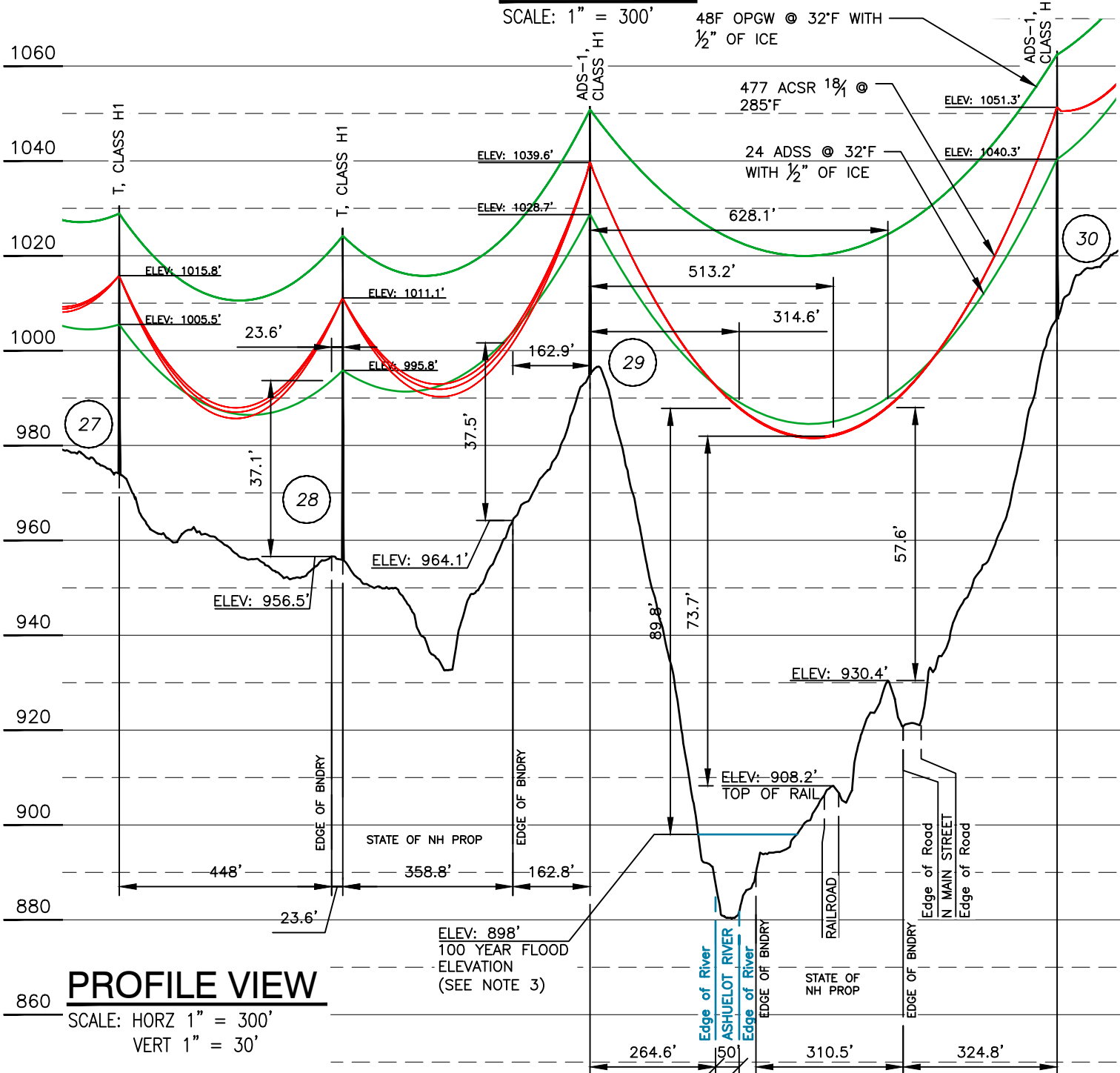
11/19/2021 6:09 PM - spensct - C:\Users\spensct\appdata\local\temp\AcPublish_17464\T19843501.dwg - EXHIBIT 3 Str's 27-30 (LAND CROSSINGS) VER: 12/2016



| NESV VERTICAL CLEARANCE (FT) FROM TABLE 232.1 | | |
|--|-------------------|------|
| NATURE OF SURFACE UNDERNEATH WIRES, CONDUCTORS OR CABLES | LINE VOLTAGE (kv) | |
| | NEUTRAL / ADSS | 115 |
| TOP OF TRACK RAIL | 23.5 | 28.1 |
| OTHER AREAS TRAVERSED BY VEHICLES SUCH AS CULTIVATED, GRAZING, ORCHARD LANDS, INDUSTRIAL SITES, COMMERCIAL SITES, ETC. | 15.5 | 20.1 |
| WATER AREAS NOT SUITABLE FOR SAIL BOATING OR WHERE SAIL BOATING IS PROHIBITED | 14 | 18.6 |

LEGEND:

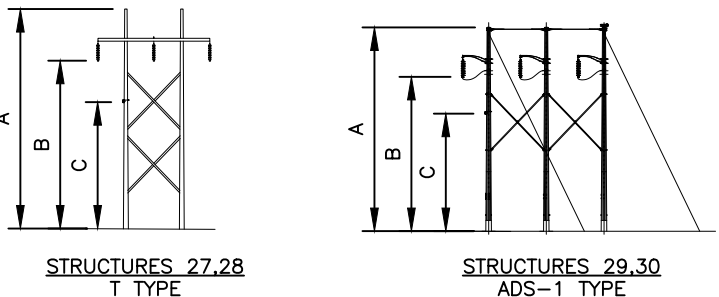
- STRUCTURE (WITH GUYS)
- STATE OF NEW HAMPSHIRE PROPERTY
- PROPERTY BOUNDARY
- T198 LINE 115KV LINE, C OF CONSTRUCTION
- LIMITS OF EVERSOURCE RIGHT OF WAY
- RAILROAD
- LIMITS OF PUBLIC WATER BODY



| CABLE SCHEDULE | | | | | | |
|----------------|---------------|-------------------------------|-------------------------|-----------|----------|------------|
| WIRE | QTY OF CABLES | DESCRIPTION | DESIGN CONDITIONS | | | |
| | | | MAX DESIGN TENSION (lb) | TEMP (°F) | ICE (in) | WIND (psf) |
| CONDUCTOR | 3 | ACSR, 477 kcmil 18/1, PELICAN | 3800 | 0 | 0.5 | 4 |
| OPGW | 2 | 48F Ø0.646" OPGW | 5500 | 0 | 0.5 | 4 |
| ADSS | 1 | 24 ADSS | 2250 | 0 | 0.5 | 4 |

NOTES:

1. PARCEL INFORMATION PROVIDED BY NH GRANIT.
2. ELEVATIONS REFERENCED TO THE NORTH AMERICAN VERTICAL DATUM OF 1988.
3. THE 100 YEAR FLOOD ELEVATION FROM THE FEMA FLOOD MAP SERVICE CENTER, NATIONAL FLOOD HAZARD LAYER FIRMETTE, 5/23/2006 IS A ZONA A. THE ELEVATION WAS DEVELOPED THROUGH CONTOUR INTERPOLATION AS DEFINED IN THE FEMA APPROXIMATE ZONE A AREAS, A GUIDE FOR OBTAINING AND DEVELOPING BASE (100 YEAR) FLOOD ELEVATIONS.



STR'S 27,28: ARE EVERSOURCE TANGENT, SINGLE CIRCUIT H-FRAME, HORIZONTAL CONFIG.
STR'S 29,30: ARE EVERSOURCE ANGLED DEADEND, SINGLE CIRCUIT ADS-1, HORIZONTAL CONFIG., GUYED.

STRUCTURE DETAIL

SCALE: NTS

| STRUCTURE DETAILS | | | | | |
|-------------------|-------|----------|------|------|------|
| STRUCTURE | TYPE | MATERIAL | A | B | C |
| 27 | T | STEEL | 56.5 | 41.8 | 31.5 |
| 28 | T | STEEL | 70 | 55.3 | 40 |
| 29 | ADS-1 | STEEL | 56.5 | 44.6 | 33.7 |
| 30 | ADS-1 | STEEL | 56.5 | 44.6 | 33.7 |

| STRUCTURE LOCATION | | |
|--------------------|--------------|-------------|
| STRUCTURE | LONGITUDE | LATITUDE |
| 27 | -72.18552311 | 42.84922174 |
| 28 | -72.18719763 | 42.84882679 |
| 29 | -72.18904982 | 42.84838991 |
| 30 | -72.19254962 | 42.84756771 |



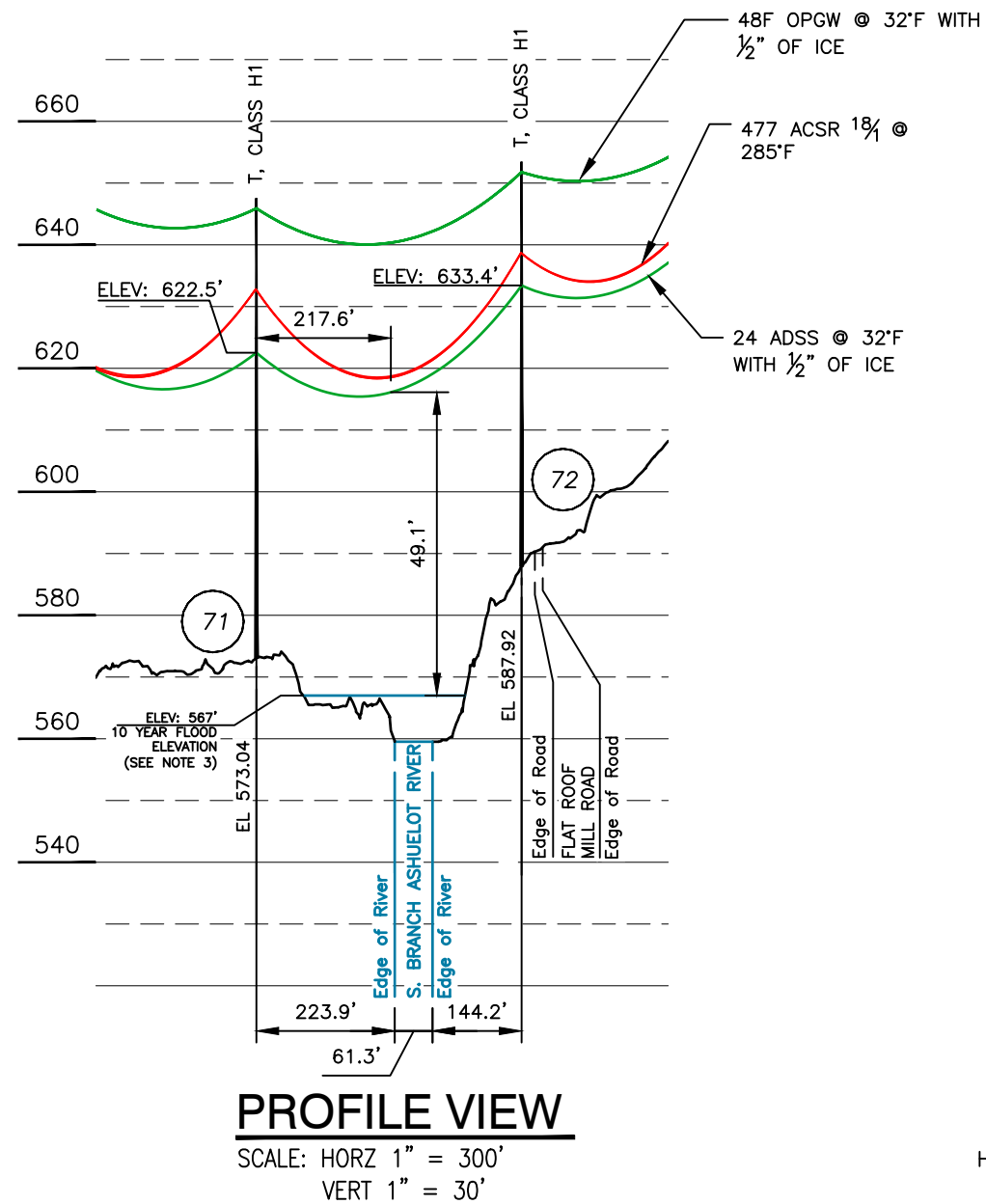
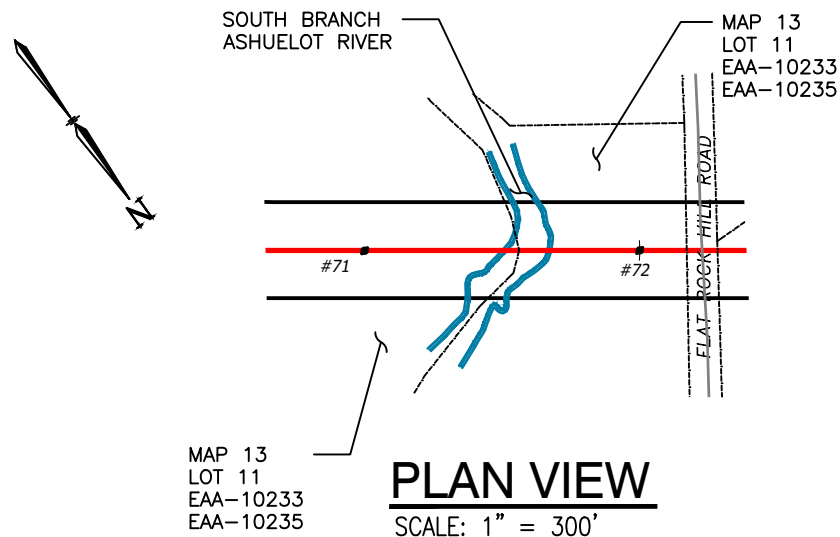
EVERSOURCE ENERGY

T198, 115kV LINE
STATE OWNED LAND/ASHUELOT RIVER CROSSING
TROY/MARLBOROUGH, NEW HAMPSHIRE
EXHIBIT 3

| | | |
|----------------|---------------------|-----------------------|
| SCALE AS SHOWN | FILE: T19843501.DWG | DRAWING NO. T19843501 |
|----------------|---------------------|-----------------------|

| DWG REV | EPN/DESCRIPTION | CONT/PE# | DATE | DRN | CHKD | APPR |
|---------|------------------------------|----------|---------|-----|------|------|
| 1 | SUBMITTED TO PUC WO#T1405A10 | | 7/25/21 | CTS | JRS | CJN |

11/22/2021 7:50 AM - spensct - C:\Users\spensct\appdata\local\temp\AcPublish_17464\T19843901.dwg - EXHIBIT 4 Str's 71-72 (WATER CROSSING) VER: 12/2016

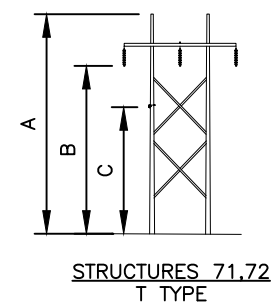


| CABLE SCHEDULE | | | | | | |
|----------------|---------------|-------------------------------|-------------------------|-----------|----------|------------|
| WIRE | QTY OF CABLES | DESCRIPTION | DESIGN CONDITIONS | | | |
| | | | MAX DESIGN TENSION (lb) | TEMP (°F) | ICE (in) | WIND (psf) |
| CONDUCTOR | 3 | ACSR, 477 kcmil 18/1, PELICAN | 4000 | 0 | 0.5 | 4 |
| OPGW | 2 | 48F Ø0.646" OPGW | 5500 | 0 | 0.5 | 4 |
| ADSS | 1 | 24 ADSS | 2250 | 0 | 0.5 | 4 |

- LEGEND:**
- #71 STRUCTURE
 - PROPERTY BOUNDARY
 - T198 LINE 115KV** LINE, ☉ OF CONSTRUCTION
 - LIMITS OF EVERSOURCE RIGHT OF WAY
 - LIMITS OF PUBLIC WATERBODY

| STRUCTURE LOCATION | | |
|--------------------|--------------|-------------|
| STRUCTURE | LONGITUDE | LATITUDE |
| 71 | -72.24469992 | 42.86063044 |
| 72 | -72.24594505 | 42.86128082 |

| NEC VERTICAL CLEARANCE (FT) FROM TABLE 232.1 | | |
|---|-------------------|------|
| NATURE OF SURFACE UNDERNEATH WIRES, CONDUCTORS OR CABLES | LINE VOLTAGE (kV) | |
| | NEUTRAL / ADSS | 115 |
| WATER AREAS NOT SUITABLE FOR SAIL BOATING OR WHERE SAIL BOATING IS PROHIBITED | 14 | 18.6 |

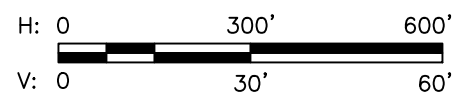


STR'S 71,72: ARE EVERSOURCE TANGENT, SINGLE CIRCUIT H-FRAME, HORIZONTAL CONFIG.

STRUCTURE DETAIL
SCALE: NTS

| STRUCTURE DETAILS | | | | | |
|-------------------|------|----------|------|------|------|
| STRUCTURE | TYPE | MATERIAL | A | B | C |
| 71 | T | STEEL | 74.5 | 59.8 | 49.5 |
| 72 | T | STEEL | 65.5 | 50.8 | 45.5 |

- NOTES:**
- PARCEL INFORMATION PROVIDED BY NH GRANIT.
 - ELEVATIONS REFERENCED TO THE NORTH AMERICAN VERTICAL DATUM OF 1988.
 - THE 10 YEAR FLOOD ELEVATION FROM THE FEMA FLOOD INSURANCE STUDY REPORT #33005CV002A (5/23/2006)



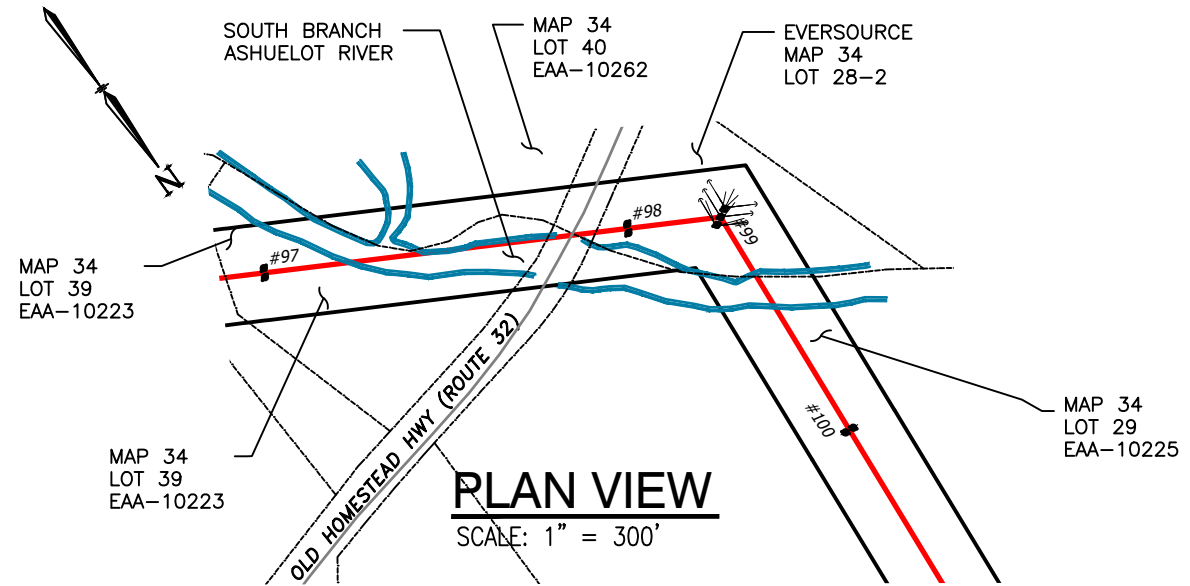
| DWG REV | EPN/DESCRIPTION | CONT/PE# | DATE | DRN | CHKD | APPR |
|---------|------------------------------|----------|---------|-----|------|------|
| 1 | SUBMITTED TO PUC WO#T1405A10 | | 7/25/21 | CTS | JRS | CJN |

EVERSOURCE ENERGY

T198, 115kV LINE
SOUTH BRANCH ASHUELOT RIVER CROSSING
SWANZEY, NEW HAMPSHIRE
EXHIBIT 4

| | |
|-------------------|---------------------------------|
| SCALE AS SHOWN | DRAWING NO. T19843901 |
|-------------------|---------------------------------|

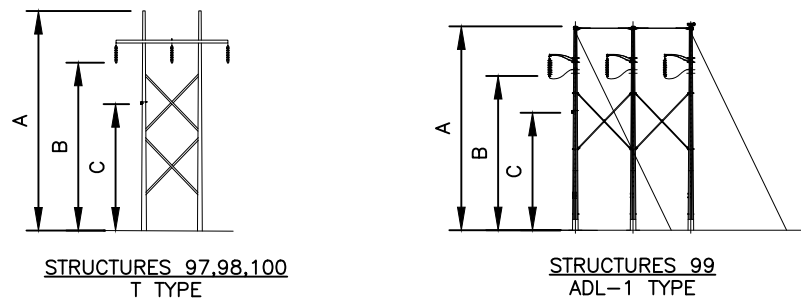
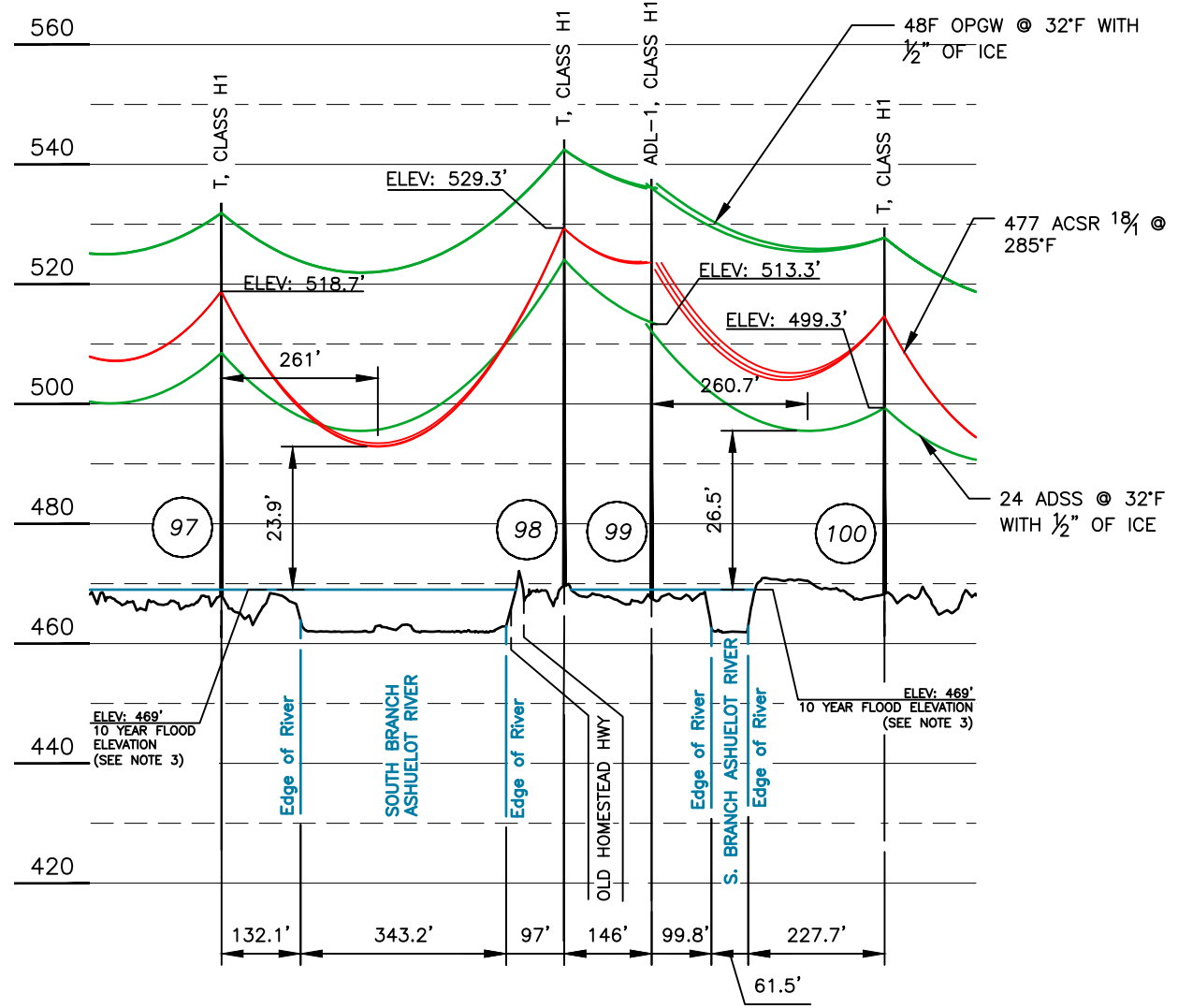
11/22/2021 7:50 AM - spensct - C:\Users\spensct\appdata\local\temp\AcPublish_17464\T19843901.dwg - EXHIBIT 5 Str's 97-100 (WATER CROSSING) 12/2016



| CABLE SCHEDULE | | | | | | |
|----------------|---------------|-------------------------------|-------------------------|-----------|----------|------------|
| WIRE | QTY OF CABLES | DESCRIPTION | DESIGN CONDITIONS | | | |
| | | | MAX DESIGN TENSION (lb) | TEMP (°F) | ICE (in) | WIND (psf) |
| CONDUCTOR | 3 | ACSR, 477 kcmil 18/1, PELICAN | 4000 | 0 | 0.5 | 4 |
| OPGW | 2 | 48F Ø0.646" OPGW | 5500 | 0 | 0.5 | 4 |
| ADSS | 1 | 24 ADSS | 2250 | 0 | 0.5 | 4 |

- LEGEND:**
- #97 STRUCTURE (WITH GUYS)
 - PROPERTY BOUNDARY
 - T198 LINE 115KV LINE, ☉ OF CONSTRUCTION
 - LIMITS OF EVERSOURCE RIGHT OF WAY
 - LIMITS OF PUBLIC WATERBODY

| STRUCTURE LOCATION | | |
|--------------------|--------------|-------------|
| STRUCTURE | LONGITUDE | LATITUDE |
| 97 | -72.27578701 | 42.87554833 |
| 98 | -72.2776653 | 42.87629472 |
| 99 | -72.27814581 | 42.87648456 |
| 100 | -72.2780395 | 42.87754961 |



STR'S 97,98,100: ARE EVERSOURCE TANGENT, SINGLE CIRCUIT H-FRAME, HORIZONTAL CONFIG.
 STR 99: IS AN EVERSOURCE ANGLED DEADEND, SINGLE CIRCUIT ADL-1, HORIZONTAL CONFIG., GUYED.

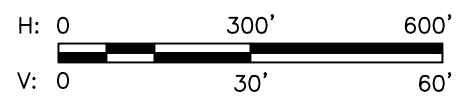
STRUCTURE DETAIL
SCALE: NTS

| STRUCTURE DETAILS | | | | | |
|-------------------|-------|----------|------|------|------|
| STRUCTURE | TYPE | MATERIAL | A | B | C |
| 97 | T | STEEL | 65.5 | 50.8 | 40.5 |
| 98 | T | STEEL | 74.5 | 59.8 | 54.5 |
| 99 | ADL-1 | STEEL | 70 | 57 | 45.8 |
| 100 | T | STEEL | 61 | 46.3 | 31 |

| NESV VERTICAL CLEARANCE (FT) FROM TABLE 232.1 | | |
|---|-------------------|------|
| NATURE OF SURFACE UNDERNEATH WIRES, CONDUCTORS OR CABLES | LINE VOLTAGE (kV) | |
| | NEUTRAL / ADSS | 115 |
| WATER AREAS NOT SUITABLE FOR SAIL BOATING OR WHERE SAIL BOATING IS PROHIBITED | 14 | 18.6 |

- NOTES:**
1. PARCEL INFORMATION PROVIDED BY NH GRANIT.
 2. ELEVATIONS REFERENCED TO THE NORTH AMERICAN VERTICAL DATUM OF 1988.
 3. THE 10 YEAR FLOOD ELEVATION FROM THE FEMA FLOOD INSURANCE STUDY REPORT #33005CV002A (5/23/2006)

PROFILE VIEW
SCALE: HORZ 1" = 300'
VERT 1" = 30'



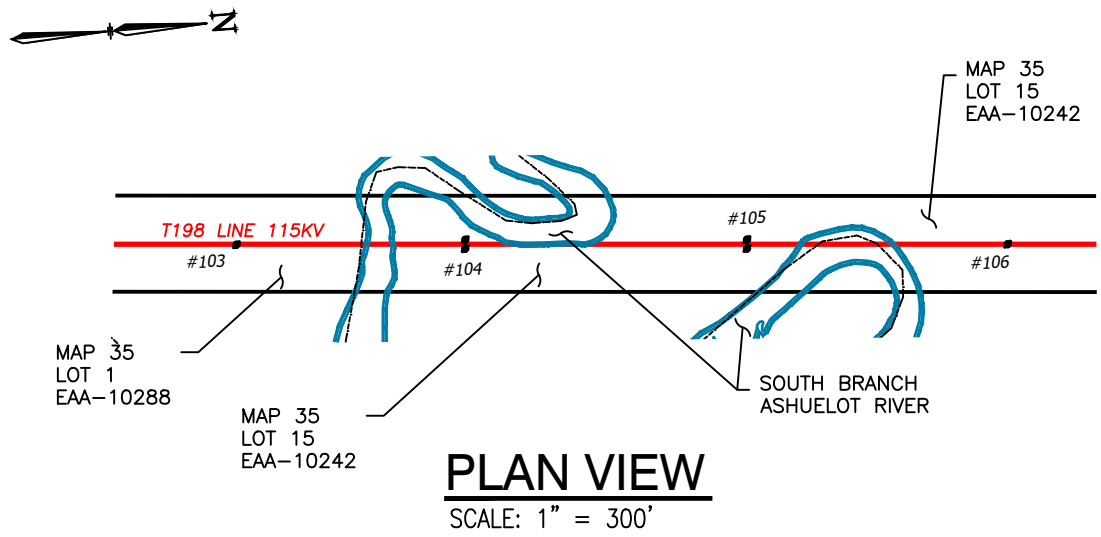
EVSOURCE ENERGY

T198, 115kV LINE
SOUTH BRANCH ASHUELOT RIVER CROSSING
SWANZEY, NEW HAMPSHIRE
EXHIBIT 5

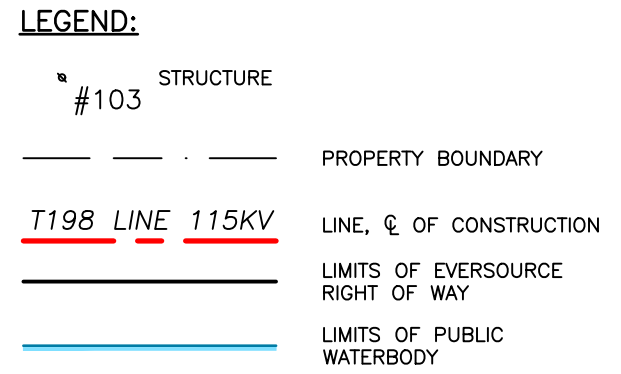
| | |
|-----------------|-------------------|
| DRAWN CTS | T 1 |
| ENGINEER CJN | CHECKED JRS |
| APPROVED CJN | DATE 7/25/2021 |

| DWG REV | EPN/DESCRIPTION | CONT/PE# | DATE | DRN | CHKD | APPR |
|---------|------------------------------|----------|---------|-----|------|------|
| 1 | SUBMITTED TO PUC WO#T1405A10 | | 7/25/21 | CTS | JRS | CJN |

11/22/2021 7:50 AM - spensct - C:\Users\spensct\appdata\local\temp\AcPublish_17464\T198+3901.dwg - EXHIBIT 6 Str's 103-106 (WATER CROSSING) 12/2016

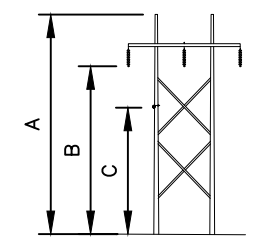
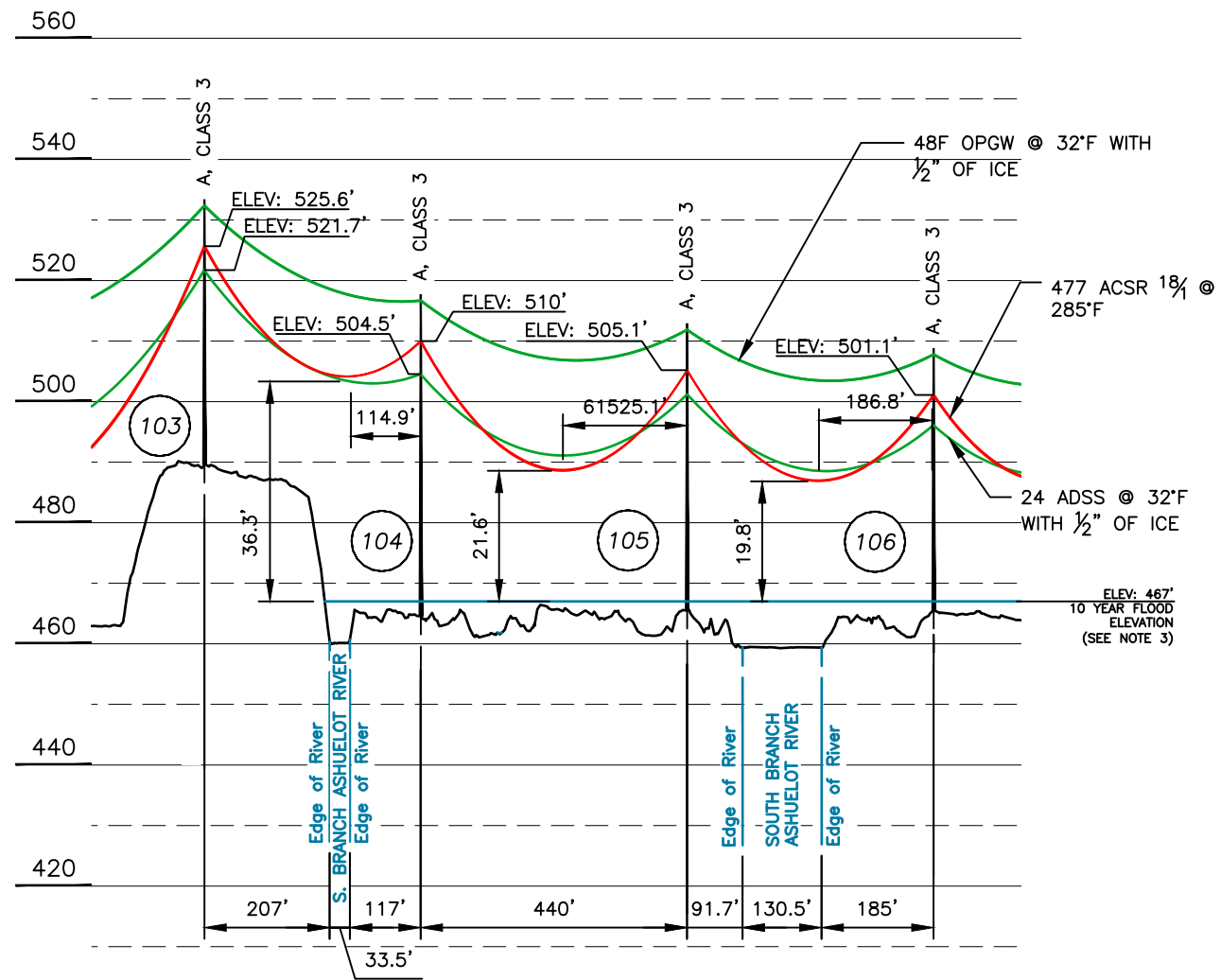


| CABLE SCHEDULE | | | | | | |
|----------------|---------------|-------------------------------|-------------------------|-----------|----------|------------|
| WIRE | QTY OF CABLES | DESCRIPTION | DESIGN CONDITIONS | | | |
| | | | MAX DESIGN TENSION (lb) | TEMP (°F) | ICE (in) | WIND (psf) |
| CONDUCTOR | 3 | ACSR, 477 kcmil 18/1, PELICAN | 4000 | 0 | 0.5 | 4 |
| OPGW | 2 | 48F Ø0.646" OPGW | 5500 | 0 | 0.5 | 4 |
| ADSS | 1 | 24 ADSS | 2250 | 0 | 0.5 | 4 |



| STRUCTURE LOCATION | | |
|--------------------|--------------|-------------|
| STRUCTURE | LONGITUDE | LATITUDE |
| 103 | -72.2776687 | 42.88128212 |
| 104 | -72.27757504 | 42.88226049 |
| 105 | -72.27745725 | 42.88346457 |
| 106 | -72.27734644 | 42.88457885 |

| NESV VERTICAL CLEARANCE (FT) FROM TABLE 232.1 | | |
|---|-------------------|------|
| NATURE OF SURFACE UNDERNEATH WIRES, CONDUCTORS OR CABLES | LINE VOLTAGE (kV) | |
| | NEUTRAL / ADSS | 115 |
| WATER AREAS NOT SUITABLE FOR SAIL BOATING OR WHERE SAIL BOATING IS PROHIBITED | 14 | 18.6 |

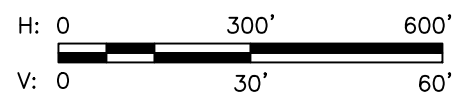


STR'S 103,104,105,106: ARE EVERSOURCE TANGENT, SINGLE CIRCUIT H-FRAME, HORIZONTAL CONFIG.

STRUCTURE DETAIL
SCALE: NTS

| STRUCTURE DETAILS | | | | | |
|-------------------|------|----------|------|------|------|
| STRUCTURE | TYPE | MATERIAL | A | B | C |
| 103 | A | WOOD | 43.6 | 36 | 32.1 |
| 104 | A | WOOD | 53.1 | 45.4 | 40 |
| 105 | A | WOOD | 47.3 | 39.7 | 35.7 |
| 106 | A | WOOD | 43.2 | 35.6 | 30.6 |

- NOTES:**
1. PARCEL INFORMATION PROVIDED BY NH GRANIT.
 2. ELEVATIONS REFERENCED TO THE NORTH AMERICAN VERTICAL DATUM OF 1988.
 3. THE 10 YEAR FLOOD ELEVATION FROM THE FEMA FLOOD INSURANCE STUDY REPORT #33005CV002A (5/23/2006)



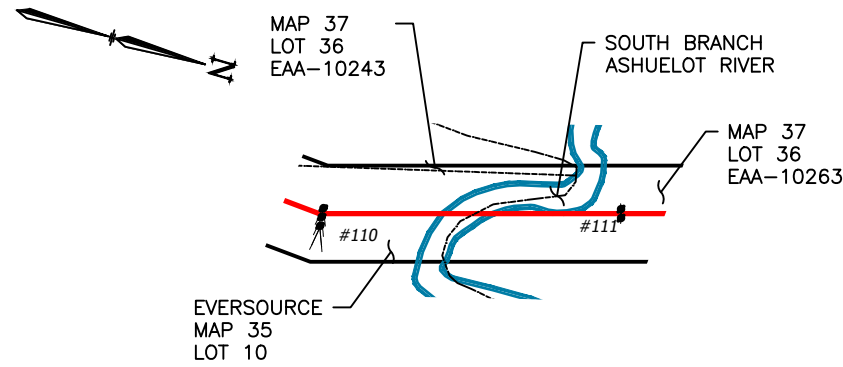
EVERSOURCE ENERGY

T198, 115kV LINE
SOUTH BRANCH ASHUELOT RIVER CROSSING
SWANZEY, NEW HAMPSHIRE
EXHIBIT 6

| | | |
|-------------------|-------------------------------|---------------------------------|
| SCALE AS SHOWN | FILE: T19843901.DWG IMAGE: | DRAWING NO. T19843901 |
|-------------------|-------------------------------|---------------------------------|

| DWG REV | EPN/DESCRIPTION | CONT/PE# | DATE | DRN | CHKD | APPR |
|---------|------------------------------|----------|---------|-----|------|------|
| 1 | SUBMITTED TO PUC WO#T1405A10 | | 7/25/21 | CTS | JRS | CJN |

11/22/2021 7:50 AM - spensct - C:\Users\spensct\appdata\local\temp\AcPublish_17464\T19843901.dwg - EXHIBIT 7 Str's 110-111 (WATER CROSSING) 12/2016



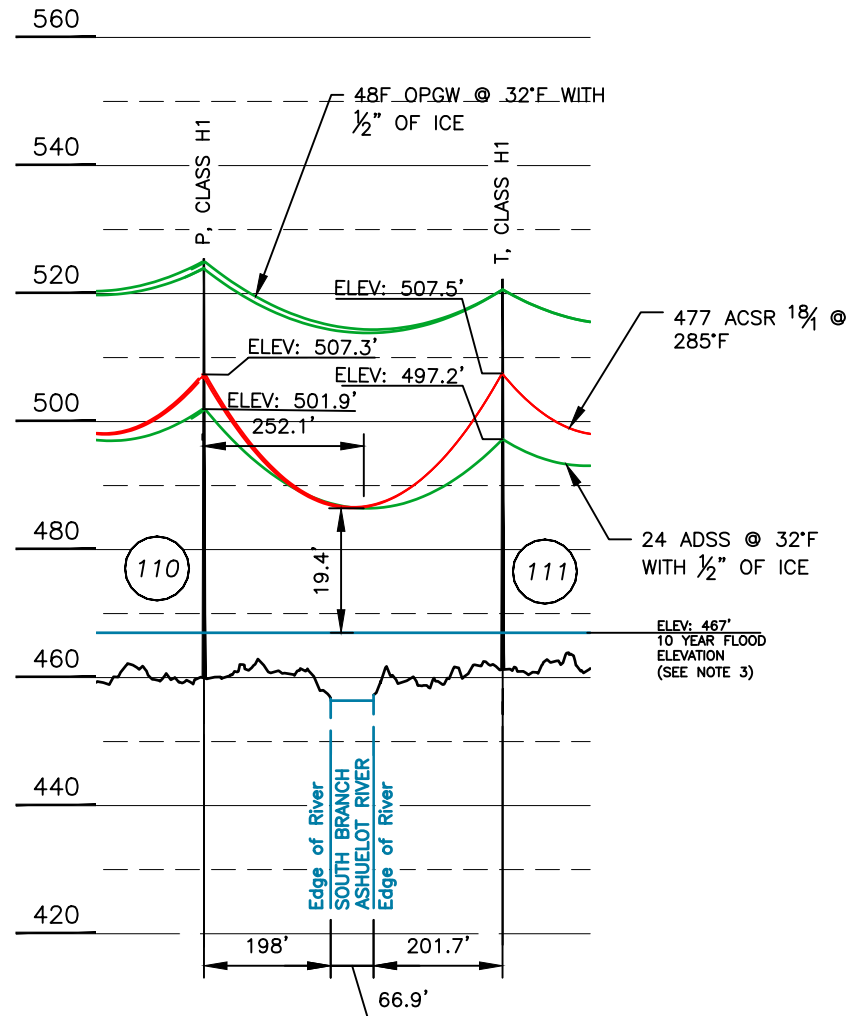
PLAN VIEW
SCALE: 1" = 300'

| CABLE SCHEDULE | | | | | | |
|----------------|---------------|-------------------------------|-------------------------|-----------|----------|------------|
| WIRE | QTY OF CABLES | DESCRIPTION | DESIGN CONDITIONS | | | |
| | | | MAX DESIGN TENSION (lb) | TEMP (°F) | ICE (in) | WIND (psf) |
| CONDUCTOR | 3 | ACSR, 477 kcmil 18/1, PELICAN | 4000 | 0 | 0.5 | 4 |
| OPGW | 2 | 48F Ø0.646" OPGW | 5500 | 0 | 0.5 | 4 |
| ADSS | 1 | 24 ADSS | 2250 | 0 | 0.5 | 4 |

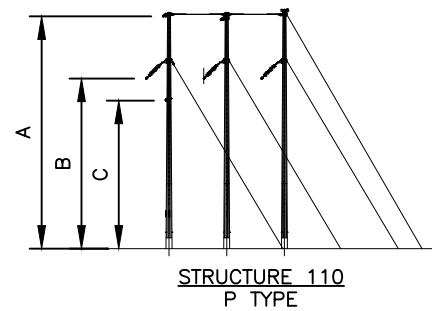
LEGEND:

- #110 STRUCTURE (WITH GUYS)
- PROPERTY BOUNDARY
- T198 LINE 115KV LINE, ☐ OF CONSTRUCTION
- LIMITS OF EVERSOURCE RIGHT OF WAY
- LIMITS OF PUBLIC WATERBODY

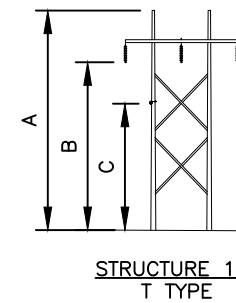
| STRUCTURE LOCATION | | |
|--------------------|--------------|-------------|
| STRUCTURE | LONGITUDE | LATITUDE |
| 110 | -72.27696507 | 42.88851304 |
| 111 | -72.2774592 | 42.88974061 |



PROFILE VIEW
SCALE: HORZ 1" = 300'
VERT 1" = 30'



STR 110: IS AN EVERSOURCE RUNNING ANGLE, SINGLE CIRCUIT, HORIZONTAL CONFIG.



STR 111: IS AN EVERSOURCE TANGENT, SINGLE CIRCUIT H-FRAME, HORIZONTAL CONFIG.

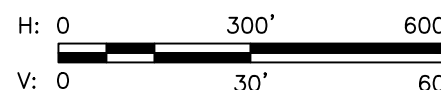
STRUCTURE DETAIL
SCALE: NTS

| STRUCTURE DETAILS | | | | | |
|-------------------|------|----------|------|------|----|
| STRUCTURE | TYPE | MATERIAL | A | B | C |
| 110 | P | STEEL | 65.5 | 47.4 | 42 |
| 111 | T | STEEL | 61 | 46.3 | 36 |

| NESV VERTICAL CLEARANCE (FT) FROM TABLE 232.1 | | |
|---|-------------------|------|
| NATURE OF SURFACE UNDERNEATH WIRES, CONDUCTORS OR CABLES | LINE VOLTAGE (kV) | |
| | NEUTRAL / ADSS | 115 |
| WATER AREAS NOT SUITABLE FOR SAIL BOATING OR WHERE SAIL BOATING IS PROHIBITED | 14 | 18.6 |

NOTES:

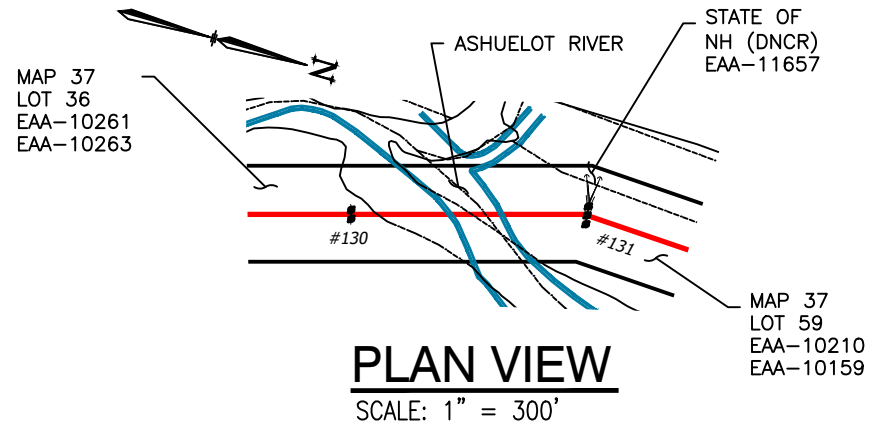
1. PARCEL INFORMATION PROVIDED BY NH GRANIT.
2. ELEVATIONS REFERENCED TO THE NORTH AMERICAN VERTICAL DATUM OF 1988.
3. THE 10 YEAR FLOOD ELEVATION FROM THE FEMA FLOOD INSURANCE STUDY REPORT #33005CV002A (5/23/2006)



| DWG REV | EPN/DESCRIPTION | CONT/PE# | DATE | DRN | CHKD | APPR |
|---------|------------------------------|----------|---------|-----|------|------|
| 1 | SUBMITTED TO PUC WO#T1405A10 | | 7/25/21 | CTS | JRS | CJN |

| | | |
|--|---------------------|-------------|
| | T | 1 |
| | DRAWN | CTS |
| | ENGINEER | CJN |
| | CHECKED | JRS |
| | APPROVED | CJN |
| | DATE | 7/25/2021 |
| T198, 115kV LINE SOUTH BRACH ASHUELOT RIVER CROSSING SWANZEY, NEW HAMPSHIRE EXHIBIT 7 | | |
| SCALE | FILE: T19843901.DWG | DRAWING NO. |
| AS SHOWN | IMAGE: | T19843901 |

11/22/2021 7:50 AM - spensct - C:\Users\spensct\appdata\local\temp\AcPublish_17464\T198+3901.dwg - EXHIBIT 8 Str's 130-131 (WATER CROSSING) 12/2016

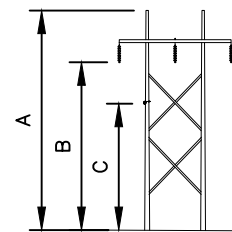
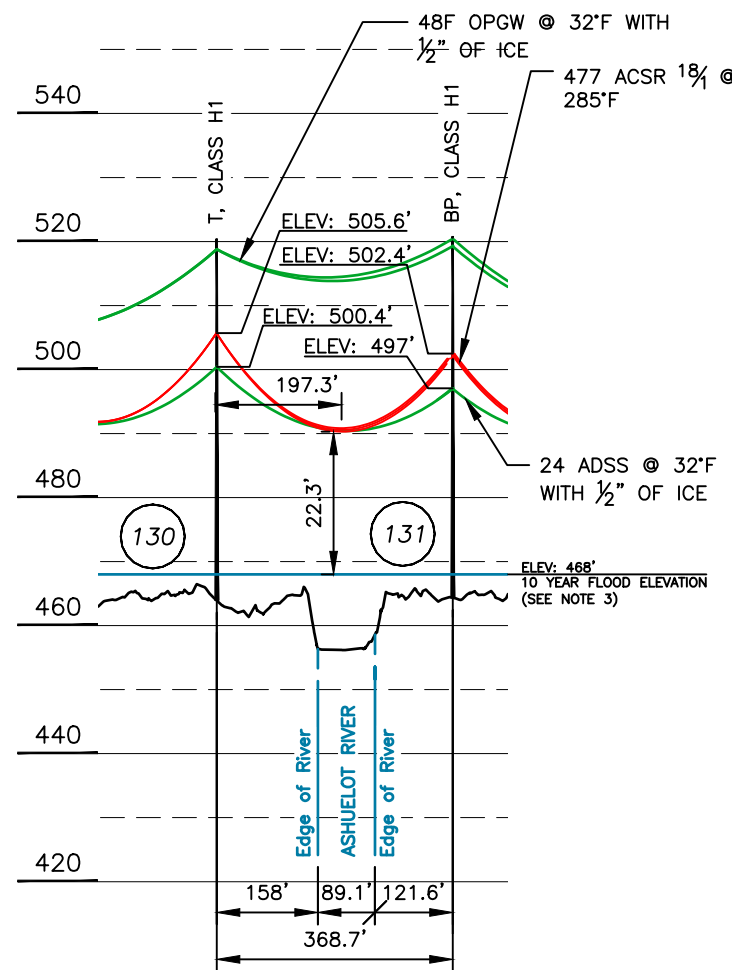


| CABLE SCHEDULE | | | | | | |
|----------------|---------------|-------------------------------|-------------------------|-----------|----------|------------|
| WIRE | QTY OF CABLES | DESCRIPTION | DESIGN CONDITIONS | | | |
| | | | MAX DESIGN TENSION (lb) | TEMP (°F) | ICE (in) | WIND (psf) |
| CONDUCTOR | 3 | ACSR, 477 kcmil 18/1, PELICAN | 4000 | 0 | 0.5 | 4 |
| OPGW | 2 | 48F Ø0.646" OPGW | 5500 | 0 | 0.5 | 4 |
| ADSS | 1 | 24 ADSS | 2250 | 0 | 0.5 | 4 |

LEGEND:

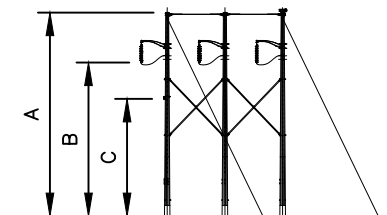
- #110 STRUCTURE (WITH GUYS)
- PROPERTY BOUNDARY
- T198 LINE 115KV LINE, ☐ OF CONSTRUCTION
- LIMITS OF EVERSOURCE RIGHT OF WAY
- LIMITS OF PUBLIC WATERBODY

| STRUCTURE LOCATION | | |
|--------------------|--------------|-------------|
| STRUCTURE | LONGITUDE | LATITUDE |
| 130 | -72.28479711 | 42.90796398 |
| 131 | -72.2851817 | 42.90893439 |



STRUCTURE 130
T TYPE

STR 130: IS AN EVERSOURCE TANGENT, SINGLE CIRCUIT H-FRAME, HORIZONTAL CONFIG.



STRUCTURE 131
BP TYPE

STR'S 131: IS AN EVERSOURCE RUNNING ANGLE, SINGLE CIRCUIT, HORIZONTAL CONFIG.

STRUCTURE DETAIL

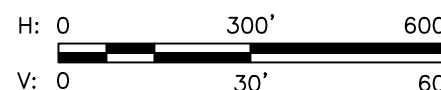
SCALE: NTS

| STRUCTURE DETAILS | | | | | |
|-------------------|------|----------|------|------|------|
| STRUCTURE | TYPE | MATERIAL | A | B | C |
| 130 | T | STEEL | 56.5 | 41.8 | 36.5 |
| 131 | BP | STEEL | 56.5 | 38.2 | 32.8 |

| NESC VERTICAL CLEARANCE (FT) FROM TABLE 232.1 | | |
|---|-------------------|------|
| NATURE OF SURFACE UNDERNEATH WIRES, CONDUCTORS OR CABLES | LINE VOLTAGE (kV) | |
| | NEUTRAL / ADSS | 115 |
| WATER AREAS NOT SUITABLE FOR SAIL BOATING OR WHERE SAIL BOATING IS PROHIBITED | 14 | 18.6 |

NOTES:

1. PARCEL INFORMATION PROVIDED BY NH GRANIT.
2. ELEVATIONS REFERENCED TO THE NORTH AMERICAN VERTICAL DATUM OF 1988.
3. THE 10 YEAR FLOOD ELEVATION FROM THE FEMA FLOOD INSURANCE STUDY REPORT #33005CV001A (5/23/2006)

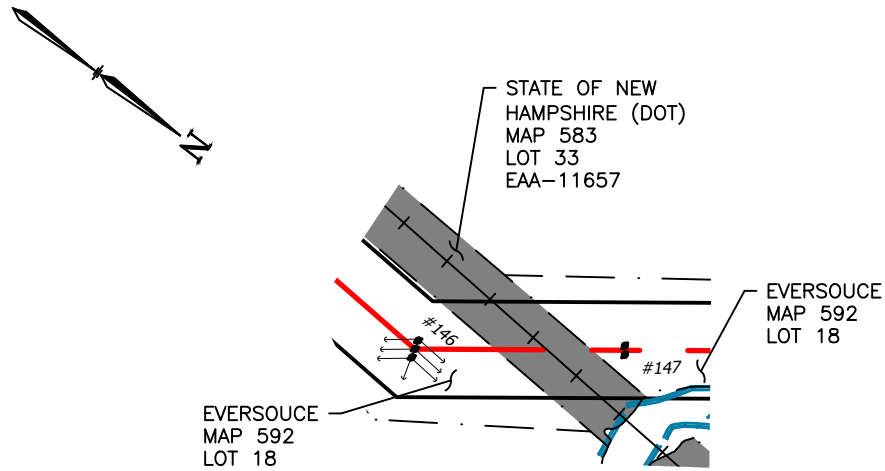


| DWG REV | EPN/DESCRIPTION | CONT/PE# | DATE | DRN | CHKD | APPR |
|---------|------------------------------|----------|---------|-----|------|------|
| 1 | SUBMITTED TO PUC WO#T1405A10 | | 7/25/21 | CTS | JRS | CJN |

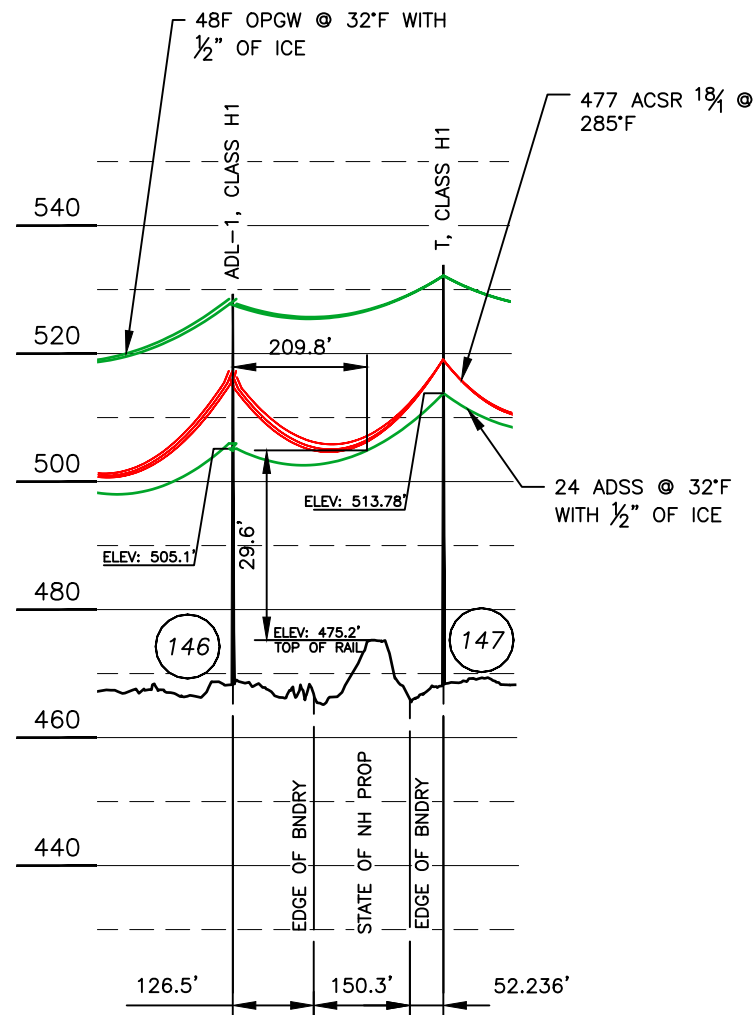
**T198, 115kV LINE
ASHUELOT RIVER CROSSING
SWANZEY, NEW HAMPSHIRE
EXHIBIT 8**

| | | |
|-------------------|-------------------------------|---------------------------------|
| SCALE AS SHOWN | FILE: T19843901.DWG IMAGE: | DRAWING NO. T19843901 |
|-------------------|-------------------------------|---------------------------------|

11/19/2021 6:09 PM - spensct - C:\Users\spensct\appdata\local\temp\AcPublish_17464\T19843501.dwg - EXHIBIT 9 Str's 146-147 (LAND CROSSING) 12/2016

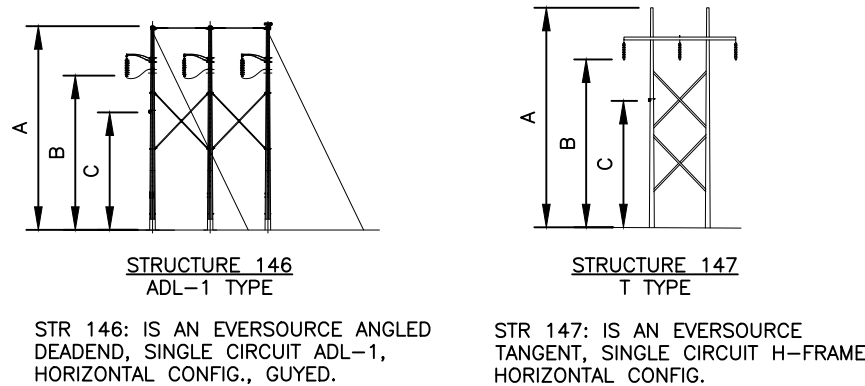


PLAN VIEW
SCALE: 1" = 300'



PROFILE VIEW
SCALE: HORZ 1" = 300'
VERT 1" = 30'

| CABLE SCHEDULE | | | | | | |
|----------------|---------------|-------------------------------|-------------------------|-----------|----------|------------|
| WIRE | QTY OF CABLES | DESCRIPTION | DESIGN CONDITIONS | | | |
| | | | MAX DESIGN TENSION (lb) | TEMP (°F) | ICE (in) | WIND (psf) |
| CONDUCTOR | 3 | ACSR, 477 kcmil 18/1, PELICAN | 2900 | 0 | 0.5 | 4 |
| OPGW | 2 | 48F Ø0.646" OPGW | 5500 | 0 | 0.5 | 4 |
| ADSS | 1 | 24 ADSS | 2250 | 0 | 0.5 | 4 |



STRUCTURE DETAIL
SCALE: NTS

| STRUCTURE DETAILS | | | | | |
|-------------------|-------|----------|------|------|------|
| STRUCTURE | TYPE | MATERIAL | A | B | C |
| 146 | ADL-1 | STEEL | 61 | 49 | 36.8 |
| 147 | T | STEEL | 65.5 | 50.8 | 45.5 |

LEGEND:

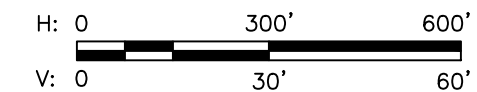
- STRUCTURE (WITH GUYS)
- STATE OF NEW HAMPSHIRE PROPERTY
- PROPERTY BOUNDARY
- T198 LINE 115KV LINE, CL OF CONSTRUCTION
- LIMITS OF EVERSOURCE RIGHT OF WAY
- RAILROAD

NOTES:

1. PARCEL INFORMATION PROVIDED BY NH GRANIT.
2. ELEVATIONS REFERENCED TO THE NORTH AMERICAN VERTICAL DATUM OF 1988.

| NESC VERTICAL CLEARANCE (FT) FROM TABLE 232.1 | | |
|--|-------------------|------|
| NATURE OF SURFACE UNDERNEATH WIRES, CONDUCTORS OR CABLES | LINE VOLTAGE (kV) | |
| | NEUTRAL / ADSS | 115 |
| TOP OF TRACK RAIL | 23.5 | 28.1 |

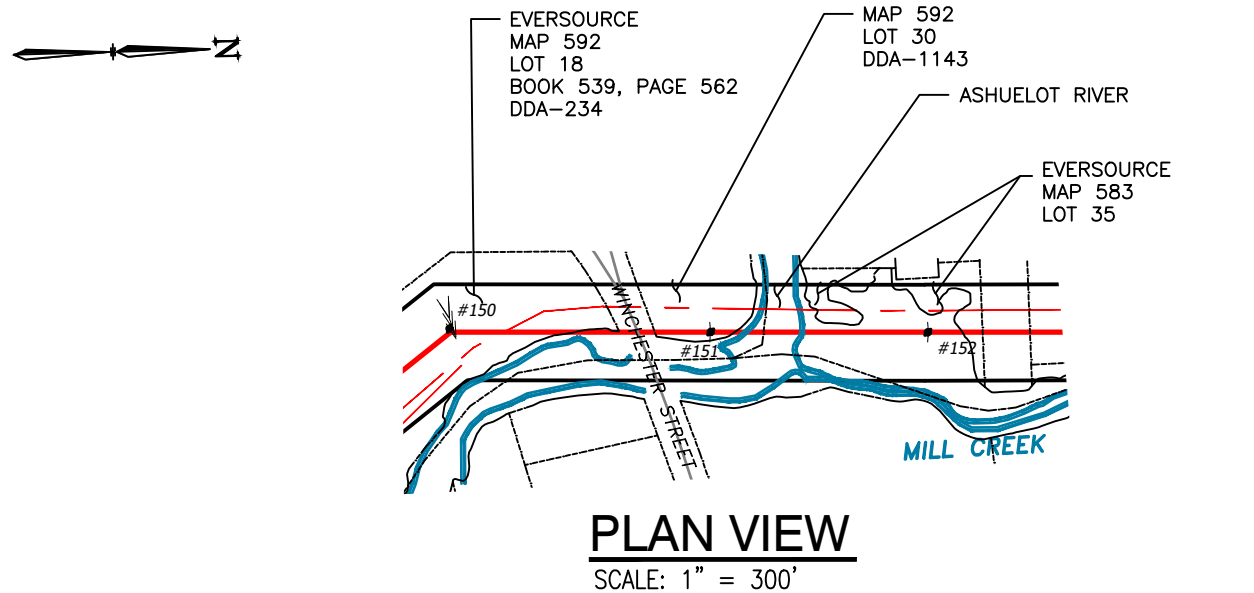
| STRUCTURE LOCATION | | |
|--------------------|--------------|-------------|
| STRUCTURE | LONGITUDE | LATITUDE |
| 146 | -72.28407495 | 42.92358544 |
| 147 | -72.28482174 | 42.924302 |



| | |
|---|--------------------------|
| <p>T198, 115kV LINE STATE OWNED LAND CROSSING, LOCATION PLAN KEENE, NEW HAMPSHIRE EXHIBIT 9</p> | T 1 |
| | DRAWN CTS |
| | ENGINEER CJN |
| | CHECKED JRS |
| | APPROVED CJN |
| DATE 7/25/2021 | DRAWING NO. T19843501 |

| DWG REV | EPN/DESCRIPTION | CONT/PE# | DATE | DRN | CHKD | APPR |
|---------|------------------------------|----------|---------|-----|------|------|
| 1 | SUBMITTED TO PUC WO#T1405A10 | | 7/25/21 | CTS | JRS | CJN |

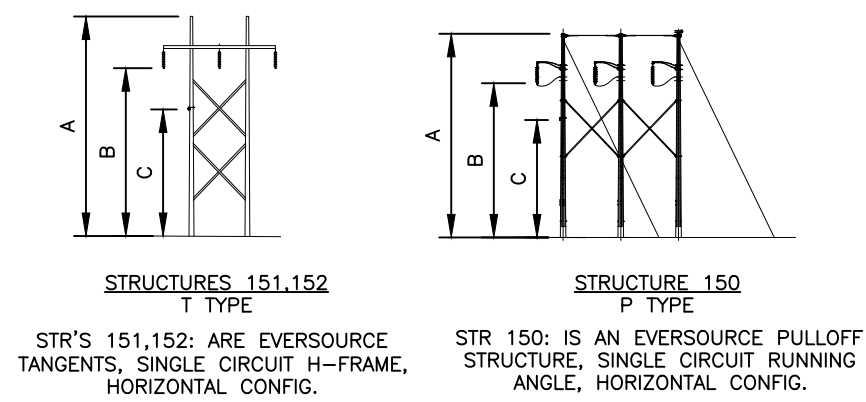
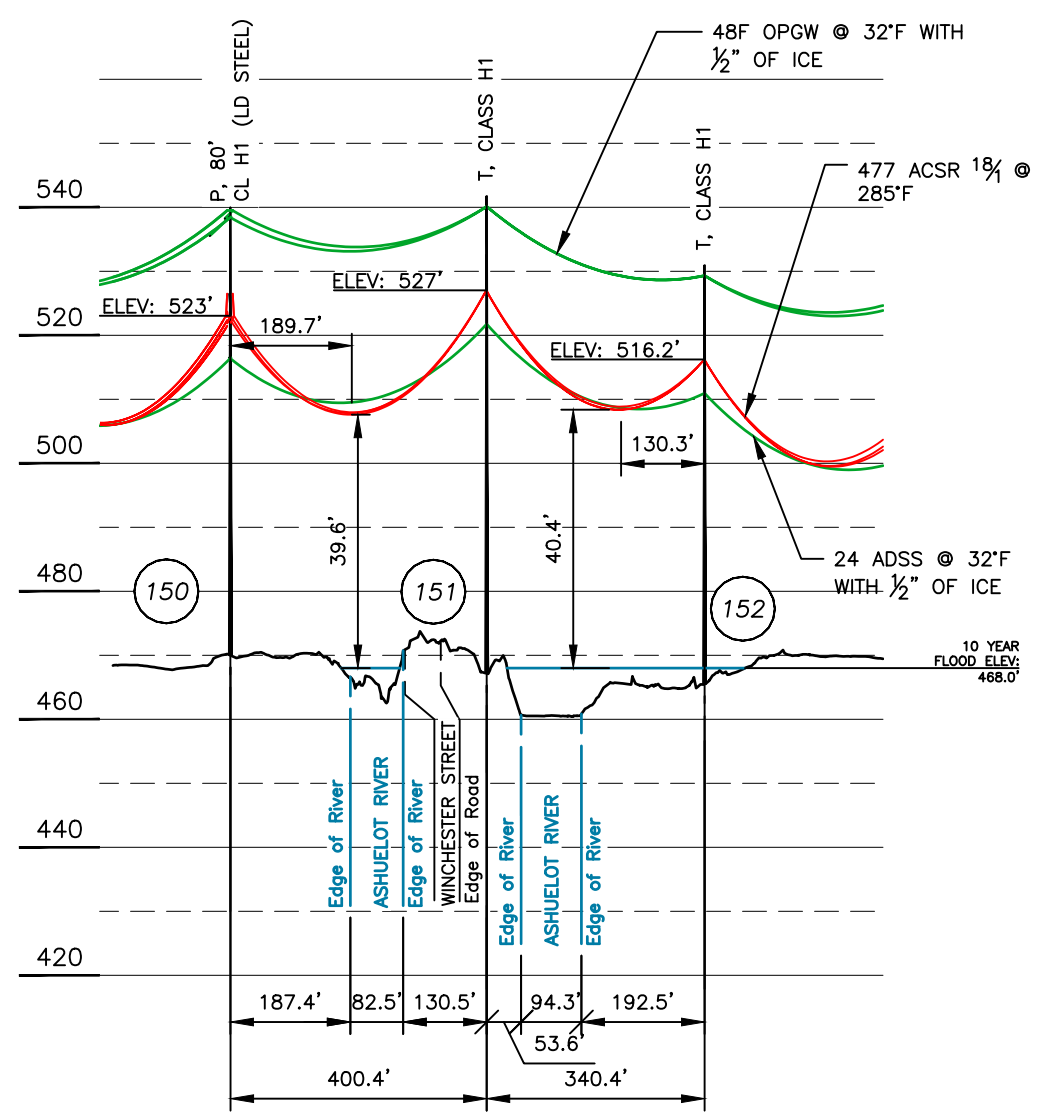
11/22/2021 7:50 AM - spensct - C:\Users\spensct\appdata\local\temp\AcPublish_17464\T19843901.dwg - EXHIBIT 10 Str's 151-152 (WATER CROSSING) 12/2016



| CABLE SCHEDULE | | | | | | |
|----------------|---------------|-------------------------------|-------------------------|-----------|----------|------------|
| WIRE | QTY OF CABLES | DESCRIPTION | DESIGN CONDITIONS | | | |
| | | | MAX DESIGN TENSION (lb) | TEMP (°F) | ICE (in) | WIND (psf) |
| CONDUCTOR | 3 | ACSR, 477 kcmil 18/1, PELICAN | 2900 | 0 | 0.5 | 4 |
| OPGW | 2 | 48F Ø0.646" OPGW | 5500 | 0 | 0.5 | 4 |
| ADSS | 1 | 24 ADSS | 2250 | 0 | 0.5 | 4 |

- LEGEND:**
- #151 STRUCTURE
 - PROPERTY BOUNDARY
 - T198 LINE 115KV LINE, Q OF CONSTRUCTION
 - LIMITS OF EVERSOURCE RIGHT OF WAY
 - LIMITS OF PUBLIC WATERBODY

| STRUCTURE LOCATION | | |
|--------------------|--------------|-------------|
| STRUCTURE | LONGITUDE | LATITUDE |
| 150 | -72.28686139 | 42.92627303 |
| 151 | -72.28683064 | 42.92737143 |
| 152 | -72.2868045 | 42.92830513 |

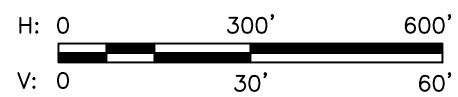


STRUCTURE DETAIL
SCALE: NTS

| STRUCTURE DETAILS | | | | | |
|-------------------|------|----------|------|------|------|
| STRUCTURE | TYPE | MATERIAL | A | B | C |
| 150 | P | STEEL | 70 | 53.1 | 46.4 |
| 151 | T | STEEL | 74.5 | 59.8 | 54.5 |
| 152 | T | STEEL | 65.4 | 50.7 | 45.4 |

| NESC VERTICAL CLEARANCE (FT) FROM TABLE 232.1 | | |
|---|-------------------|------|
| NATURE OF SURFACE UNDERNEATH WIRES, CONDUCTORS OR CABLES | LINE VOLTAGE (kV) | |
| | NEUTRAL / ADSS | 115 |
| WATER AREAS NOT SUITABLE FOR SAIL BOATING OR WHERE SAIL BOATING IS PROHIBITED | 14 | 18.6 |

- NOTES:**
1. PARCEL INFORMATION PROVIDED BY NH GRANIT.
 2. ELEVATIONS REFERENCED TO THE NORTH AMERICAN VERTICAL DATUM OF 1988.
 3. THE 10 YEAR FLOOD ELEVATION FROM THE FEMA FLOOD INSURANCE STUDY REPORT 33005CV001A (5/23/2006)



**T198, 115kV LINE
ASHUELOT RIVER CROSSING
KEENE, NEW HAMPSHIRE
EXHIBIT 10**

| | |
|-----------------|-------------------|
| DRAWN CTS | T 1 |
| ENGINEER CJN | CHECKED JRS |
| APPROVED CJN | DATE 7/25/2021 |

SCALE AS SHOWN FILE: T19843901.DWG DRAWING NO. T19843901

| DWG REV | EPN/DESCRIPTION | CONT/PE# | DATE | DRN | CHKD | APPR |
|---------|------------------------------|----------|----------|-----|------|------|
| 1 | SUBMITTED TO PUC WO#T1405A10 | | 11/10/21 | CTS | JRS | CJN |