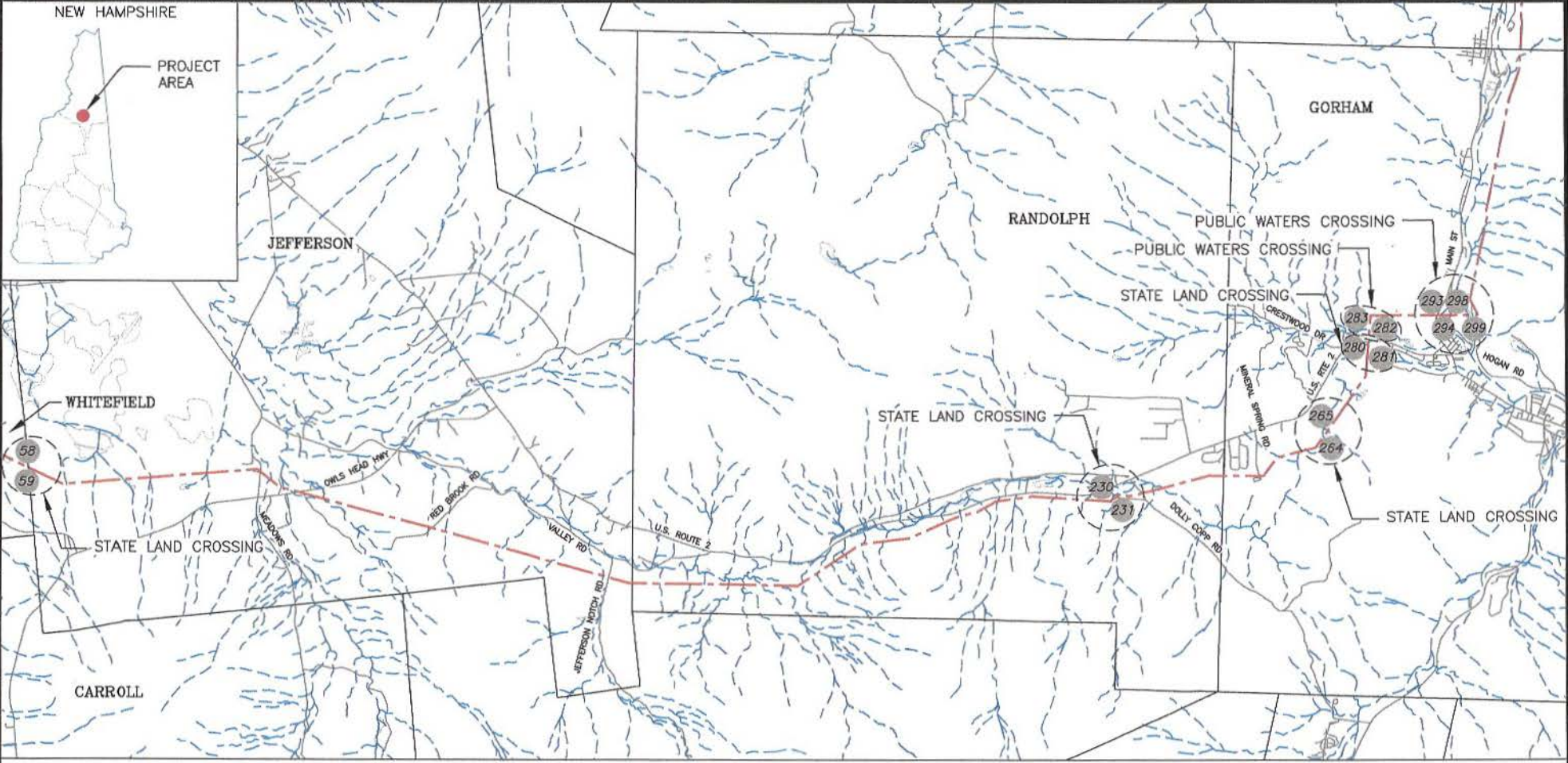
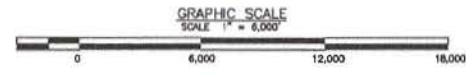


3/12/2020 9:52 AM - Skern - C:\Users\skern\OneDrive - TRC\1\301411 - Eversource TLine Co...S13643901.dwg - S13643901 ES VER. 12/2016



- LEGEND:**
- DENOTES TRANSMISSION LINE
 - DENOTES STRUCTURE NUMBER
 - DENOTES ROAD
 - DENOTES WATER
 - DENOTES RIVERS & STREAMS
 - DENOTES COUNTY LINES



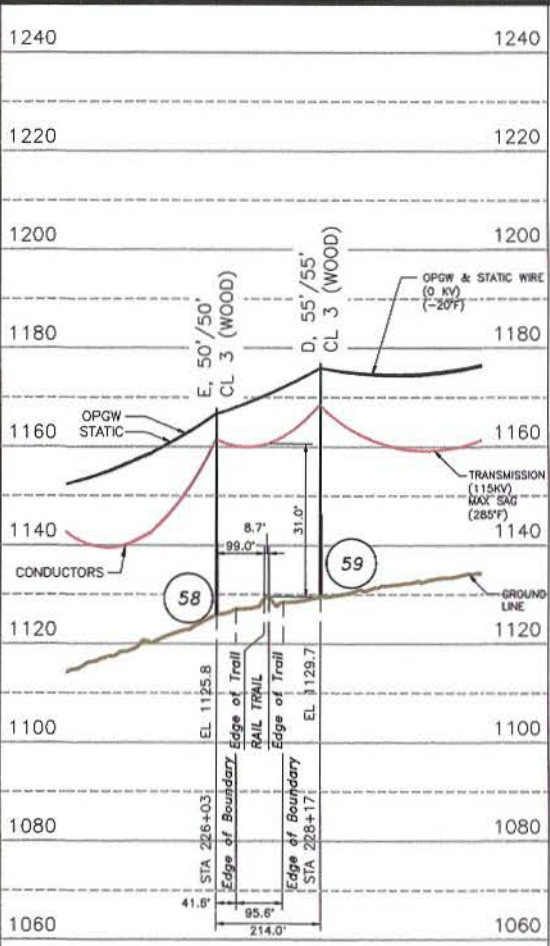
NO.	ISSUED TO PUC	DATE	BY	CHKD	APPD	
1		03/27/20	SAL	GEL	BRS	
DWG REV	EPN/DESCRIPTION	CONT/FILE	DATE	DRN	CHG	APPD

EVERSOURCE ENERGY

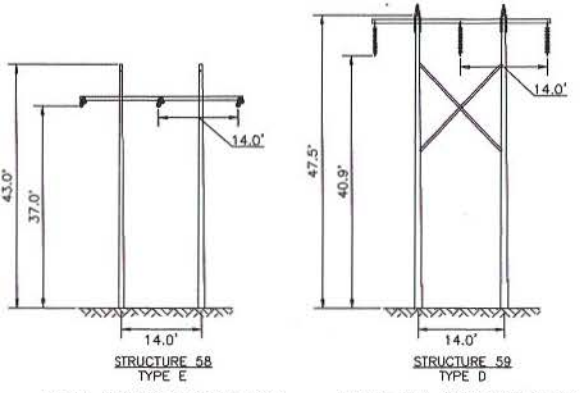
LINE S136 115KV TRANSMISSION
STATE LAND & PUBLIC WATERBODY
OVERVIEW MAP
EXHIBIT #1

SCALE AS SHOWN	FILED S13643901.DWG DATE: 7/15/19
DRAWING NO. S13643901	T 1 DRAWN NEB/TRC ENGINEER GEL/TRC CHECKED SEL/TRC APPROVED GEL/TRC DATE 7/15/19

3/13/2020 4:24 PM - S:\Users\skern\OneDrive - ITC\1\301411 - Eversource\Line Co...S13643504.dwg - S13643504 ES VER: 12/2016

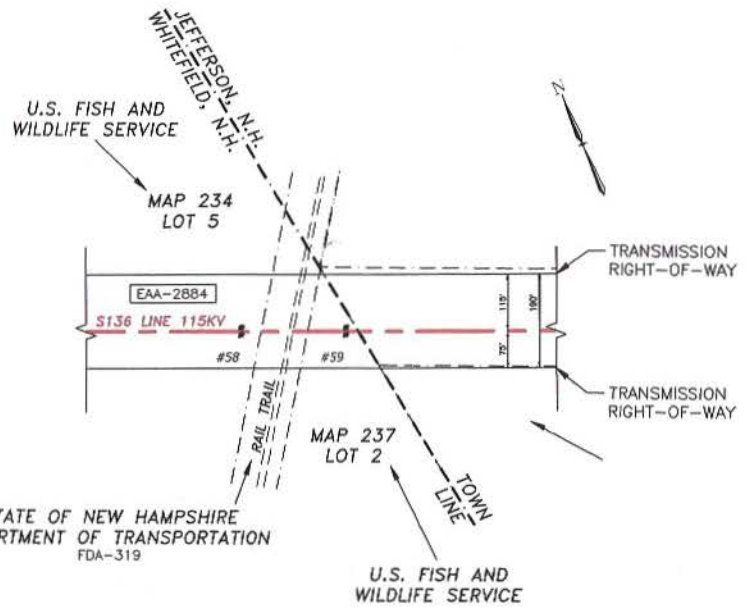


TOWN OF WHITEFIELD, N.H.



STR 58: IS A SINGLE CIRCUIT WOOD DEADEND STRUCTURE, HORIZONTAL CONFIG., GUYED.
 STR 59: IS A SINGLE CIRCUIT WOOD TANGENT STRUCTURE, HORIZONTAL CONFIG., GUYED.

NESV VERTICAL CLEARANCE (FT) FROM TABLE 232.1	
NATURE OF SURFACE UNDERNEATH WIRES, CONDUCTORS OR CABLES	LINE VOLTAGE (kV)
ROADS, STREETS AND OTHER AREAS SUBJECT TO TRUCK TRAFFIC	115
SPACES AND WAYS SUBJECT TO PEDESTRIAN OR RESTRICTED TRAFFIC ONLY	20.1
	16.1



STATE OF NEW HAMPSHIRE
 DEPARTMENT OF TRANSPORTATION
 FDA-319

U.S. FISH AND WILDLIFE SERVICE

- NOTES:
 1. VERTICAL DATUM IS NAVD88 IN FEET.
 2. COORDINATE SYSTEM IS NEW HAMPSHIRE STATE PLANE NAD 83.
 3. ALL LINE WORK FOR PARCELS FROM NH GRANIT UNLESS NOTED OTHERWISE.

STRUCTURE LOCATION:

STR. #58 - LAT. = 44°22'1.049"N
 LONG. = 71°31'39.957"W
 STR. #59 - LAT. = 44°22'0.255"N
 LONG. = 71°31'37.232"W

CABLE SCHEDULE:

WIRE	# OF CABLES	TYPE	DIA. (IN.)	WEIGHT/1000 FT	CABLE STRENGTH (LBS.)
STATIC	1	7#8 ALUMOWELD	0.385	261.8	15,930
OPGW	1	INCAB OPGW	0.457	245.0	11,719
TRANSMISSION COND.	3	795 KCMIL 36/1 ACSR COOT	1.040	803.6	16,800

PROFILE LEGEND:



NO.	ISSUED TO PUC	DATE	CHKD	APPD
1		03/27/20		

EVERSOURCE ENERGY

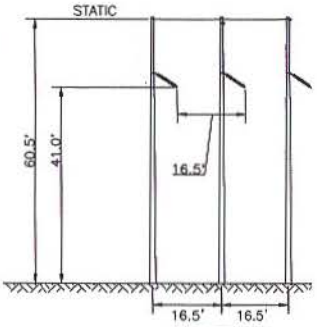
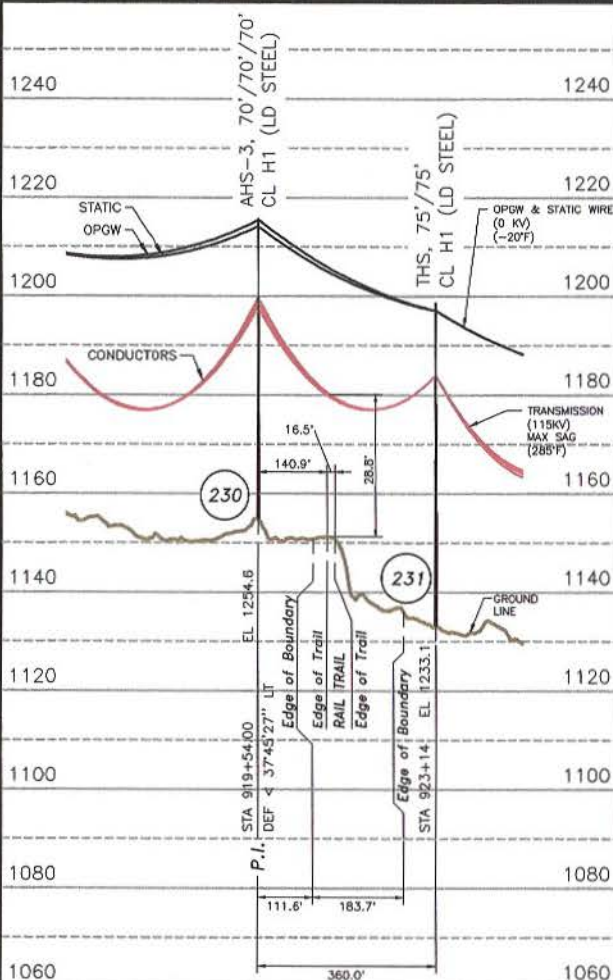
LINE S136 115KV TRANSMISSION
 STATE LAND CROSSING
 WHITEFIELD, N.H.
 EXHIBIT #2

DATE: 11/13/19

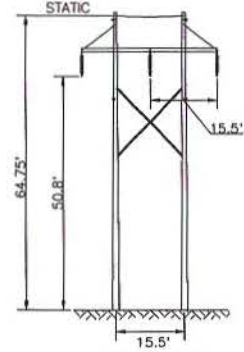
DRAWING NO: S13643504

3/26/2020 1:20 PM - Skern - C:\Users\skern\OneDrive - TRC\1\301411 - Eversource\Line Co...S13643503.DWG - S13643503 ES VER. 12/2016

TOWN OF RANDOLPH, N.H.

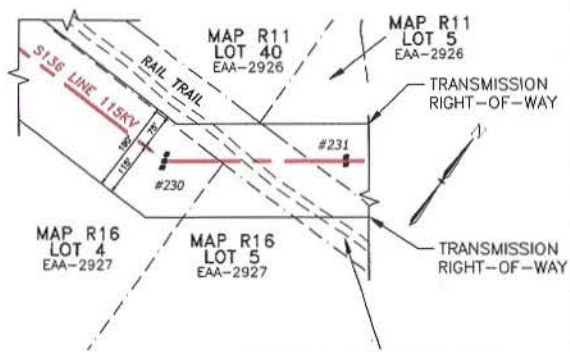


STR 230: IS A SINGLE CIRCUIT STEEL ANGLE STRUCTURE, HORIZONTAL CONFIG., GUYED.



STR 231: IS A SINGLE CIRCUIT STEEL TANGENT STRUCTURE, HORIZONTAL CONFIG.

NESC VERTICAL CLEARANCE (FT) FROM TABLE 232.1	
NATURE OF SURFACE UNDERNEATH WIRES, CONDUCTORS OR CABLES	LINE VOLTAGE (kV)
	115
ROADS, STREETS AND OTHER AREAS SUBJECT TO TRUCK TRAFFIC	20.1
SPACES AND WAYS SUBJECT TO PEDESTRIAN OR RESTRICTED TRAFFIC ONLY	16.1



STATE OF NEW HAMPSHIRE
DEPARTMENT OF TRANSPORTATION

- NOTES:
 1. VERTICAL DATUM IS NAVD88 IN FEET.
 2. COORDINATE SYSTEM IS NEW HAMPSHIRE STATE PLANE NAD 83.
 3. ALL LINE WORK FOR PARCELS FROM NH GRANIT UNLESS NOTED OTHERWISE.

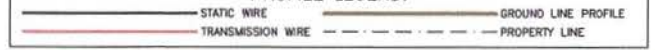
STRUCTURE LOCATION:

- STR. #230 - LAT. = 44°22'14.903"N
 LONG. = 71°16'22.701"W
 STR. #231 - LAT. = 44°22'17.029"N
 LONG. = 71°16'18.723"W

CABLE SCHEDULE:

WIRE	# OF CABLES	TYPE	DIA. (IN.)	WEIGHT/1000 FT	CABLE STRENGTH (LBS.)
STATIC	1	7#8 ALUMOWELD	0.385	261.8	15,930
OPGW	1	INCAB CPGW	0.457	245.0	11,719
TRANSMISSION COND.	3	795 KCMIL 36/1 ACSR COOT	1.040	803.6	16,800

PROFILE LEGEND:



GRAPHIC SCALE



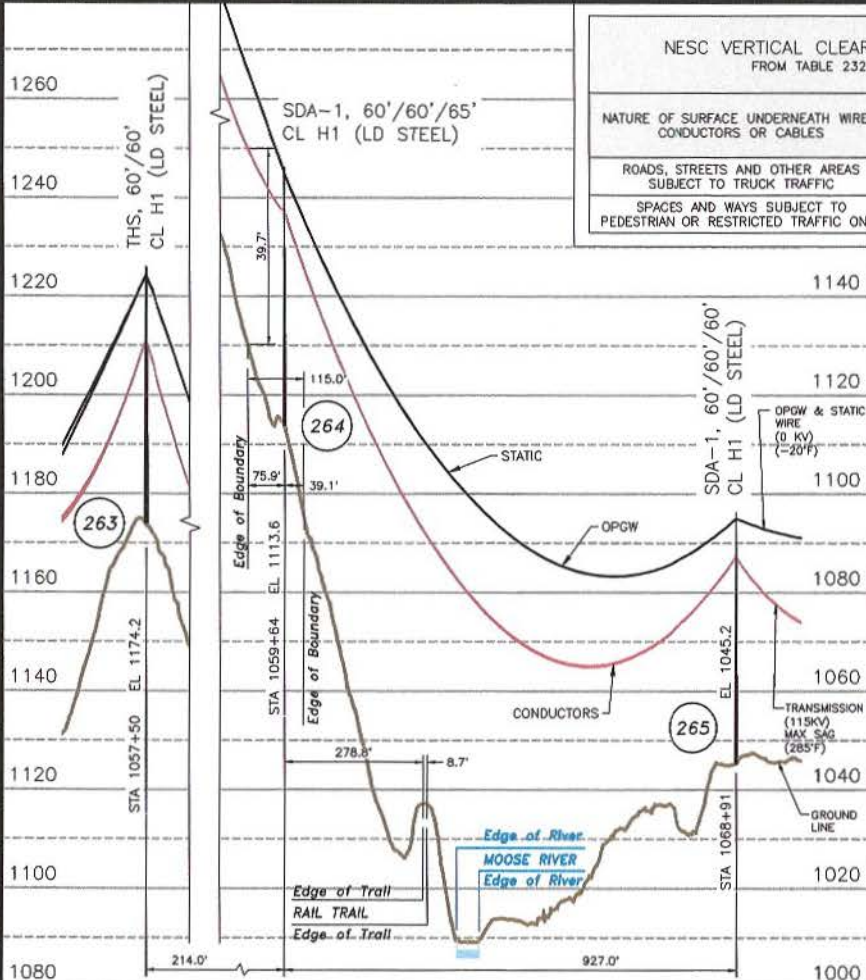
ISSUED TO PJC	DATE	SAL	GEL	BRS
EPH/DESCRIPTION	DATE	BRN	CHG	APPR



LINE S136 115KV TRANSMISSION
 STATE LAND CROSSING
 RANDOLPH, N.H.
 EXHIBIT #3

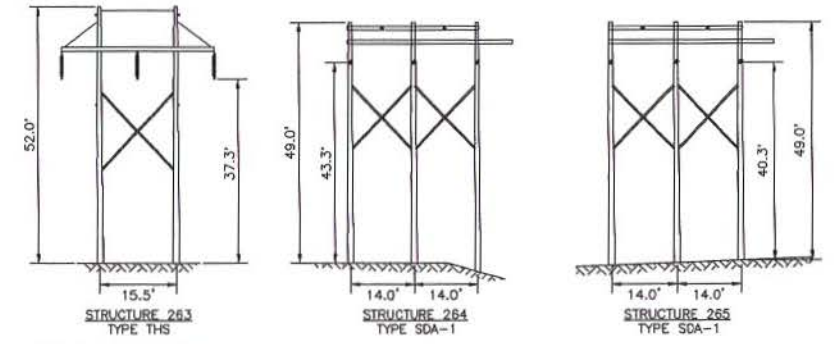
SCALE AS SHOWN	FILE: S13643503.DWG	DRAWING NO. S13643503
----------------	---------------------	-----------------------

T	1
DESIGN	DRL/TRC
ENGINEER	GEL/TRC
CHECKED	SAL/TRC
APPROVED	GEL/TRC
DATE	08/06/19

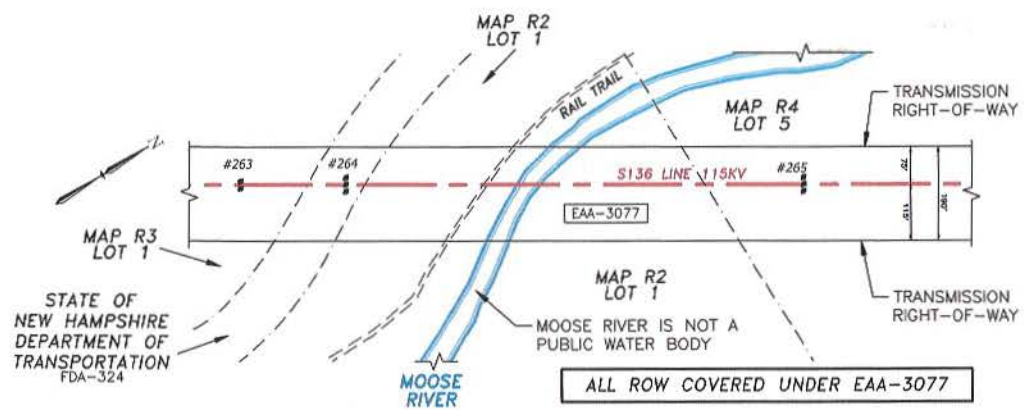


NESC VERTICAL CLEARANCE (FT) FROM TABLE 232.1	
NATURE OF SURFACE UNDERNEATH WIRES, CONDUCTORS OR CABLES	LINE VOLTAGE (KV)
ROADS, STREETS AND OTHER AREAS SUBJECT TO TRUCK TRAFFIC	20.1
SPACES AND WAYS SUBJECT TO PEDESTRIAN OR RESTRICTED TRAFFIC ONLY	16.1

TOWN OF GORHAM, N.H.



STR 263: IS A SINGLE CIRCUIT STEEL TANGENT STRUCTURE, HORIZONTAL CONFIG.
 STR 264: IS A SINGLE CIRCUIT STEEL DEADEND STRUCTURE, HORIZONTAL CONFIG., GUYED.
 STR 265: IS A SINGLE CIRCUIT WOOD DEADEND STRUCTURE, HORIZONTAL CONFIG., GUYED.



NOTES:
 1. VERTICAL DATUM IS NAVD88 IN FEET.
 2. COORDINATE SYSTEM IS NEW HAMPSHIRE STATE PLANE NAD 83 US SURVEY FEET.
 3. ALL LINE WORK FOR PARCELS FROM NH GRANIT UNLESS NOTED OTHERWISE.

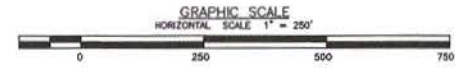
STRUCTURE LOCATION:

- STR. #263 - LAT. = 44°22'55.128"N
LONG. = 71°13'29.235"W
- STR. #264 - LAT. = 44°22'56.922"N
LONG. = 71°13'27.672"W
- STR. #265 - LAT. = 44°23'4.659"N
LONG. = 71°13'20.861"W

CABLE SCHEDULE:

WIRE	# OF CABLES	TYPE	DIA. (IN.)	WEIGHT/1000 FT	CABLE STRENGTH (LBS.)
STATIC	1	7#8 ALUMOWELD	0.385	261.8	15,930
OPGW	1	INCAB OPGW	0.457	245.0	11,719
TRANSMISSION COND.	3	795 KCMIL 36/1 ACSR COOT	1.040	803.6	16,800

PROFILE LEGEND:

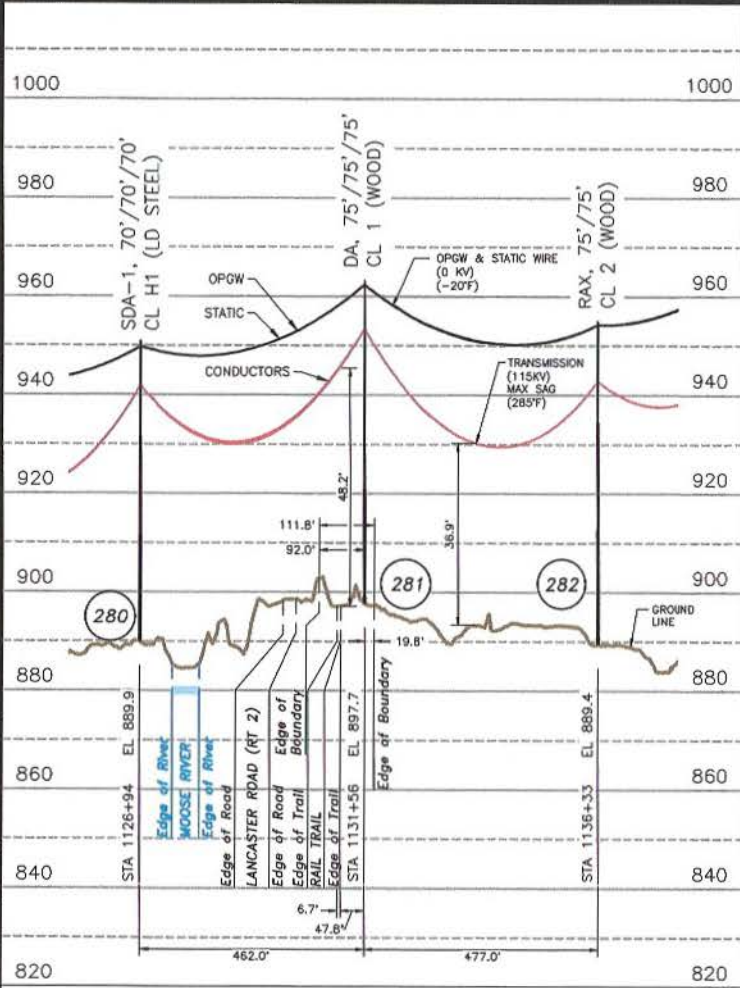


EVERSOURCE ENERGY

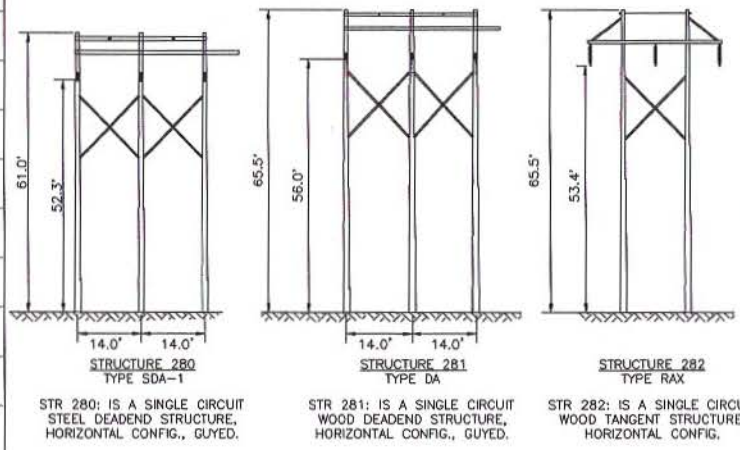
LINE S136 115KV TRANSMISSION
 STATE LAND CROSSING
 GORHAM, N.H.
 EXHIBIT #4

SCALE: AS SHOWN
 FILE: S13643502.DWG
 DATE: 08/06/19
 DRAWING NO: S13643502

3/10/2020 3:05 PM - Skern - C:\Users\skern\OneDrive - TRC\1\301411 - Eversource\TLine Co...S13643501.dwg - S13643501 ES VER: 12/2016

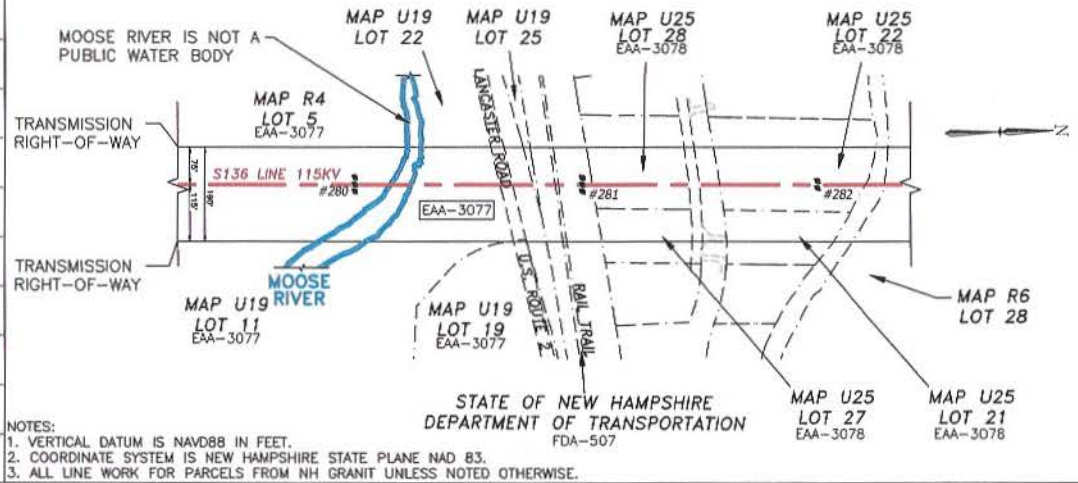


TOWN OF GORHAM, N.H.



NESC VERTICAL CLEARANCE (FT) FROM TABLE 232.1	
NATURE OF SURFACE UNDERNEATH WIRES, CONDUCTORS OR CABLES	LINE VOLTAGE (KV)
ROADS, STREETS AND OTHER AREAS SUBJECT TO TRUCK TRAFFIC	20.1
SPACES AND WAYS SUBJECT TO PEDESTRIAN OR RESTRICTED TRAFFIC ONLY	16.1
WATER AREAS NOT SUITABLE FOR SAIL BOATING OR WHERE SAIL BOATING IS PROHIBITED	18.6

STR 280: IS A SINGLE CIRCUIT STEEL DEADEND STRUCTURE, HORIZONTAL CONFIG., GUYED.
 STR 281: IS A SINGLE CIRCUIT WOOD DEADEND STRUCTURE, HORIZONTAL CONFIG., GUYED.
 STR 282: IS A SINGLE CIRCUIT WOOD TANGENT STRUCTURE, HORIZONTAL CONFIG.



- NOTES:
 1. VERTICAL DATUM IS NAVD88 IN FEET.
 2. COORDINATE SYSTEM IS NEW HAMPSHIRE STATE PLANE NAD 83.
 3. ALL LINE WORK FOR PARCELS FROM NH GRANIT UNLESS NOTED OTHERWISE.

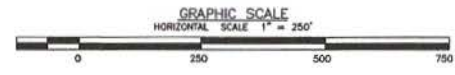
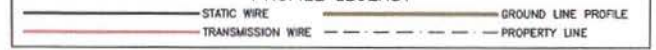
STRUCTURE LOCATION:

- STR. #280 - LAT. = 44°23'55.892"N
LONG. = 71°12'50.888"W
- STR. #281 - LAT. = 44°24'0.450"N
LONG. = 71°12'50.695"W
- STR. #282 - LAT. = 44°24'5.161"N
LONG. = 71°12'50.497"W

CABLE SCHEDULE:

WIRE	# OF CABLES	TYPE	DIA. (IN.)	WEIGHT/1000 FT	CABLE STRENGTH (LBS.)
STATIC	1	7#8 ALUMOWELD	0.385	261.8	15,930
OPGW	1	INCBP OPGW	0.457	245.0	11,719
TRANSMISSION COND.	3	795 KCMIL 36/1 ACSR COOT	1.040	803.6	16,800

PROFILE LEGEND:

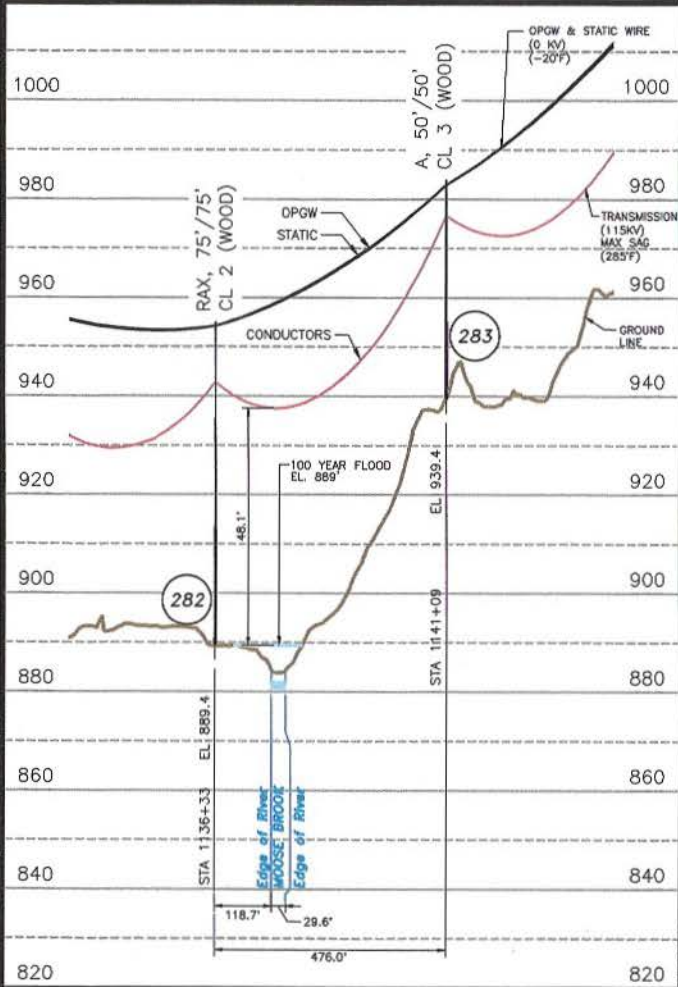


ISSUED TO PUC	03/27/20	DRS	SAL	GEL
EPN/DESCRIPTION	CONT/FEET	DATE	DRN	CHKD

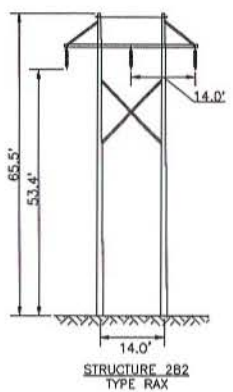
EVERSOURCE ENERGY

LINE S136 115KV TRANSMISSION
STATE LAND CROSSING
GORHAM, N.H.
EXHIBIT #5

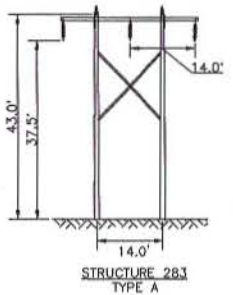
SCALE AS SHOWN	FILE: S13643501.DWG	DRAWING NO. S13643501
----------------	---------------------	-----------------------



TOWN OF GORHAM, N.H.

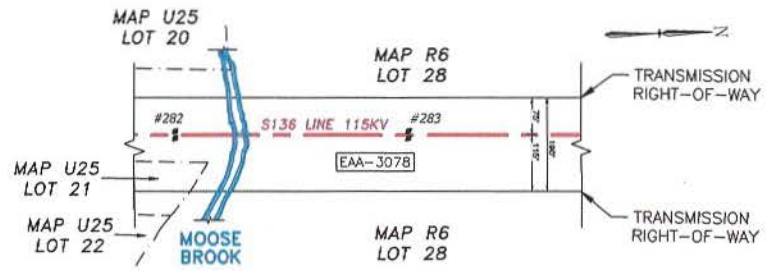


STR 282: IS A SINGLE CIRCUIT WOOD TANGENT STRUCTURE, HORIZONTAL CONFIG.



STR 283: IS A SINGLE CIRCUIT WOOD TANGENT STRUCTURE, HORIZONTAL CONFIG.

NESC VERTICAL CLEARANCE (FT) FROM TABLE 232.1	
NATURE OF SURFACE UNDERNEATH WIRES, CONDUCTORS OR CABLES	LINE VOLTAGE (KV)
ROADS, STREETS AND OTHER AREAS SUBJECT TO TRUCK TRAFFIC	115
SPACES AND WAYS SUBJECT TO PEDESTRIAN OR RESTRICTED TRAFFIC ONLY	20.1
WATER AREAS NOT SUITABLE FOR SAIL BOATING OR WHERE SAIL BOATING IS PROHIBITED	16.1
	18.6



NOTES:
 1. VERTICAL DATUM IS NAVD88 IN FEET.
 2. COORDINATE SYSTEM IS NEW HAMPSHIRE STATE PLANE NAD 83.
 3. ALL LINE WORK FOR PARCELS FROM NH GRANIT UNLESS NOTED OTHERWISE.

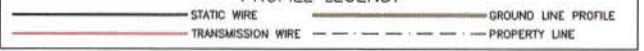
STRUCTURE LOCATION:

STR. #282 - LAT. = 44°24'5.161"N
 LONG. = 71°12'50.497"W
 STR. #283 - LAT. = 44°24'9.855"N
 LONG. = 71°12'50.285"W

CABLE SCHEDULE:

WIRE	# OF CABLES	TYPE	DIA. (IN.)	WEIGHT/1000 FT	CABLE STRENGTH (LBS.)
STATIC	1	7#8 ALUMOWELD	0.385	261.8	15,930
OPGW	1	INCAB OPGW	0.457	245.0	11,719
TRANSMISSION COND.	3	795 KCML 36/1 ACSR COOT	1.040	803.6	16,800

PROFILE LEGEND:



NO.	ISSUED TO PUC	DATE	SAL	GEL	BRS
1	ISSUED TO PUC	09/27/20	SAL	GEL	BRS

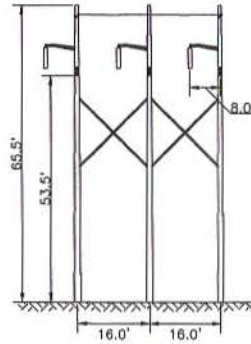
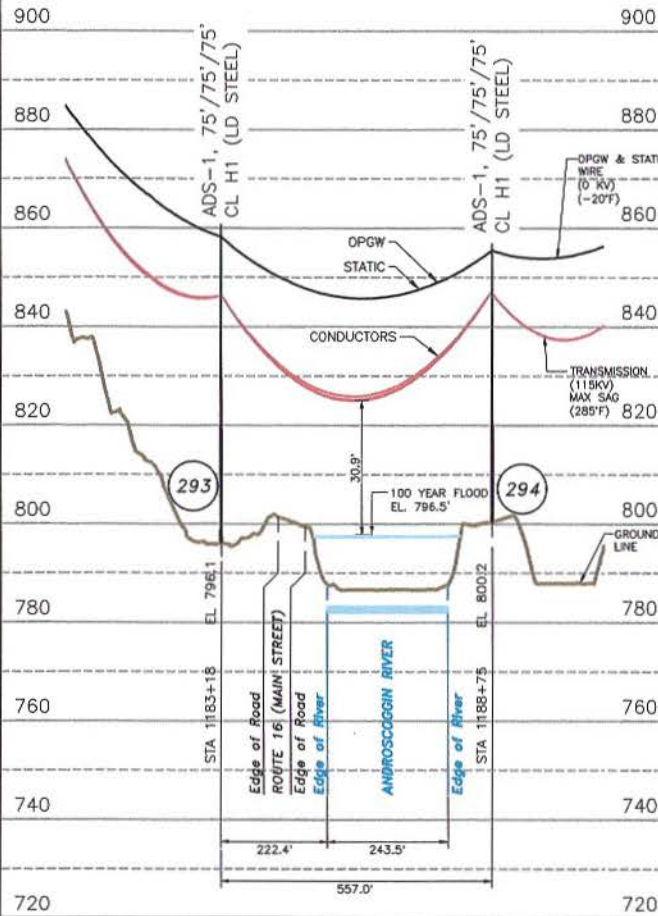
EVERSOURCE ENERGY

LINE S136 115KV TRANSMISSION
 MOOSE BROOK WATERBODY CROSSING
 GORHAM, N.H.
 EXHIBIT #6

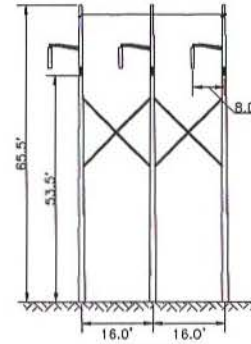
T	I
DRAWN	SAL/TRC
ENGINEER	GEL/TRC
CHECKED	NEB/TRC
APPROVED	GEL/TRC
DATE	10/24/19

SCALE AS SHOWN	FILE: S13643904.DWG	DRAWING NO. S13643904
----------------	---------------------	-----------------------

TOWN OF GORHAM, N.H.



STR 293: IS A SINGLE CIRCUIT STEEL DEADEND STRUCTURE, HORIZONTAL CONFIG., GUYED.



STR 294: IS A SINGLE CIRCUIT STEEL DEADEND STRUCTURE, HORIZONTAL CONFIG., GUYED.

NESC VERTICAL CLEARANCE (FT) FROM TABLE 232.1	
NATURE OF SURFACE UNDERNEATH WIRES, CONDUCTORS OR CABLES	LINE VOLTAGE (KV)
ROADS, STREETS AND OTHER AREAS SUBJECT TO TRUCK TRAFFIC	115
SPACES AND WAYS SUBJECT TO PEDESTRIAN OR RESTRICTED TRAFFIC ONLY	20.1
WATER AREAS NOT SUITABLE FOR SAIL BOATING OR WHERE SAIL BOATING IS PROHIBITED	16.1
	18.6



- NOTES:
1. VERTICAL DATUM IS NAVD88 IN FEET.
 2. COORDINATE SYSTEM IS NEW HAMPSHIRE STATE PLANE NAD 83.
 3. ALL LINE WORK FOR PARCELS FROM NH GRANIT UNLESS NOTED OTHERWISE.
 4. FLOOD ELEVATION OBTAINED FROM FEMA FLOOD MAP 33007C0981D, EFFECTIVE 02/20/2013.

STRUCTURE LOCATION:

STR. #293 - LAT. = 44°24'16.472"N
LONG. = 71°11'58.839"W

STR. #294 - LAT. = 44°24'16.747"N
LONG. = 71°11'51.179"W

CABLE SCHEDULE:

WIRE	# OF CABLES	TYPE	DIA. (IN.)	WEIGHT/1000 FT	CABLE STRENGTH (LBS.)
STATIC	1	7#8 ALUMOWELD	0.385	261.8	15,930
OPGW	1	INCAB OPGW	0.457	245.0	11,719
TRANSMISSION COND.	3	795 KCMIL 36/1 ACSR COOT	1.040	803.6	16,800

PROFILE LEGEND:



GRAPHIC SCALE

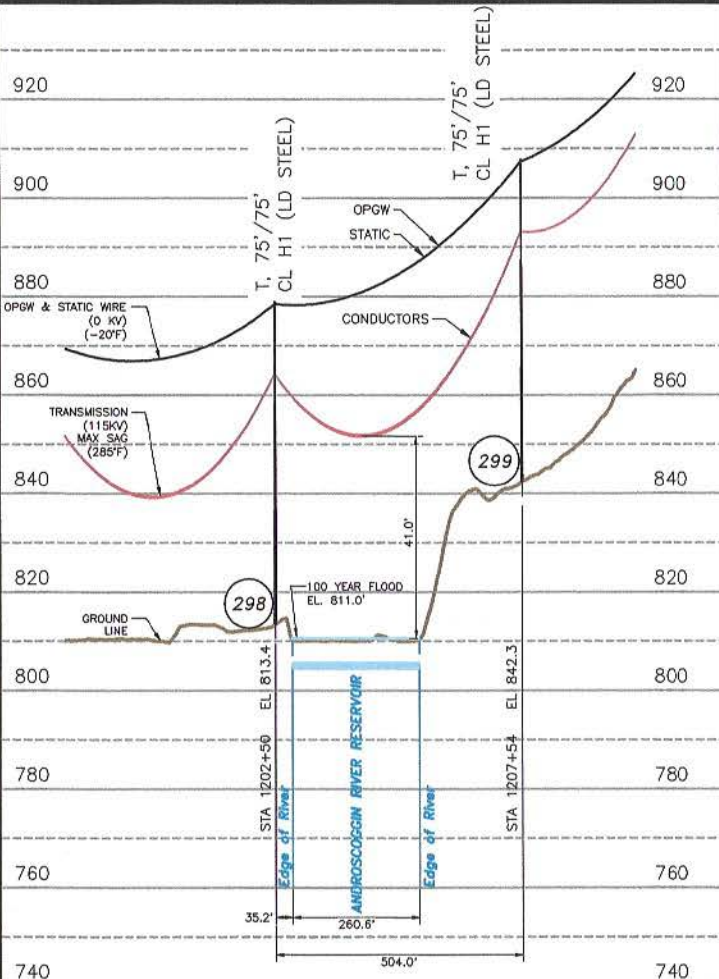


NO.	ISSUED TO	DATE	BY	CHKD	APPD
1	ISSUED TO PUC	03/27/20	SAL	GEL	IRS
	ENR/DESCRIPTION	DATE	ENR	CHKD	APPD

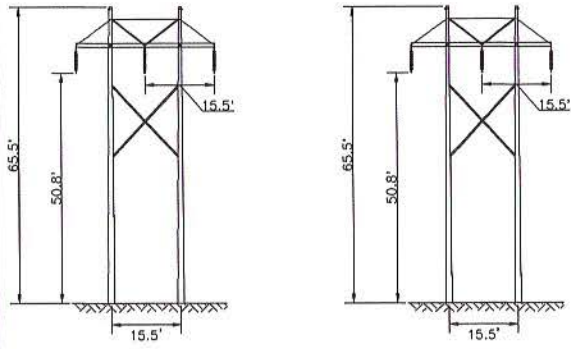
EVERSOURCE ENERGY

LINE S136 115KV TRANSMISSION
ANDROSCOGGIN RIVER WATERBODY CROSSING
GORHAM, N.H.
EXHIBIT #7

SCALE AS SHOWN	FILE: S13643903.DWG
DRAWN: SAL/TRC	DRAWING NO. S13643903
ENGINEER: GEL/TRC	DATE: 06/18/19
CHECKED: NEB/TRC	
APPROVED: GEL/TRC	



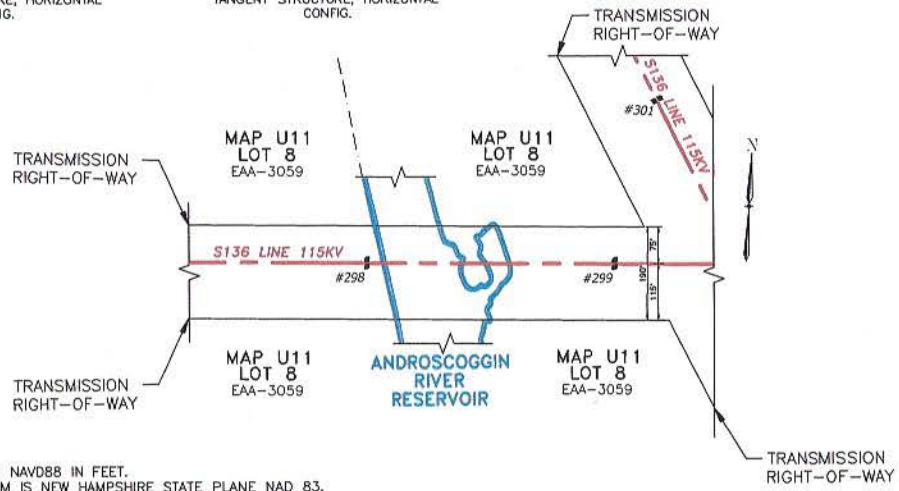
TOWN OF GORHAM, N.H.



STR 298: IS A SINGLE CIRCUIT STEEL TANGENT STRUCTURE, HORIZONTAL CONFIG.

STR 299: IS A SINGLE CIRCUIT STEEL TANGENT STRUCTURE, HORIZONTAL CONFIG.

NESC VERTICAL CLEARANCE (FT) FROM TABLE 232.1	
NATURE OF SURFACE UNDERNEATH WIRES, CONDUCTORS OR CABLES	LINE VOLTAGE (kV)
ROADS, STREETS AND OTHER AREAS SUBJECT TO TRUCK TRAFFIC	11.5
SPACES AND WAYS SUBJECT TO PEDESTRIAN OR RESTRICTED TRAFFIC ONLY	16.1
WATER AREAS NOT SUITABLE FOR SAIL BOATING OR WHERE SAIL BOATING IS PROHIBITED	18.6



- NOTES:
 1. VERTICAL DATUM IS NAVD88 IN FEET.
 2. COORDINATE SYSTEM IS NEW HAMPSHIRE STATE PLANE NAD 83.
 3. ALL LINE WORK FOR PARCELS FROM NH GRANIT UNLESS NOTED OTHERWISE.

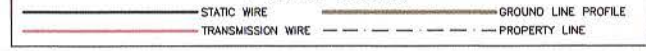
STRUCTURE LOCATION:

STR. #298 - LAT.= 44°24'17.426"N
 LONG.= 71°11'32.264"W
 STR. #299 - LAT.= 44°24'17.674"N
 LONG.= 71°11'25.329"W

CABLE SCHEDULE:

WIRE	# OF CABLES	TYPE	DIA. (IN.)	WEIGHT/1000 FT	CABLE STRENGTH (LBS.)
STATIC	1	7#8 ALUMOWELD	0.385	261.8	15,930
OPGW	1	INCA8 OPGW	0.457	245.0	11,719
TRANSMISSION COND.	3	795 KCMIL 36/1 ACSR COOT	1.040	803.6	16,800

PROFILE LEGEND:



DWG REV	ISSUED TO PIC	DATE	BY	CHKD	APPD
1		03/27/20	SAL	GEL	BRS

EVERSOURCE ENERGY

LINE S136 115KV TRANSMISSION
 ANDROSCOGGIN RIVER RESERVOIR CROSSING
 GORHAM, N.H.
 EXHIBIT #8

SCALE AS SHOWN
 FILE: S13643902.DWG
 DRAWING NO. S13643902

T	I
DESIGN	SAL/TRC
ENGINEER	GEL/TRC
CHECKED	NEB/TRC
APPROVED	GEL/TRC
DATE	06/19/19