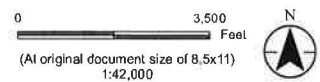


Legend
 (X) Structure
 — Transmission Centerline



Project Location: Randolph, Gorham, NH
 Prepared by REM on 2019-09-19
 TR by KWH on 2019-09-00
 IR Review by BEB on 2019-09-00

Client/Project: Eversource Energy 19560167

S136 Line
 Structure Replacement Project

Figure No. **Exhibit 1, Site Locus Map** **DRAFT**

Title
**Line S136 115kV Transmission,
 State of NH Rail Trail and
 Androscoggin River Crossing**

Notes
 1. Coordinate System: NAD 1983 StatePlane New Hampshire FIPS 2800 Feet
 2. Data Sources: Eversource Energy
 3. Background: USA Topo base map provided by ArcGIS online USA_Topo_Maps (http://server.arcgisonline.com/arcgis/services/USA_Topo_Map/MapServer/)

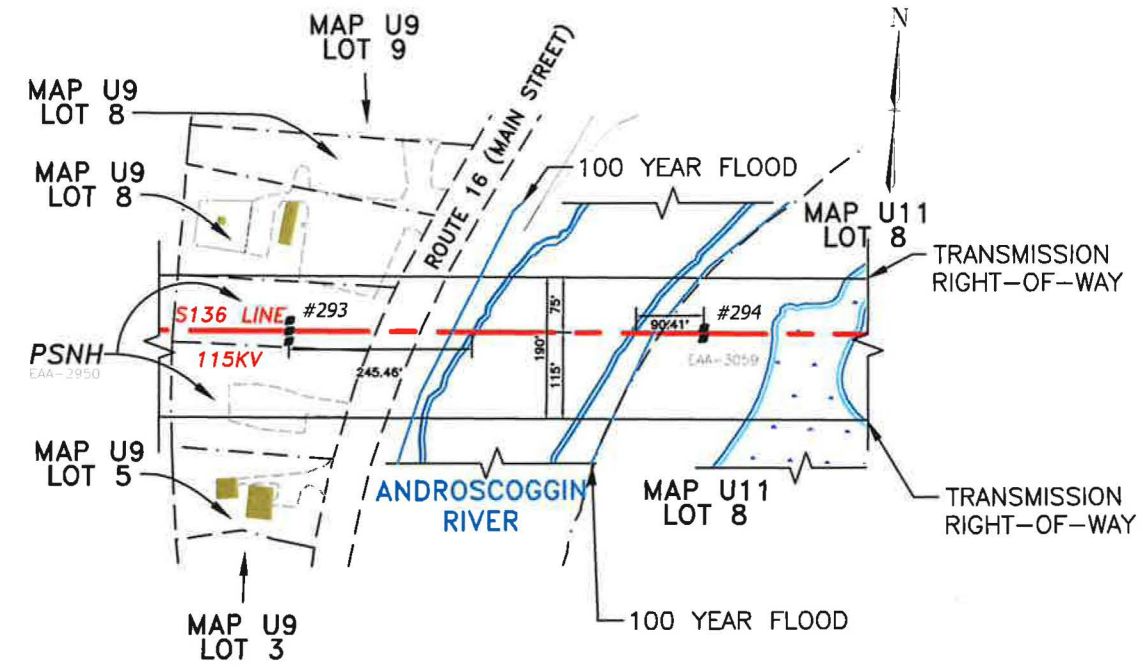
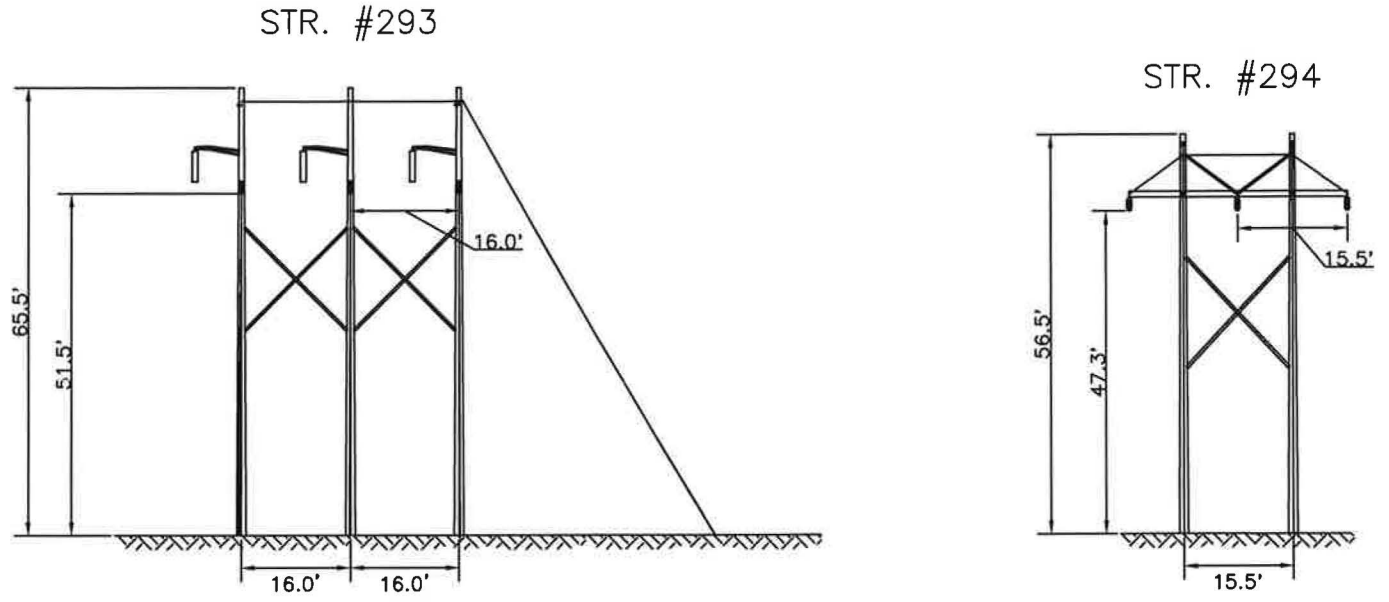
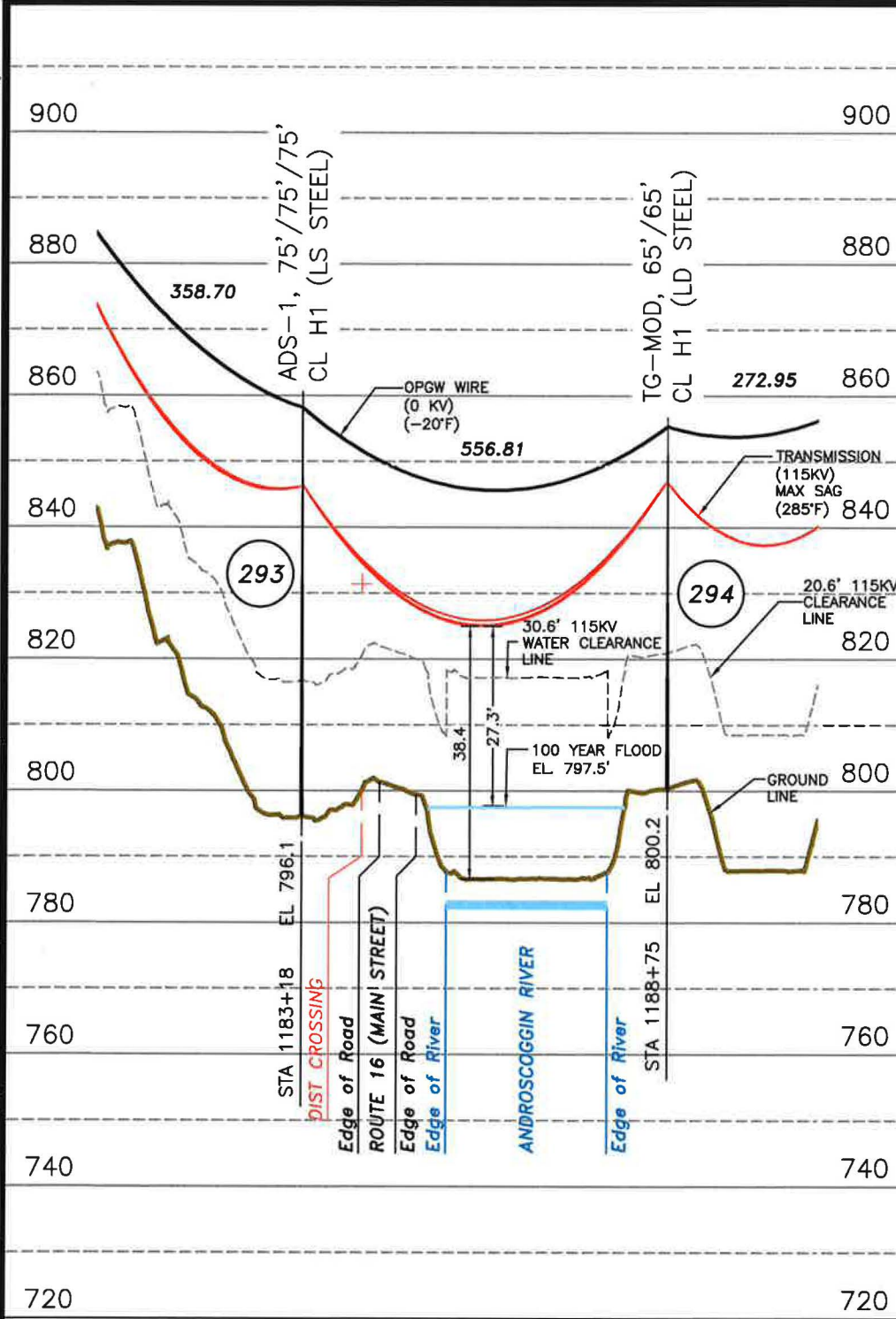
V:\19560167\19560167\GIS\mxd\puc_Peapack\everource_S136_Exhibit1.mxd Revised: 2019-09-23 By: macik

Disclaimer: This document has been prepared based on information provided by others as cited in the Notes section. Stantec has not verified the accuracy and/or completeness of this information and shall not be responsible for any errors or omissions which may be incorporated herein as a result. Stantec assumes no responsibility for data supplied in electronic format, and the recipient accepts full responsibility for verifying the accuracy and completeness of the data.

ES VER: 12/2016

8/18/2019 2:43 PM - Slessard - C:\pwworking\p1\2576959\S13643901-SH02.dwg - S136-SH02

TOWN OF GORHAM N.H.



NOTES:
 1. VERTICAL DATUM IS NAVD88 IN FEET.
 2. COORDINATE SYSTEM IS NEW HAMPSHIRE STATE PLANE NAD 83 US SURVEY FEET.

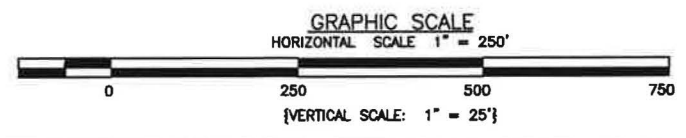
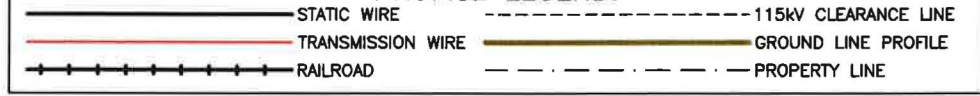
STRUCTURE LOCATION:

STR. #293 - LAT.= 44°24'16.472"N
 LONG.= 71°11'58.839"W
 STR. #294 - LAT.= 44°24'16.747"N
 LONG.= 71°11'51.179"W

CABLE SCHEDULE:

WIRE	# OF CABLES	TYPE	DIA. (IN.)	WEIGHT/1000 FT	CABLE STRENGTH (LBS.)
OPGW	2	AFL OPGW DNO-4963	0.457	245.0	11,719
TRANSMISSION COND.	3	795 KCM 36/1 ACSR COOT	1.040	804.7	16,800

PROFILE LEGEND:



LINE S136 115KV TRANSMISSION
 ANDROSCOGGIN RIVER WATERBODY CROSSING
 GORHAM N.H.
 EXHIBIT #2

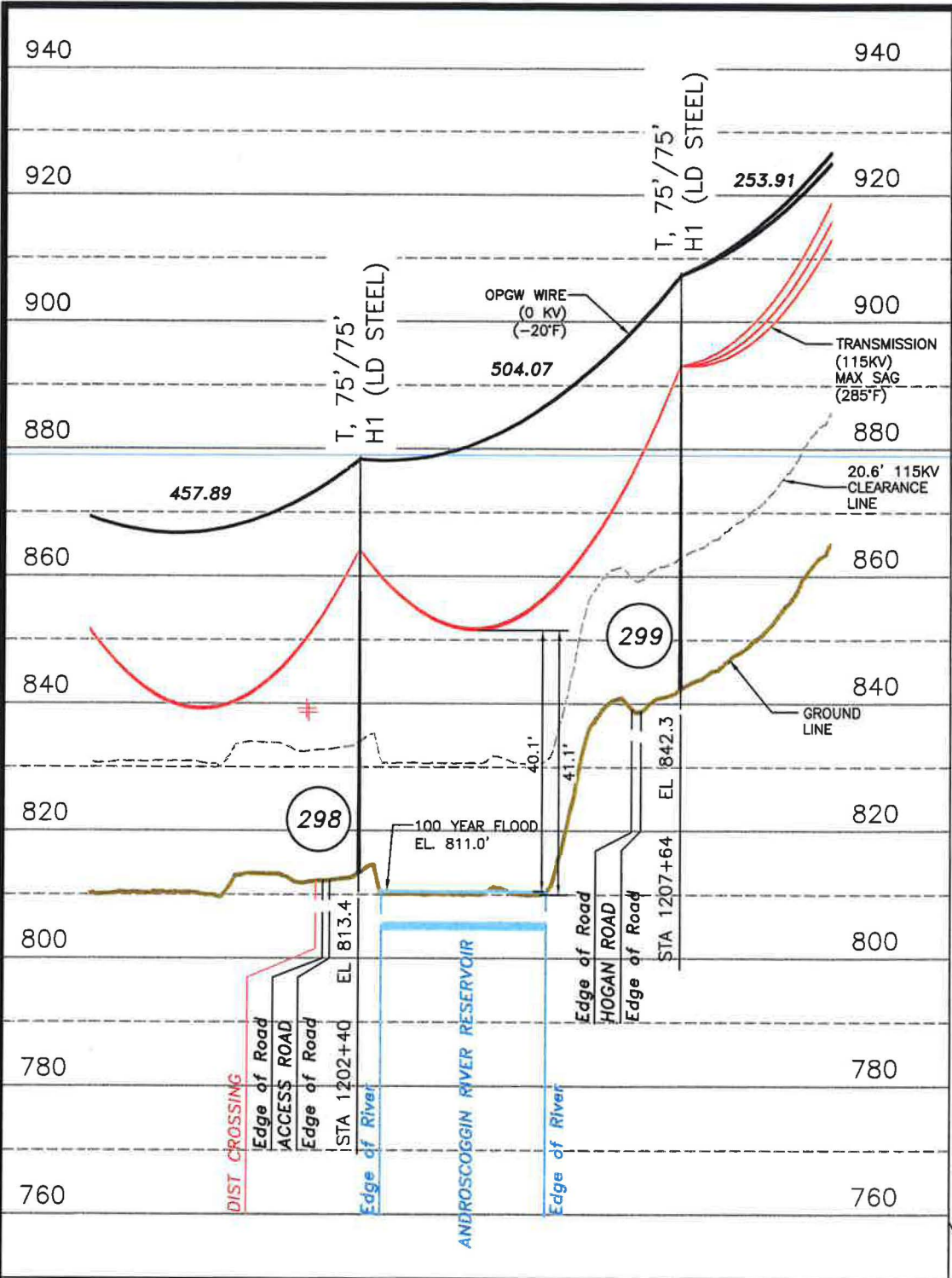
T	B
DRAWN	SAL/TRC
ENGINEER	GEL/TRC
CHECKED	NEB/TRC
APPROVED	GEL/TRC
DATE	06/18/19

DWG REV	ISSUED FOR USE	ISSUED FOR REVIEW	CONT/PE	DATE	DRN	CHKD	APPR
B	ISSUED FOR USE			06/18/19	SAL	NEB	GEL
A	ISSUED FOR REVIEW			07/12/16	SAL	NEB	GEL

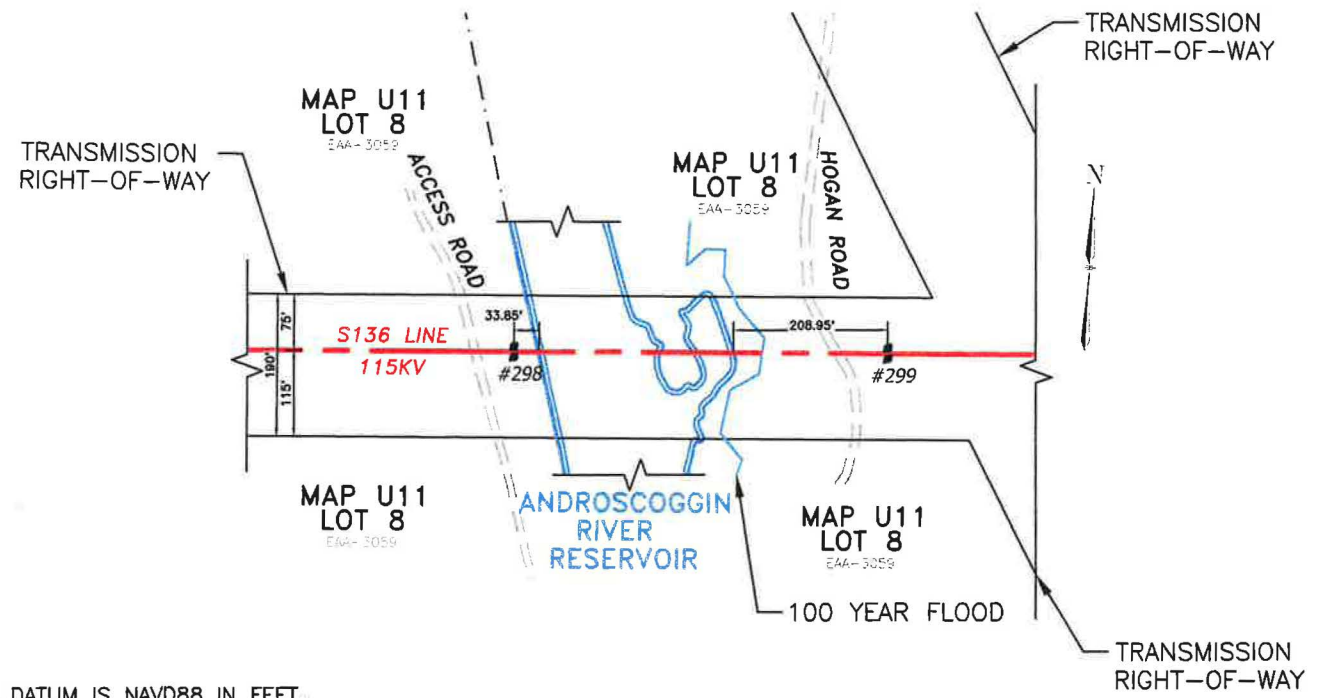
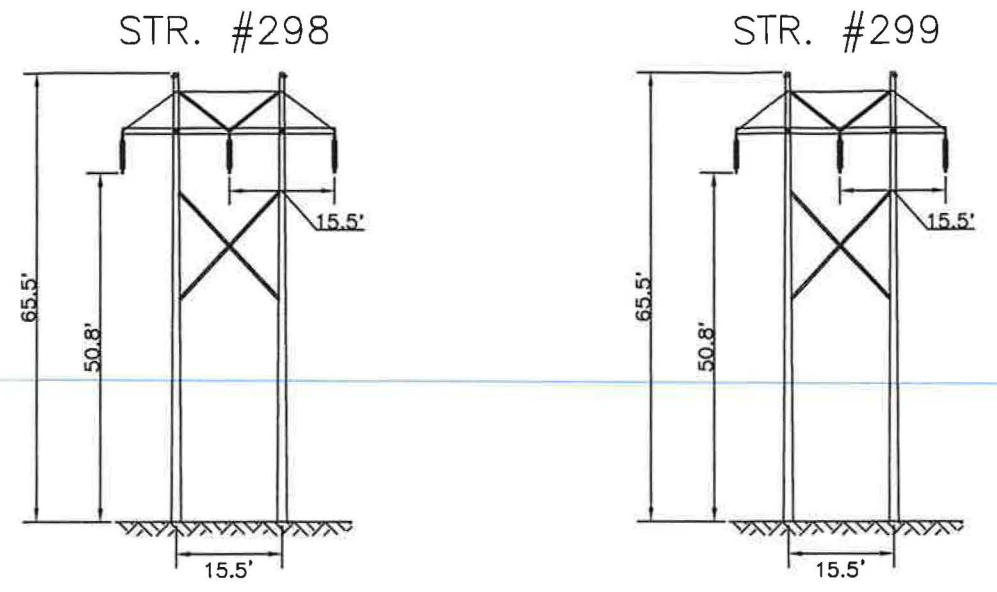
SCALE AS SHOWN
 FILE: S13643901-SH02.DWG
 DRAWING NO. S13643901-SH02

ES VER: 12/2016

9/23/2019 3:13 PM - Slessard - C:\pwworkingmp\pw1\d2576959\S13643901-SH03.dwg - S136-SH03



TOWN OF GORHAM N.H.



NOTES:
 1. VERTICAL DATUM IS NAVD88 IN FEET.
 2. COORDINATE SYSTEM IS NEW HAMPSHIRE STATE PLANE NAD 83 US SURVEY FEET.

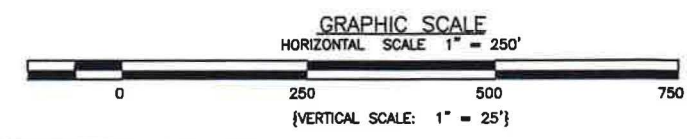
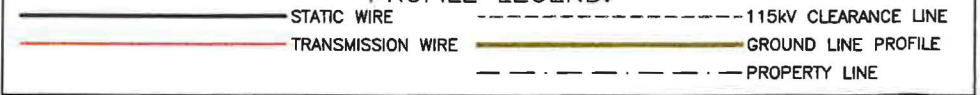
STRUCTURE LOCATION:

STR. #298 - LAT.= 44°24'17.426"N
 LONG.= 71°11'32.264"W
 STR. #299 - LAT.= 44°24'17.674"N
 LONG.= 71°11'25.329"W

CABLE SCHEDULE:

WIRE	# OF CABLES	TYPE	DIA. (IN.)	WEIGHT/1000 FT	CABLE STRENGTH (LBS.)
OPGW	2	AFL OPGW DNO-4963	0.457	245.8	11,719
TRANSMISSION COND.	3	795 KCM 36/1 ACSR COOT	1.040	804.7	16,800

PROFILE LEGEND:



DWG REV	EPN/DESCRIPTION	CONT/PE#	DATE	DRN	CHKD	APPR
1	RE-ISSUED FOR USE		09/26/19	SAL	NEB	GEL
0	ISSUED FOR USE		08/16/19	SAL	NEB	GEL
A	ISSUED FOR REVIEW		07/12/19	SAL	NEB	GEL

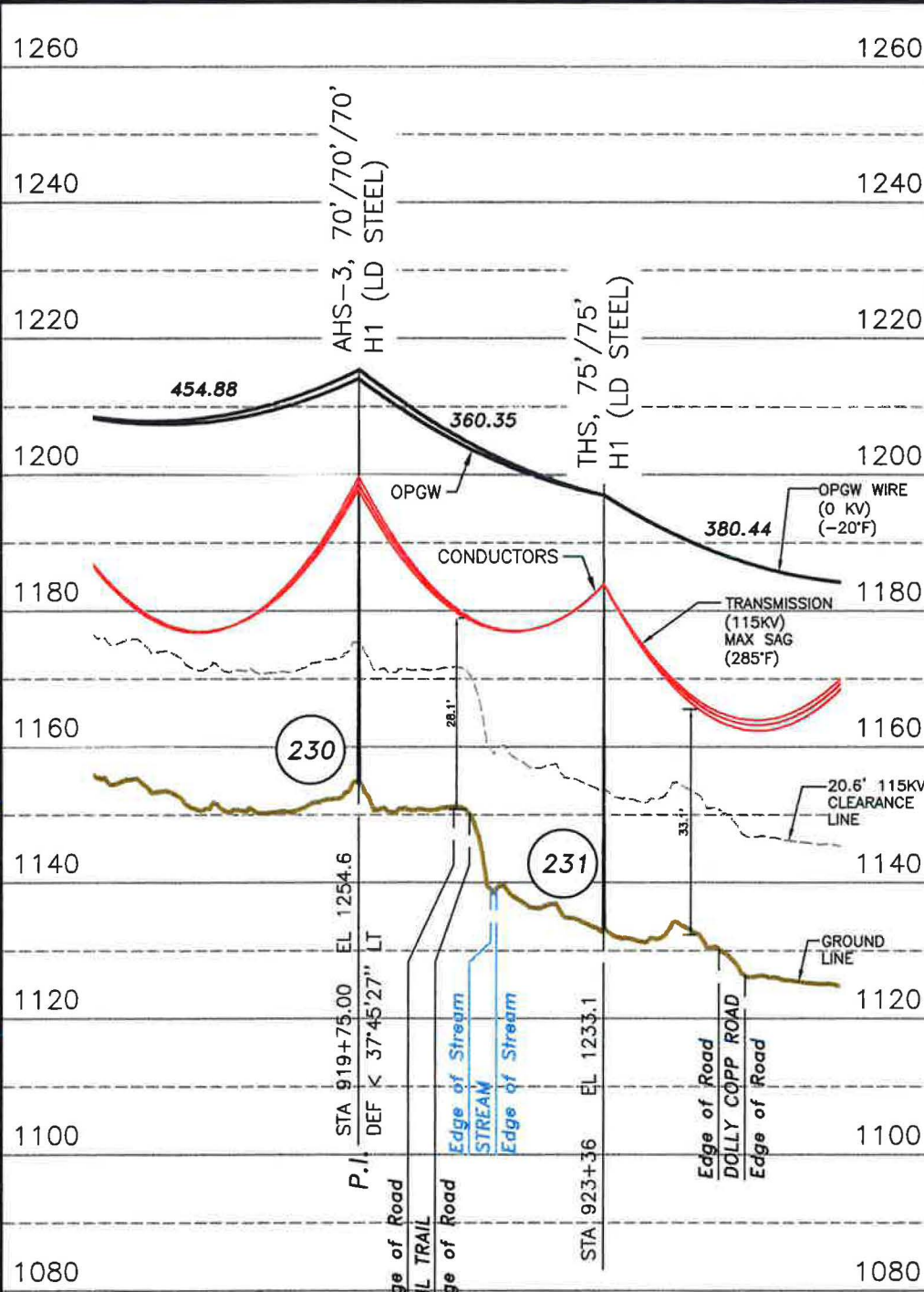
EVERSOURCE ENERGY

LINE S136 115KV TRANSMISSION
 ANDROSCOGGIN RIVER RESERVOIR CROSSING
 GORHAM N.H.
 EXHIBIT #3

SCALE: AS SHOWN
 FILE: S13643901-SH03.DWG
 DRAWING NO.: S13643901-SH03

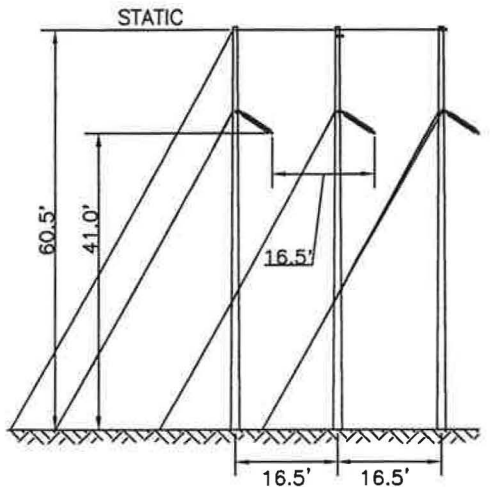
T	1
DRAWN	SAL/TRC
ENGINEER	GEL/TRC
CHECKED	NEB/TRC
APPROVED	GEL/TRC
DATE	06/19/19

9/24/2019 2:01 PM - Slessard - C:\pwworkingmp\pw1\d2576959\S13643901-SH04.DWG - S136-SH04
 ES VER: 12/2016

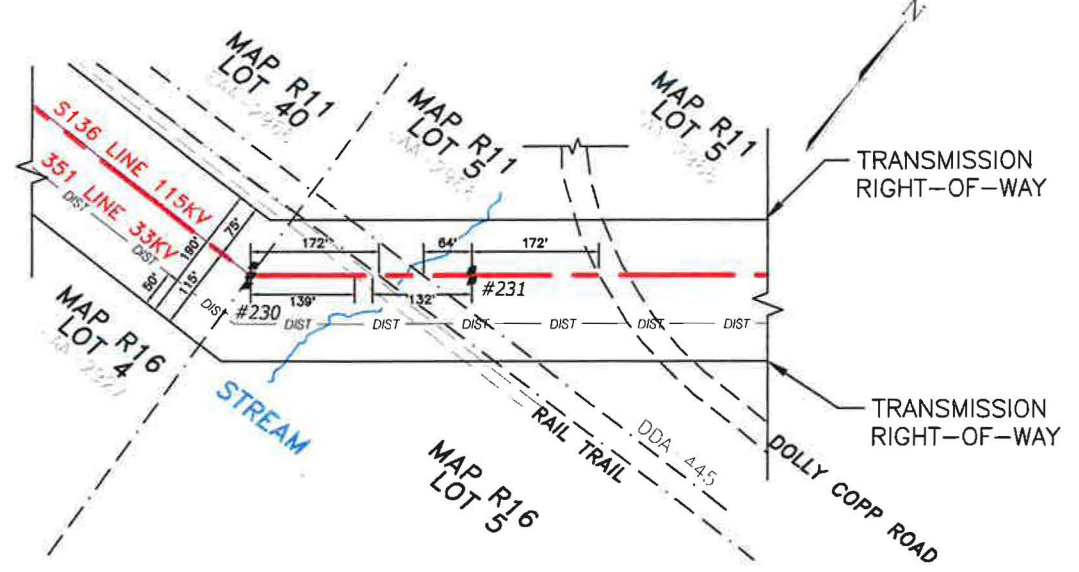
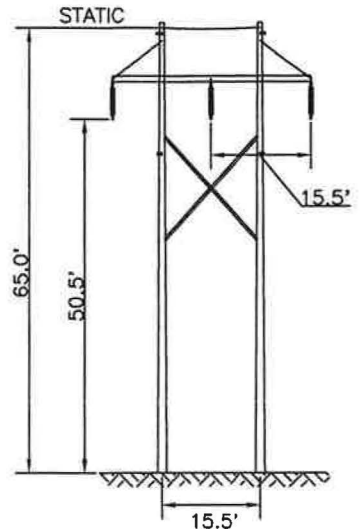


TOWN OF RANDOLPH N.H.

STR. #230



STR. #231



- NOTES:
1. VERTICAL DATUM IS NAVD88 IN FEET.
 2. COORDINATE SYSTEM IS NEW HAMPSHIRE STATE PLANE NAD 83 US SURVEY FEET.

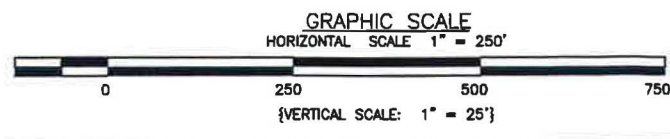
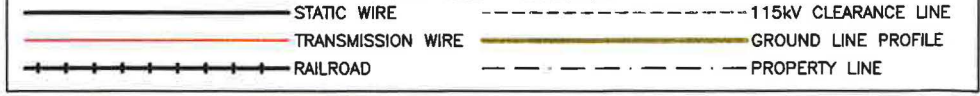
STRUCTURE LOCATION:

STR. #230 - LAT.= 44°22'14.903"N
 LONG.= 71°16'22.701"W
 STR. #231 - LAT.= 44°22'17.029"N
 LONG.= 71°16'18.723"W

CABLE SCHEDULE:

WIRE	# OF CABLES	TYPE	DIA. (IN.)	WEIGHT/1000 FT	CABLE STRENGTH (LBS.)
OPGW	2	AFL OPGW DNO-4963	0.457	245.0	11,719
TRANSMISSION COND.	3	795 KCM 36/1 ACSR COOT	1.040	804.7	16,800

PROFILE LEGEND:



LINE S136 115KV TRANSMISSION
 STATE LAND CROSSING
 RANDOLPH N.H.
 EXHIBIT #4

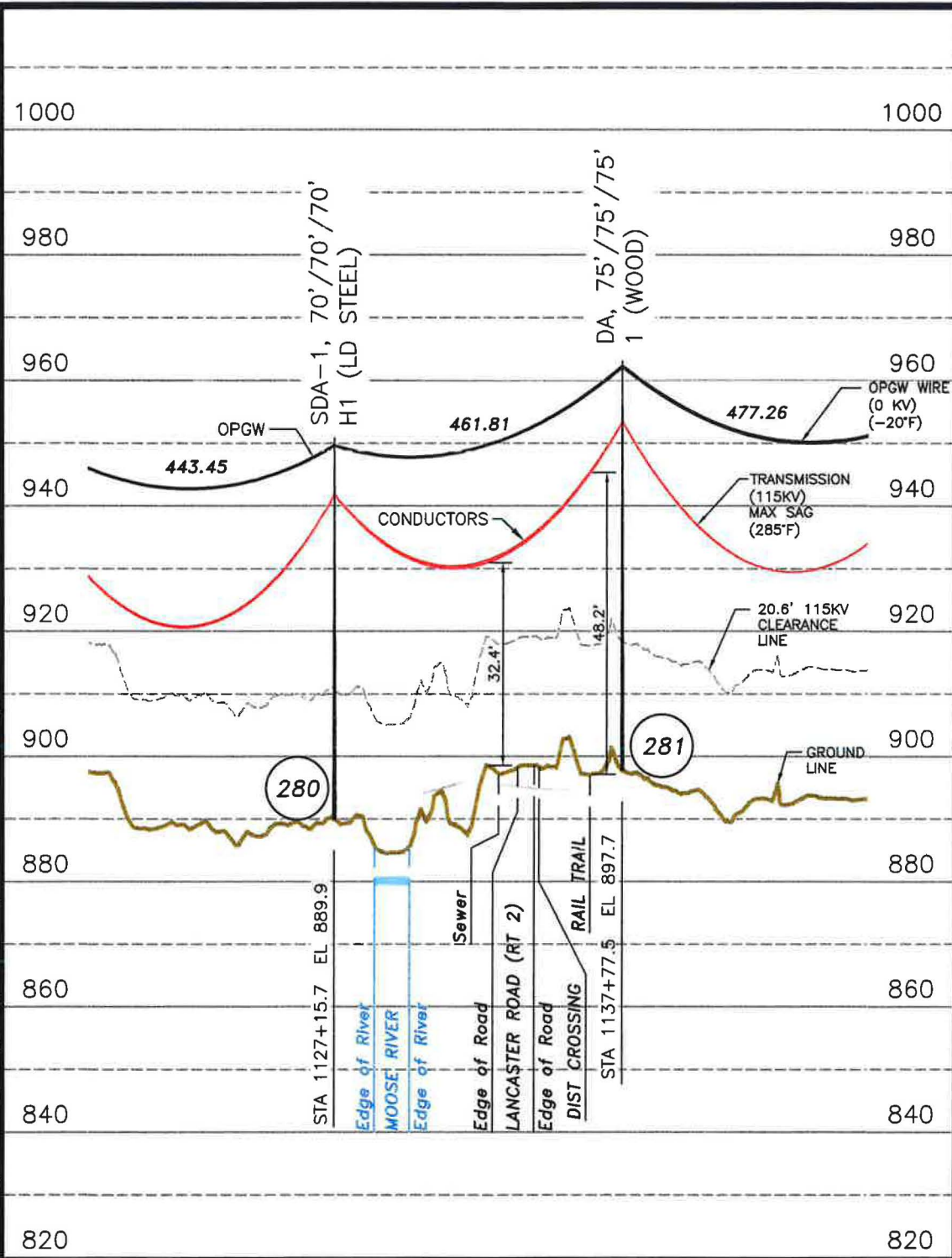
T	0
DRAWN	DRL/TRC
ENGINEER	GEL/TRC
CHECKED	SAL/TRC
APPROVED	GEL/TRC
DATE	08/06/19

DWG REV	EPN/DESCRIPTION	CONT/PE#	DATE	DRN	CHKD	APPR
0	ISSUED FOR USE		09/28/19	SAL	NEB	GEL
A	ISSUED FOR REVIEW		08/16/19	DRL	SAL	GEL

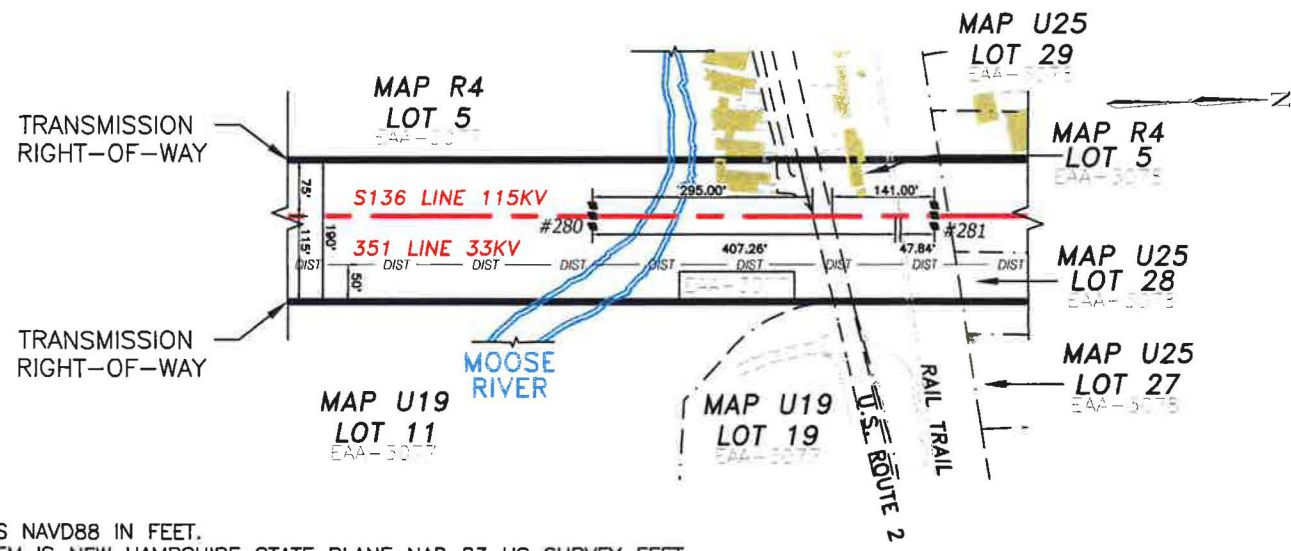
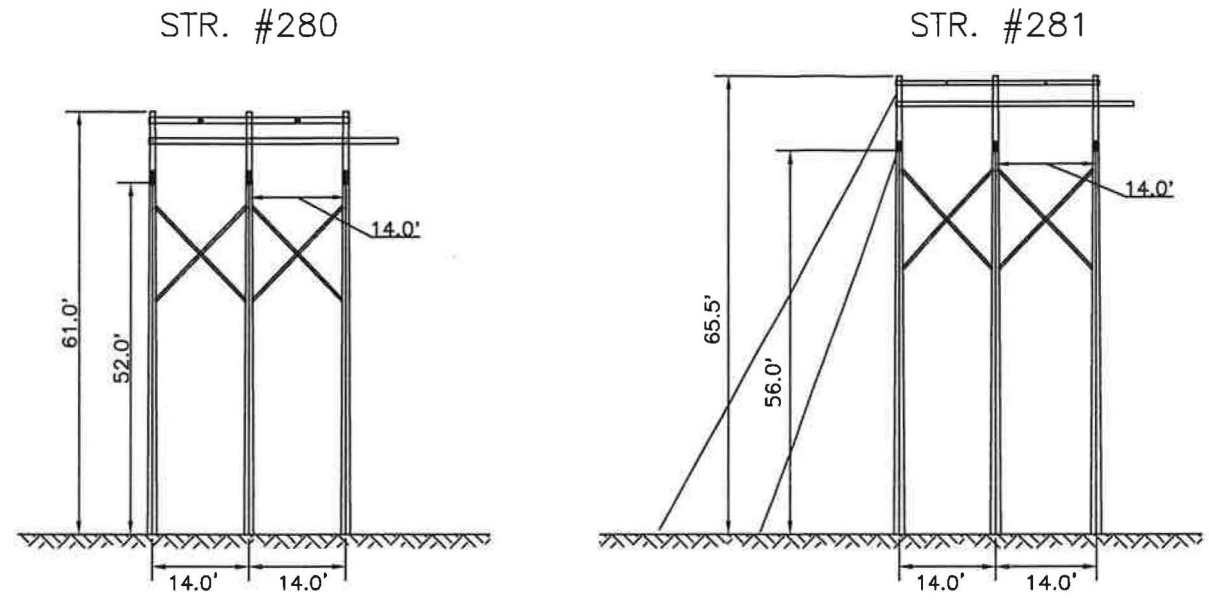
SCALE AS SHOWN
 FILE: S13643901-SH04.DWG
 DRAWING NO. S13643901-SH04

ES VER: 12/2016

9/23/2019 4:24 PM - Slessard - C:\pwworking\p1\d2576959\S13643901-SH06.dwg - S136-SH07



TOWN OF GORHAM N.H.



NOTES:
 1. VERTICAL DATUM IS NAVD88 IN FEET.
 2. COORDINATE SYSTEM IS NEW HAMPSHIRE STATE PLANE NAD 83 US SURVEY FEET.

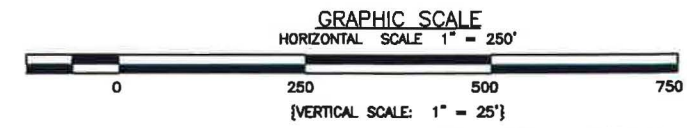
STRUCTURE LOCATION:

STR. #280 - LAT.= 44°23'55.892"N
 LONG.= 71°12'50.888"W
 STR. #281 - LAT.= 44°24'04.50"N
 LONG.= 71°12'50.695"W

CABLE SCHEDULE:

WIRE	# OF CABLES	TYPE	DIA. (IN.)	WEIGHT/1000 FT	CABLE STRENGTH (LBS.)
OPGW	2	AFL OPGW DNO-4963	0.457	245.0	11,719
TRANSMISSION COND.	3	795 KCM 36/1 ACSR COOT	1.040	804.7	16,800

PROFILE LEGEND:



DWG	REV	EPN/DESCRIPTION	DATE	DRN	CHKD	APPR
0		ISSUED FOR USE	09/26/19	SAL	NEB	GEL
A		ISSUED FOR REVIEW	08/06/19	DRL	SAL	GEL

EVERSOURCE ENERGY

LINE S136 115KV TRANSMISSION
 STATE LAND CROSSING
 GORHAM N.H.
 EXHIBIT #6

SCALE: AS SHOWN
 FILE: S13643901-SH06.DWG
 DRAWING NO.: S13643901-SH06

T	0
DRAWN	DRL/TRC
ENGINEER	GEL/TRC
CHECKED	SAL/TRC
APPROVED	GEL/TRC
DATE	08/06/19