

Eversource 115-kV and 345-kV Structure Replacement Projects

TCA Submittal Presentation

NEPOOL Reliability Committee Meeting

September 20, 2022

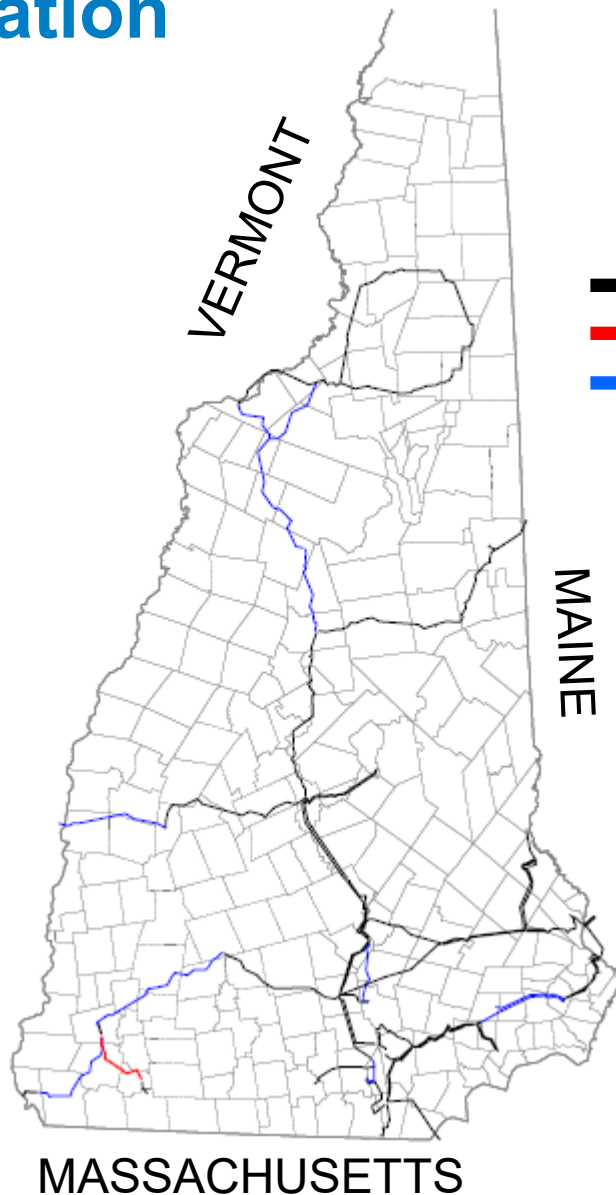
Agenda

- Project Background
- Project Geographic Locations
- Summary of Work

Project Background

- This presentation covers wood pole and associated shield wire replacement projects on Eversource's 115-kV and 345-kV lines which were presented at the [December 2021 PAC](#) meeting. The projects include 8 lines across the NH, MA, and CT territories.
- Project Drivers
 - Wood Pole – Asset Condition Replacement
 - Shield Wire – Asset Condition Replacement
 - OPGW
- Inspections have indicated significant degradation and decreased load carrying capacity of wood structures. Replacing the structures with light duty steel pole equivalents resolves multiple structural issues, hardware issues, and supports safe and reliable operation.
- Existing Copperweld shield wire is obsolete and susceptible to failure due to degradation from environmental factors

New Hampshire 115-kV Geographic Location

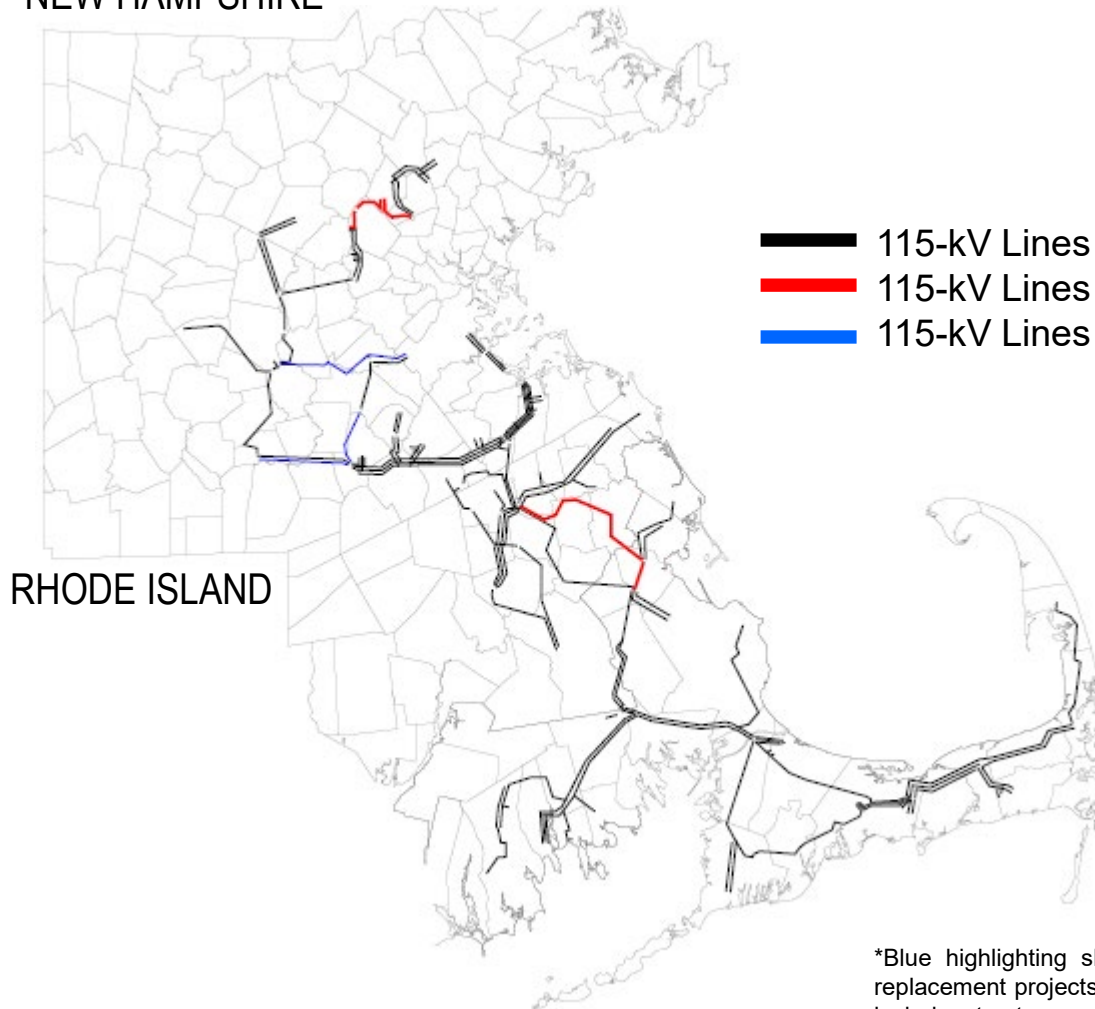


- 115-kV Lines Not in Scope
- 115-kV Lines with Structure Replacements
- 115-kV Lines with Previous Structure Replacements*

*Blue highlighting shows general location of round wood structure replacement projects previously presented to PAC. Other projects that include structure replacements, such as line rebuilds and regional reliability projects, are not shown.

Eastern Massachusetts 115-kV Geographic Locations

NEW HAMPSHIRE



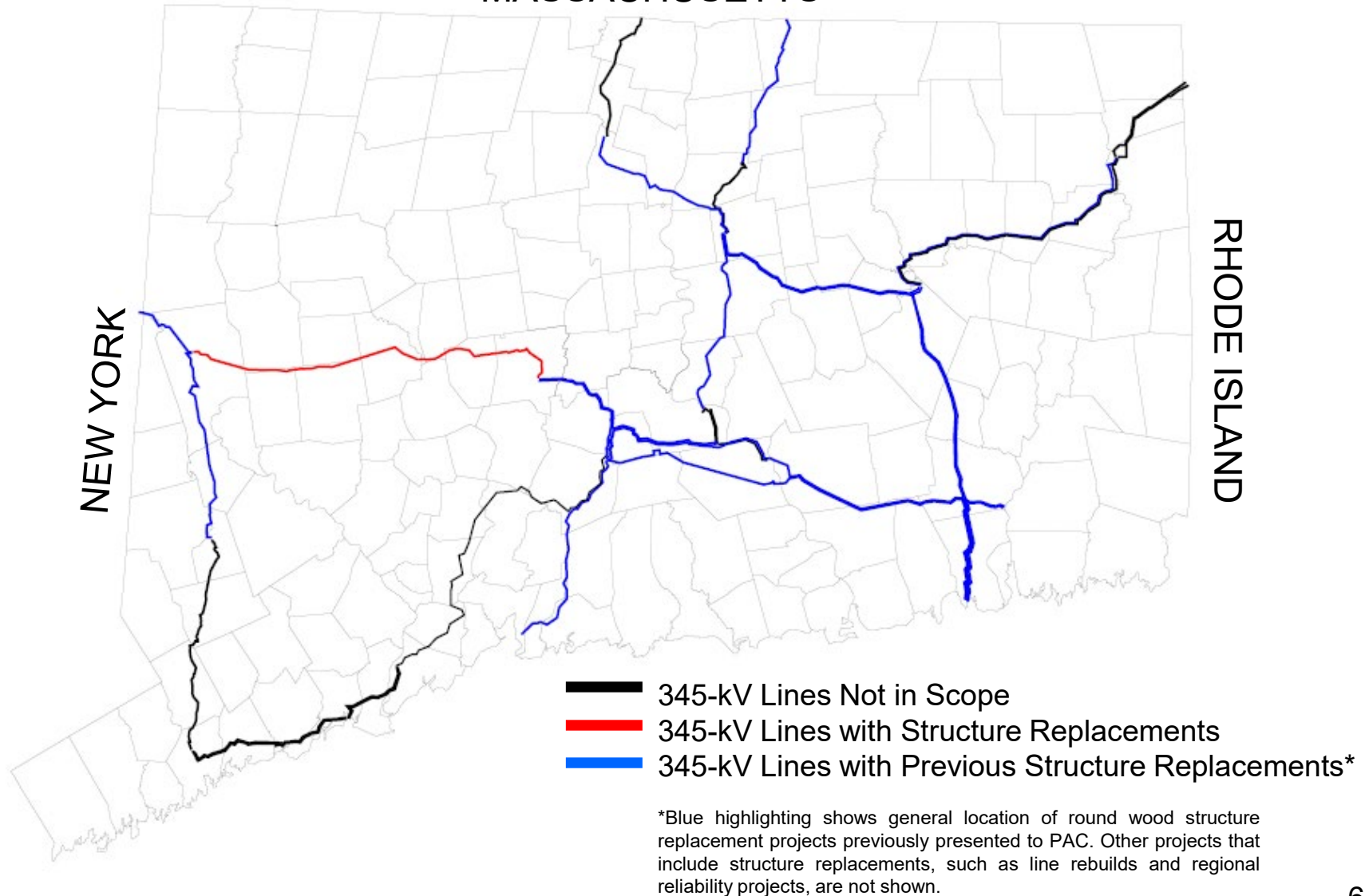
- 115-kV Lines Not in Scope
- 115-kV Lines with Structure Replacements
- 115-kV Lines with Previous Structure Replacements*

RHODE ISLAND

*Blue highlighting shows general location of round wood structure replacement projects previously presented to PAC. Other projects that include structure replacements, such as line rebuilds and regional reliability projects, are not shown.

Connecticut 345-kV Geographic Location

MASSACHUSETTS



115-kV and 345-kV Lines Summary – TCAs

115-kV and 345-kV Structure Replacements <i>Presented to ISO-NE PAC December 15, 2021</i>				
Location	Line	TCA #	Description	TCA Submitted Cost (\$Ms)
NH	T198*	ES-22-TCA-06	Monadnock substation - Emerald St. substation	\$ 19.113
MA	191*	ES-22-TCA-13	Auburn St. substation - Kingston substation	27.840
MA	117*	ES-22-TCA-12	Brook St. substation - Kingston substation	5.880
MA	211-508	ES-22-TCA-09	Burlington substation - Woburn Ring substation	5.800
MA	391-508	ES-22-TCA-10	Burlington substation - Hartwell substation	5.000
MA	533-508	ES-22-TCA-11	Hartwell substation - Lexington substation	5.000
CT	329 [†]	ES-21-TCA-52	Frost Bridge substation - Southington substation	6.242
CT	352 [†]	ES-22-TCA-02	Frost Bridge substation - Long Mountain substation	5.782
Total submitted TCA cost estimate				\$ 80.657

[†] 345-kV Line

* Scope Includes Installation of Replacement Shield Wire

Questions

