

Eversource Laminated Wood Structure (LWS) Replacement Program Phase II Projects

TCA Submittal Presentation

NEPOOL Reliability Committee Meeting

February 22, 2023

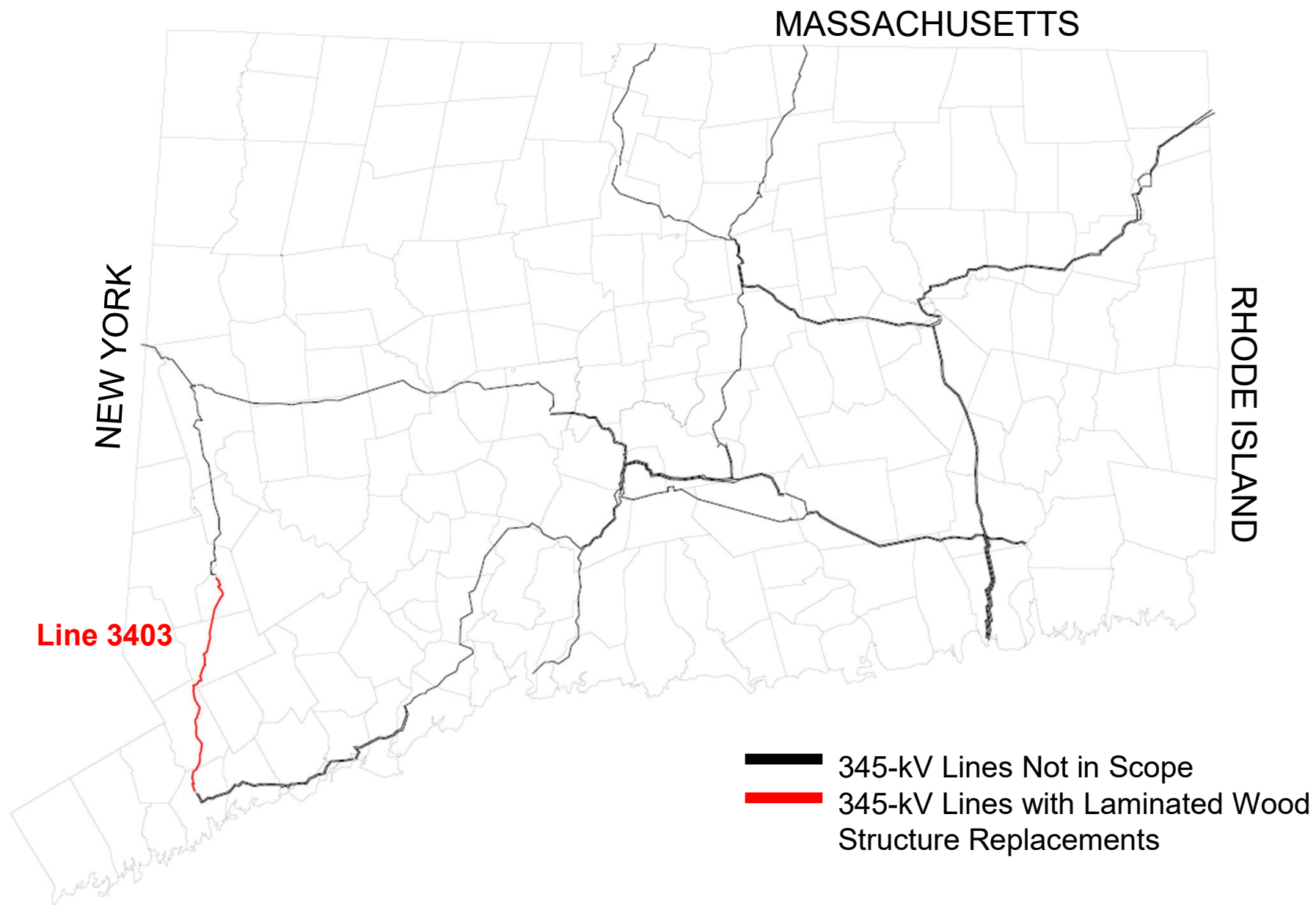
Agenda

- Project Background
- Project Geographic Locations
- Project Need
- Summary of Work

Project Background

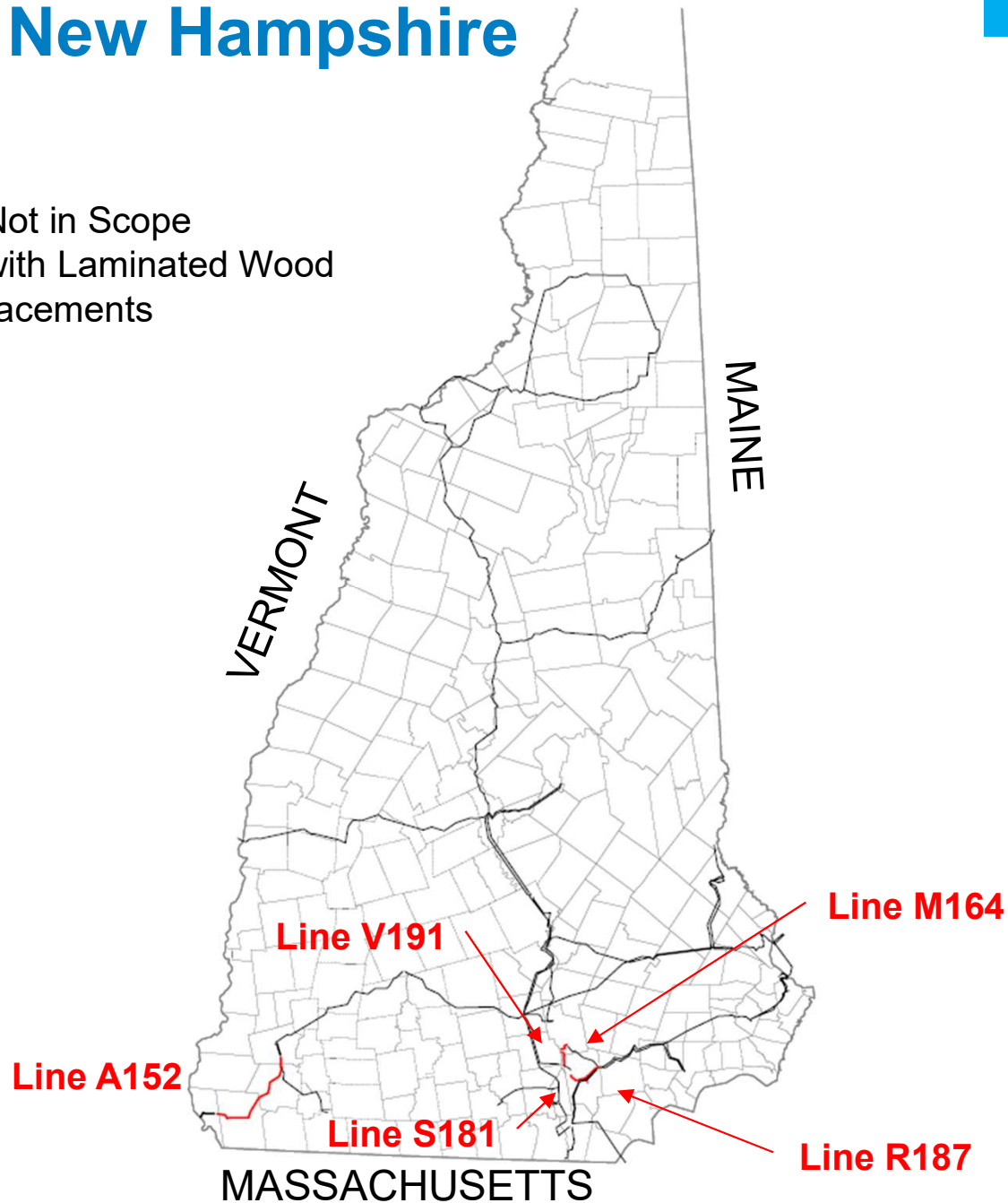
- This presentation covers laminated wood structure replacement projects on Eversource's 115-kV and 345-kV lines which were presented at the [October 20, 2021, PAC meeting](#)
 - Including 6 lines in Eversource's Connecticut and New Hampshire service territories
- Project Drivers
 - Inspections have indicated significant degradation and decreased load carrying capacity of laminated wood structures
 - The softened wood is prone to woodpecker and insect damage
 - Poles are susceptible to cracking along their length, creating points of entry for water leading to internal rot
 - Cross-sectional inspections of recently-removed laminated wood structures have uncovered significant structural damage that was not detected in previous visual inspections
 - Replacing the structures with weathering steel monopole equivalents resolves multiple structural issues, hardware issues, and supports safe and reliable operation

Laminated Wood Structure Geographic Locations - Connecticut



Laminated Wood Structure Geographic Locations – New Hampshire

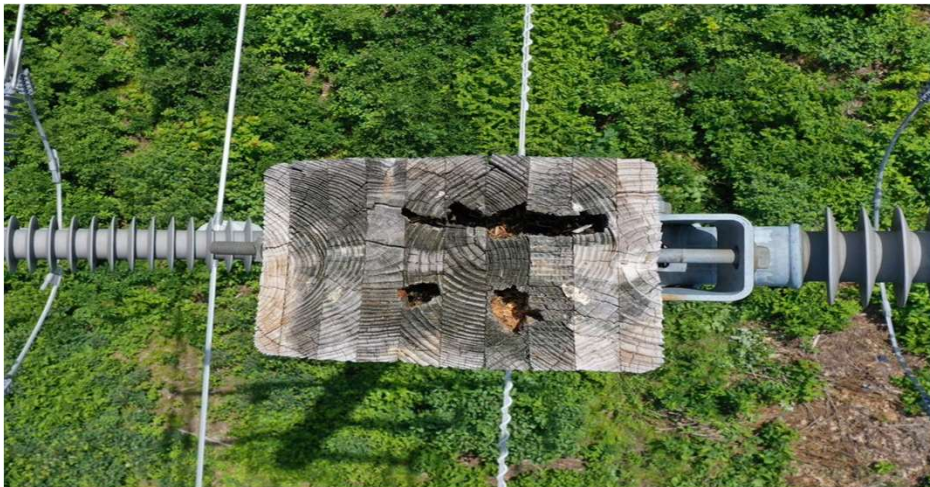
- 115-kV Lines Not in Scope
- 115-kV Lines with Laminated Wood Structure Replacements



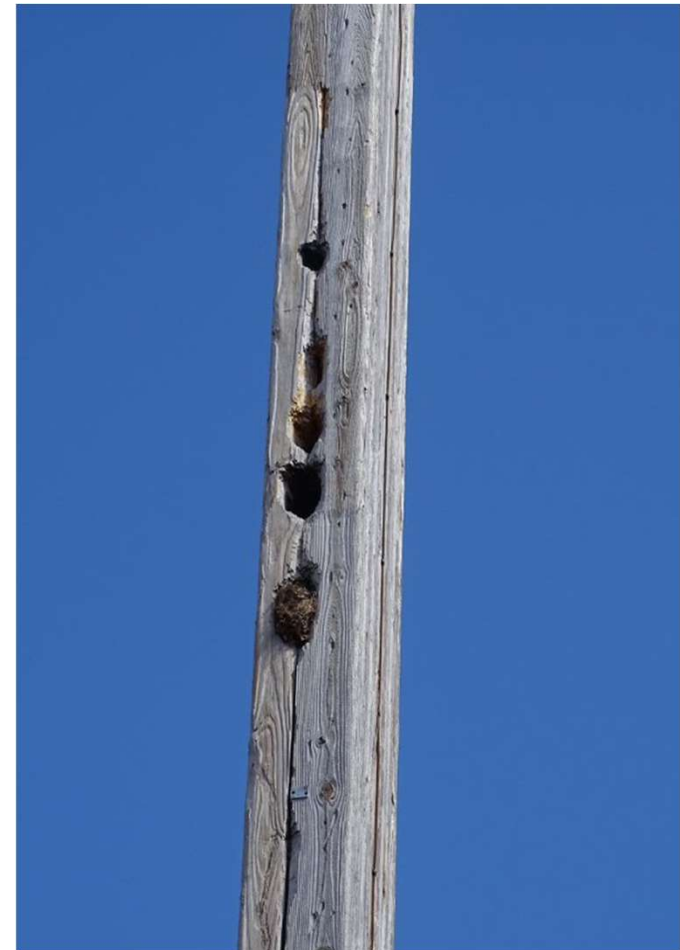
Project Need



Cracking Laminate Structure –
V191 Line, Structure #47



Pole Top Rot –
M164 Line, Structure #26



Woodpecker Damage and Cracking –
S188 Line, Structure #52

Laminated Wood Structure (LWS) Phase II Summary – TCAs

Laminated Wood Structure Replacement Program Phase II

***Presented to ISO-NE PAC October 20, 2021*

Location	Line	Voltage	TCA #	ACL#	Location	TCA (\$M)
CT	3403	345	ES-22-TCA-34	312	Plumtree substation - Norwalk substation	\$ 12.091
NH	R187	115	ES-21-TCA-59	325	Mammoth Road substation - Scobie Pond substation	7.541
NH	S188	115	ES-21-TCA-56	326	Watts Brook substation – Mammoth Rd substation	7.342
NH	M164	115	ES-21-TCA-47	327	Bedford substation – Huse Rd. substation	6.024
NH	A152	115	ES-22-TCA-05	321	Chestnut Hill substation – Emerald St. substation	17.476
NH	V191	115	ES-22-TCA-14	322	Bedford substation - North Merrimack substation	10.114
Total submitted TCA cost estimate						\$ 60.588

Questions

