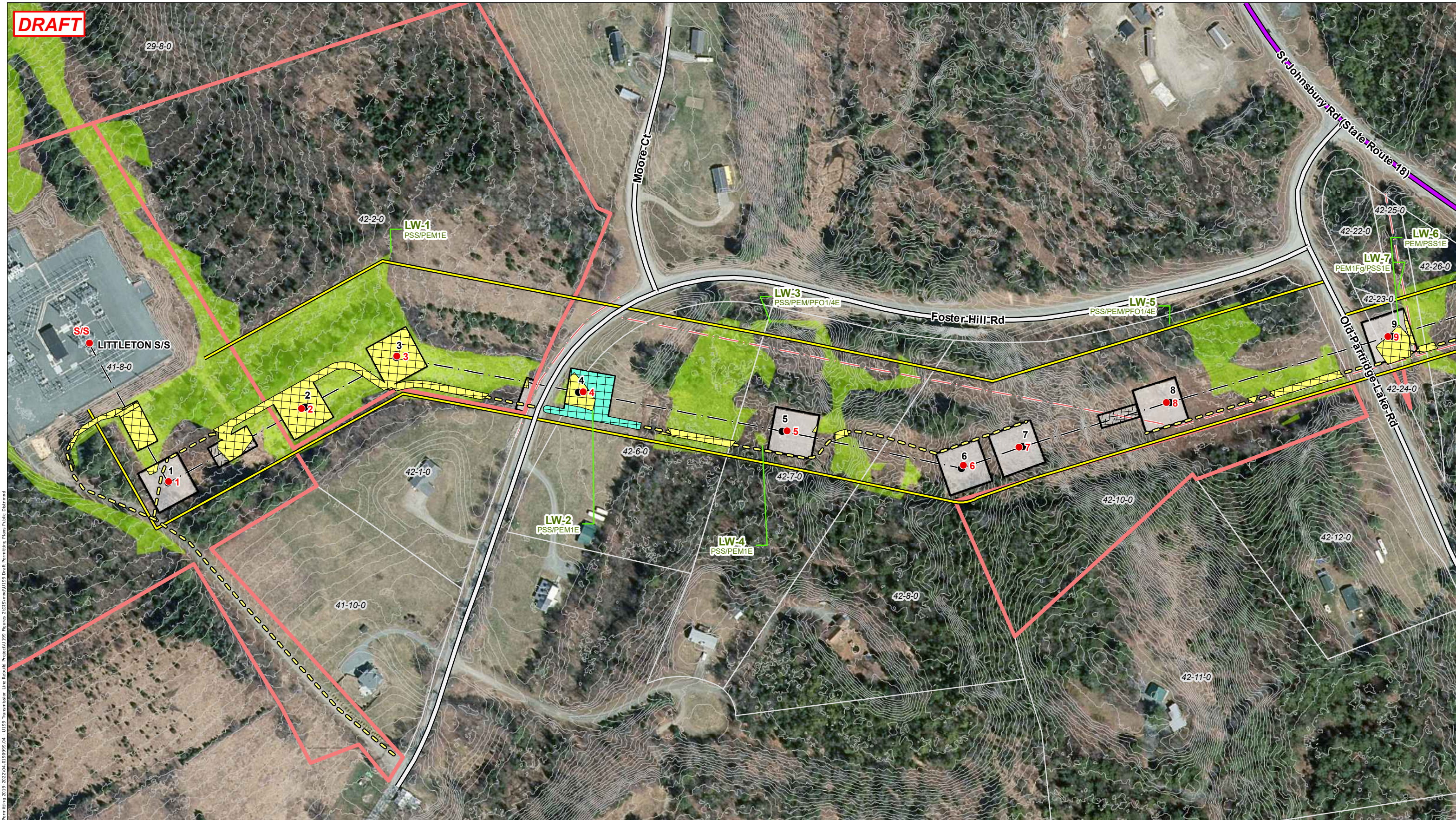
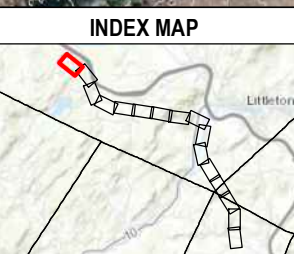


DRAFT



Path: P:\Jobs\19190905\04.01.19\19190905_00 - EE Siting Permitting 2019 - 2022\04.01.19\19190905_04 - U199 Transmission Line Rebuild Project\19190905_04 - U199 Draft Permitting Plans Public Decided.mxd



● PROPOSED STRUCTURES	— TRANSMISSION LINE ROW	▭ TOWN BOUNDARY	— PROPOSED ACCESS
● EXISTING STRUCTURE	— TOWN MAINTAINED ROAD	▭ PEATLAND HABITAT	▭ PULL PADS
- - - DISTRIBUTION LINE	— NHDOT ROAD	▭ VEGETATED WETLAND	▭ WORK PAD
×-×- FENCE	▭ PARCEL BOUNDARY	▭ OPEN WATER WETLAND	- - - TRANSMISSION LINE
▭ UPLAND MATTING	▭ EVERSOURCE OWNED PARCEL	— RAILROAD	▭ GATES
▭ TEMPORARY WETLAND MATTING	▭ STATE OWNED PARCEL	— 2FT ELEVATION CONTOURS	→ NHD FLOWLINES

This mapping product has been created to comply with submittal requirements to obtain certain regulatory approvals and, as such, there is no reliance on the information contained herein for any other purpose.

1 inch = 200 feet

0 50 100 200 Feet

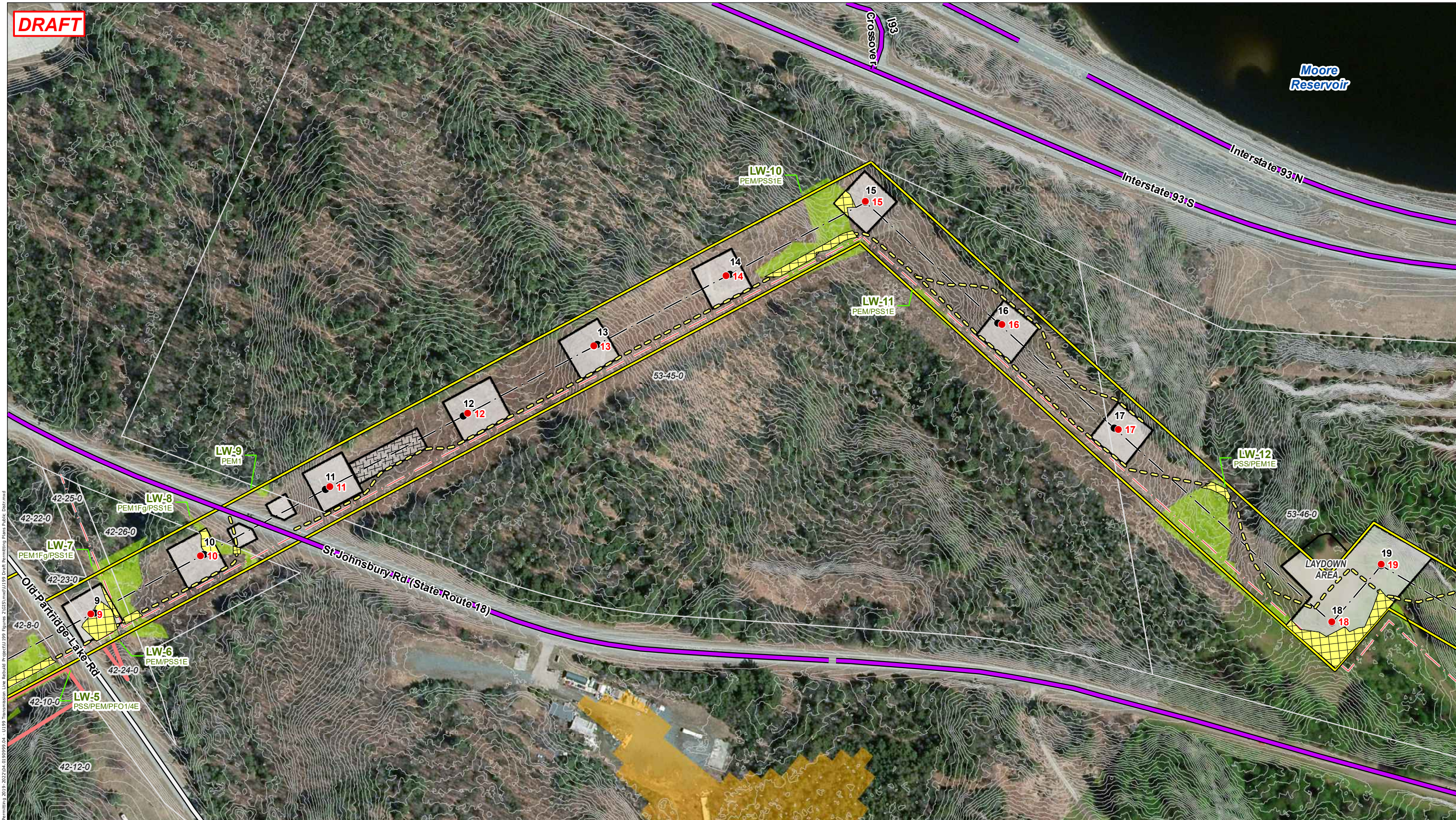
NO.	DATE	REVISIONS

EVERSOURCE ENERGY
U199 Transmission Line Rebuild and OPGW Project

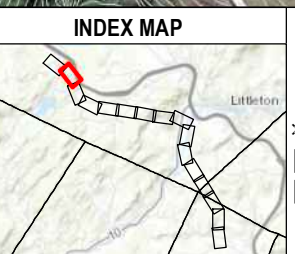
Littleton, NH	MAP SHEET
Date: October, 2023	1 OF 16
04.0191410.12	

DRAFT

Moore Reservoir



Path: P:\Jobs\1919000\04.01.19\191919.dwg - E:\Siting\Permitting\2019-2022\04.01.19\191919.dwg - 01919 Transmission Line Rebuild Project\191919.dwg - 01919 Draft Permitting Plans Public Decided



● PROPOSED STRUCTURES	— TRANSMISSION LINE ROW	— TOWN BOUNDARY	— PROPOSED ACCESS
● EXISTING STRUCTURE	— TOWN MAINTAINED ROAD	— PEATLAND HABITAT	— PULL PADS
— DISTRIBUTION LINE	— NHDOT ROAD	— VEGETATED WETLAND	— WORK PAD
— FENCE	— PARCEL BOUNDARY	— OPEN WATER WETLAND	— TRANSMISSION LINE
— UPLAND MATTING	— EVERSOURCE OWNED PARCEL	— RAILROAD	— GATES
— TEMPORARY WETLAND MATTING	— STATE OWNED PARCEL	— 2FT ELEVATION CONTOURS	— NHD FLOWLINES

This mapping product has been created to comply with submittal requirements to obtain certain regulatory approvals and, as such, there is no reliance on the information contained herein for any other purpose.

1 inch = 200 feet

0 50 100 200 Feet

NO.	DATE	REVISIONS

EVERSOURCE ENERGY

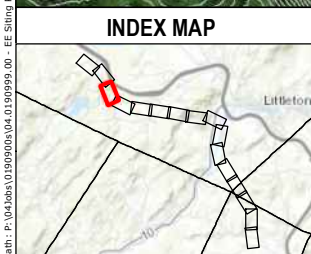
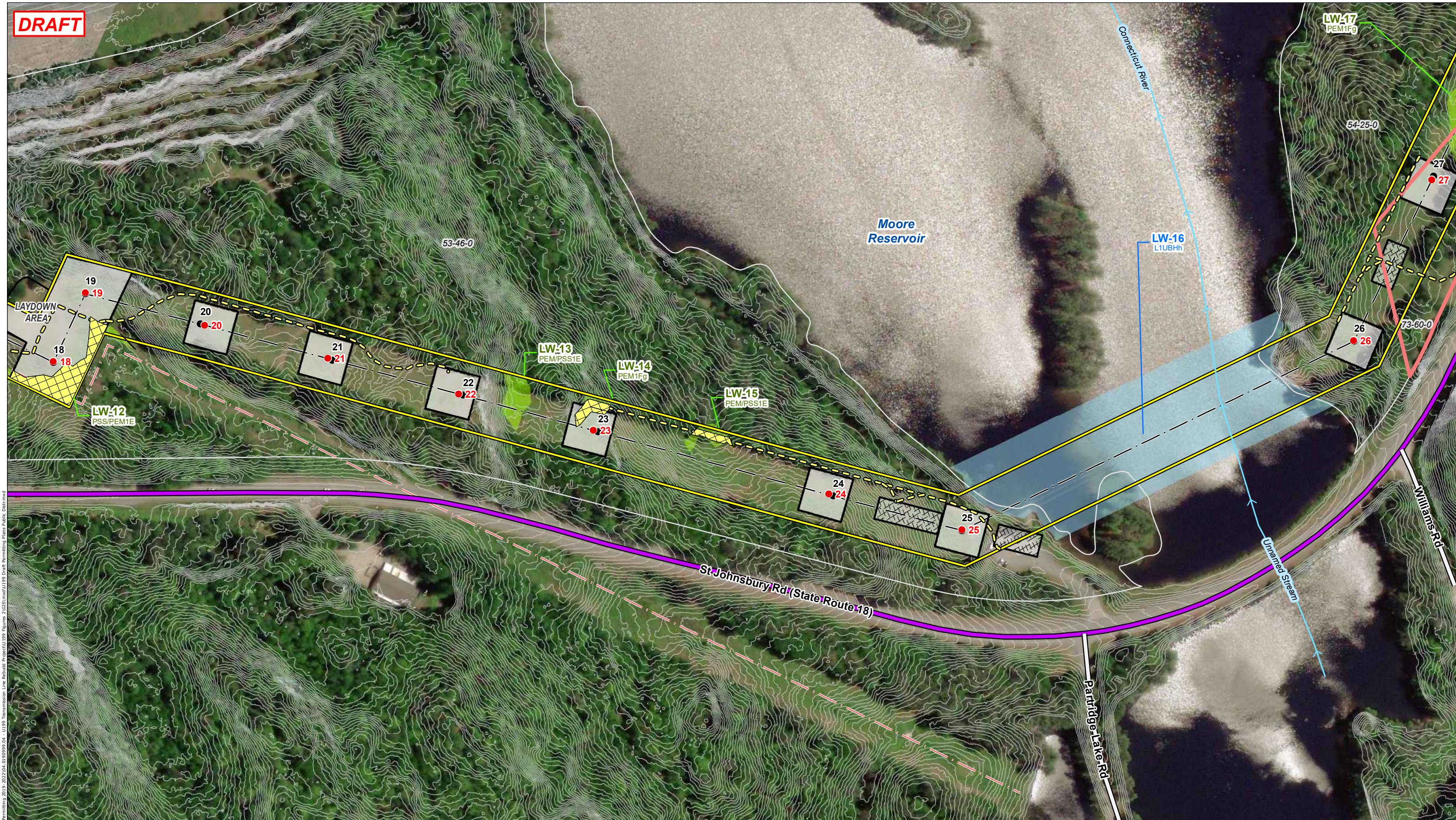
U199 Transmission Line Rebuild and OPGW Project

Littleton, NH MAP SHEET

Date: October, 2023

04.0191410.12 **2 OF 16**

DRAFT



● PROPOSED STRUCTURES	— TRANSMISSION LINE ROW	▭ TOWN BOUNDARY	▭ PROPOSED ACCESS
● EXISTING STRUCTURE	— TOWN MAINTAINED ROAD	▭ PEATLAND HABITAT	▭ PULL PADS
- - - DISTRIBUTION LINE	— NHDOT ROAD	▭ VEGETATED WETLAND	▭ WORK PAD
X-X-X FENCE	▭ PARCEL BOUNDARY	▭ OPEN WATER WETLAND	- - - TRANSMISSION LINE
▭ UPLAND MATTING	▭ EVERSOURCE OWNED PARCEL	▭ RAILROAD	▭ GATES
▭ TEMPORARY WETLAND MATTING	▭ STATE OWNED PARCEL	— 2FT ELEVATION CONTOURS	→ NHD FLOWLINES

This mapping product has been created to comply with submittal requirements to obtain certain regulatory approvals and, as such, there is no reliance on the information contained herein for any other purpose.

1 inch = 200 feet

0 50 100 200 Feet

NO.	DATE	REVISIONS

EVERSOURCE ENERGY

U199 Transmission Line Rebuild and OPGW Project

Littleton, NH MAP SHEET

Date: October, 2023

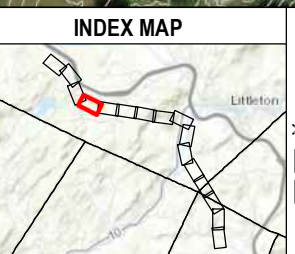
04.0191410.12 **3 OF 16**

Path: P:\Jobs\01909005\04.01909005_00 - EE Siting Permitting\2019-2022\04.01909005_04 - U199 Transmission Line Rebuild Project\0199 - Figure 2\GIS\mxd\U199 Draft Permitting Plans Public Draft.mxd

DRAFT



Path: P:\Jobs\01909005\04.019999.00 - EE Siting Permitting\2019-2022\04.019999.04 - U199 Transmission Line Rebuild Project\0199 Figure 2\GIS\mxd\U199 Draft Permitting Plans Public Decided.mxd



- | | | | |
|-----------------------------|---------------------------|--------------------------|-------------------------|
| ● PROPOSED STRUCTURES | — TRANSMISSION LINE ROW | ▭ TOWN BOUNDARY | — PROPOSED ACCESS |
| ● EXISTING STRUCTURE | — TOWN MAINTAINED ROAD | ▭ PEATLAND HABITAT | ▭ PULL PADS |
| - - - DISTRIBUTION LINE | — NHDOT ROAD | ▭ VEGETATED WETLAND | ▭ WORK PAD |
| X-X-X FENCE | ▭ PARCEL BOUNDARY | ▭ OPEN WATER WETLAND | - - - TRANSMISSION LINE |
| ▭ UPLAND MATTING | ▭ EVERSOURCE OWNED PARCEL | ▭ RAILROAD | ▭ GATES |
| ▭ TEMPORARY WETLAND MATTING | ▭ STATE OWNED PARCEL | — 2FT ELEVATION CONTOURS | — NHD FLOWLINES |

This mapping product has been created to comply with submittal requirements to obtain certain regulatory approvals and, as such, there is no reliance on the information contained herein for any other purpose.

1 inch = 200 feet

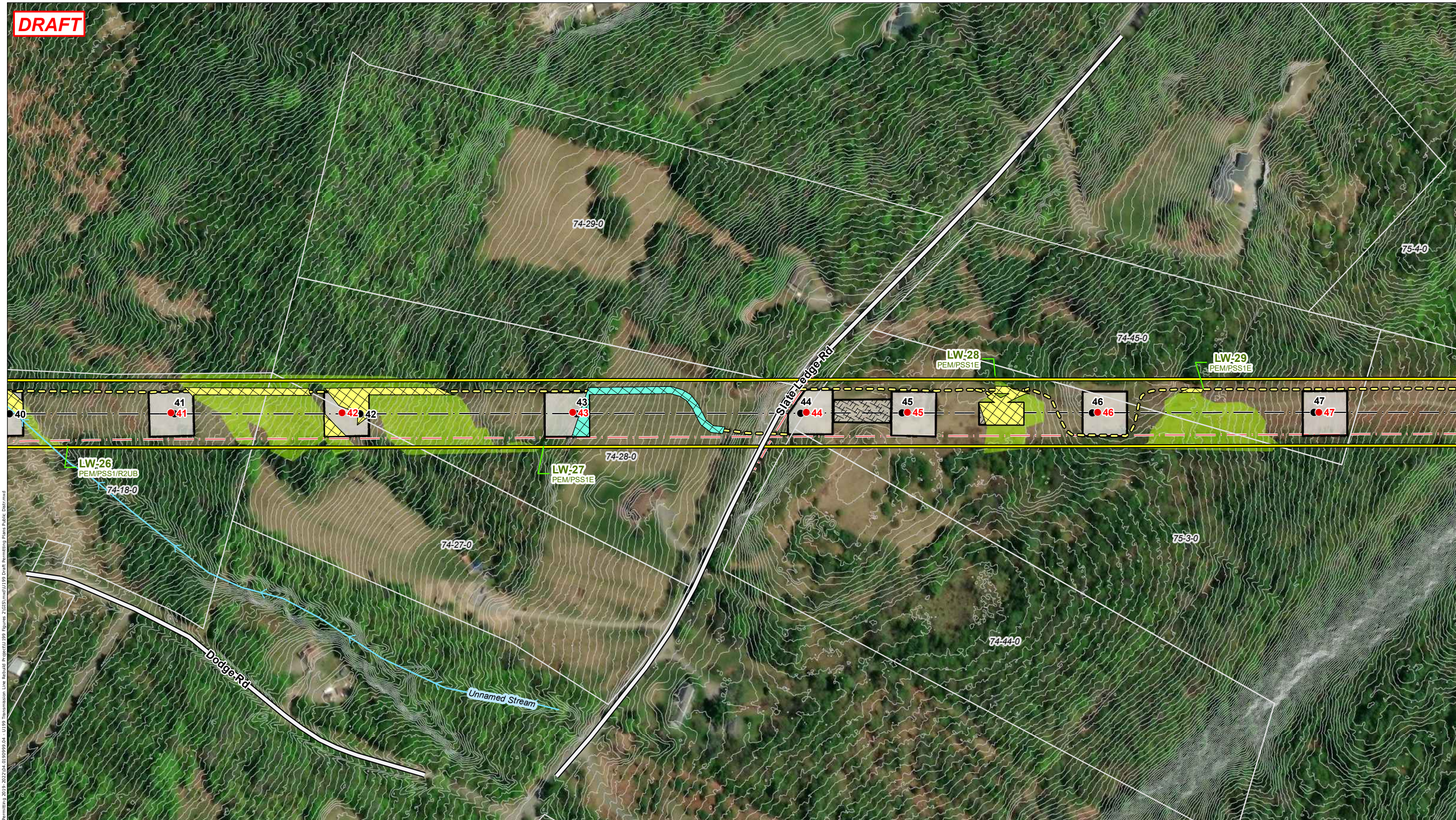
0 50 100 200 Feet

NO.	DATE	REVISIONS

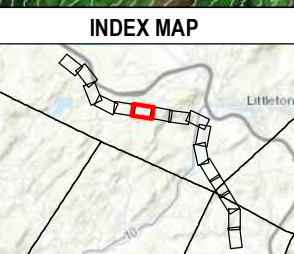
EVERSOURCE ENERGY
U199 Transmission Line Rebuild and OPGW Project

Littleton, NH	MAP SHEET
Date: October, 2023	4 OF 16
04.0191410.12	

DRAFT



Path: P:\Jobs\01909005\04.01.9999.00 - EE Siting Permitting\2019 - 2022\04.01.9999.04 - U199 Transmission Line Rebuild Project\0199 Figure 2\GIS\mxd\U199 Draft Permitting Plans Public Decr.mxd



● PROPOSED STRUCTURES	— TRANSMISSION LINE ROW	▭ TOWN BOUNDARY	— PROPOSED ACCESS
● EXISTING STRUCTURE	— TOWN MAINTAINED ROAD	▭ PEATLAND HABITAT	▭ PULL PADS
- - - DISTRIBUTION LINE	— NHDOT ROAD	▭ VEGETATED WETLAND	▭ WORK PAD
X-X-X FENCE	▭ PARCEL BOUNDARY	▭ OPEN WATER WETLAND	- - - TRANSMISSION LINE
▭ UPLAND MATTING	▭ EVERSOURCE OWNED PARCEL	▭ RAILROAD	▭ GATES
▭ TEMPORARY WETLAND MATTING	▭ STATE OWNED PARCEL	— 2FT ELEVATION CONTOURS	▭ NHD FLOWLINES

This mapping product has been created to comply with submittal requirements to obtain certain regulatory approvals and, as such, there is no reliance on the information contained herein for any other purpose.

1 inch = 200 feet

0 50 100 200 Feet

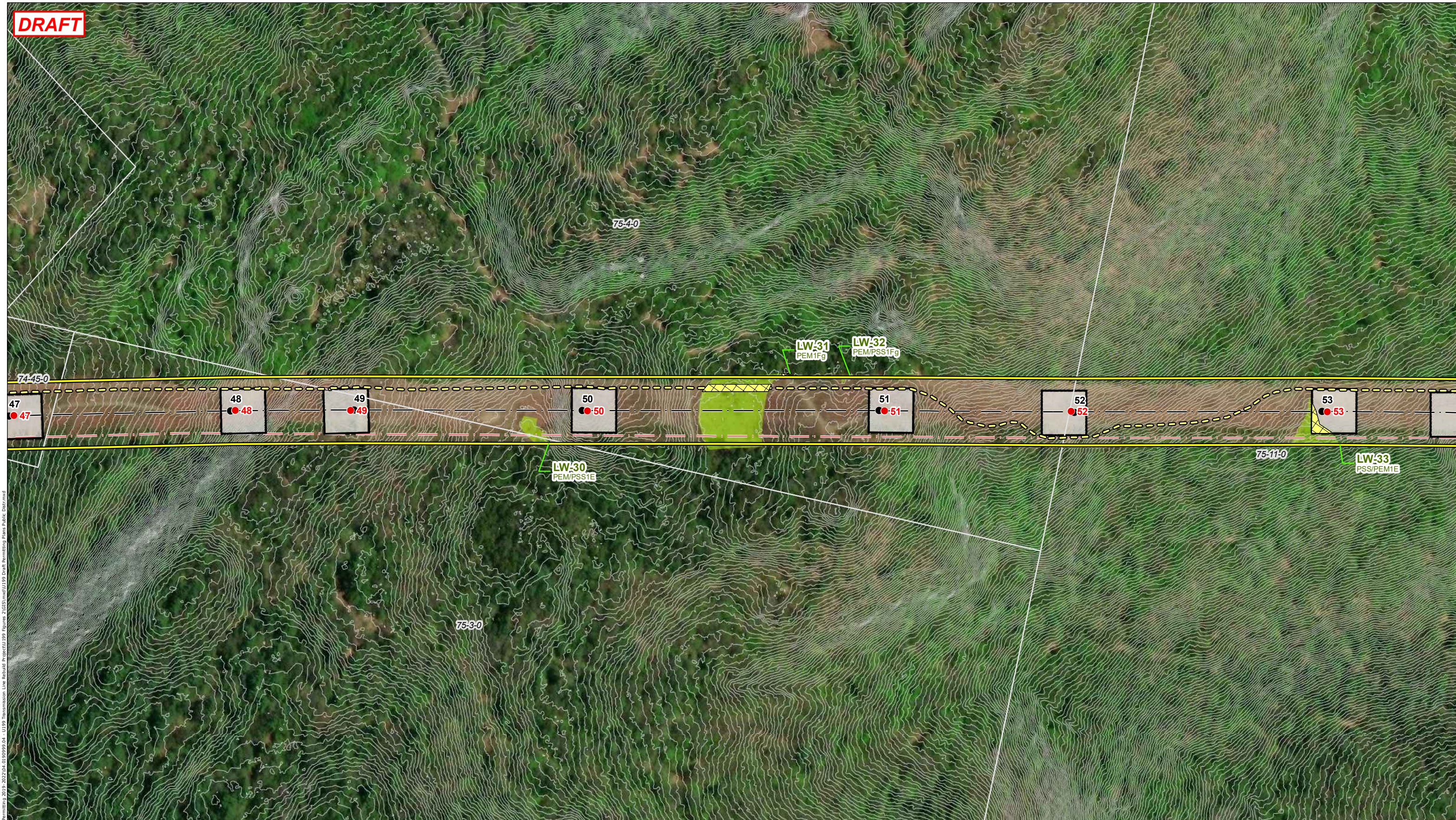
NO.	DATE	REVISIONS

EVERSOURCE ENERGY

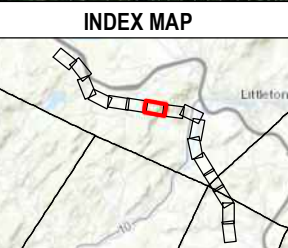
U199 Transmission Line Rebuild and OPGW Project

Littleton, NH	MAP SHEET
Date: October, 2023	6 OF 16
04.0191410.12	

DRAFT



Path: P:\Jobs\01909005\04.0190999.00 - EE Siting Permitting\2019-2022\04.0190999.04 - U199 Transmission Line Rebuild Project\0199 Figure 2\GIS\mxd\U199 Draft Permitting Plans Public Decr.mxd



● PROPOSED STRUCTURES	— TRANSMISSION LINE ROW	▭ TOWN BOUNDARY	— PROPOSED ACCESS
● EXISTING STRUCTURE	— TOWN MAINTAINED ROAD	▭ PEATLAND HABITAT	▭ PULL PADS
- - - DISTRIBUTION LINE	— NHDOT ROAD	▭ VEGETATED WETLAND	▭ WORK PAD
X-X-X FENCE	▭ PARCEL BOUNDARY	▭ OPEN WATER WETLAND	- - - TRANSMISSION LINE
▭ UPLAND MATTING	▭ EVERSOURCE OWNED PARCEL	▭ RAILROAD	▭ GATES
▭ TEMPORARY WETLAND MATTING	▭ STATE OWNED PARCEL	— 2FT ELEVATION CONTOURS	→ NHD FLOWLINES

This mapping product has been created to comply with submittal requirements to obtain certain regulatory approvals and, as such, there is no reliance on the information contained herein for any other purpose.

1 inch = 200 feet

0 50 100 200 Feet

NO.	DATE	REVISIONS

EVERSOURCE ENERGY

U199 Transmission Line Rebuild and OPGW Project

Littleton, NH MAP SHEET

Date: October, 2023

04.0191410.12

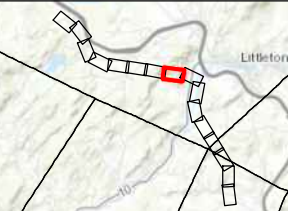
7 OF 16

DRAFT



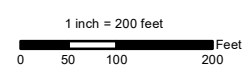
Path: P:\Jobs\01909005\04.0190999_00 - EE Siting Permitting\2019-2022\04.0190999_04 - U199 Transmission Line Rebuild Project\0199 - Figure 2\GIS\mxd\U199 Draft Permitting Plans Public Decr.mxd

INDEX MAP



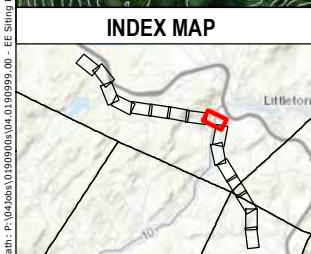
- PROPOSED STRUCTURES
- EXISTING STRUCTURE
- - - DISTRIBUTION LINE
- X-X- FENCE
- ▨ UPLAND MATTING
- ▨ TEMPORARY WETLAND MATTING
- ▬ TRANSMISSION LINE ROW
- ▬ TOWN MAINTAINED ROAD
- ▬ NHDOT ROAD
- ▬ PARCEL BOUNDARY
- ▬ EVERSOURCE OWNED PARCEL
- ▬ STATE OWNED PARCEL
- ▭ TOWN BOUNDARY
- ▭ PEATLAND HABITAT
- ▭ VEGETATED WETLAND
- ▭ OPEN WATER WETLAND
- ▭ RAILROAD
- ▭ 2FT ELEVATION CONTOURS
- ▭ PROPOSED ACCESS
- ▭ PULL PADS
- ▭ WORK PAD
- ▭ TRANSMISSION LINE
- ▭ GATES
- ▭ NHD FLOWLINES

This mapping product has been created to comply with submittal requirements to obtain certain regulatory approvals and, as such, there is no reliance on the information contained herein for any other purpose.



		EVERSOURCE ENERGY	
		U199 Transmission Line Rebuild and OPGW Project	
		Littleton, NH	MAP SHEET
		Date: October, 2023	8 OF 16
NO.	DATE	REVISIONS	
		04.0191410.12	

DRAFT



● PROPOSED STRUCTURES	— TRANSMISSION LINE ROW	▭ TOWN BOUNDARY	▭ PROPOSED ACCESS
● EXISTING STRUCTURE	— TOWN MAINTAINED ROAD	▭ PEATLAND HABITAT	▭ PULL PADS
- - - DISTRIBUTION LINE	— NHDOT ROAD	▭ VEGETATED WETLAND	▭ WORK PAD
X-X-X FENCE	▭ PARCEL BOUNDARY	▭ OPEN WATER WETLAND	- - - TRANSMISSION LINE
▭ UPLAND MATTING	▭ EVERSOURCE OWNED PARCEL	▭ RAILROAD	▭ GATES
▭ TEMPORARY WETLAND MATTING	▭ STATE OWNED PARCEL	— 2FT ELEVATION CONTOURS	→ NHD FLOWLINES

This mapping product has been created to comply with submittal requirements to obtain certain regulatory approvals and, as such, there is no reliance on the information contained herein for any other purpose.

1 inch = 200 feet

0 50 100 200 Feet

NO.	DATE	REVISIONS

EVERSOURCE ENERGY

U199 Transmission Line Rebuild and OPGW Project

Littleton, NH MAP SHEET

Date: October, 2023

04.0191410.12 **9 OF 16**

Path: P:\Jobs\19190905\04.01.19\91999.00 - EE Siting Permitting\2019-2022\04.01.19\91999.04 - U199 Transmission Line Rebuild Project\1919 Figure 2\GIS\mxd\U199 Draft Permitting Plans Public Decr.mxd

DRAFT



Path: P:\Jobs\019191010\04.019191010 - E1 Siting Permitting 2019 - 2022\04.019191010 - 019191010 Transmission Line Rebuild Project\019191010 - 019191010 Draft Permitting Plans Public Det.mxd



- | | | | |
|-----------------------------|---------------------------|--------------------------|-------------------------|
| ● PROPOSED STRUCTURES | — TRANSMISSION LINE ROW | ▭ TOWN BOUNDARY | ▭ PROPOSED ACCESS |
| ● EXISTING STRUCTURE | — TOWN MAINTAINED ROAD | ▭ PEATLAND HABITAT | ▭ PULL PADS |
| - - - DISTRIBUTION LINE | — NHDOT ROAD | ▭ VEGETATED WETLAND | ▭ WORK PAD |
| X-X-FENCE | ▭ PARCEL BOUNDARY | ▭ OPEN WATER WETLAND | - - - TRANSMISSION LINE |
| ▭ UPLAND MATTING | ▭ EVERSOURCE OWNED PARCEL | ▭ RAILROAD | ▭ GATES |
| ▭ TEMPORARY WETLAND MATTING | ▭ STATE OWNED PARCEL | — 2FT ELEVATION CONTOURS | → NHD FLOWLINES |

This mapping product has been created to comply with submittal requirements to obtain certain regulatory approvals and, as such, there is no reliance on the information contained herein for any other purpose.

1 inch = 200 feet

0 50 100 200 Feet

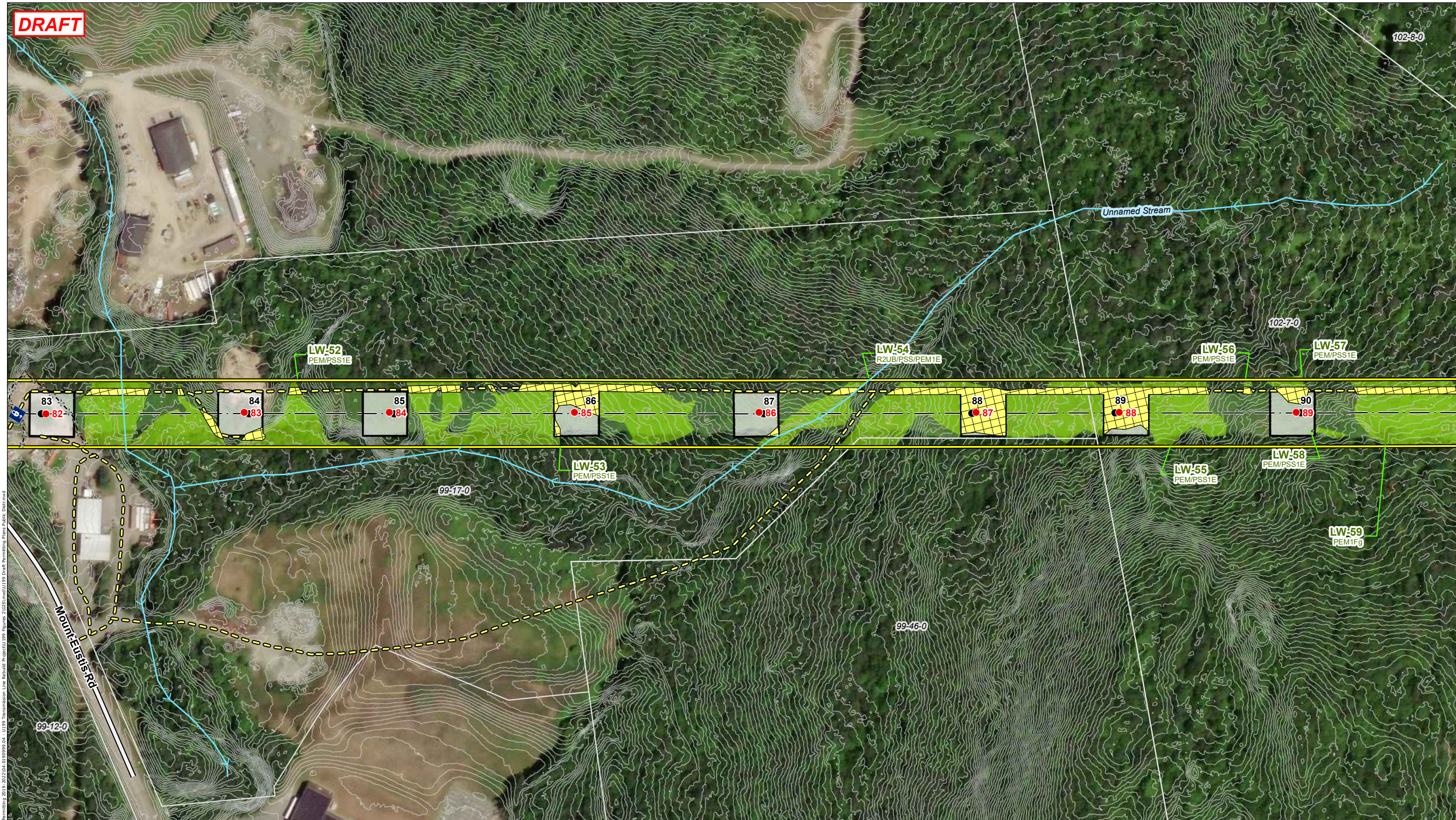
NO.	DATE	REVISIONS

EVERSOURCE ENERGY

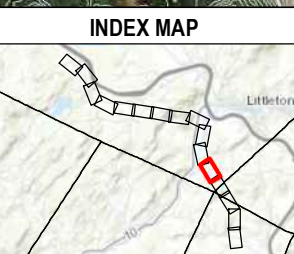
U199 Transmission Line Rebuild and OPGW Project

Littleton, NH	MAP SHEET
Date: October, 2023	10 OF 16
04.0191410.12	

DRAFT



Path: P:\Jobs\19190905\04.01.19\19190905_04 - U199 Transmission Line Rebuild Project\1919190905_04 - U199 Transmission Line Rebuild Project\1919190905_04 - U199 Draft Permitting Plans Public.Dwg



● PROPOSED STRUCTURES	— TRANSMISSION LINE ROW	▭ TOWN BOUNDARY	— PROPOSED ACCESS
● EXISTING STRUCTURE	— TOWN MAINTAINED ROAD	▭ PEATLAND HABITAT	▭ PULL PADS
- - - DISTRIBUTION LINE	— NHDOT ROAD	▭ VEGETATED WETLAND	▭ WORK PAD
×-×- FENCE	▭ PARCEL BOUNDARY	▭ OPEN WATER WETLAND	- - - TRANSMISSION LINE
▭ UPLAND MATTING	▭ EVERSOURCE OWNED PARCEL	— RAILROAD	▭ GATES
▭ TEMPORARY WETLAND MATTING	▭ STATE OWNED PARCEL	— 2FT ELEVATION CONTOURS	→ NHD FLOWLINES

This mapping product has been created to comply with submittal requirements to obtain certain regulatory approvals and, as such, there is no reliance on the information contained herein for any other purpose.

1 inch = 200 feet

0 50 100 200 Feet

NO.	DATE	REVISIONS

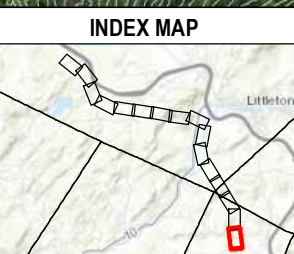
EVERSOURCE ENERGY
U199 Transmission Line Rebuild and OPGW Project

Littleton, NH	MAP SHEET
Date: October, 2023	12 OF 16
04.0191410.12	

DRAFT



Path: P:\Jobs\1919000\1919000_01\1919000_01 - E1 Siting Permitting 2019 - 2022\04_01_1919000_01 - U199 Transmission Line Rebuild Project\1919000_01\1919000_01 Draft Permitting Plans Public Decided



● PROPOSED STRUCTURES	— TRANSMISSION LINE ROW	▭ TOWN BOUNDARY	▭ PROPOSED ACCESS
● EXISTING STRUCTURE	— TOWN MAINTAINED ROAD	▭ PEATLAND HABITAT	▭ PULL PADS
- - - DISTRIBUTION LINE	— NHDOT ROAD	▭ VEGETATED WETLAND	▭ WORK PAD
X-X-FENCE	▭ PARCEL BOUNDARY	▭ OPEN WATER WETLAND	- - - TRANSMISSION LINE
▭ UPLAND MATTING	▭ EVERSOURCE OWNED PARCEL	— RAILROAD	▭ GATES
▭ TEMPORARY WETLAND MATTING	▭ STATE OWNED PARCEL	— 2FT ELEVATION CONTOURS	→ NHD FLOWLINES

This mapping product has been created to comply with submittal requirements to obtain certain regulatory approvals and, as such, there is no reliance on the information contained herein for any other purpose.

1 inch = 200 feet

0 50 100 200 Feet

NO.	DATE	REVISIONS

EVERSOURCE ENERGY

U199 Transmission Line Rebuild and OPGW Project

Sugar Hill, NH	MAP SHEET
Date: October, 2023	16 OF 16
04.0191410.12	