

From: [Faunce, Jasmin - FS, NH](#)
To: [Bowen, Brooke - FS, NH](#); [Lew, Warren - FS, NH](#); [Thompson, Ryanne - FS, NH](#); [Shingler, Michael - FS, NH](#); [Farina, Benjamin - FS, NH](#)
Subject: FW: X178-2 follow up
Date: Thursday, December 19, 2024 3:55:00 PM
Attachments: [image001.png](#)
[image002.png](#)
[image003.png](#)
[image004.png](#)
[image005.png](#)
[image006.png](#)
[image007.png](#)
[image008.png](#)
[image009.png](#)
[image010.png](#)
[image011.png](#)
[image012.png](#)

Thanks everyone for today's meeting to get on the same page about roads and bridges. Please see Kurt's email below to hopefully better answer some questions from this morning. Please let me know if have any further questions or concerns. I will continue to send additional information as I receive it and will reconnect with you all in the spring to schedule a field visit.

Best,
Jasmin

From: Nelson, Kurt I <kurt.nelson@eversource.com>
Sent: Thursday, December 19, 2024 2:01 PM
To: Faunce, Jasmin - FS, NH <jasmin.faunce@usda.gov>
Cc: Tracy Tarr <Tracy.Tarr@gsa.com>; Steven Riker <Steven.Riker@gsa.com>; Harris, Samuel D <samuel.harris@eversource.com>; Meyer, Jared M <jared.meyer@eversource.com>; Strachan, Angus P <angus.strachan@eversource.com>; Sperry, Joseph R <joseph.sperry@eversource.com>
Subject: RE: X178-2 follow up

Hi Jasmin,

Sorry I missed your call earlier. You are correct that there are two bridges in ROW that we are proposing to use. We've visually assessed these bridges, but will do a full engineering analysis to confirm their structural integrity. I've got some screenshots and coordinates of their locations below. There is an existing snow mobile bridge across Boles Brook off ROW that is not sufficient for our needs, so in this case we would propose upgrading the existing bridge or installing a temporary bridge adjacent to the existing to allow for equipment access along the off ROW snow mobile trail. At this time we are only proposing temporary bridging along the Crooked Pike access road and we are respectfully requesting a reconsideration of the USFS regarding the well established Crooked Pike Access Route vs the less established one.

If we are successful in permitting the full rebuild of the X-178 (there is now some question at the State level) our foreseeable access needs would be for periodic inspections (biannual or as needed with no heavy equipment needed), cyclical (4 year cycle) or emergency vegetation maintenance, or as needed repairs to the new infrastructure, which should be quite infrequent.

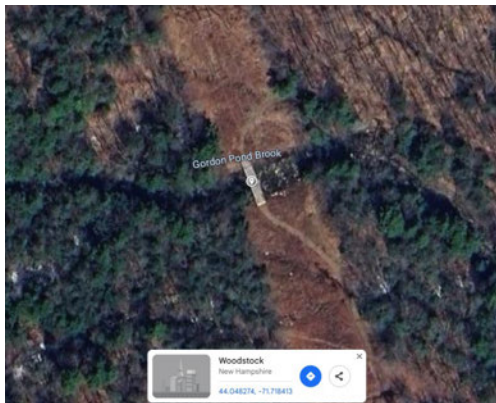
I believe an Eversource/USFS field review meeting in the spring to review the Crooked Pike access (as well as the bridge locations and proposed off ROW access routes) would be most helpful.

At this time we are focusing our efforts on coordinating the geotechnical work to facilitate the micropile design. Once we've completed that we can continue to provide the USFS with project information. Our current permitting status at the State level is in question at the moment and there is a chance that we will need to permit the project under the State's Siting Rules so there is some question regarding the format of our State permit applications, but regardless, we will provide the USFS all of the comprehensive permit application documents that we prepare for State permitting.

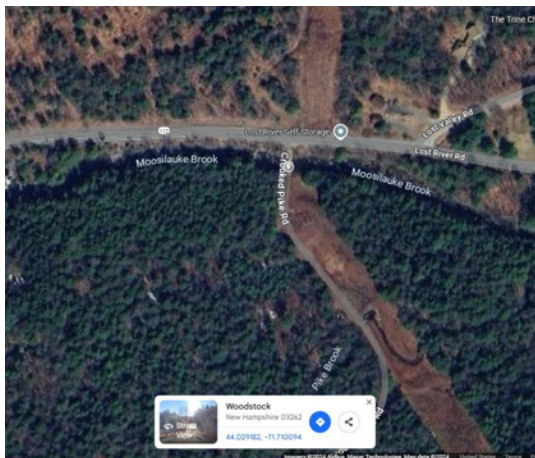
More to come.

Thanks.

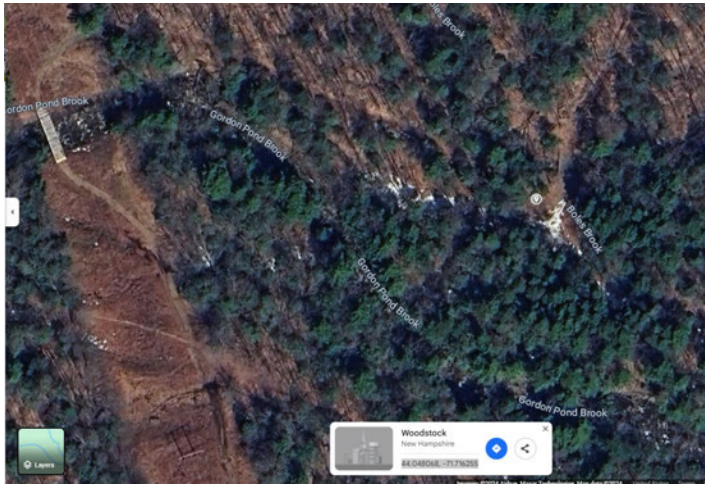
Bridge Across Gordon Pond Brook within ROW corridor.



Bridge Across Moosilauke Brook at Rt 112 in ROW.



Bridge Across Boles Brook in Snow Mobile Trail off ROW



From: Faunce, Jasmin - FS, NH <jasmin.faunce@usda.gov>
Sent: Thursday, December 19, 2024 10:36 AM
To: Nelson, Kurt I <kurt.nelson@eversource.com>
Subject: RE: X178-2 follow up

EVERSOURCE IT NOTICE – EXTERNAL EMAIL SENDER *** Don't be quick to click! *******

Do not click on links or attachments if sender is unknown or if the email is unexpected from someone you know, and never provide a user ID or password. Report suspicious emails by selecting 'Report Phish' or forwarding to SPAMFEEDBACK@EVERSOURCE.COM for analysis by our cyber security team.

Hi Kurt,

Thanks for the response and I await the additional information.

I tried calling you just now in hopes to better explain the following, but just incase we play phone tag today I'm also going to need more information regarding roads and bridges.

To summarize and confirm, you've identified 2 existing bridges that are needed for access: Gordon Pond Stream bridge has been already evaluated and you are working on getting upgrade designs; and Moosilauke Brook bridge has yet to be evaluated. Can you please confirm for me which roads these bridges are on? In addition to the two mentioned, FS Foresters believe a new bridge, possibly two, will be needed to cross Crooked Pike. Depending on Eversource's long term needs, will these bridges be temporary or permanent? Defining your anticipated frequency of access or use will help us understand what specifications/designs are needed.

I'll be in and out of meetings today but give me a call back if you want to discuss this further.

Thanks,
Jasmin

From: Nelson, Kurt I <kurt.nelson@eversource.com>
Sent: Monday, December 2, 2024 4:54 PM
To: Faunce, Jasmin - FS, NH <jasmin.faunce@usda.gov>
Subject: RE: X178-2 follow up

Hi Jasmin,

Hope you had a great Thanksgiving. We appreciate the offer to reschedule the field visit. December 16th would work for our team. I can reforward the invitation and itinerary for that date.

I'm providing some information with respect to some of your questions below with more information to follow.

Thanks.

Kurt Nelson

EVERSOURCE
ENERGY
Manager, Licensing & Permitting
13 Legends Drive
Hooksett, NH 03106
Office: [REDACTED]
Cell: [REDACTED]
kurt.nelson@eversource.com

From: Faunce, Jasmin - FS, NH <jasmin.faunce@usda.gov>
Sent: Tuesday, November 26, 2024 3:36 PM
To: Nelson, Kurt I <kurt.nelson@eversource.com>
Subject: X178-2 follow up

EVERSOURCE IT NOTICE – EXTERNAL EMAIL SENDER *** Don't be quick to click! *******

Do not click on links or attachments if sender is unknown or if the email is unexpected from someone you know, and never provide a user ID or password. Report suspicious emails by selecting 'Report Phish' or forwarding to SPAMFEEDBACK@EVERSOURCE.COM for analysis by our cyber security team.

Hi Kurt,

I was hoping we could connect on the phone but given the upcoming holiday season, I'd rather just get these mentions and requests to you sooner than later. Please let me know if anything needs clarification.

Some things to mention:

- Gordon Pond Stream bridge – provide all proposed specs. Is it safe to assume that all upgrades will remain on Forest and not removed once the project is completed?
 - Eversource would like to request any drawing plans that the USFS may have for this bridge
 - We will enlist the help of civil engineers to conduct an assessment of the bridge and provide that information to the USFS
 - Any improvements made to the bridge would remain.



- Gordon Pond Snomo Trail (aka Balanced Rock Snomo Trail) Please be mindful around the off-forest corner – from our experience, there may be some HOA restrictions that may interfere with typical access. We are not proposing using the section of trail outside of the WMNF. We are seeking to use the stretch that goes off ROW between Str 211/212 and enters the ROW corridor at Str 222 and 227.

Additionally, in response to your prior question about “weaving,” typically we don’t want to create more trails. If you can provide spatial data of what that “weaving” may look like, or point it out when we do get into the field, our Recreation specialists may be able to answer that question more directly.

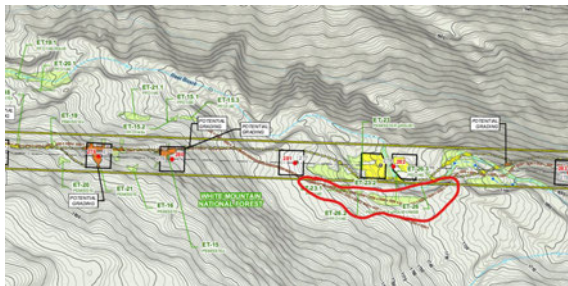
Here’s an example of our current in ROW access that we will look to revise. Our proposed gravel/timber mat access route is the yellow dashed line and the existing snow mobile trail is the reddish line. Our initial plan was to try to stay off of the trail for the most part, but from a disturbance/aesthetic standpoint it makes sense to utilize the trail as much as possible. There are a number of vernal pools within the snowmobile trail that we will need to avoid and we will need to take the least disturbing route through wetlands areas. We can discuss this more at our site meeting.



- Do you have experience or would be open to discussing third-party specialists to monitor specific areas of concern?
Yes – we are experienced and amenable to hiring 3rd party specialists to monitor specific areas of concern.
- If you haven’t already, start thinking about public engagement – partners and snomo clubs are especially curious about potential closures/reroutes/seasonal effects on user base. Let’s connect on that to ensure consistent messaging.
We will provide you with our outreach strategy (still in development) for stakeholders within the WMNF including the snow mobile club, the AMC and the ATC.

Other requests:


- One-pager for project justification (upgrade vs rebuild)
We have lots of documentation on this. I’ll provide you with some reference material.
- Spatial data for locations for any spanned water crossings (vs timber matting) with descriptions and photos (if possible, photos from both sides, and up and down stream of the structure)
We’ll work on putting together spatial data and photos for all proposed spanned water crossings.
- Are there any bridges (aside from Gordon Pond Stream) proposed to be used? Or specify if there are bridge adjacent access proposals?
Yes. We are proposing to utilize the existing bridge across Moosilauke Brook at Rt 112. We will plan on conducting a structural evaluation of this bridge.
- Aside from the spur at STR 222, are there any other spur road locations to connect off-ROW to ROW corridor?
Based on our last field recon, we’ve determined that it would be advantageous to utilize a portion of the off ROW access in the vicinity of Str 281 and 282 to avoid some in ROW stream crossings. The plan set will be revised to reflect this change.



- Clarification on which permit plan set is final.
We will provide you with an updated plan set ASAP.

In looking at rescheduling the field visit, Monday December 16th is our first choice. Friday, December 13th could also work minus 1-2 folks. Friday December 20th is also an option, but maybe with even less folks available. That’s the best we could come up with at this time of year. Happy to keep all three options open given the uncertainty with weather. It’d be best for our Hydro team to see it without snow on the ground. Let me know what works for you and your team, and we’ll go from there.

Thanks again for your flexibility and commitment to safety this morning. It was the right decision. Hope everyone made it safely in their travels.

 Jasmin Faunce (she/her)
Realty Specialist
Forest Service
White Mountain National Forest
c. [redacted]
jasmintfaunce@usda.gov
71 White Mountain Drive
Campton, NH 03223
www.fs.usda.gov
Caring for the land and serving people

This electronic message contains information generated by the USDA solely for the intended recipients. Any unauthorized interception of this message or the use or disclosure of the information it contains may violate the law and subject the violator to civil or criminal penalties. If you believe you have received this message in error, please notify the sender and delete the email immediately.

This electronic message contains information from Eversource Energy or its affiliates that may be confidential, proprietary or otherwise protected from disclosure. The information is intended to be used solely by the recipient(s) named. Any views or opinions expressed in this message are not necessarily those of Eversource Energy or its affiliates. Any disclosure, copying or distribution of this message or the taking of any action based on its contents, other than by the intended recipient for its intended purpose, is strictly prohibited. If you have received this e-mail in error, please notify the sender immediately and delete it from your system. Email transmission cannot be guaranteed to be error-free or secure or free from viruses, and Eversource Energy disclaims all liability for any resulting damage, errors, or omissions.

This electronic message contains information from Eversource Energy or its affiliates that may be confidential, proprietary or otherwise protected from disclosure. The information is intended to be used solely by the recipient(s) named. Any views or opinions expressed in this message are not necessarily those of Eversource Energy or its affiliates. Any disclosure, copying or distribution of this message or the taking of any action based on its contents, other than by the intended recipient for its intended purpose, is strictly prohibited. If you have received this e-mail in error, please notify the sender immediately and delete it from your system. Email transmission cannot be guaranteed to be error-free or secure or free from viruses, and Eversource Energy disclaims all liability for any resulting damage, errors, or omissions.