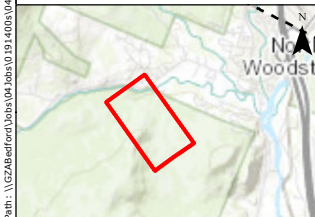
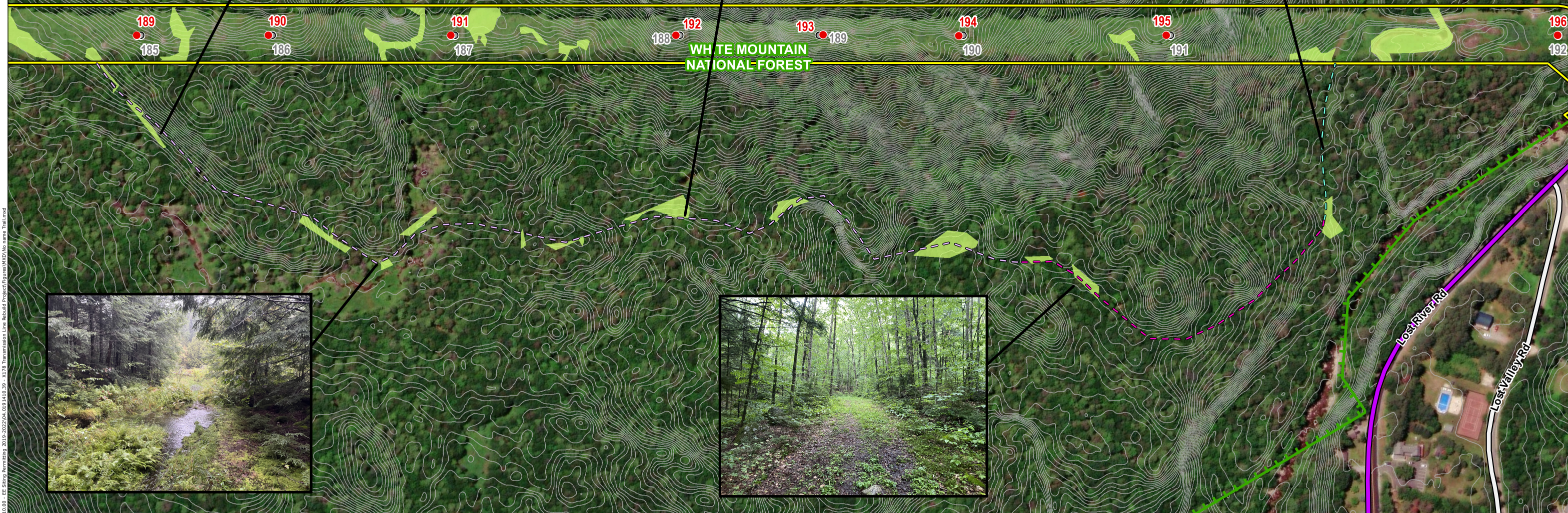












**DRAFT**



-  PROPOSED STRUCTURE  
 EXISTING STRUCTURE - NO WORK  
 STRUCTURE TO BE REMOVED  
 TRANSMISSION LINE ROW  
 FIELD DELINEATED WETLAND  
 TOWN MAINTAINED ROAD  
 NHDOT ROAD  
 FEDERAL ROAD  
 PRIVATE ROAD  
 WHITE MOUNTAIN NATIONAL FOREST BOUNDARY

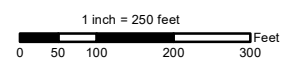
— 2FT CONTOURS


**POTENTIAL OFF-ROW ACCESS**

- CROOKED PIKE SPUR A
- CROOKED PIKE SPUR B
- NO NAME TRAIL

NOTES:

1. PROPOSED STRUCTURES, EXISTING STRUCTURES, STRUCTURES TO BE REMOVED, AND TRANSMISSION LINE DATA LAYERS WERE OBTAINED FROM EVERSOURCE ENERGY.
2. ROADS AND 2FT CONTOUR DATA LAYERS WERE OBTAINED FROM NH GRANIT CLEARINGHOUSE.
3. WHITE MOUNTAIN NATIONAL FOREST BOUNDARY WAS OBTAINED FROM THE USDA FOREST SERVICE FSGEODATA CLEARINGHOUSE.
4. FIELD DELINEATED WETLANDS WERE DELINEATED BY GZA GEOENVIRONMENTAL, INC. WITHIN APPROXIMATELY 20 FEET OF LABELED TRAILS IN ACCORDANCE WITH THE 1987 AMRY CORPS OF ENGINEERS WETLAND DELINEATION MANUAL IN JULY AND AUGUST 2023.
5. GPS LOCATED POTENTIAL OFF ROW ACCESS WAS GPS LOCATED BY GZA IN JULY 2023 USING A HAND HELD EOS ARROW GNSS RECEIVER.



		<p><i>This mapping product has been created to comply with submittal requirements to obtain certain regulatory approvals and, as such, there is no reliance on the information contained herein for any other purpose.</i></p>		
			<p><b>X178 Transmission Line Structure Rebuild Project</b></p>	
			Woodstock, NH	MAP SHEET
			Date: March, 2024	<p><b>1 OF 1</b></p>
NO.	DATE	REVISIONS	04.0191410.39	