

UNLESS SPECIFICALLY STATED BY WRITTEN AGREEMENT, THIS DRAWING IS THE SOLE PROPERTY OF GZA GEOENVIRONMENTAL, INC. (GZA). THE INFORMATION SHOWN ON THE DRAWING IS SOLELY FOR THE USE BY GZA'S CLIENT OR THE CLIENT'S DESIGNATED REPRESENTATIVE FOR THE SPECIFIC PROJECT AND LOCATION IDENTIFIED ON THE DRAWING. THE DRAWING SHALL NOT BE TRANSFERRED, REUSED, COPIED, OR ALTERED IN ANY MANNER FOR USE AT ANY OTHER LOCATION OR FOR ANY OTHER PURPOSE WITHOUT THE PRIOR WRITTEN CONSENT OF GZA. ANY TRANSFER, REUSE, OR MODIFICATION TO THE DRAWING BY THE CLIENT OR OTHERS, WITHOUT THE PRIOR WRITTEN EXPRESS CONSENT OF GZA, WILL BE AT THE USER'S SOLE RISK AND WITHOUT ANY RISK OR LIABILITY TO GZA.

**LINE X104 TRANSMISSION
NORTH BRANCH RIVER AND STEELS POND WATER
CROSSING
ANTRIM AND HILLSBOROUGH, NEW HAMPSHIRE**

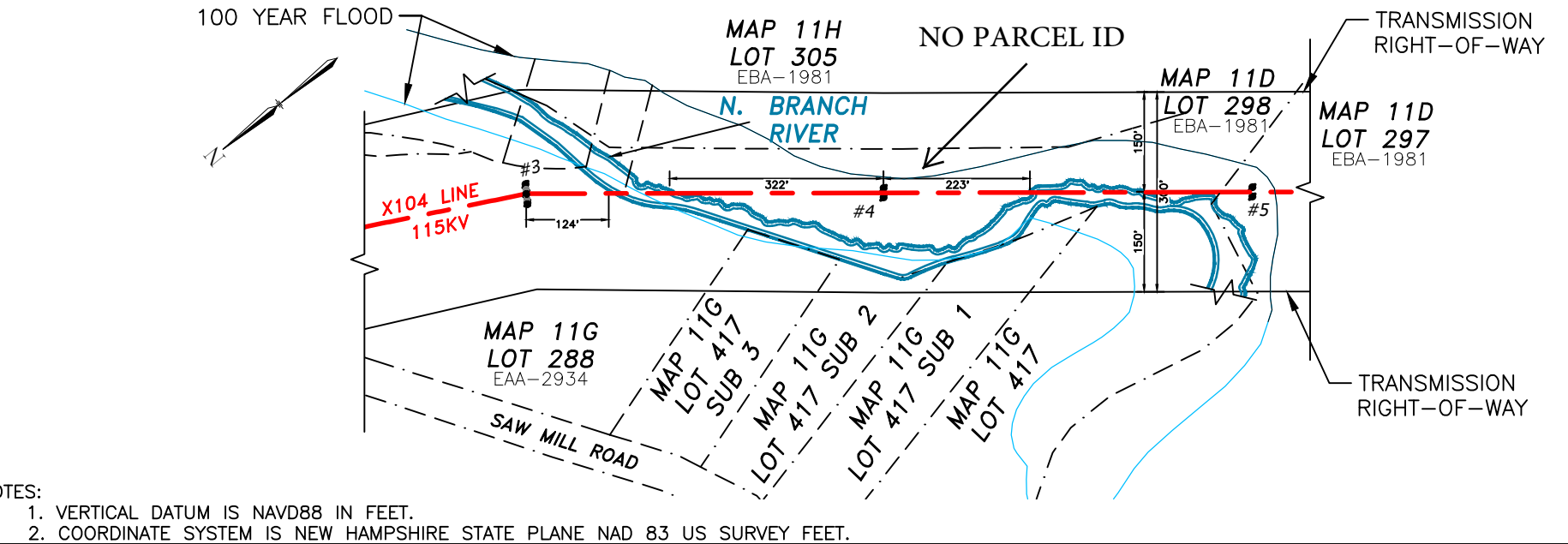
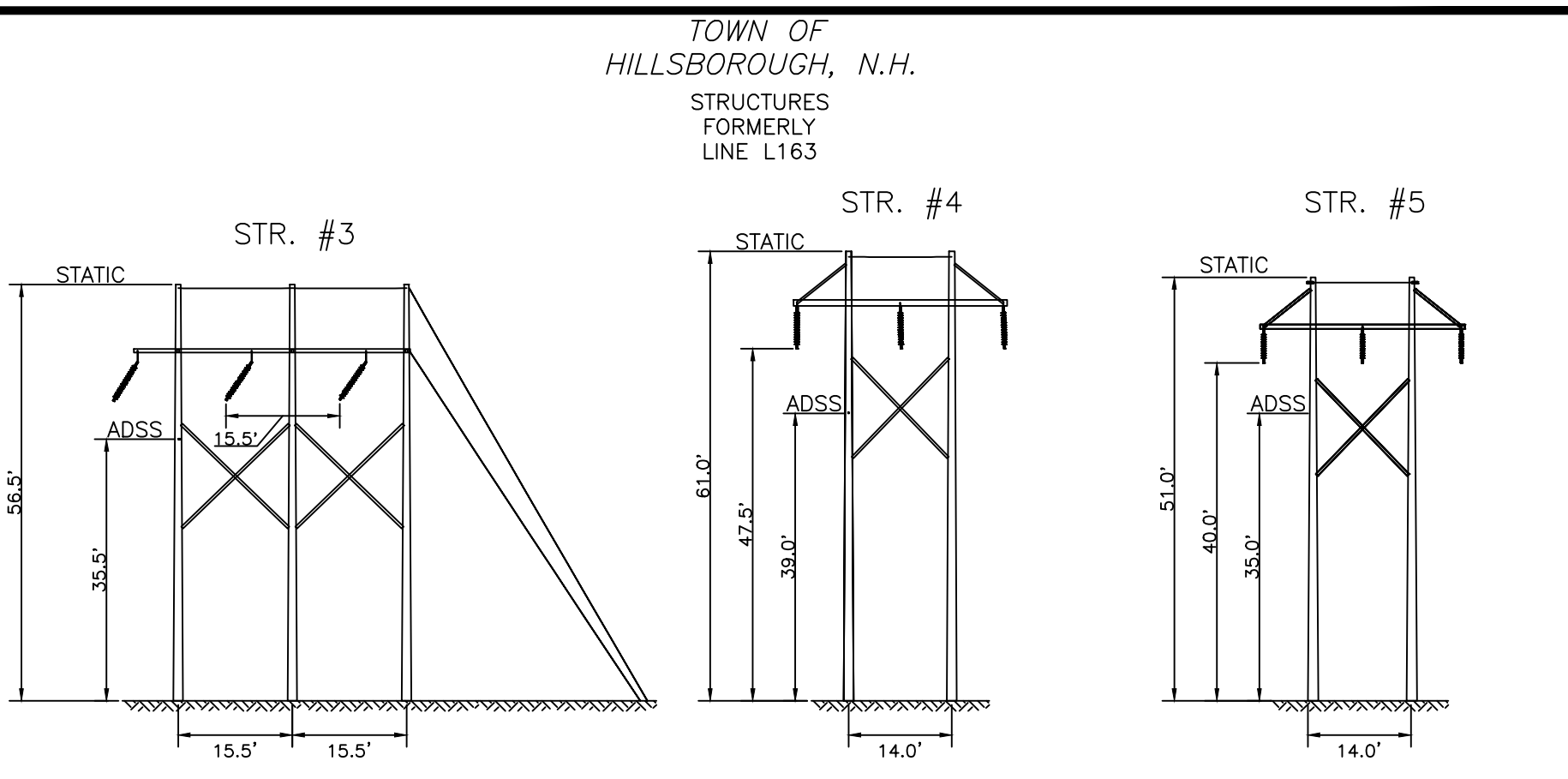
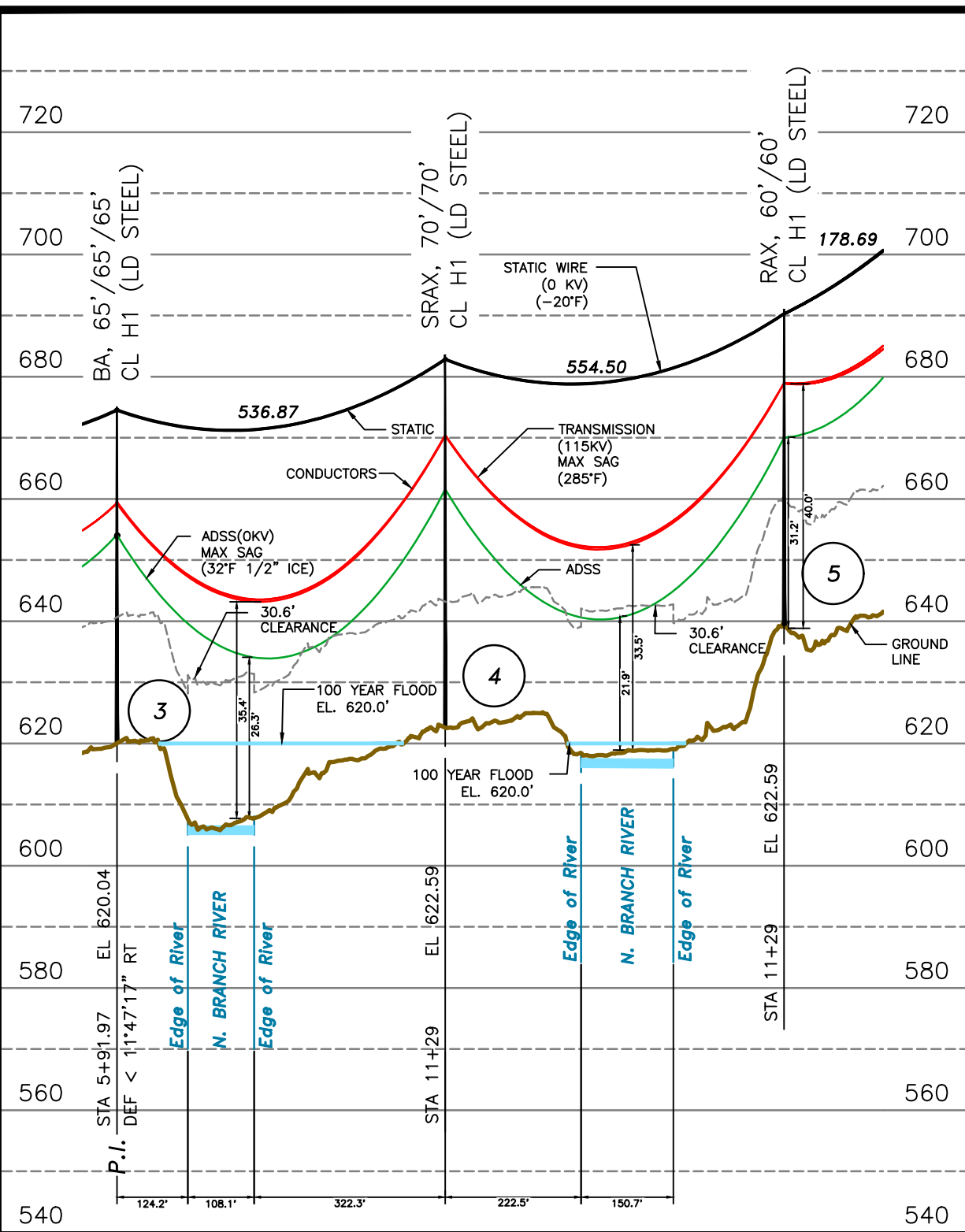
**OVERVIEW MAP
EXHIBIT #1**

PREPARED BY: GZA GeoEnvironmental, Inc. Engineers and Scientists www.gza.com		PREPARED FOR: EVERSOURCE ENERGY	
PROJ MGR: TLT	REVIEWED BY: DMZ	CHECKED BY: TLT	FIG 1
DESIGNED BY: MJD	DRAWN BY: MJD	SCALE: 1" = 2,000 FEET	
DATE: 08/09/2019	PROJECT NO: 04.0190923.05	REVISION NO.	

ES VER: 12/2016

C:\pwworkingemp\pw1\d2576959\X10443902-SH02.dwg - X104-SH02

8/2/2019 12:59 PM - Slessard

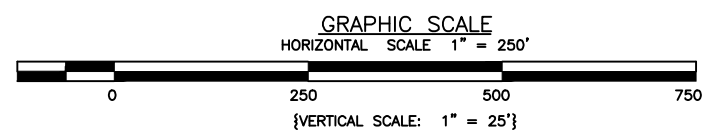


NOTES:
 1. VERTICAL DATUM IS NAVD88 IN FEET.
 2. COORDINATE SYSTEM IS NEW HAMPSHIRE STATE PLANE NAD 83 US SURVEY FEET.

STRUCTURE LOCATION:
 STR. #3 - LAT.= 43°6'39.132"N
 LONG.= 71°55'38.555"W
 STR. #4 - LAT.= 43°6'34.96"N
 LONG.= 71°55'43.023"W
 STR. #5 - LAT.= 43°6'30.659"N
 LONG.= 71°55'47.652"W

CABLE SCHEDULE:

WIRE	# OF CABLES	TYPE	DIA. (IN.)	WEIGHT/1000 FT	CABLE STRENGTH (LBS.)
STATIC	2	3#6 COPPERWELD	0.349	178	10,280
TRANSMISSION COND.	3	336.4 KCM 26/7 ACSR LINNET	0.720	462	14,100
ADSS	1	ADSS 72 FIBER	0.643	167	4,023



DWG REV	EPN/DESCRIPTION	CONT/PE#	DATE	DRN	CHKD	APPR
1	RE-ISSUED FOR USE		08/02/19	SAL	NEB	GEL
0	ISSUED FOR USE		06/07/19	NEB	SAL	GEL
A	ISSUED FOR REVIEW		03/15/19	SAL	JJD	GEL

EVERSOURCE ENERGY

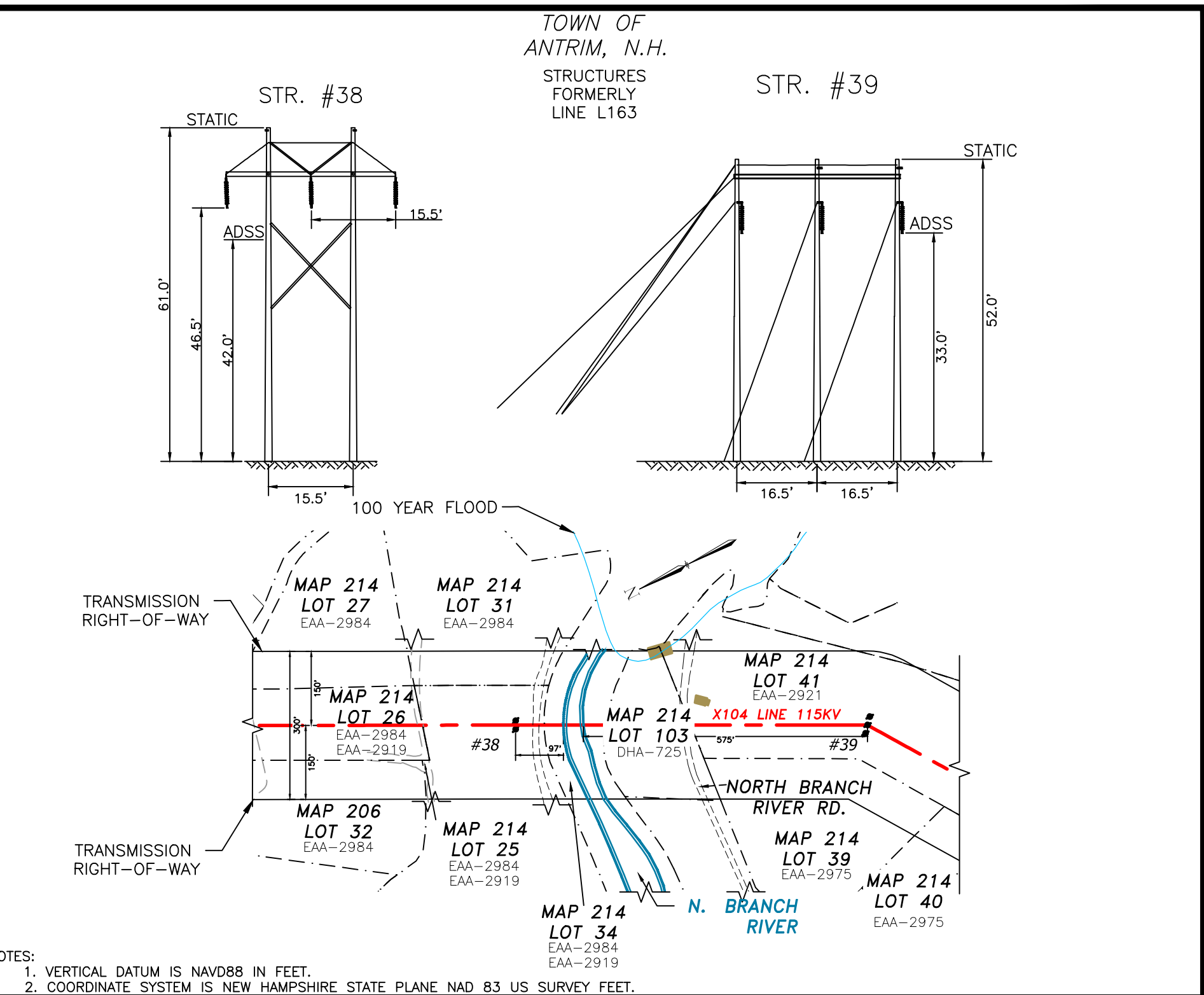
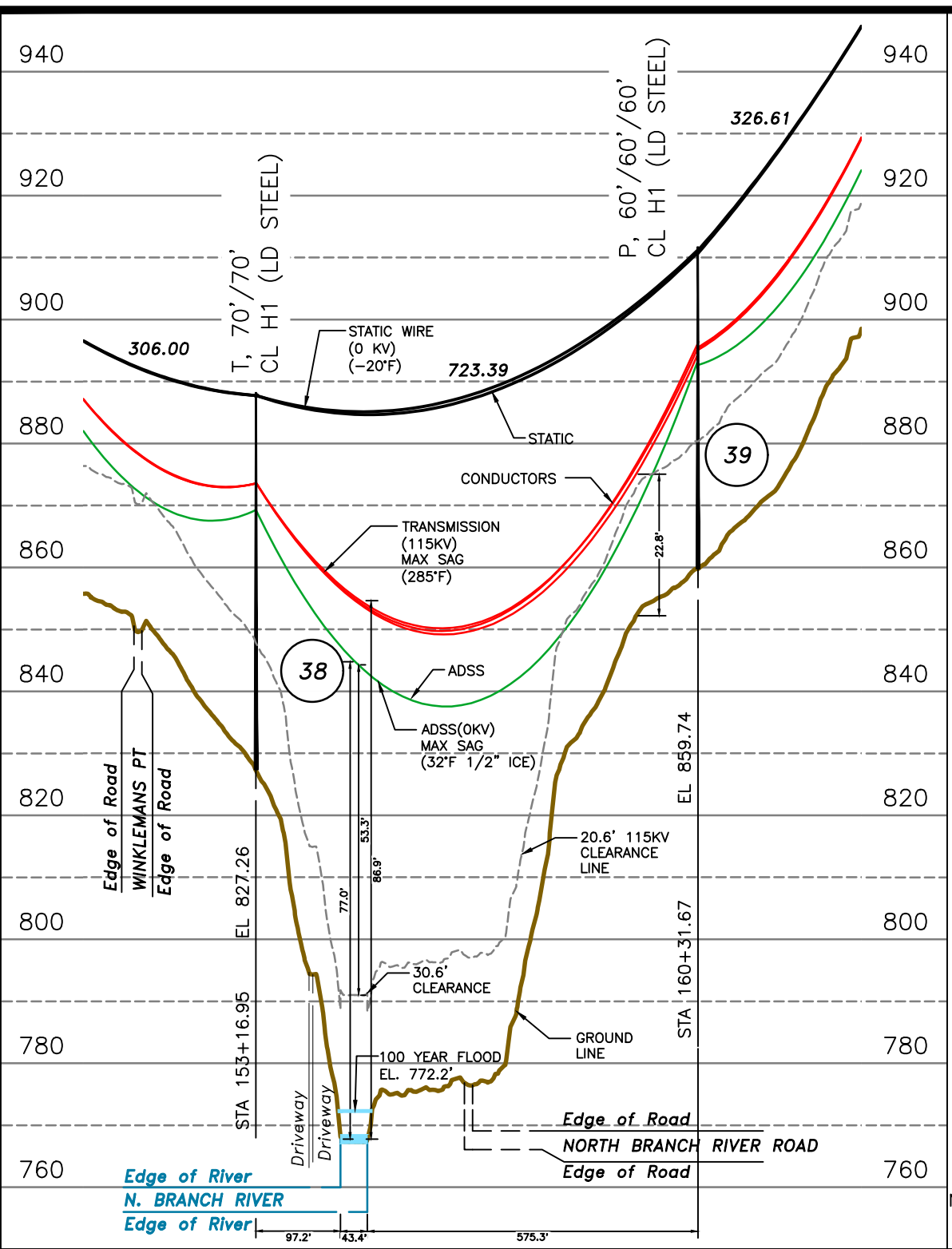
LINE X104 115KV TRANSMISSION
 N. BRANCH RIVER WATER CROSSING
 HILLSBOROUGH, N.H.
 EXHIBIT #2

SCALE AS SHOWN
 FILE: X10443902-SH02.DWG
 DRAWING NO. X10443902-SH02

T	1
DRAWN	SAL/TRC
ENGINEER	GEL/TRC
CHECKED	JJD/TRC
APPROVED	GEL/TRC
DATE	03/12/19

ES VER: 12/2016

8/20/2019 8:37 AM - Slessard - C:\pwworkingemp\pw\d2576959\X10443902-SH04.dwg - X104-SH04



NOTES:
 1. VERTICAL DATUM IS NAVD88 IN FEET.
 2. COORDINATE SYSTEM IS NEW HAMPSHIRE STATE PLANE NAD 83 US SURVEY FEET.

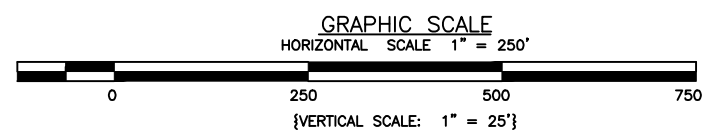
STRUCTURE LOCATION:

STR. #38 - LAT.= 43°4'54.911"N
 LONG.= 71°57'43.364"W
 STR. #39 - LAT.= 43°4'48.536"N
 LONG.= 71°57'47.77"W

CABLE SCHEDULE:

WIRE	# OF CABLES	TYPE	DIA. (IN.)	WEIGHT/1000 FT	CABLE STRENGTH (LBS.)
STATIC	2	3#6 COPPERWELD	0.349	178	10,280
TRANSMISSION COND.	3	336.4 KCM 26/7 ACSR LINNET	0.720	462	14,100
ADSS	1	ADSS 72 FIBER	0.643	167	4,023

PROFILE LEGEND:



DWG REV	EPN/DESCRIPTION	CONT/PE#	DATE	DRN	CHKD	APPR
2	RE-ISSUED FOR USE		08/20/19	SAL	NEB	GEL
1	RE-ISSUED FOR USE		08/02/19	SAL	NEB	GEL
0	ISSUED FOR USE		06/07/19	NEB	SAL	GEL
B	RE-ISSUED FOR REVIEW		03/08/19	SAL	JJD	GEL
A	ISSUED FOR REVIEW		03/01/19	SAL	JJD	GEL

EVERSOURCE ENERGY

LINE X104 115KV TRANSMISSION
 N. BRANCH RIVER WATER CROSSING
 ANTRIM, N.H.
 EXHIBIT #3

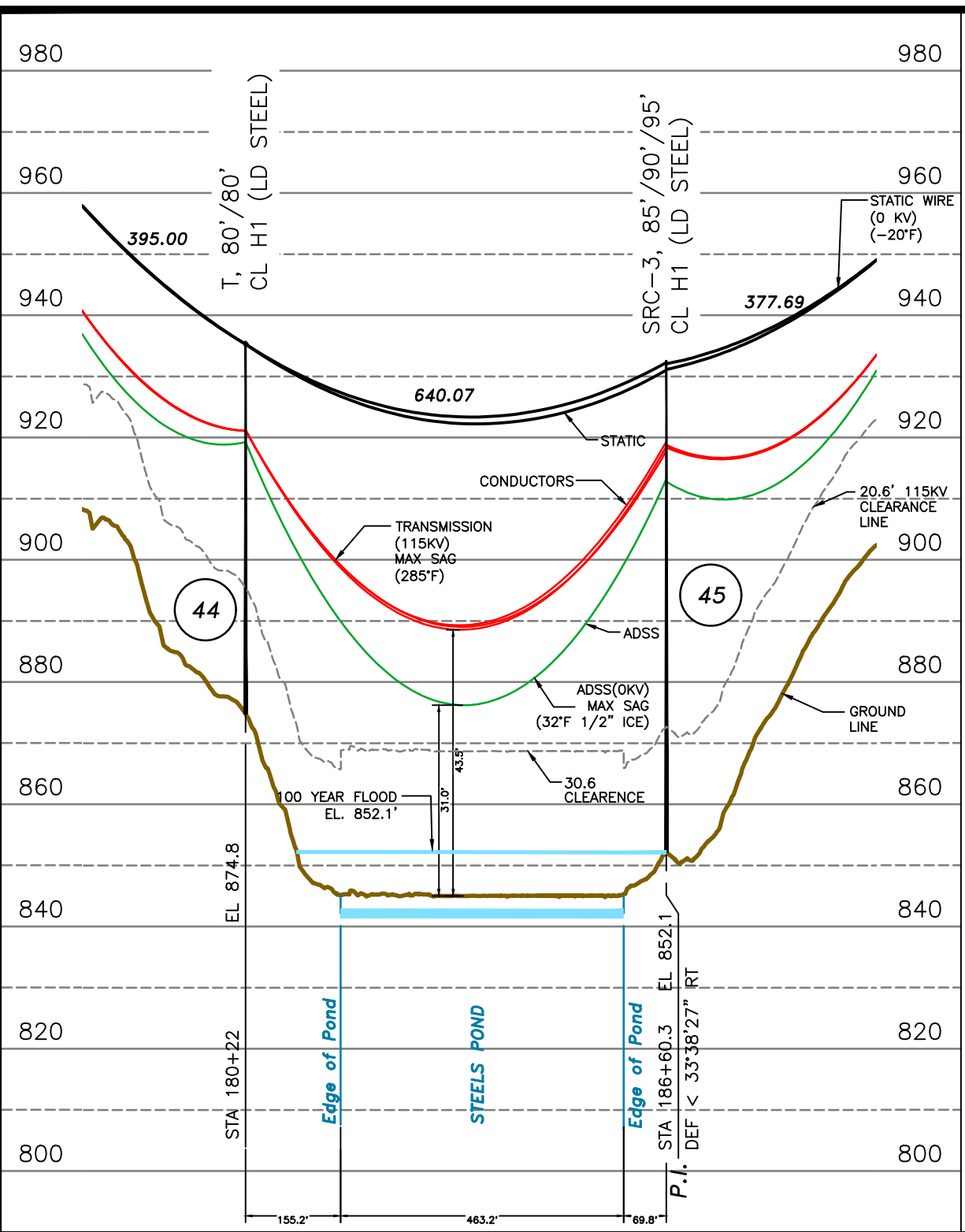
SCALE AS SHOWN	FILE: X10443902-SH04.DWG	DRAWING NO. X10443902-SH04
----------------	--------------------------	----------------------------

T 2
DRAWN SAL/TRC
ENGINEER GEL/TRC
CHECKED JUD/TRC
APPROVED GEL/TRC
DATE 02/18/19

ES VER: 12/2016

X104-SH05

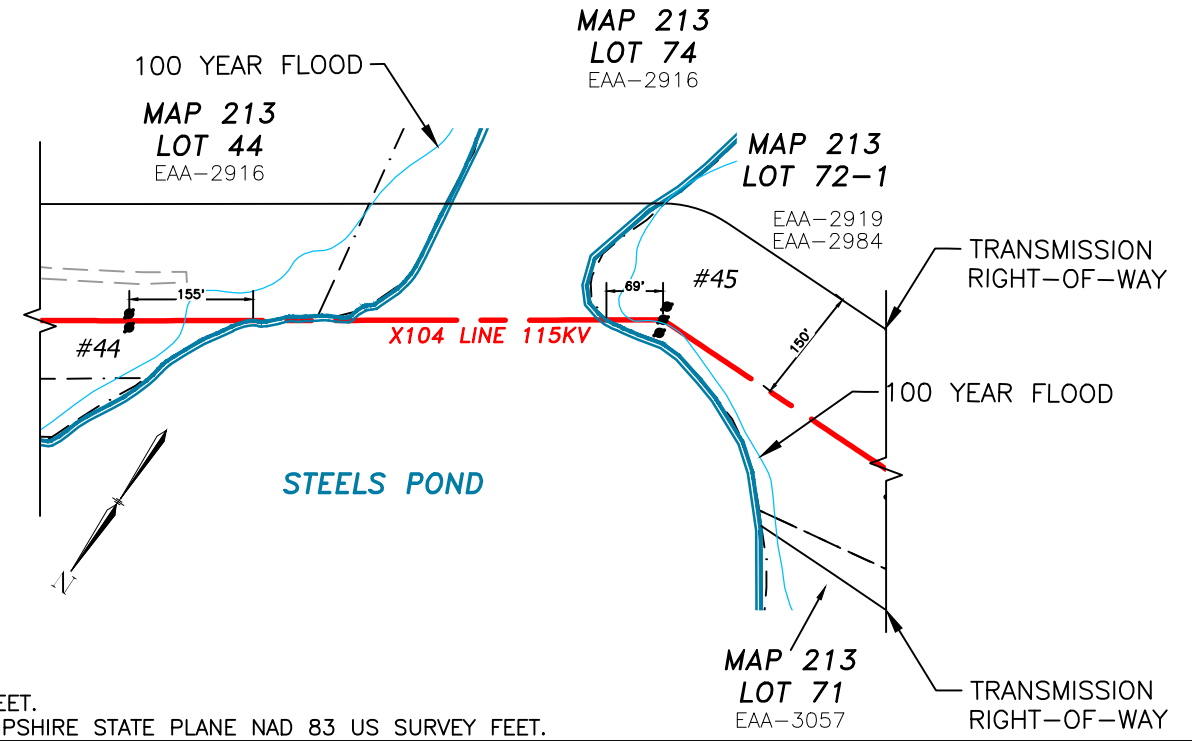
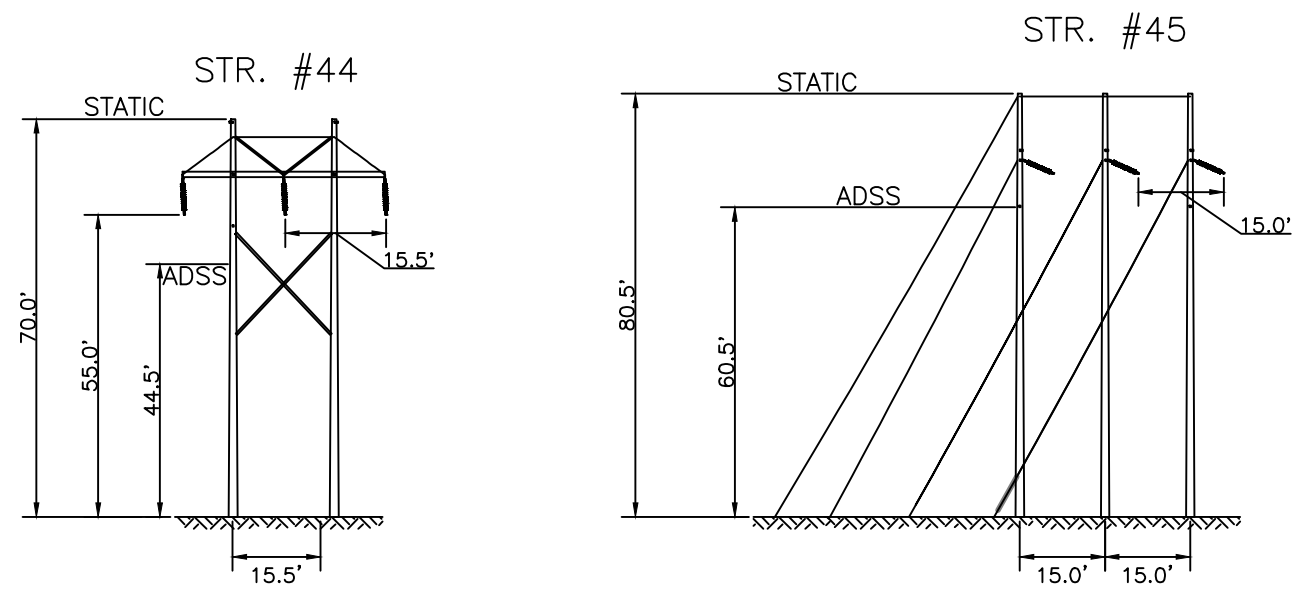
8/20/2019 8:39 AM - Slessard - C:\pwworkingemp\pw\d2576959\X10443902-SH05.dwg - X104-SH05



NOTES:

1. VERTICAL DATUM IS NAVD88 IN FEET.
2. COORDINATE SYSTEM IS NEW HAMPSHIRE STATE PLANE NAD 83 US SURVEY FEET.

TOWN OF ANTRIM, N.H.
STRUCTURES FORMERLY LINE L163



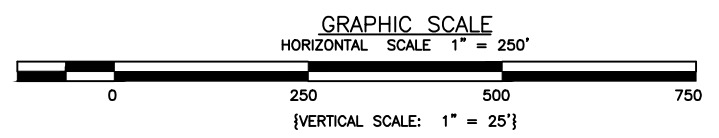
STRUCTURE LOCATION:

STR. #44 - LAT.= 43°4'37.397"N
LONG.= 71°58'10.163"W
STR. #45 - LAT.= 43°4'33.798"N
LONG.= 71°58'17.253"W

CABLE SCHEDULE:

WIRE	# OF CABLES	TYPE	DIA. (IN.)	WEIGHT/1000 FT	CABLE STRENGTH (LBS.)
STATIC	2	3#6 COPPERWELD	0.349	178	10,280
TRANSMISSION COND.	3	336.4 KCM 26/7 ACSR LINNET	0.720	462	14,100
ADSS	1	ADSS 72 FIBER	0.643	167	4,023

PROFILE LEGEND:



DWG REV	EPN/DESCRIPTION	CONT/PE#	DATE	DRN	CHKD	APPR
2	RE-ISSUED FOR USE		08/20/19	SAL	NEB	GEL
1	RE-ISSUED FOR USE		08/02/19	SAL	NEB	GEL
0	ISSUED FOR USE		06/07/19	NEB	SAL	GEL
A	ISSUED FOR REVIEW		03/15/19	SAL	JJD	GEL



LINE X104 115KV TRANSMISSION
STEELES POND WATER CROSSING
ANTRIM, N.H.
EXHIBIT #4

SCALE AS SHOWN FILE: X10443902-SH05.DWG DRAWING NO. X10443902-SH05

T	2
DRAWN	SAL/TRC
ENGINEER	GEL/TRC
CHECKED	JJD/TRC
APPROVED	GEL/TRC
DATE	03/13/19