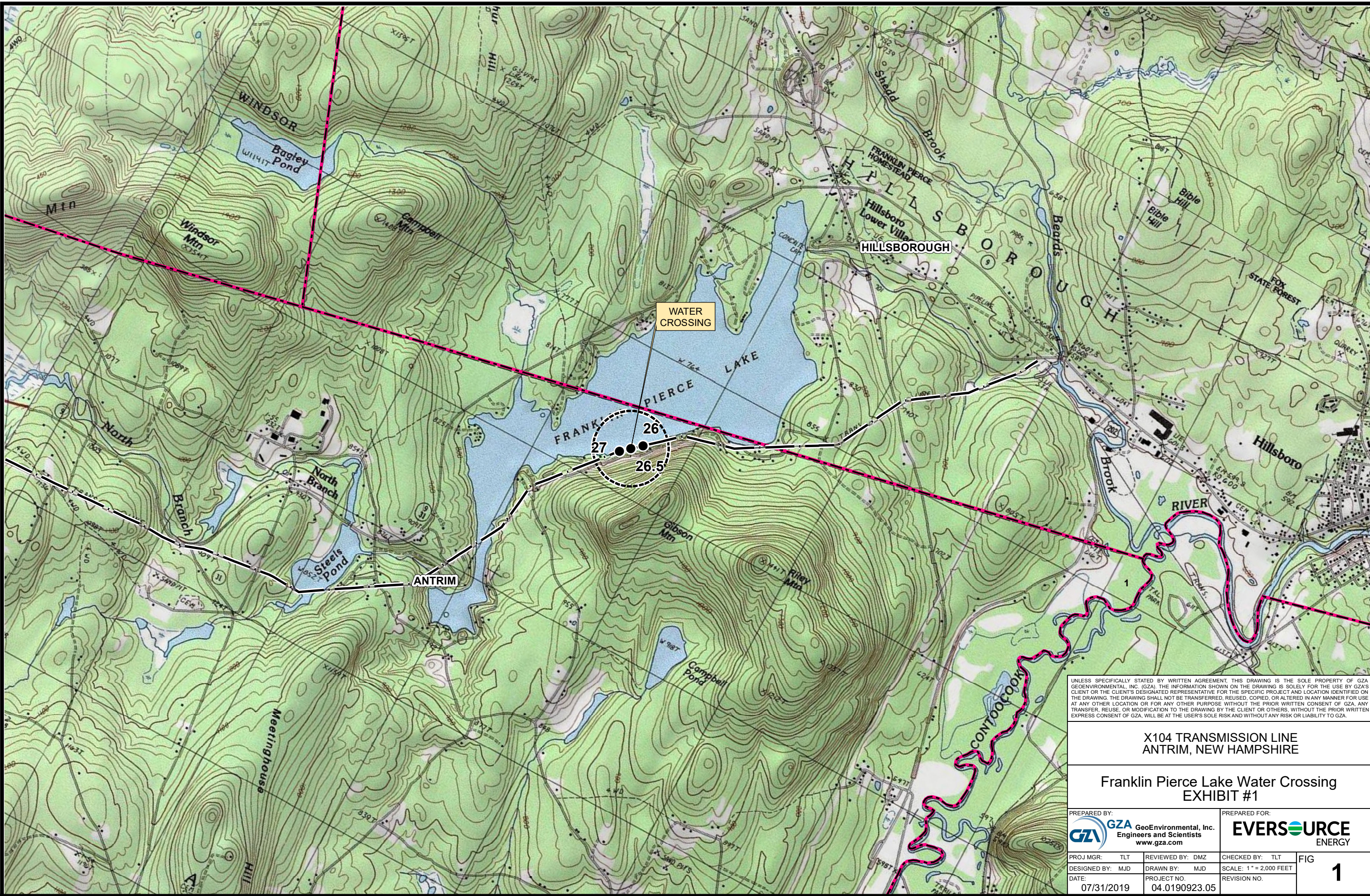


© 2019 - GZA GeoEnvironmental, Inc. C:\Users\logan\_young\Desktop\ArcGIS\194\_PUC\X104\_PUC.mxd, 7/31/2019, 8:38:37 PM, Logan Young



UNLESS SPECIFICALLY STATED BY WRITTEN AGREEMENT, THIS DRAWING IS THE SOLE PROPERTY OF GZA GEOENVIRONMENTAL, INC. (GZA). THE INFORMATION SHOWN ON THE DRAWING IS SOLELY FOR THE USE BY GZA'S CLIENT OR THE CLIENT'S DESIGNATED REPRESENTATIVE FOR THE SPECIFIC PROJECT AND LOCATION IDENTIFIED ON THE DRAWING. THE DRAWING SHALL NOT BE TRANSFERRED, REUSED, COPIED, OR ALTERED IN ANY MANNER FOR USE AT ANY OTHER LOCATION OR FOR ANY OTHER PURPOSE WITHOUT THE PRIOR WRITTEN CONSENT OF GZA. ANY TRANSFER, REUSE, OR MODIFICATION TO THE DRAWING BY THE CLIENT OR OTHERS, WITHOUT THE PRIOR WRITTEN EXPRESS CONSENT OF GZA, WILL BE AT THE USER'S SOLE RISK AND WITHOUT ANY RISK OR LIABILITY TO GZA.

**X104 TRANSMISSION LINE  
ANTRIM, NEW HAMPSHIRE**

**Franklin Pierce Lake Water Crossing  
EXHIBIT #1**

PREPARED BY:  
**GZA** GeoEnvironmental, Inc.  
Engineers and Scientists  
www.gza.com

PREPARED FOR:  
**EVERSOURCE**  
ENERGY

PROJ MGR: TLT  
DESIGNED BY: MJD  
DATE: 07/31/2019

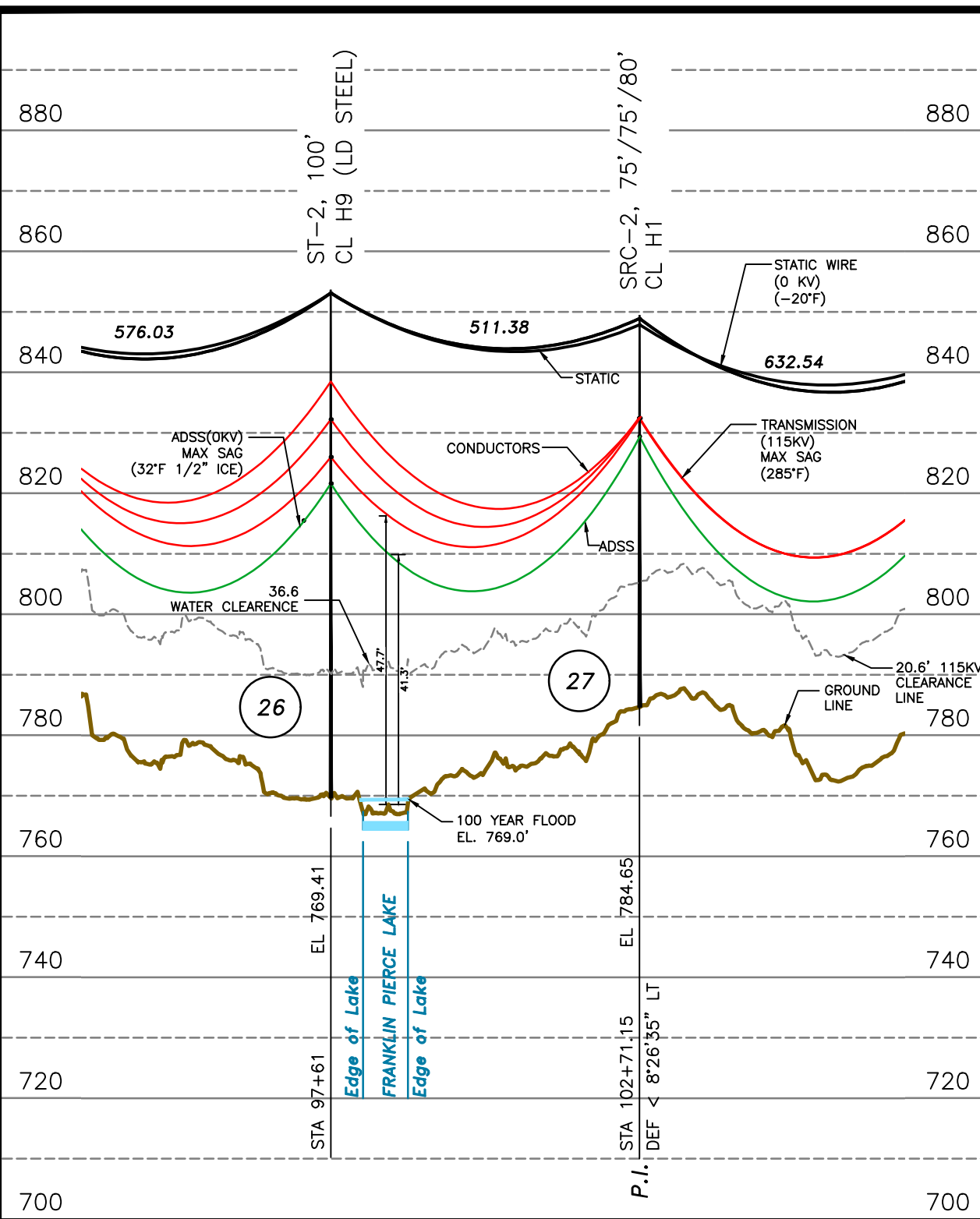
REVIEWED BY: DMZ  
DRAWN BY: MJD  
PROJECT NO: 04.0190923.05

CHECKED BY: TLT  
SCALE: 1" = 2,000 FEET  
REVISION NO.

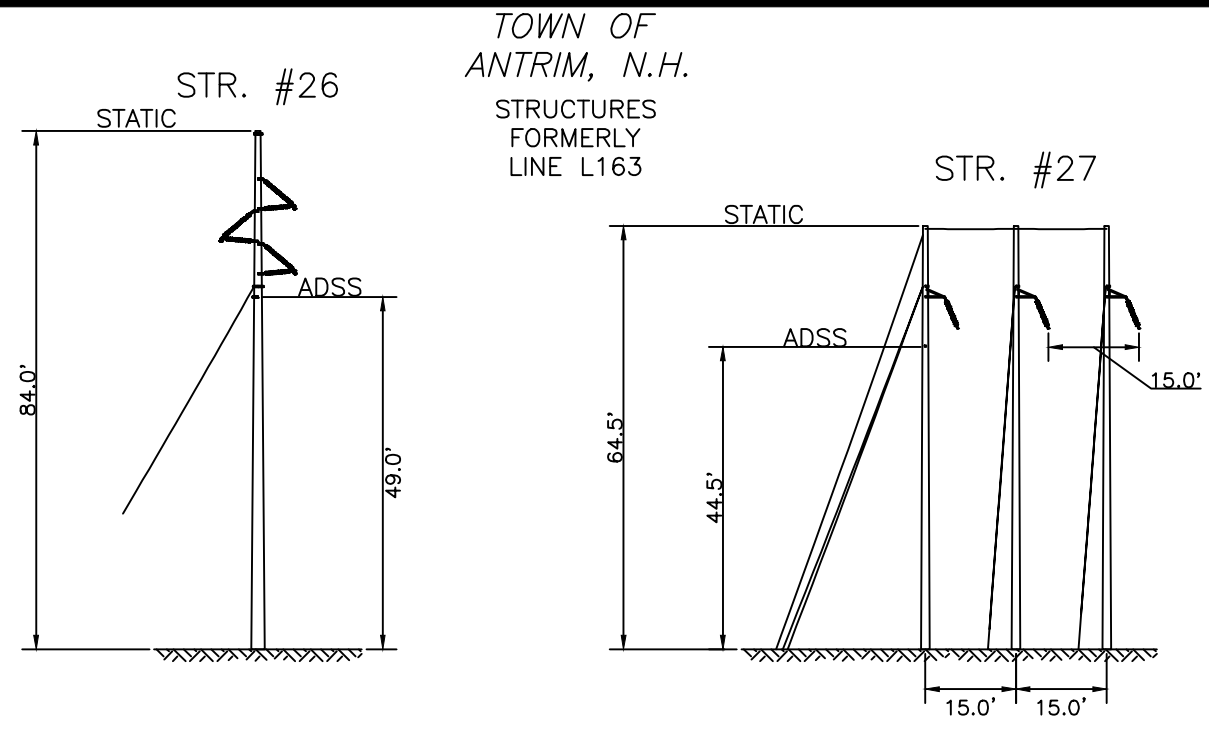
FIG  
**1**

ES VER: 12/2016

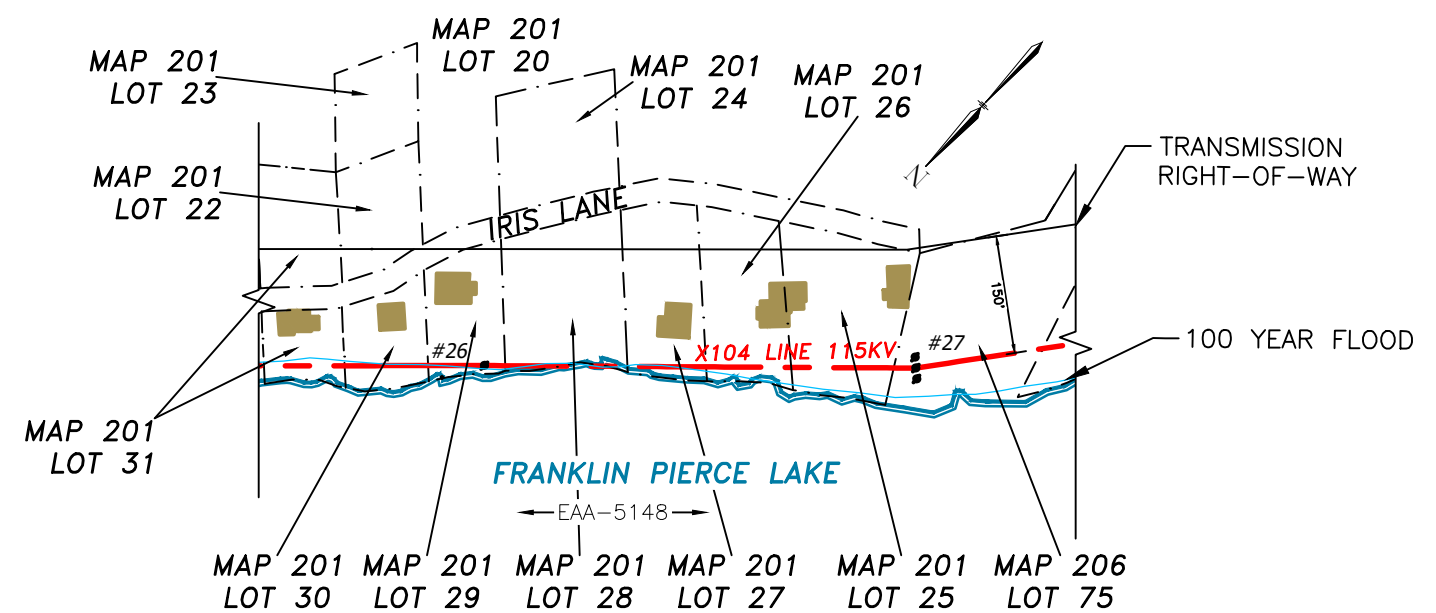
8/2/2019 12:36 PM - Slessard - C:\pwworkingemp\pw1\d2576959\X10443902-SH03.dwg - X104-SH03



NOTES:  
 1. VERTICAL DATUM IS NAVD88 IN FEET.  
 2. COORDINATE SYSTEM IS NEW HAMPSHIRE STATE PLANE NAD 83 US SURVEY FEET.



ALL ROW COVERED UNDER EAA-5148



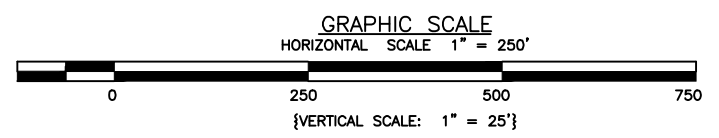
STRUCTURE LOCATION:

STR. #26 - LAT.= 43°5'41.404"N  
 LONG.= 71°57'8.342"W  
 STR. #27 - LAT.= 43°5'38.044"N  
 LONG.= 71°57'13.487"W

CABLE SCHEDULE:

WIRE	# OF CABLES	TYPE	DIA. (IN.)	WEIGHT/1000 FT	CABLE STRENGTH (LBS.)
STATIC	2	3#6 COPPERWELD	0.349	178	10,280
TRANSMISSION COND.	3	336.4 KCM 26/7 ACSR LINNET	0.720	462	14,100
ADSS	1	ADSS 72 FIBER	0.643	167	4,023

PROFILE LEGEND:



DWG REV	EPN/DESCRIPTION	CONT/PE#	DATE	DRN	CHKD	APPR
1	RE-ISSUED FOR USE		08/02/19	SAL	NEB	GEL
0	ISSUED FOR USE		06/07/19	NEB	SAL	GEL
A	ISSUED FOR REVIEW		03/15/19	SAL	JJD	GEL

**EVERSOURCE ENERGY**

LINE X104 115KV TRANSMISSION  
 FRANKLIN PIERCE LAKE WATER CROSSING  
 ANTRIM, N.H.  
 EXHIBIT #2

SCALE: AS SHOWN  
 FILE: X10443902-SH03.DWG  
 IMAGE:

T	1
DRAWN	SAL/TRC
ENGINEER	GEL/TRC
CHECKED	JJD/TRC
APPROVED	GEL/TRC
DATE	03/13/19
DRAWING NO.	X10443902-SH03