



Known for excellence.
Built on trust.

GEOTECHNICAL

ENVIRONMENTAL

ECOLOGICAL

WATER

CONSTRUCTION
MANAGEMENT

5 Commerce Park North
Suite 201
Bedford, NH 03110
T: 603.623.3600
F: 603.624.9463
www.gza.com



February 25, 2025
GZA File No. 04.0191410.39

Ms. Alani Ramas
Notification Review Specialist
NHDES Wetlands Bureau
29 Hazen Drive, P.O. Box 95
Concord, New Hampshire 03302

Re: Statutory Permit-by-Notification (SPN) File Nos. 2025-00208 & 2025-00210
NHDES Request for More Information
Geotechnical Investigation
X178-2 Transmission Line Right-of-Way, Phase 2
Easton and Lincoln, New Hampshire

Dear Ms. Ramas:

On behalf of Public Service Company of New Hampshire dba Eversource Energy (Eversource), GZA GeoEnvironmental, Inc. (GZA) is submitting this response to the New Hampshire Department of Environmental Services (NHDES) Request for More Information (RFMI) transmitted via email, dated February 19, 2025, regarding the proposed X178-2 Transmission Line Geotechnical Investigation SPN applications that were submitted to NHDES on January 29, 2025. Eversource's responses below are numbered and correspond with the attached RFMI.

1. The dimensions of the drill holes you plan to excavate for testing.

Crux, the drilling contractor, will utilize Heavy Weight Tapered (HWT) casing and Hard Quarry (HQ3) drill rods to perform the drilling/sampling at proposed locations. HWT Outside Diameter (OD) measures approximately 4.5" OD without the casing shoe and approximately 5.5" OD with casing shoes. Crux does not plan to utilize tooling larger than HWT for these borings.

2. A narrative addressing how the physical helicopter pads and work pads surrounding the drilling locations will be transferred to and from the proposed sites.

Timber/composite matting will be transferred between locations utilizing a helicopter and long line. Rigging will be attached at approved picking locations on the mats, lifted and flown to the next location, where a ground-person will be ready to receive and position the mats.

3. A detailed construction sequence, access, and timing details as it relates to wetlands and surface waters.

The attached work schedule outlines where and when Crux will be performing the work at each of the boring locations proposed.



February 25, 2025

04.0191410.39

X178-2 Transmission Line Right-of-Way, Phase 2, Geotechnical Investigations

Page | 2

The construction sequence for the geotechnical drilling operation is as follows:

- March 31 - April 1 – Drilling equipment and tooling will be mobilized to an upland laydown area in Easton, New Hampshire, approximately 2.5 miles north of the work area.
- April 1 - April 18 – Mat laying and drilling operations will commence sequentially from north to south starting at proposed Structure 274 (existing Structure 270) and ending at proposed Structure 252 (existing structure 248). Anticipated work durations at each location are provided in the attached schedule. Work may be temporarily halted during unsafe flying conditions.
- Crew ground members will be flown into the helicopter landing locations indicated on the permit plan set and will walk to the drilling locations. Crew ground-members will walk to the helicopter landing locations to be flown out of the work area at the end of each workday or as needed.
- Where required, woody vegetation will be cleared utilizing chainsaws at the landing and drilling locations.
- Matting will be flown in and out and with the help of ground support personnel placed at the drilling and helicopter landing zones.
- Spill containment polyethylene sheeting will be installed.
- Drilling equipment will be flown in via long line to each of the proposed drilling locations.
- Upon completion of drilling activities drilling equipment and matting will be removed and flown to the next work location.
- Additional details are provided in the narrative and Site Set Up/Matting Plan provided by Crux in the SPN application.

Please feel free to contact Mr. Steven Riker at 603-232-8757 or steven.riker@gza.com if you have any questions.

Very truly yours,
GZA GEOENVIRONMENTAL, INC.

A handwritten signature in black ink, appearing to be 'SR'.

Steven Riker, CWS
Senior Project Manager

A handwritten signature in black ink, appearing to be 'Deborah M. Zarta Gier'.

Deborah M. Zarta Gier, CNRP
Consultant Reviewer

SDR/DMZ:jlbb

Attachments: NHDES RFMI – February 19, 2025
Eversource Work Schedule

From: [Ramas, Alani](#)
To: [Steve Riker](#)
Cc: [Tilton, Mary Ann](#); kurt.nelson@eversource.com; [Barker-Jobin, Amanda](#); [Tracy Tarr](#); [Buchanan, Jennifer](#)
Subject: [EXTERNAL] NHDES Utility SPN More Info Needed - X178-2
Date: Wednesday, February 19, 2025 1:44:56 PM



Hello Steve,

Thank you for providing the updated communication with NHFG for your projects in Easton and Lincoln on the X178-2 for the geotechnical boring work. We will add that to your files. Per Env-Wt 521 and Env-Wt 307, please address the following questions so NHDES may better understand the scope of the project:

- The dimensions of the drill holes you plan to excavate for testing.
- A narrative addressing how the physical helicopter pads and work pads surrounding the drilling locations will be transferred to and from the proposed sites.
- A detailed construction sequence, access, and timing details as it relates to wetlands and surface waters.

Once we receive and review this information, we will notify you on the next steps.

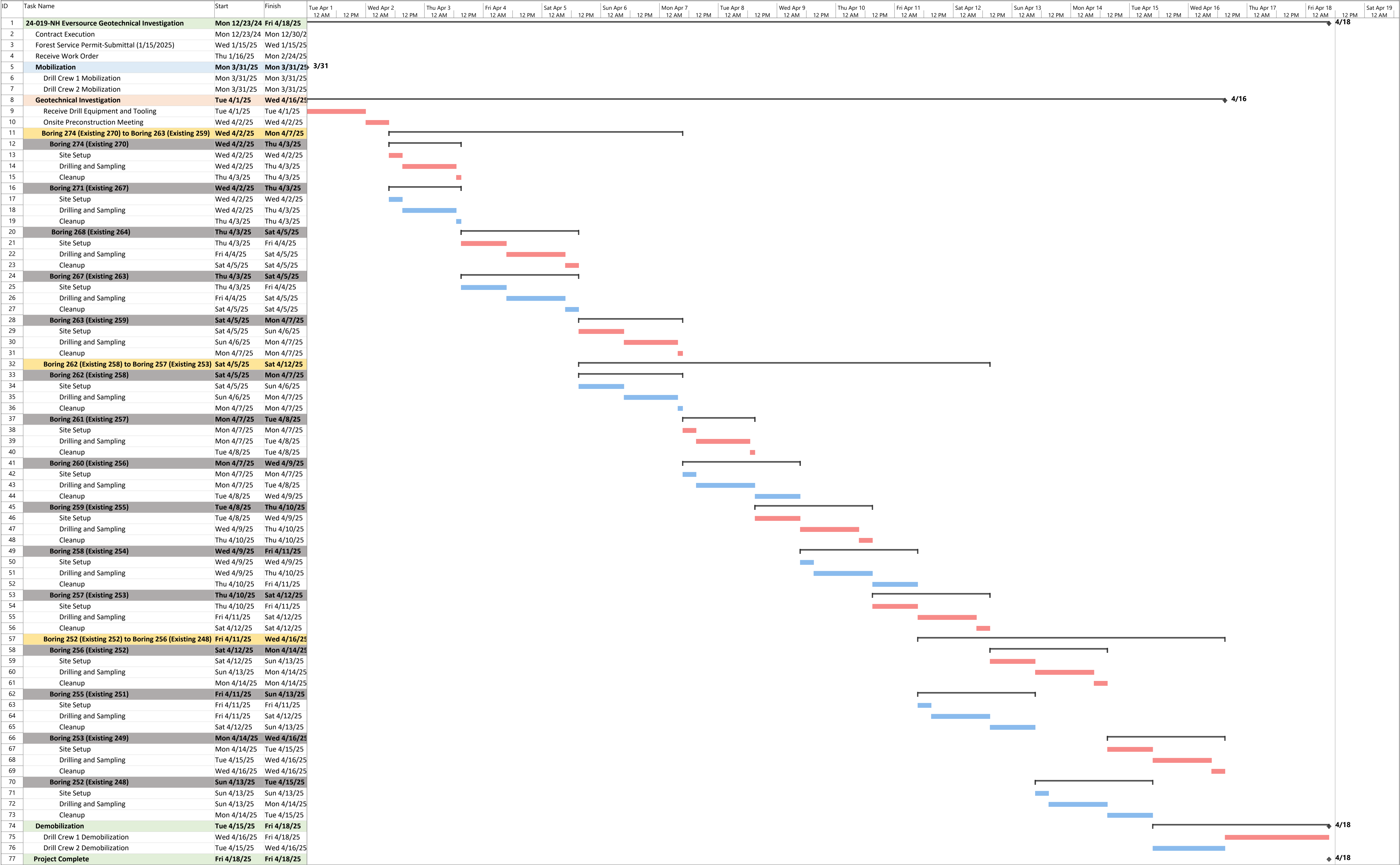
Thank you,
Alani

Alani Ramas

Notification Review Specialist
Wetlands Bureau, Land Resources Management
Water Division, NH Department of Environmental Services
Concord, NH 03302-0095
(603)271-0147
Alani.Ramas@des.nh.gov

We value your feedback. Please consider completing a 3-minute [customer satisfaction survey](#).

2/25/2025



Project: 24-019-NJ_Eversource_

Date: Tue 2/25/25

Task	<div></div>	Summary	<div></div>	Inactive Milestone	<div></div>	Duration-only	<div></div>	Start-only	<div></div>	External Milestone	<div></div>	Critical Split	<div></div>
Split	<div></div>	Project Summary	<div></div>	Inactive Summary	<div></div>	Manual Summary Rollup	<div></div>	Finish-only	<div></div>	Deadline	<div></div>	Progress	<div></div>
Milestone	<div></div>	Inactive Task	<div></div>	Manual Task	<div></div>	Manual Summary	<div></div>	External Tasks	<div></div>	Critical	<div></div>	Manual Progress	<div></div>