

# X-178 Replacement Project

Docket No. 2024-02

Final Hearing

March 4, 2025

SEC has jurisdiction over the X-178 Replacement Project because it is a “sizeable change.” RSA 162-H:5, I (emphasis added).

# SEC jurisdiction

- The “**construct[ion] any energy facility.**” RSA 162-H:5.
  - “Energy facilities” includes:
    - “... electric transmission line of a design rating in excess of 100 kilovolts that is in excess of 10 miles in length, over a route not already occupied by a transmission line.” RSA 162-H:2, I, VII.
- “sizable changes or additions to existing facilities.” RSA 162-H:5, I.

# SEC “sizable change” factors

1. The size of the existing energy facility and the size of the proposed change.
2. Whether the proposed change will require the acquisition of new land.
3. Whether the proposed change will create a change in the capacity of the facility.
4. Whether the proposed change is merely the replacement of existing components of the facility as opposed to an expansion or increase in the size of the components.
5. Whether the proposed addition or change in the facility will disrupt the existing environment.

1. The size of the existing energy facility and the size of the proposed change.

A full rebuild of the X-178 Line

a full rebuild has been recommended.

“full rebuild” approach will avoid the higher costs associated with piecemeal replacement

1. The size of the existing energy facility and the size of the proposed change.

2. Whether the proposed change will require the acquisition of new land.

## 2. Whether the proposed change will require the acquisition of new land.



Eversource is also in discussion with the U.S. Forest Service

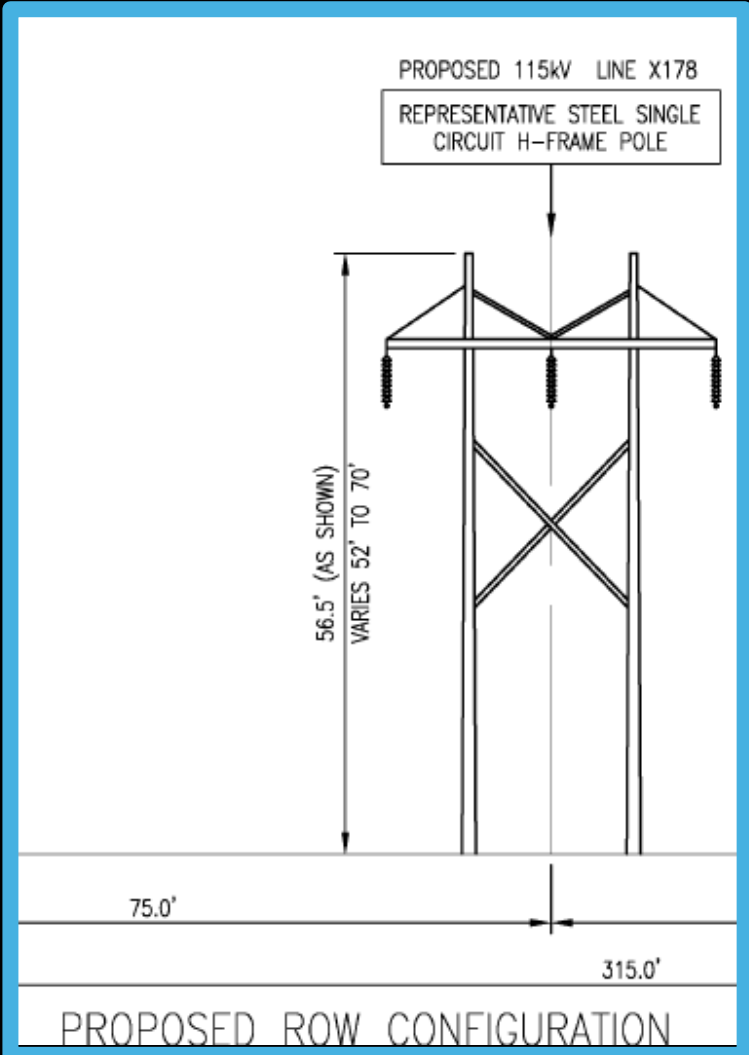
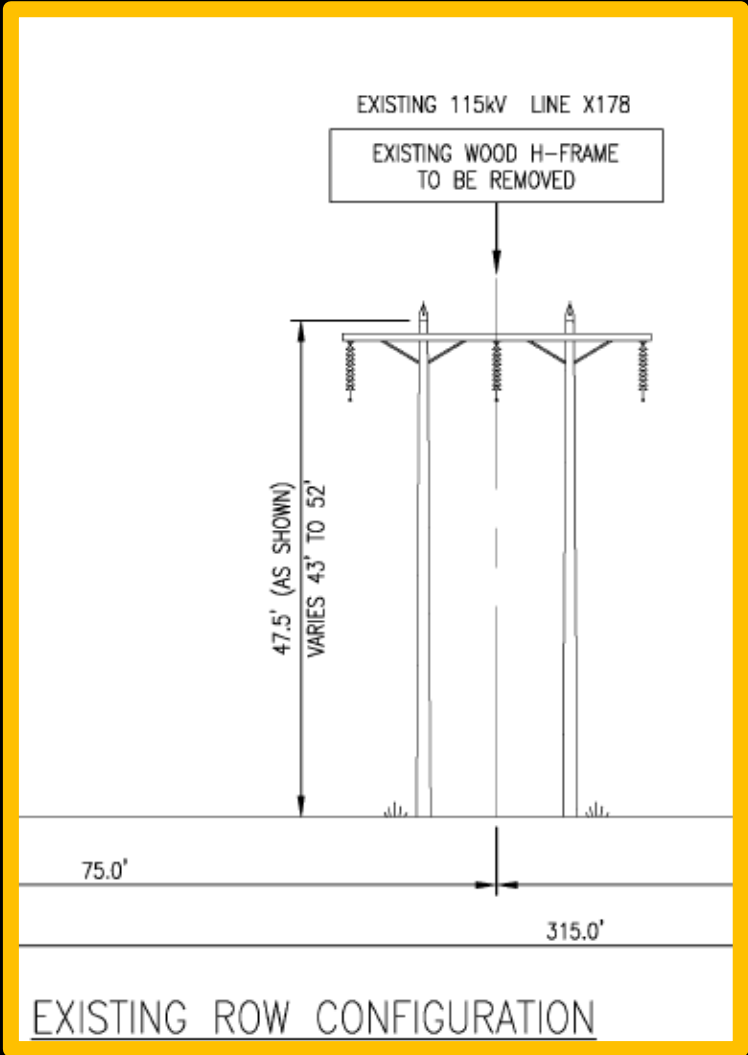
to extend an existing access road within the White Mountain National Forest



3. Whether the proposed change will create a change in the capacity of the facility.

- No, according to Eversource
- Disputed by members of the public and Towns

4. Whether the proposed change is merely the replacement of existing components of the facility as opposed to an expansion or increase in the size of the components.



4. Whether the proposed change is merely the replacement of existing components of the facility as opposed to an expansion or increase in the size of the components.

Structure Type		
	Current	Proposed
Wood	580	0
Weathering Steel	14	591
Total	594	591

Height		
	Range	Average
Current	40.1 - 70 feet	50.6 feet
Proposed	52 - 98 feet	
Increase	2.25 - 47.86 feet	13 feet
Increase Range	Number of Structures in Range	
< 10 feet	234	
10 - 20 feet	256	
20 - 30 feet	76	
30 + feet	13	

5. Whether the proposed addition or change in the facility will **disrupt the existing environment**.

5. Whether the proposed addition or change in the facility will disrupt the existing environment.



Pearl Lake Road, Sugar Hill, near Creamery Pond Rd., facing South ( $44^{\circ}12'35.1''\text{N}$   $71^{\circ}48'49.7''\text{W}$ ).



5. Whether the proposed addition or change in the facility will disrupt the existing environment.



Easton Valley Road, Rt.116, Easton, near Gingerbread Rd., facing Southeast ( $44^{\circ}07'41.5''\text{N}$   $71^{\circ}47'36.5''\text{W}$ ).

4. Whether the proposed addition or change in the facility will disrupt the existing environment.

**F-139/V-182 Transmission Line**

I-93 near exit 18, Canterbury, just south of the golf course.

Approximately 43°20'55.8"N 71°36'47.1"W.





5. Whether the proposed addition or change in the facility will disrupt the existing environment.





5. Whether the proposed addition or change in the facility will **disrupt the existing environment.**



# SEC factors indicate X-178 is a sizable change

1. The size of the existing energy facility and the size of the proposed change.
2. Whether the proposed change will require the acquisition of new land.
3. Whether the proposed change will create a change in the capacity of the facility.
4. Whether the proposed change is merely the replacement of existing components of the facility as opposed to an expansion or increase in the size of the components.
5. Whether the proposed addition or change in the facility will disrupt the existing environment.

# SEC factors indicate X-178 is a sizable change

1. The size of the existing energy facility and the size of the proposed change.
2. Whether the proposed change will require the acquisition of new land.
3. Whether the proposed change will create a change in the capacity of the facility.
4. Whether the proposed change is merely the replacement of existing components of the facility as opposed to an expansion or increase in the size of the components.
5. Whether the proposed addition or change in the facility will disrupt the existing environment.

# SEC factors indicate X-178 is a sizable change

1. The size of the existing energy facility and the size of the proposed change.
2. Whether the proposed change will require the acquisition of new land.
3. Whether the proposed change will create a change in the capacity of the facility.
4. Whether the proposed change is merely the replacement of existing components of the facility as opposed to an expansion or increase in the size of the components.
5. Whether the proposed addition or change in the facility will disrupt the existing environment.

# SEC factors indicate X-178 is a sizable change

1. The size of the existing energy facility and the size of the proposed change.
2. Whether the proposed change will require the acquisition of new land.
3. Whether the proposed change will create a change in the capacity of the facility.
4. Whether the proposed change is merely the replacement of existing components of the facility as opposed to an expansion or increase in the size of the components.
5. Whether the proposed addition or change in the facility will disrupt the existing environment.

Assuming jurisdiction aligns with SEC's purpose

RSA 162-H:1: Declaration of purpose:

“... the legislature finds that it is in the public interest to maintain a balance among those potential significant impacts and benefits in decisions about the siting, construction, and operation of energy facilities ... provide full and complete disclosure to the public of such plans ....”

Assuming jurisdiction aligns with SEC's purpose

RSA 162-H:1: Declaration of purpose:

“... the legislature finds that it is in the public interest to maintain a balance among those potential significant impacts and benefits in decisions about the siting, construction, and operation of energy facilities ... provide full and complete disclosure to the public of such plans ....”

Assuming jurisdiction aligns with SEC's purpose

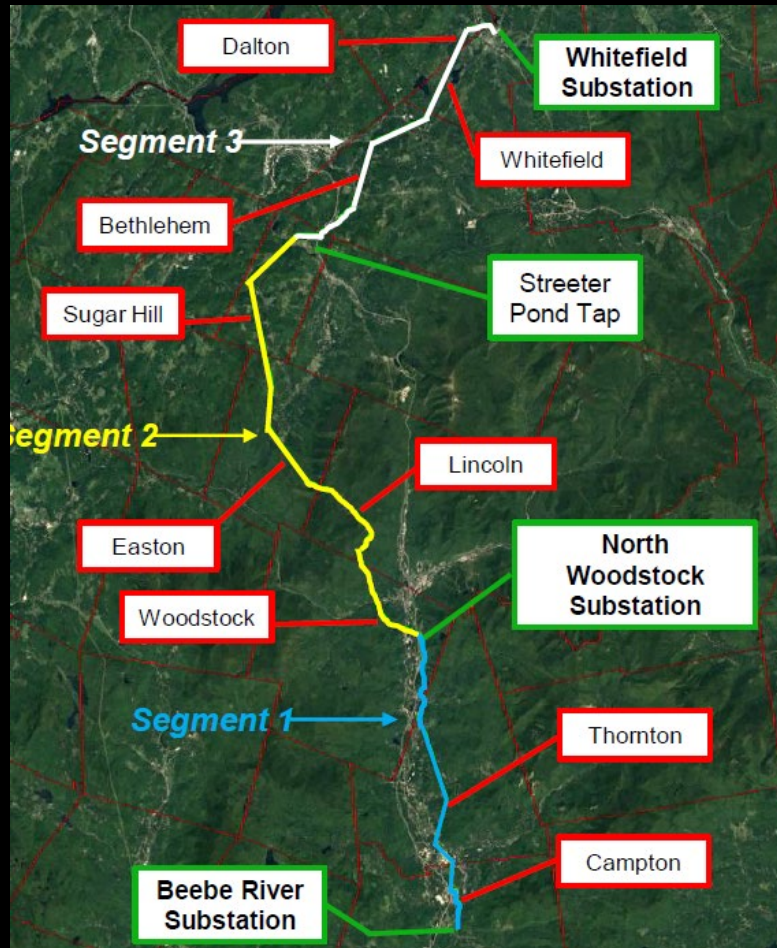
RSA 162-H:1: Declaration of purpose:

“... the legislature finds that it is in the public interest to maintain a balance among those potential significant impacts and benefits in decisions about the siting, construction, and operation of energy facilities ... provide full and complete disclosure to the public of such plans ....”



Assuming jurisdiction aligns with SEC's purpose

# Assuming jurisdiction aligns with SEC's purpose

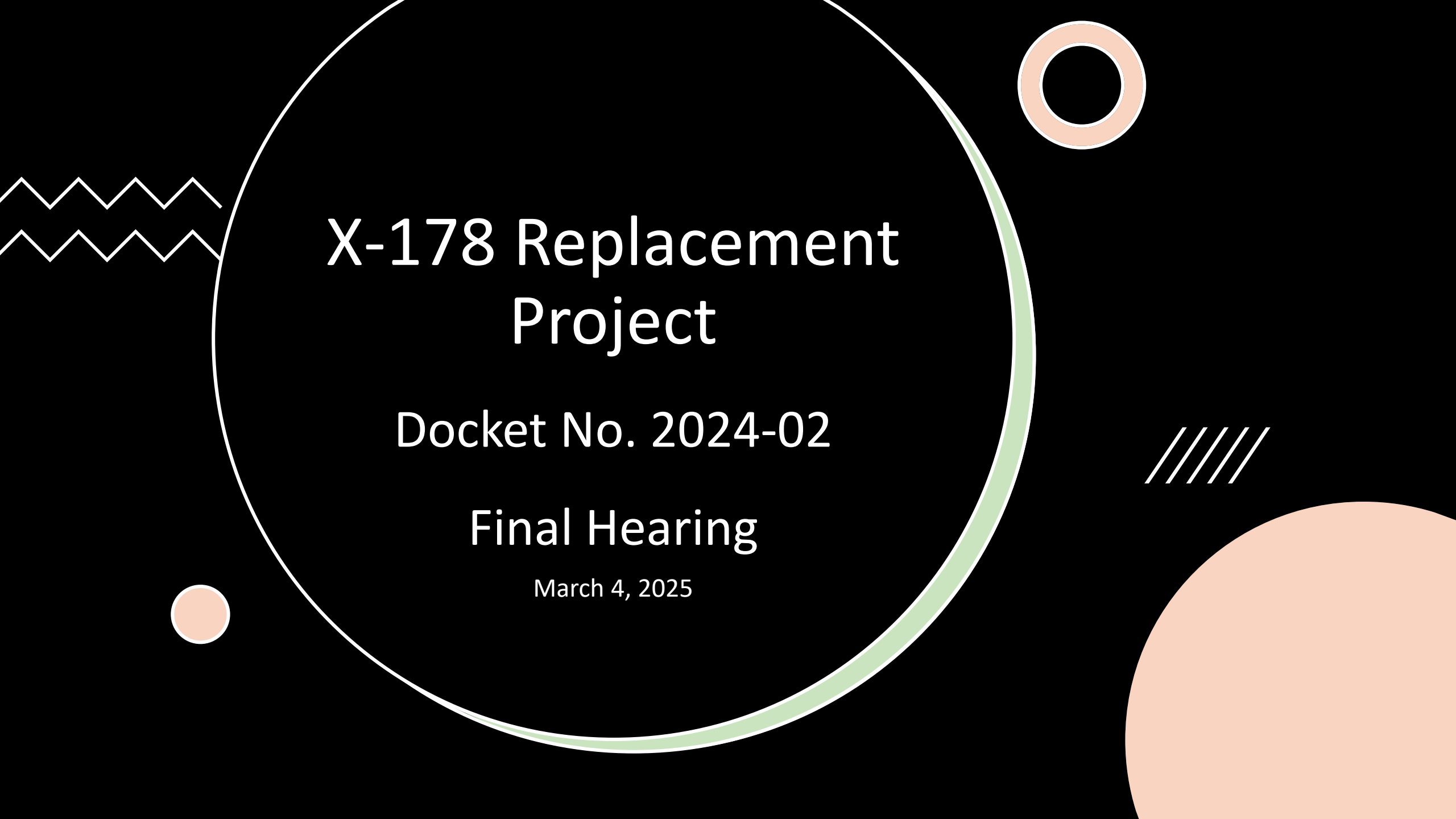


- **X-178 Project:** Complete replacement of 115 kilovolt transmission line, 49 miles long
- **New energy facility:** “electric transmission line ... in excess of 100 kilovolts ... in excess of 10 miles in length, over a route not already occupied by a transmission line.” RSA 162-H:2, VII.

Assuming jurisdiction aligns with SEC's purpose

RSA 162-H:1: Declaration of purpose:

“... the legislature finds that it is in the public interest to maintain a balance among those potential significant impacts and benefits in decisions about the siting, construction, and operation of energy facilities ... provide full and complete disclosure to the public of such plans ....”



# X-178 Replacement Project

Docket No. 2024-02

Final Hearing

March 4, 2025

## RSA 162-H Time Provisions

- “Within 365 days of the acceptance of an application, the committee shall issue or deny a certificate for an energy facility.” RSA 162-H:7, VI-d (emphasis added).
  - “All state agencies having permitting or other regulatory authority shall report their progress to the committee within 150 days of the acceptance of the application, outlining draft permit conditions and specifying additional data requirements necessary to make a final decision on the parts of the application that relate to its permitting or other regulatory authority.” RSA 162-H:7, VI-b (emphasis added).
  - “All state agencies having permitting or other regulatory authority shall make and submit to the committee a final decision on the parts of the application that relate to its permitting and other regulatory authority, no later than 240 days after the application has been accepted.” RSA 162-H:7, VI-c (emphasis added).