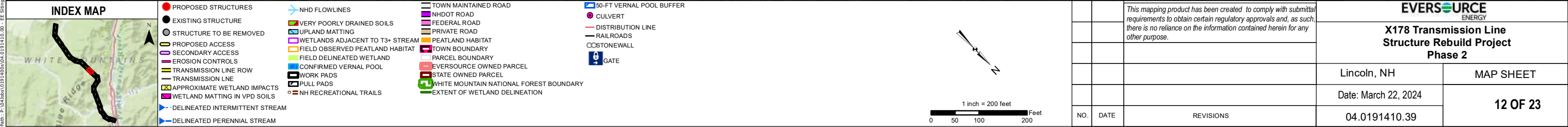
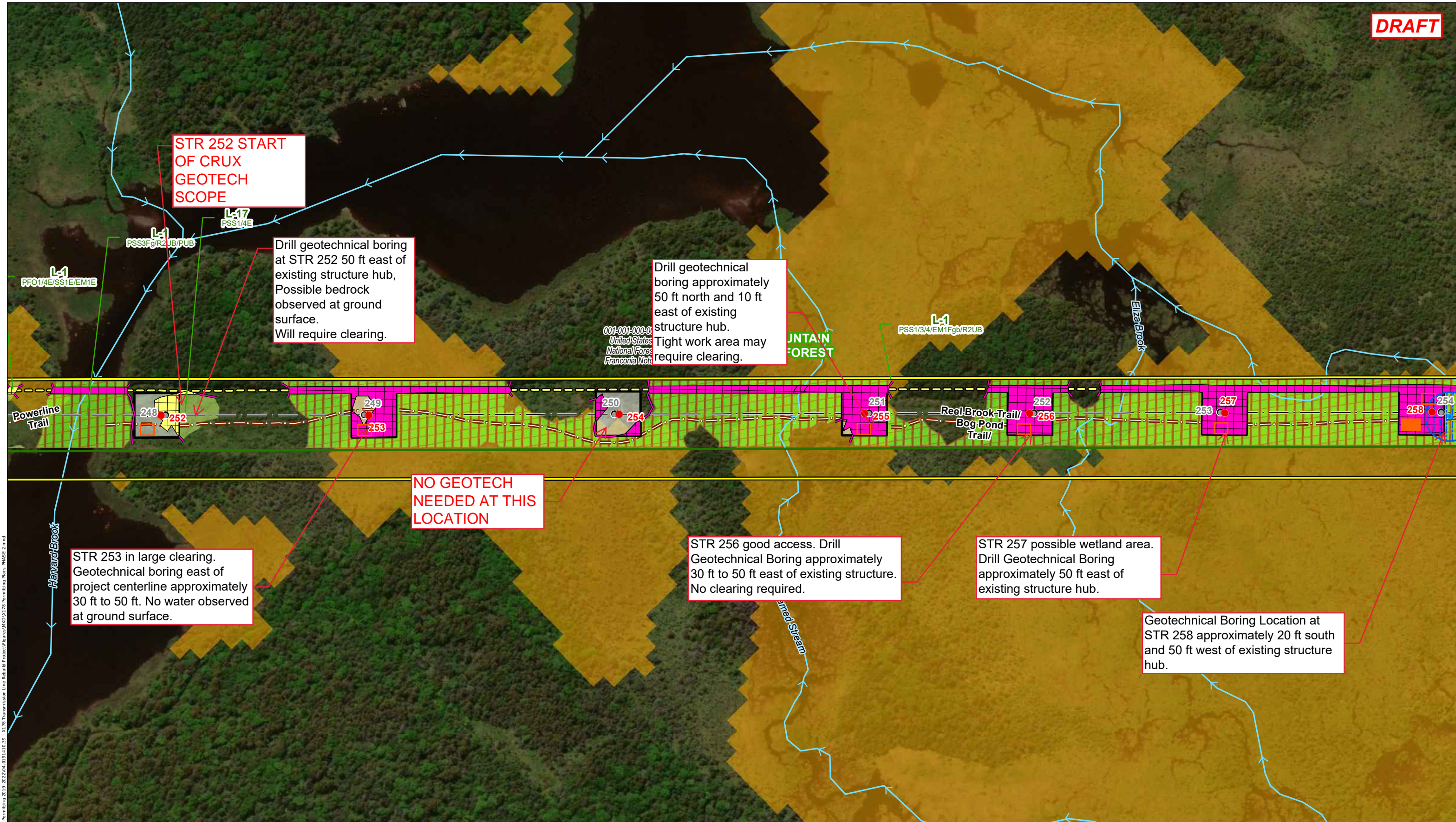


For all geotechnical boring locations:  
Geotechnical work area approximately 30ft x 30ft area. Crux can bring matting to support work and equipment.  
Geotechnical borings will be approximately 35 ft to 50 ft from project centerline except were noted.  
Existing structure hub is defined as the intersection of the center conductor and the H-frame cross beam.  
Crux will place all equipment by helicopter with no equipment tracking between borings.  
Foliage must be stripped to approximate ground surface prior to drill equipment placement for safety.  
Crux understands no trees larger than 3 inches in diameter can be removed without Eversource approval.  
Eversource added locations for the 30 by 30 workpads in orange based on comments provided by Crux. These locations are approximate and may vary slightly based on field conditions while staying within the confines of the project permitted workpads for each structure.







Path: P:\Jobs\1091400\1091400\1091410.00 - EE Siting Permitting 2019-2023\04.091410.39 - X178 Transmission Line Rebuild Project\Figures\X178 Permitting Plans PHASE 2.mxd

**INDEX MAP**

**LEGEND**

● PROPOSED STRUCTURES

● EXISTING STRUCTURE

○ STRUCTURE TO BE REMOVED

— PROPOSED ACCESS

— SECONDARY ACCESS

— EROSION CONTROLS

— TRANSMISSION LINE ROW

— TRANSMISSION LINE

— APPROXIMATE WETLAND IMPACTS

— WETLAND MATTING IN VPD SOILS

— DELINEATED INTERMITTENT STREAM

— DELINEATED PERENNIAL STREAM

— NHD FLOWLINES

— VERY POORLY DRAINED SOILS

— UPLAND MATTING

— WETLANDS ADJACENT TO T3+ STREAM

— FIELD OBSERVED PEATLAND HABITAT

— FIELD DELINEATED WETLAND

— CONFIRMED VERNAL POOL

— WORK PADS

— PULL PADS

— NH RECREATIONAL TRAILS

— TOWN MAINTAINED ROAD

— NHDOT ROAD

— FEDERAL ROAD

— PRIVATE ROAD

— PEATLAND HABITAT

— TOWN BOUNDARY

— PARCEL BOUNDARY

— EVERSOURCE OWNED PARCEL

— STATE OWNED PARCEL

— WHITE MOUNTAIN NATIONAL FOREST BOUNDARY

— EXTENT OF WETLAND DELINEATION

— 50-FT VERNAL POOL BUFFER

— CULVERT

— DISTRIBUTION LINE

— RAILROADS

— STONEWALL

— GATE

This mapping product has been created to comply with submittal requirements to obtain certain regulatory approvals and, as such, there is no reliance on the information contained herein for any other purpose.

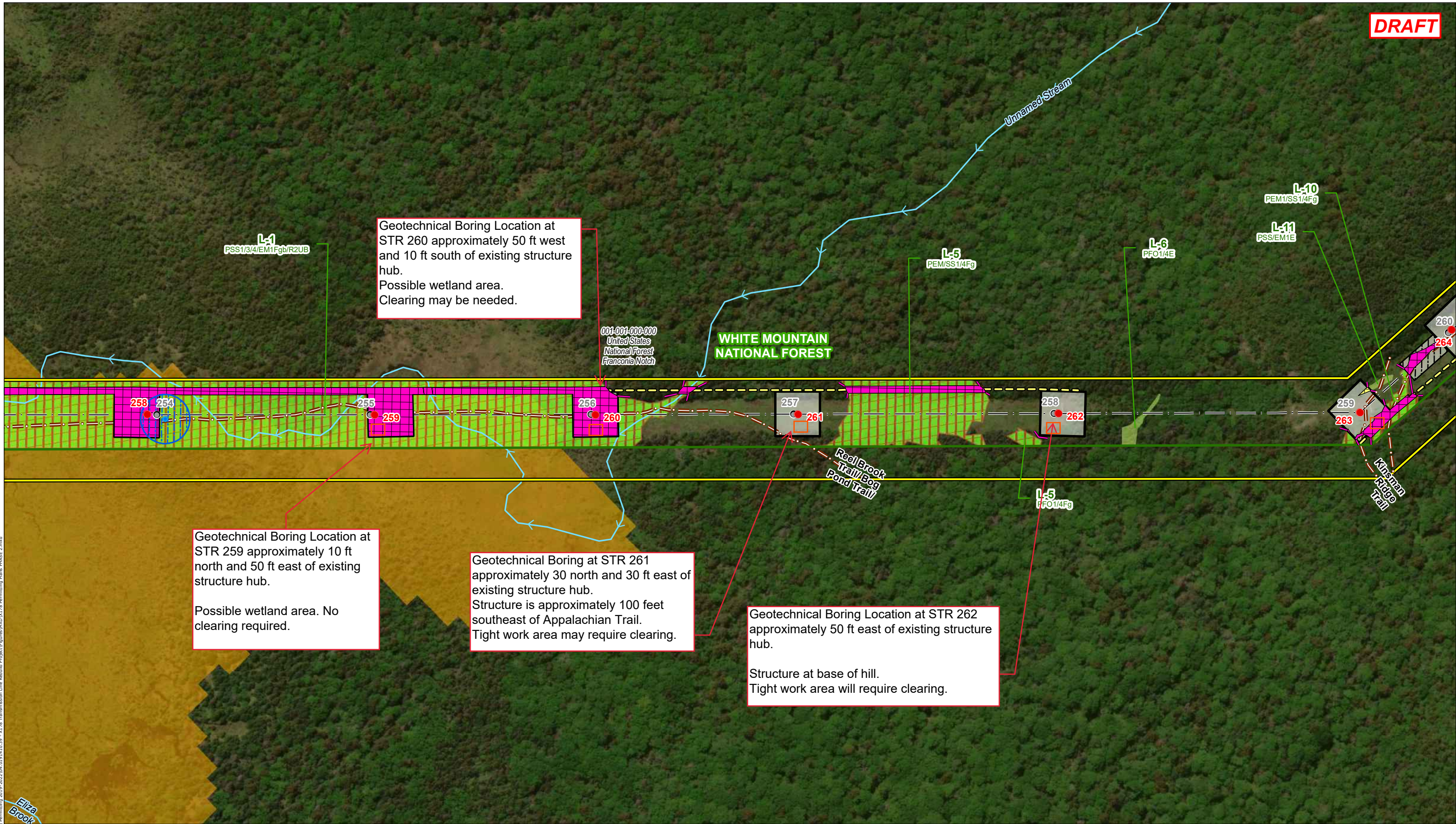
**EVERSOURCE ENERGY**

**X178 Transmission Line Structure Rebuild Project Phase 2**

Lincoln, NH	MAP SHEET
Date: March 22, 2024	13 OF 23
04.0191410.39	

NO.	DATE	REVISIONS





Path: P:\Jobs\01914001\04.0191410.00 - EE Siting Permitting 2019-2022\04.0191410.39 - X178 Transmission Line Rebuild Project\Figures\MXD\X178 Permitting Plans PHASE 2.mxd

INDEX MAP

PROPOSED STRUCTURES

- EXISTING STRUCTURE
- STRUCTURE TO BE REMOVED
- PROPOSED ACCESS
- SECONDARY ACCESS
- EROSION CONTROLS
- TRANSMISSION LINE ROW
- TRANSMISSION LINE
- APPROXIMATE WETLAND IMPACTS
- WETLAND MATTING IN VPD SOILS
- DELINEATED INTERMITTENT STREAM
- DELINEATED PERENNIAL STREAM

NHD FLOWLINES

- VERY POORLY DRAINED SOILS
- UPLAND MATTING
- WETLANDS ADJACENT TO T3+ STREAM
- FIELD OBSERVED PEATLAND HABITAT
- FIELD DELINEATED WETLAND
- CONFIRMED VERNAL POOL
- WORK PADS
- PULL PADS
- NH RECREATIONAL TRAILS

TOWN MAINTAINED ROAD

- NHDOT ROAD
- FEDERAL ROAD
- PRIVATE ROAD
- PEATLAND HABITAT
- TOWN BOUNDARY
- PARCEL BOUNDARY
- EVERSOURCE OWNED PARCEL
- STATE OWNED PARCEL
- WHITE MOUNTAIN NATIONAL FOREST BOUNDARY
- EXTENT OF WETLAND DELINEATION

50-FT VERNAL POOL BUFFER

- CULVERT
- DISTRIBUTION LINE
- RAILROADS
- STONEWALL
- GATE

1 inch = 200 feet

NO.	DATE	REVISIONS

EVERSOURCE ENERGY

X178 Transmission Line Structure Rebuild Project Phase 2

Lincoln, NH

Date: March 22, 2024

04.0191410.39

MAP SHEET

14 OF 23

This mapping product has been created to comply with submittal requirements to obtain certain regulatory approvals and, as such, there is no reliance on the information contained herein for any other purpose.



NO GEOTECH  
NEEDED AT THIS  
LOCATION

NO GEOTECH  
NEEDED AT THIS  
LOCATION

NO GEOTECH  
NEEDED AT THIS  
LOCATION

NO GEOTECH  
NEEDED AT THIS  
LOCATION

NO GEOTECH  
NEEDED AT THIS  
LOCATION

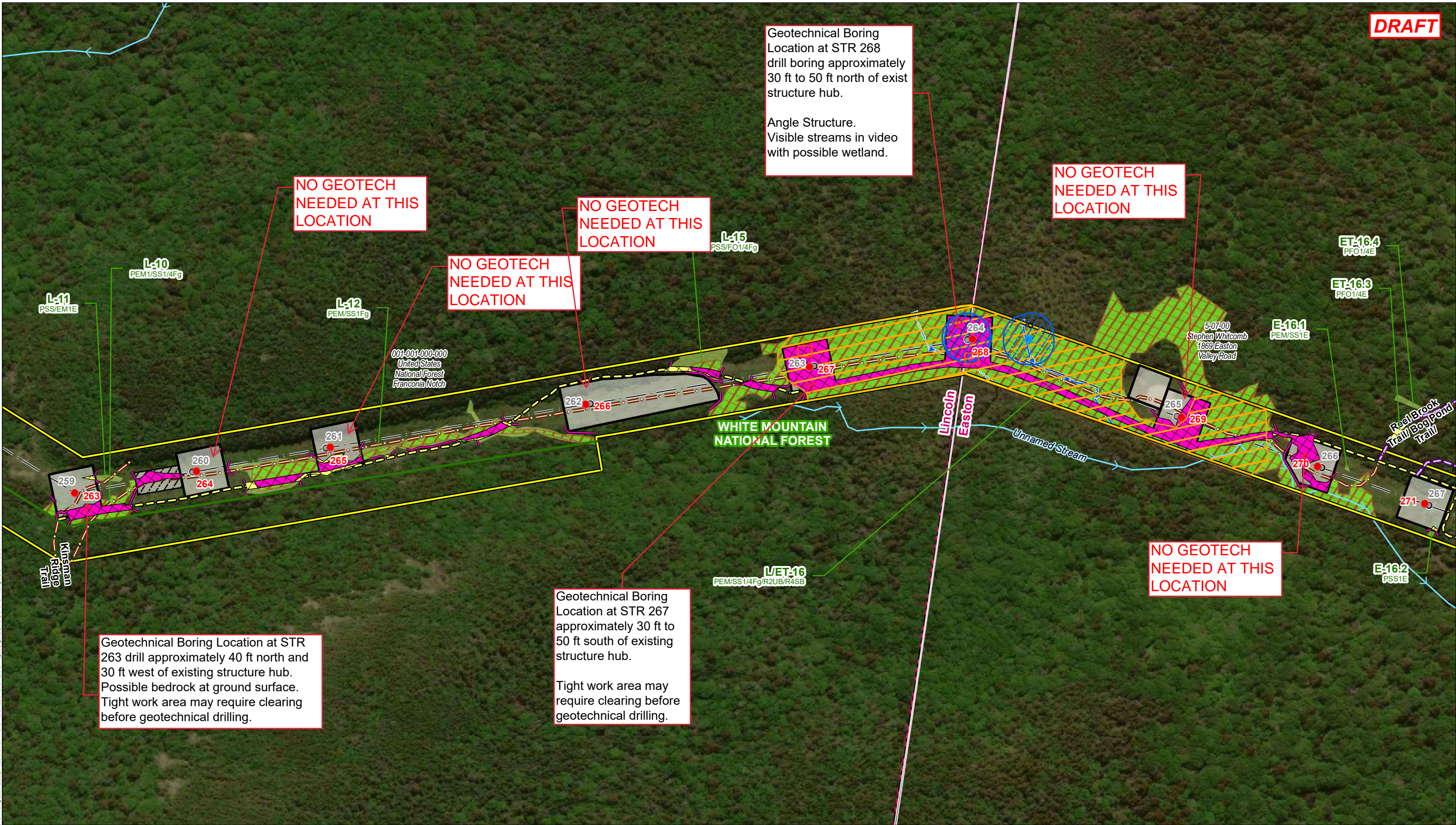
Geotechnical Boring  
Location at STR 268  
drill boring approximately  
30 ft to 50 ft north of exist  
structure hub.

Angle Structure.  
Visible streams in video  
with possible wetland.

Geotechnical Boring  
Location at STR 267  
approximately 30 ft to  
50 ft south of existing  
structure hub.

Tight work area may  
require clearing before  
geotechnical drilling.

Geotechnical Boring Location at STR  
263 drill approximately 40 ft north and  
30 ft west of existing structure hub.  
Possible bedrock at ground surface.  
Tight work area may require clearing  
before geotechnical drilling.



Path: P:\Jobs\1091400\1091410.00 - EE Siting Permitting 2019 - 2022\04.0191410.39 - X178 Transmission Line Rebuild Project\Figures\MXD\X178 Permitting Plans PHASE 2.mxd

**INDEX MAP**

**LEGEND**

● PROPOSED STRUCTURES

● EXISTING STRUCTURE

■ STRUCTURE TO BE REMOVED

— PROPOSED ACCESS

— SECONDARY ACCESS

— EROSION CONTROLS

— TRANSMISSION LINE ROW

— TRANSMISSION LINE

■ APPROXIMATE WETLAND IMPACTS

■ WETLAND MATTING IN VPD SOILS

— DELINEATED INTERMITTENT STREAM

— DELINEATED PERENNIAL STREAM

— NHD FLOWLINES

■ VERY POORLY DRAINED SOILS

■ UPLAND MATTING

■ WETLANDS ADJACENT TO T3+ STREAM

■ FIELD OBSERVED PEATLAND HABITAT

■ FIELD DELINEATED WETLAND

■ CONFIRMED VERNAL POOL

■ WORK PADS

■ PULL PADS

● NH RECREATIONAL TRAILS

— TOWN MAINTAINED ROAD

— NHDOT ROAD

— FEDERAL ROAD

— PRIVATE ROAD

— PEATLAND HABITAT

— TOWN BOUNDARY

— PARCEL BOUNDARY

■ EVERSOURCE OWNED PARCEL

■ STATE OWNED PARCEL

■ WHITE MOUNTAIN NATIONAL FOREST BOUNDARY

— EXTENT OF WETLAND DELINEATION

■ 50-FT VERNAL POOL BUFFER

● CULVERT

— DISTRIBUTION LINE

— RAILROADS

— STONEWALL

■ GATE

1 inch = 200 feet

0 50 100 200 Feet

NO. DATE REVISIONS

This mapping product has been created to comply with submittal requirements to obtain certain regulatory approvals and, as such, there is no reliance on the information contained herein for any other purpose.

**EVSOURCE**  
ENERGY

**X178 Transmission Line  
Structure Rebuild Project  
Phase 2**

Lincoln/Easton, NH

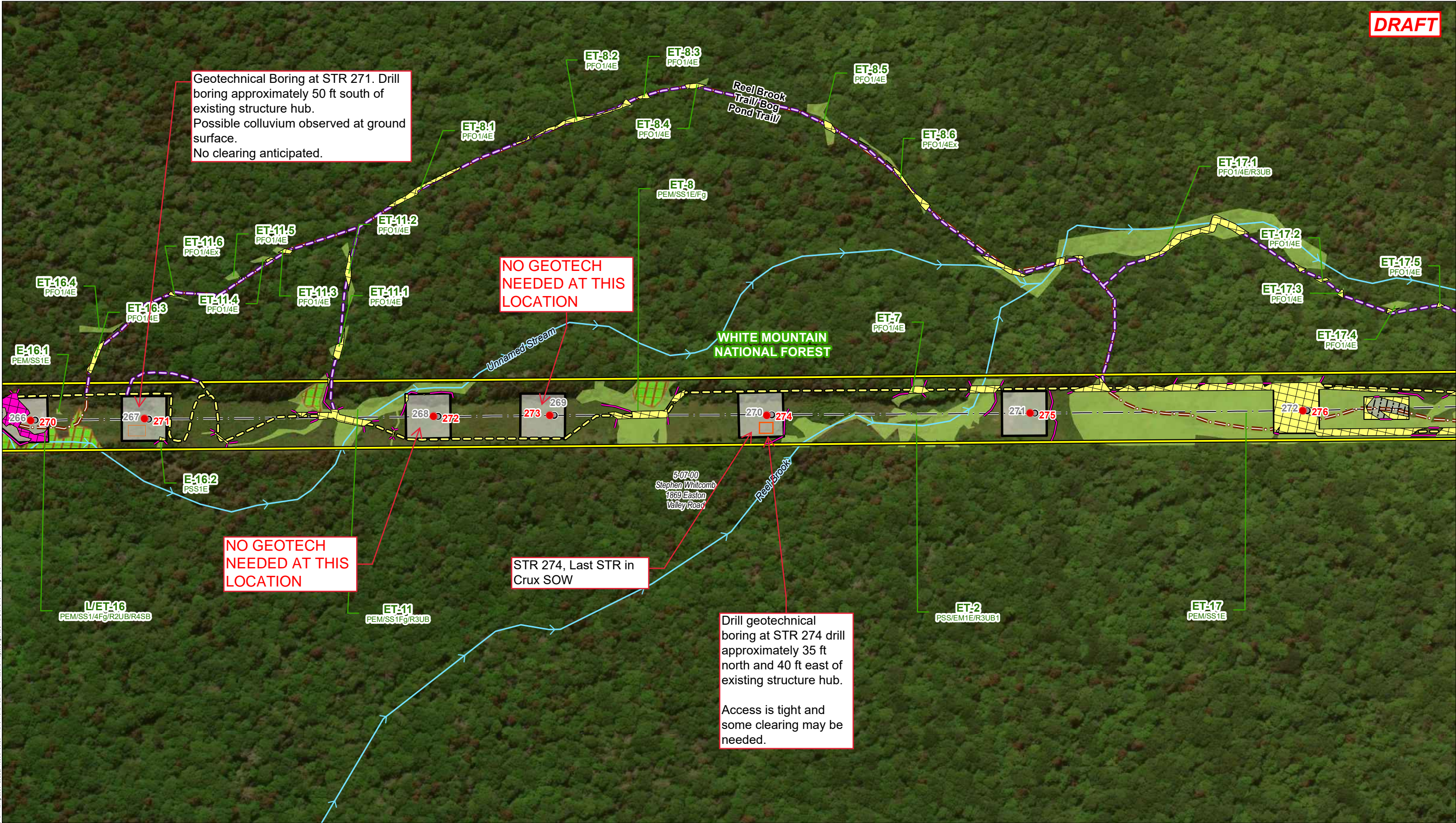
Date: March 22, 2024

04.0191410.39

MAP SHEET

15 OF 23





**INDEX MAP**

**LEGEND**

● PROPOSED STRUCTURES

● EXISTING STRUCTURE

○ STRUCTURE TO BE REMOVED

— PROPOSED ACCESS

— SECONDARY ACCESS

— EROSION CONTROLS

— TRANSMISSION LINE ROW

— TRANSMISSION LINE

— APPROXIMATE WETLAND IMPACTS

— WETLAND MATTING IN VPD SOILS

— DELINEATED INTERMITTENT STREAM

— DELINEATED PERENNIAL STREAM

— NHD FLOWLINES

— VERY POORLY DRAINED SOILS

— UPLAND MATTING

— WETLANDS ADJACENT TO T3+ STREAM

— FIELD OBSERVED PEATLAND HABITAT

— FIELD DELINEATED WETLAND

— CONFIRMED VERNAL POOL

— WORK PADS

— PULL PADS

— NH RECREATIONAL TRAILS

— TOWN MAINTAINED ROAD

— NHDOT ROAD

— FEDERAL ROAD

— PRIVATE ROAD

— PEATLAND HABITAT

— TOWN BOUNDARY

— PARCEL BOUNDARY

— EVERSOURCE OWNED PARCEL

— STATE OWNED PARCEL

— WHITE MOUNTAIN NATIONAL FOREST BOUNDARY

— EXTENT OF WETLAND DELINEATION

— 50-FT VERNAL POOL BUFFER

— CULVERT

— DISTRIBUTION LINE

— RAILROADS

— STONEWALL

— GATE

1 inch = 200 feet

0 50 100 200 Feet

		This mapping product has been created to comply with submittal requirements to obtain certain regulatory approvals and, as such, there is no reliance on the information contained herein for any other purpose.
NO.	DATE	REVISIONS

**EVSOURCE**  
ENERGY

**X178 Transmission Line  
Structure Rebuild Project  
Phase 2**

Easton, NH

Date: March 22, 2024

04.0191410.39

MAP SHEET

16 OF 23