

# Beebe River to Whitefield (X178) Line Rebuild Project

EVERSOURCE

Improving the Reliability of the Electric System across New Hampshire

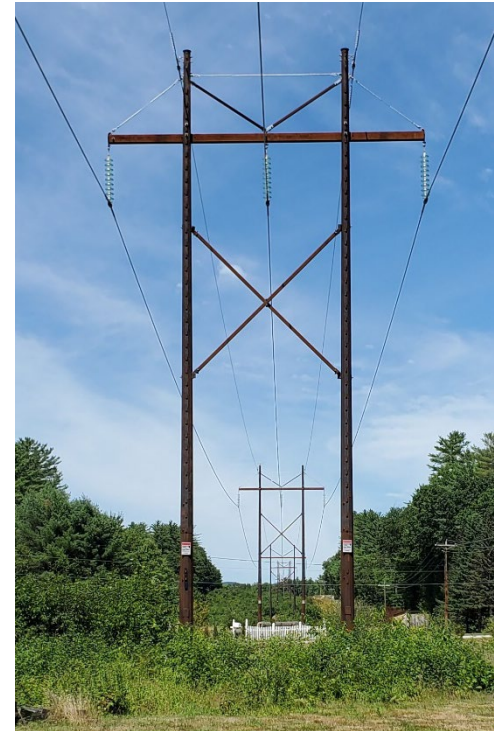
## Project Overview

As part of our ongoing investments to deliver reliable energy to our customers and communities, Eversource will be replacing existing wooden pole structures, in Campton, Thornton, Lincoln, Woodstock, Easton, Sugar Hill, Bethlehem, Dalton and Whitefield, N.H.

- This work will be taking place within the existing right-of-way (power line corridor) of the X178 Line, a 115-kV transmission line.
- The line is 49 miles long and is located between the Beebe River Substation in Campton, and the Whitefield Substation in Whitefield, N.H.
- In total, 570 wooden H-frame structures will be replaced, new conductor (power line) and fiber optic cable, known as Optical Ground Wire (OPGW) will be installed the length of the line.
- This project will be split into three segments (map on reverse of this sheet) with overlapping construction schedules in order to complete work in a safe and efficient manner.

## Always Working to Serve You Better

Eversource is making a significant investment in electric infrastructure in order to provide enhanced system reliability for local communities. The new steel structures will be more resilient and less susceptible to woodpecker damage, insect damage and pole rot. The new structures will also have reliability enhancements to protect the system from damage due to severe weather, including floods.



*Example of structure to be installed*

The OPGW that is being installed on this line enables faster and more reliable communication between Eversource's substations (the communication is not related to any cellular or telecom service). This communication allows for increased visibility of our system, quicker response times for system issues, increased automation, reduces outages and their length, and, overall, improves reliability across the electric system.

## What You Can Expect

We intend to rebuild the line in the same location it is today, with some variations. We attempted to minimize structure height increases wherever possible, while ensuring current electrical standards and safety clearances are met and while also balancing other important considerations, such as environmental impacts. Regional project information sessions will be scheduled in the coming months where you can learn more about this project from team members who will be available to provide information and answer your questions.

## Anticipated Project Schedule

*(schedule is subject to change due to weather or other unexpected circumstances)*

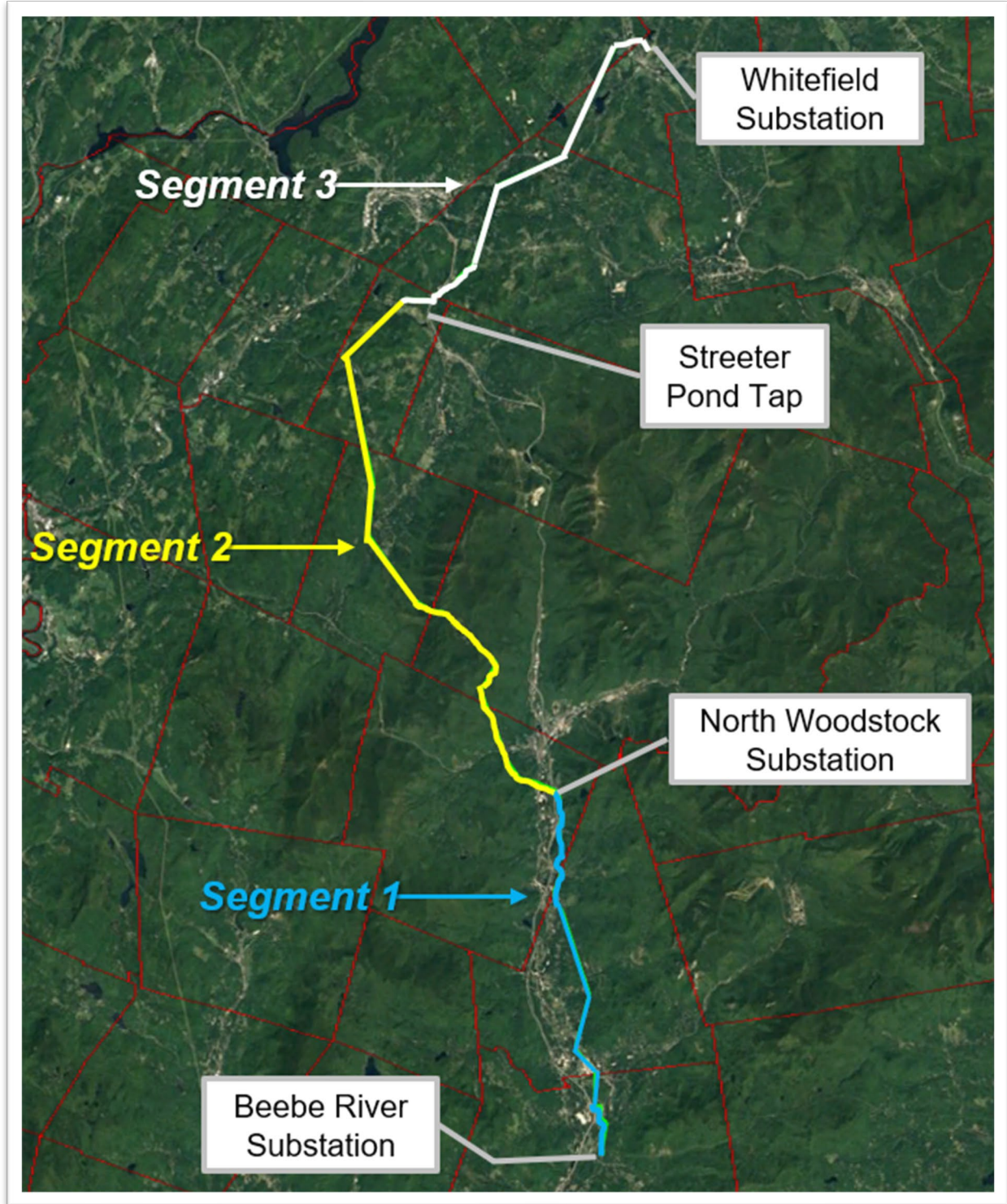
- Project Information Sessions: 3<sup>rd</sup> Quarter 2023
- Permitting: Beginning 2<sup>nd</sup> Quarter 2023
- Construction: 3<sup>rd</sup> Quarter 2024 through 4<sup>th</sup> Quarter 2026 (duration includes all three segments)
- Site Restoration: Ongoing through construction for stabilization and upon completion

*Project Representatives are available to answer your questions.  
Please contact us at your convenience.*

Call 1-888-926-5334 or email [NHProjectsInfo@eversource.com](mailto:NHProjectsInfo@eversource.com) for more information

# Beebe River to Whitefield (X178) Line Rebuild Project

Improving the Reliability of the Electric System across New Hampshire



*The project will take place along the white, yellow, and blue line.*