



**LEGEND:**

Y170 LINE: 

Y170 STR: 

| DWG REV | EPN/DESCRIPTION | CONT/PE# | DATE     | DRN | CHKD | APPR |
|---------|-----------------|----------|----------|-----|------|------|
| 0       | ISSUED TO DOE   |          | 08/01/23 | NEB | JJD  | CRP  |

**EVERSOURCE ENERGY**

Y170, 115kV LINE & 386A, 34.5kV LINE  
STATE OWNED LAND & PUBLIC WATER CROSSING  
ROCHESTER, MILTON NEW HAMPSHIRE  
EXHIBIT 1

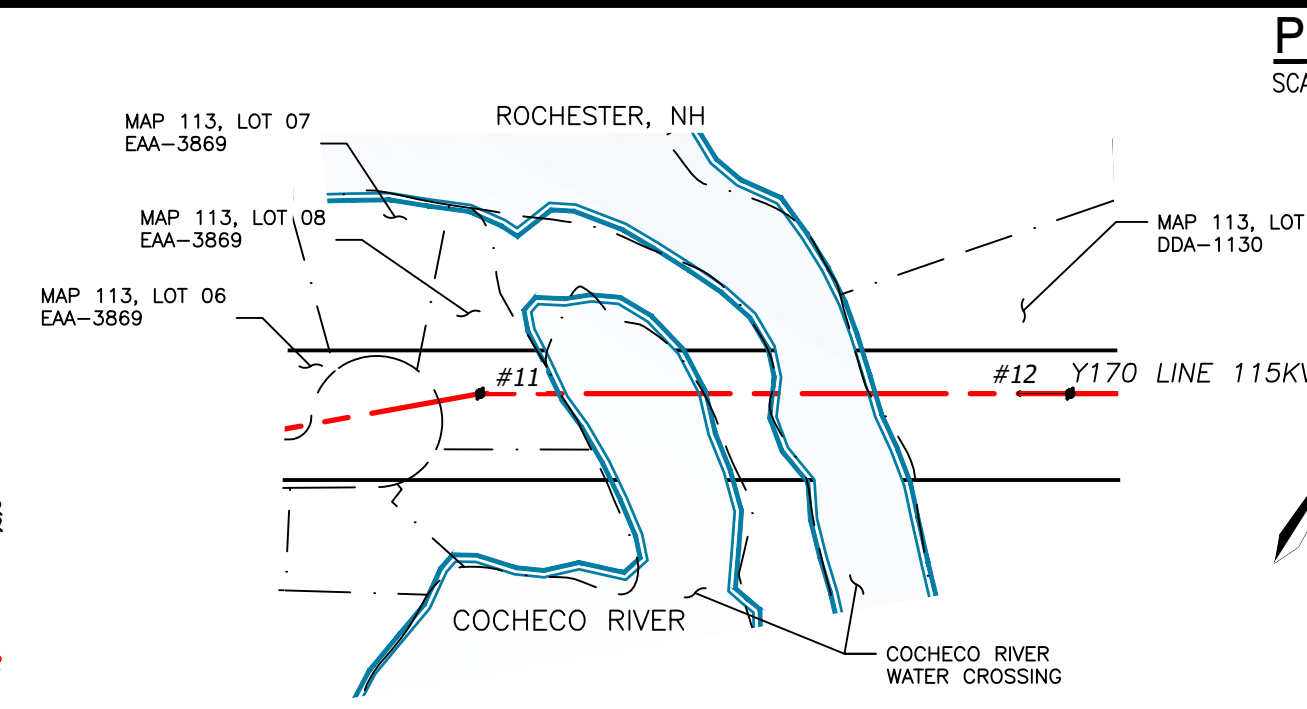
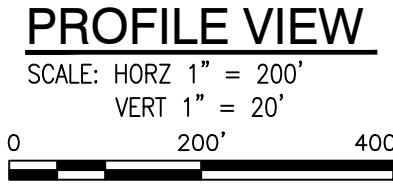
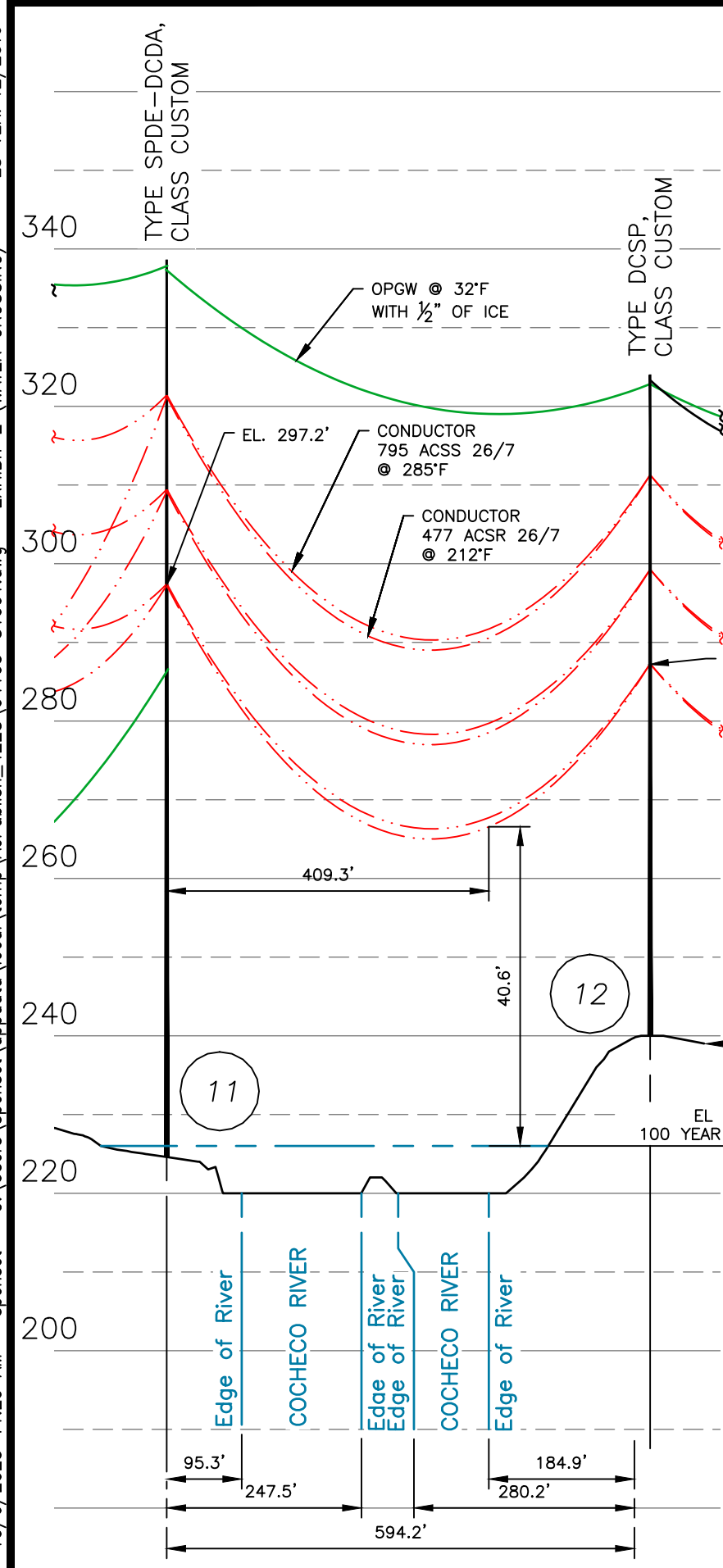
|                 |   |
|-----------------|---|
| T               | A |
| DRAWN<br>NEB    |   |
| ENGINEER<br>CRP |   |
| CHECKED<br>JJD  |   |
| APPROVED<br>CRP |   |
| DATE<br>5/15/23 |   |

SCALE  
1" = 5000'

FILE: 04103-81001.DWG  
IMAGE:

DRAWING NO.  
04103-81001

10/6/2023 11:29 AM - spensct - C:\Users\spensct\appdata\local\temp\AcPublish\_4228\04103-81001.dwg - EXHIBIT 2 (WATER CROSSING) ES VER: 12/2016



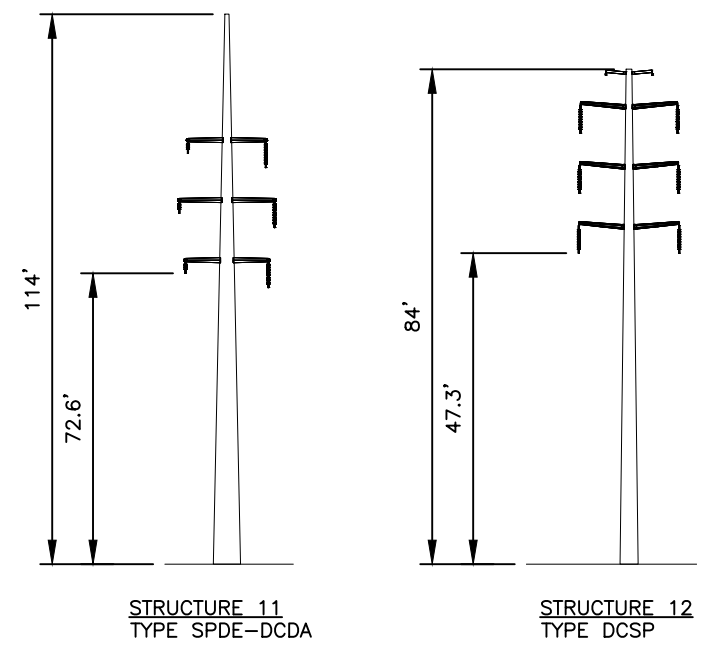
**PLAN VIEW**  
SCALE: 1" = 200'

**LEGEND:**

- #11 STRUCTURE
- Y170 LINE 115KV LINE, Q OF CONSTRUCTION
- LIMITS OF EVERSOURCE RIGHT OF WAY
- PROPERTY LINE
- WATERBODY

| STRUCTURE LOCATION |              |             |
|--------------------|--------------|-------------|
| STRUCTURE          | LONGITUDE    | LATITUDE    |
| 11                 | -70.98641600 | 43.31474748 |
| 12                 | -70.98445635 | 43.31563756 |

| NESC VERTICAL CLEARANCE (FT) FROM TABLE 232.1, C2-2012                         |       |        |  |
|--------------------------------------------------------------------------------|-------|--------|--|
| NATURE OF SURFACE UNDERNEATH WIRES, CONDUCTORS OR CABLES                       | 115kV | 34.5kV |  |
| WATER AREAS NOT SUITABLE FOR SAIL BOATING OR WHERE SAIL BOATING IS PROHIBITED. | 18.6  | 17.0   |  |



**STRUCTURE 11**  
TYPE SPDE-DCDA  
STR 11: IS AN EVERSOURCE TYPE SPDE-DCDA, DOUBLE CIRCUIT STEEL DAVIT ARM, VERTICAL CONFIG.

**STRUCTURE 12**  
TYPE DCSP  
STR 12: IS AN EVERSOURCE TYPE DCSP, DOUBLE CIRCUIT STEEL DAVIT ARM, VERTICAL CONFIG.

**STRUCTURE DETAIL NOTES:**

SCALE: NTS

1. PARCEL INFORMATION PROVIDED BY NH GRANIT.
2. ELEVATIONS REFERENCED TO THE NORTH AMERICAN VERTICAL DATUM OF 1988.
3. THE 100 YEAR FLOOD ELEVATION FROM FEMA FLOOD MAP SERVICE CENTER, NATIONAL FLOOD HAZARD LAYER FIRMETTE, 33017C0211D, EFFECTIVE 5/17/2005.

| CABLE SCHEDULE |               |                                |                         |           |          |            |
|----------------|---------------|--------------------------------|-------------------------|-----------|----------|------------|
| WIRE           | QTY OF CABLES | DESCRIPTION                    | DESIGN CONDITIONS       |           |          |            |
|                |               |                                | MAX DESIGN TENSION (lb) | TEMP (°F) | ICE (in) | WIND (psf) |
| CONDUCTOR Y170 | 3             | ACSS, 795 kcmil 26/7, DRAKE    | 7000                    | 0         | 0.5      | 4          |
| CONDUCTOR 386A | 3             | ACSR, 477 kcmil 26/7, HAWK     | 5000                    | 0         | 0.5      | 4          |
| OPGW           | 1             | 24F #0.646" BRUGG 93AY68ACS-1C | 5300                    | 0         | 0.5      | 4          |

**EVERSOURCE ENERGY**

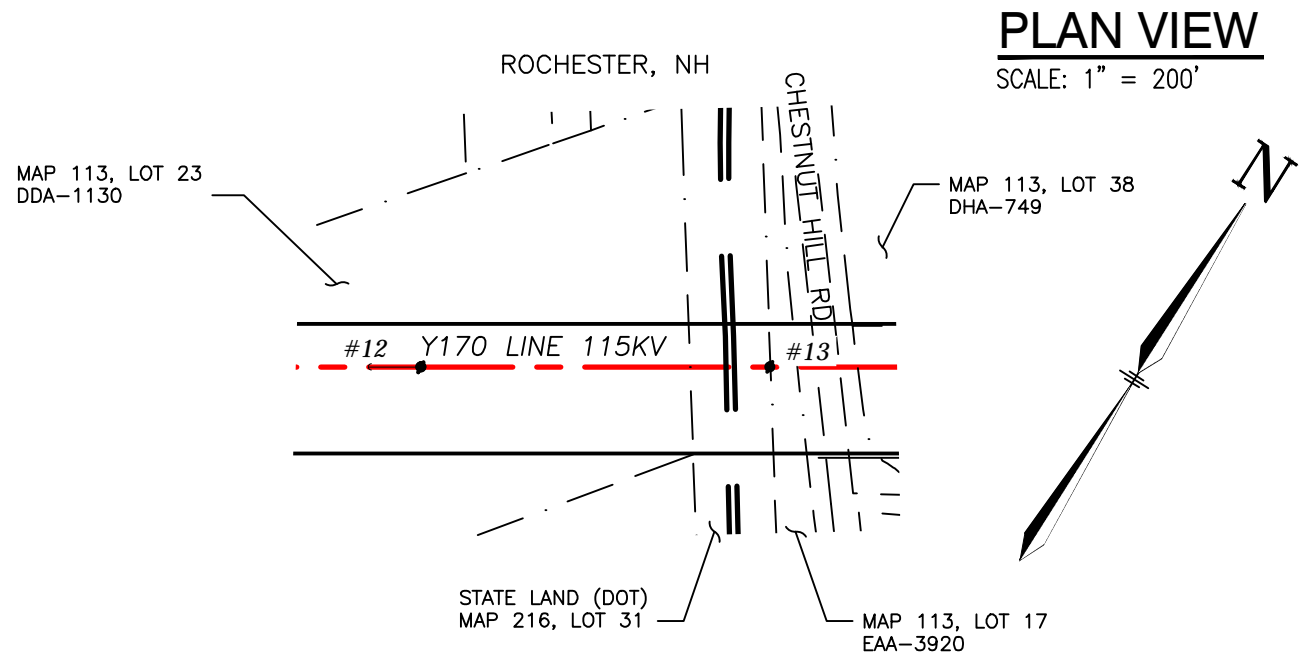
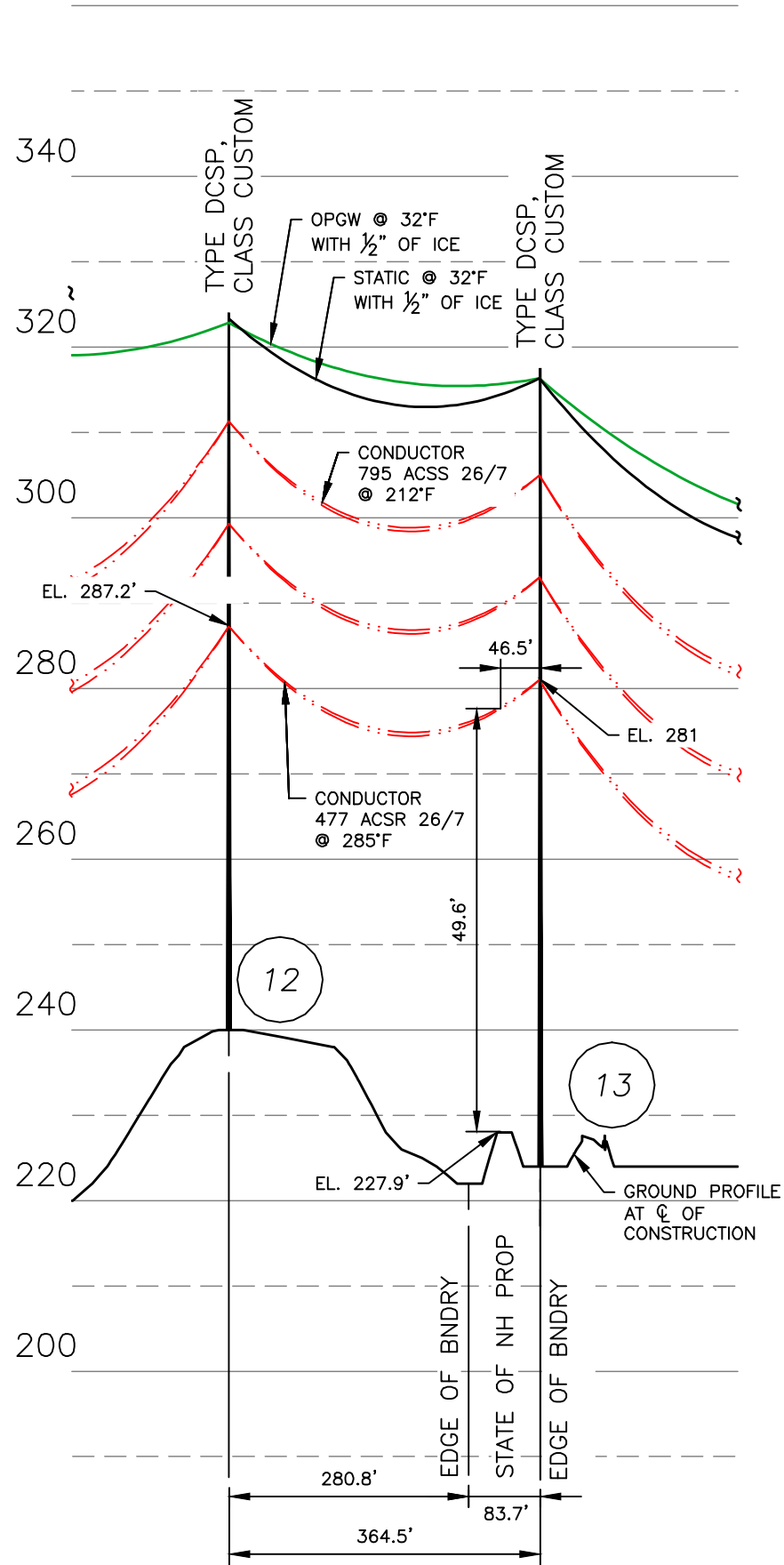
Y170, 115kV LINE & 386A, 34.5kV LINE  
WATER CROSSING  
ROCHESTER, NEW HAMPSHIRE  
EXHIBIT 2

|                 |   |
|-----------------|---|
| DRAWN<br>NEB    | T |
| ENGINEER<br>CRP | A |
| CHECKED<br>JJD  |   |
| APPROVED<br>CRP |   |
| DATE<br>5/15/23 |   |

DRAWING NO.  
**04103-81001**

| DWG REV | ISSUED TO DOE | EPN/DESCRIPTION | CONT/PE# | DATE     | DRN | CHKD | APPR |
|---------|---------------|-----------------|----------|----------|-----|------|------|
| 0       |               |                 |          | 08/01/23 | NEB | JJD  | CRP  |

10/6/2023 1:14 PM - spensct - N:\ADEPT WORK AREA\NH WORK AREA\SPENSCT\115KV MILESHEET WORK...04103-82001.dwg - EXHIBIT 3 (RR CROSSING) 12/2016



**PLAN VIEW**  
SCALE: 1" = 200'

**LEGEND:**

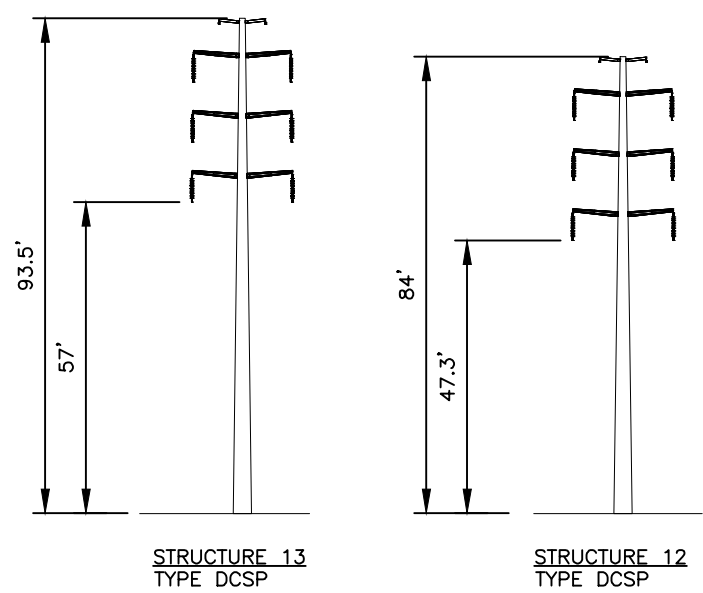
|  |                 |                                   |
|--|-----------------|-----------------------------------|
|  | #13             | STRUCTURE                         |
|  | Y170 LINE 115KV | LINE, &#246; OF CONSTRUCTION      |
|  |                 | LIMITS OF EVERSOURCE RIGHT OF WAY |
|  |                 | PROPERTY LINE                     |
|  |                 | RAILROAD (SHOWING LIMITS OF ROW)  |
|  |                 | ROAD, PAVED                       |

**STRUCTURE LOCATION**

| STRUCTURE | LONGITUDE    | LATITUDE    |
|-----------|--------------|-------------|
| 12        | -70.98445635 | 43.31563756 |
| 13        | -70.98191067 | 43.31679073 |

**NESC VERTICAL CLEARANCE (FT) FROM TABLE 232.1, C2-2012**

| NATURE OF SURFACE UNDERNEATH WIRES, CONDUCTORS OR CABLES | 115kV | 34.5kV |
|----------------------------------------------------------|-------|--------|
| TRACK RAILS OF RAILROADS                                 | 28.1  | 26.5   |



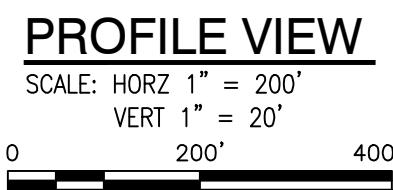
**STRUCTURE 13**  
TYPE DCSP  
STR 13: IS AN EVERSOURCE TYPE DCSP, DOUBLE CIRCUIT STEEL DAVIT ARM, VERTICAL CONFIG.

**STRUCTURE 12**  
TYPE DCSP  
STR 12: IS AN EVERSOURCE TYPE DCSP, DOUBLE CIRCUIT STEEL DAVIT ARM, VERTICAL CONFIG.

**STRUCTURE DETAIL**  
SCALE: NTS

**CABLE SCHEDULE**

| WIRE           | QTY OF CABLES | DESCRIPTION                    | DESIGN CONDITIONS       |           |          |            |
|----------------|---------------|--------------------------------|-------------------------|-----------|----------|------------|
|                |               |                                | MAX DESIGN TENSION (lb) | TEMP (°F) | ICE (in) | WIND (psf) |
| CONDUCTOR Y170 | 3             | ACSS, 795 kcmil 26/7, DRAKE    | 7000                    | 0         | 0.5      | 4          |
| CONDUCTOR 386A | 3             | ACSR, 477 kcmil 26/7, HAWK     | 5000                    | 0         | 0.5      | 4          |
| OPGW           | 1             | 24F #0.646" BRUGG 93AY68ACS-1C | 5300                    | 0         | 0.5      | 4          |
| STATIC         | 1             | ACSR, 4/0 6/1, PENGUIN         | 2500                    | 0         | 0.5      | 4          |



**NOTES:**

- PARCEL INFORMATION PROVIDED BY NH GRANIT.
- ELEVATIONS REFERENCED TO THE NORTH AMERICAN VERTICAL DATUM OF 1988.

| DWG REV | ISSUED FOR     | DATE     | DRN | CHKD | APPR |
|---------|----------------|----------|-----|------|------|
| 0       | ISSUED FOR DOE | 08/01/23 | NEB | JJD  | CRP  |

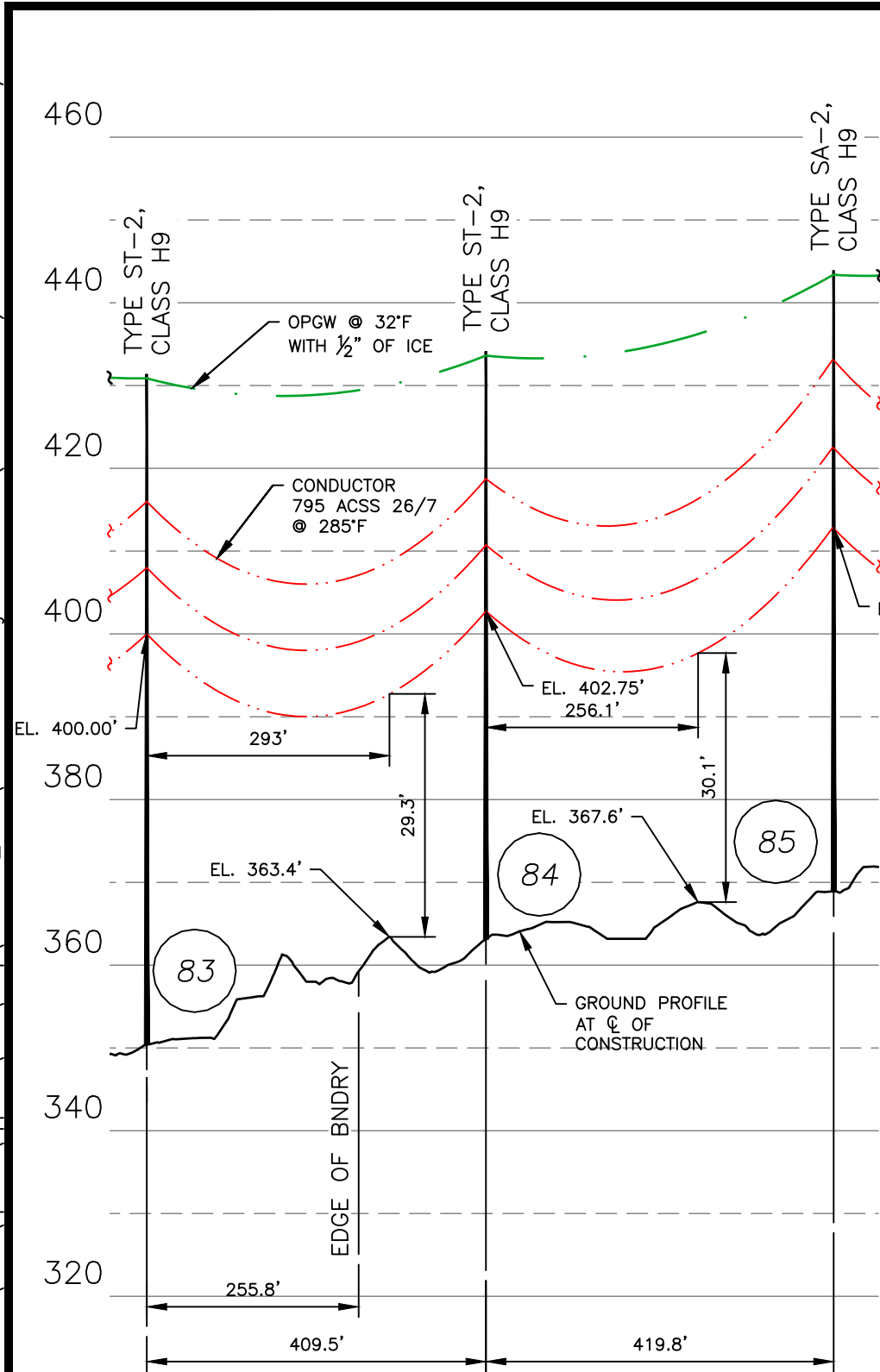
**EVERSOURCE ENERGY**

Y170, 115kV LINE & 386A, 34.5kV LINE  
STATE LAND CROSSING  
ROCHESTER, NEW HAMPSHIRE  
EXHIBIT 3

|          |         |
|----------|---------|
| T        | A       |
| DRAWN    | NEB     |
| ENGINEER | CRP     |
| CHECKED  | JJD     |
| APPROVED | CRP     |
| DATE     | 4/12/23 |

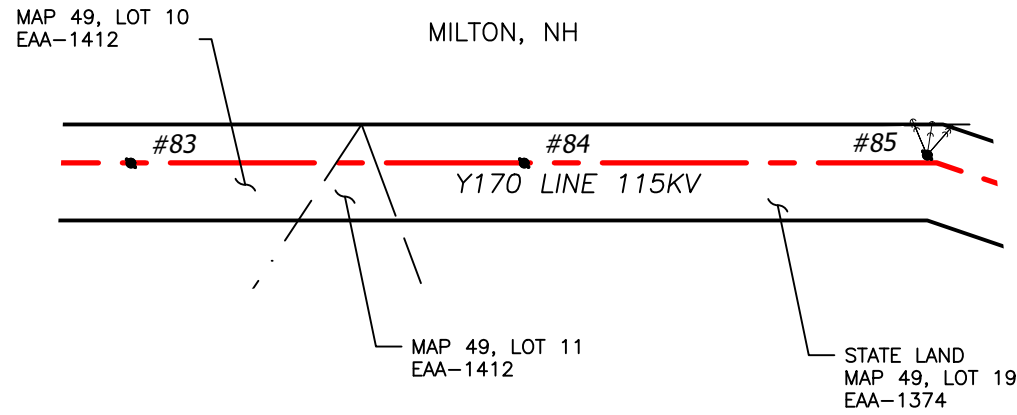
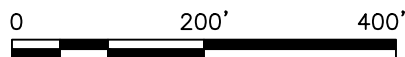
SCALE: AS SHOWN  
FILE: 04103-82001.DWG  
DRAWING NO.: 04103-82001

8/1/2023 4:24 PM - JoshD - C:\Users\spensct\appdata\local\temp\AcPublish\_4228\04103-82002.dwg - EXHIBIT 4 (LAND CROSSING) ES VER: 12/2016



**PROFILE VIEW**

SCALE: HORZ 1" = 200'  
VERT 1" = 20'

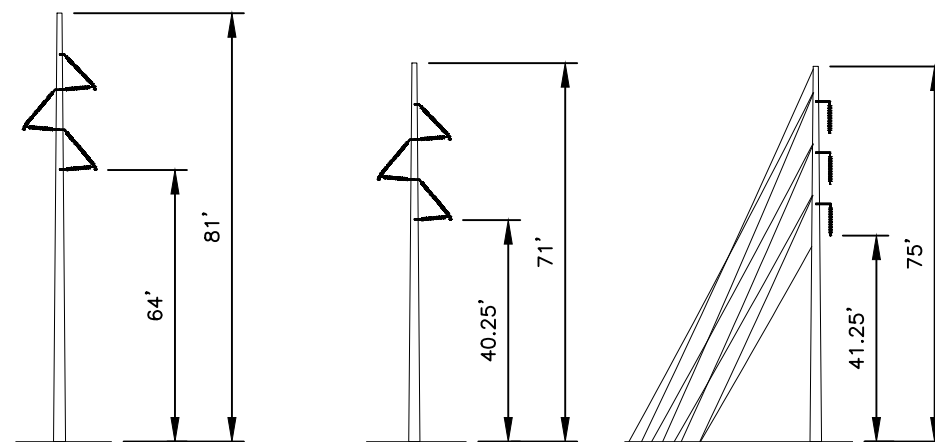


**PLAN VIEW**

SCALE: 1" = 200'

**LEGEND:**

- #83 STRUCTURE
- Y170 LINE 115KV LINE, Q OF CONSTRUCTION
- LIMITS OF EVERSOURCE RIGHT OF WAY
- PROPERTY LINE



**STRUCTURE 83**  
TYPE ST-2

STR 83: IS AN EVERSOURCE TYPE ST-2, SINGLE CIRCUIT STEEL POLE TANGENT, DELTA CONFIG.

**STRUCTURE 84**  
TYPE ST-2

STR 84: IS AN EVERSOURCE TYPE ST-2, SINGLE CIRCUIT STEEL POLE TANGENT, DELTA CONFIG.

**STRUCTURE 85**  
TYPE SA-2

STR 85: IS AN EVERSOURCE TYPE SA-2, SINGLE CIRCUIT STEEL POLE VERT. ANGLE CONFIG.

**STRUCTURE DETAIL**

SCALE: NTS

| STRUCTURE LOCATION |              |             |
|--------------------|--------------|-------------|
| STRUCTURE          | LONGITUDE    | LATITUDE    |
| 83                 | -70.99175728 | 43.37646355 |
| 84                 | -70.99247753 | 43.37745672 |
| 85                 | -70.99324259 | 43.37846429 |

| NESC VERTICAL CLEARANCE (FT)<br>FROM TABLE 232.1, C2-2012                                                                          |       |
|------------------------------------------------------------------------------------------------------------------------------------|-------|
| NATURE OF SURFACE UNDERNEATH WIRES, CONDUCTORS OR CABLES                                                                           | 115kV |
| OTHER AREAS TRAVERSED BY VEHICLES, SUCH AS CULTIVATED, GRAZING, FOREST, AND ORCHARD LANDS, INDUSTRIAL SITES, COMMERCIAL SITES, ETC | 20.1  |

| CABLE SCHEDULE |               |                                |                         |           |          |            |
|----------------|---------------|--------------------------------|-------------------------|-----------|----------|------------|
| WIRE           | QTY OF CABLES | DESCRIPTION                    | DESIGN CONDITIONS       |           |          |            |
|                |               |                                | MAX DESIGN TENSION (lb) | TEMP (°F) | ICE (in) | WIND (psf) |
| CONDUCTOR      | 3             | ACSS, 795 kcmil 26/7, DRAKE    | 7000                    | 0         | 0.5      | 4          |
| OPGW           | 1             | 24F #0.646" BRUGG 93AY68ACS-1C | 5300                    | 0         | 0.5      | 4          |

**NOTES:**

- PARCEL INFORMATION PROVIDED BY NH GRANIT.
- ELEVATIONS REFERENCED TO THE NORTH AMERICAN VERTICAL DATUM OF 1988.

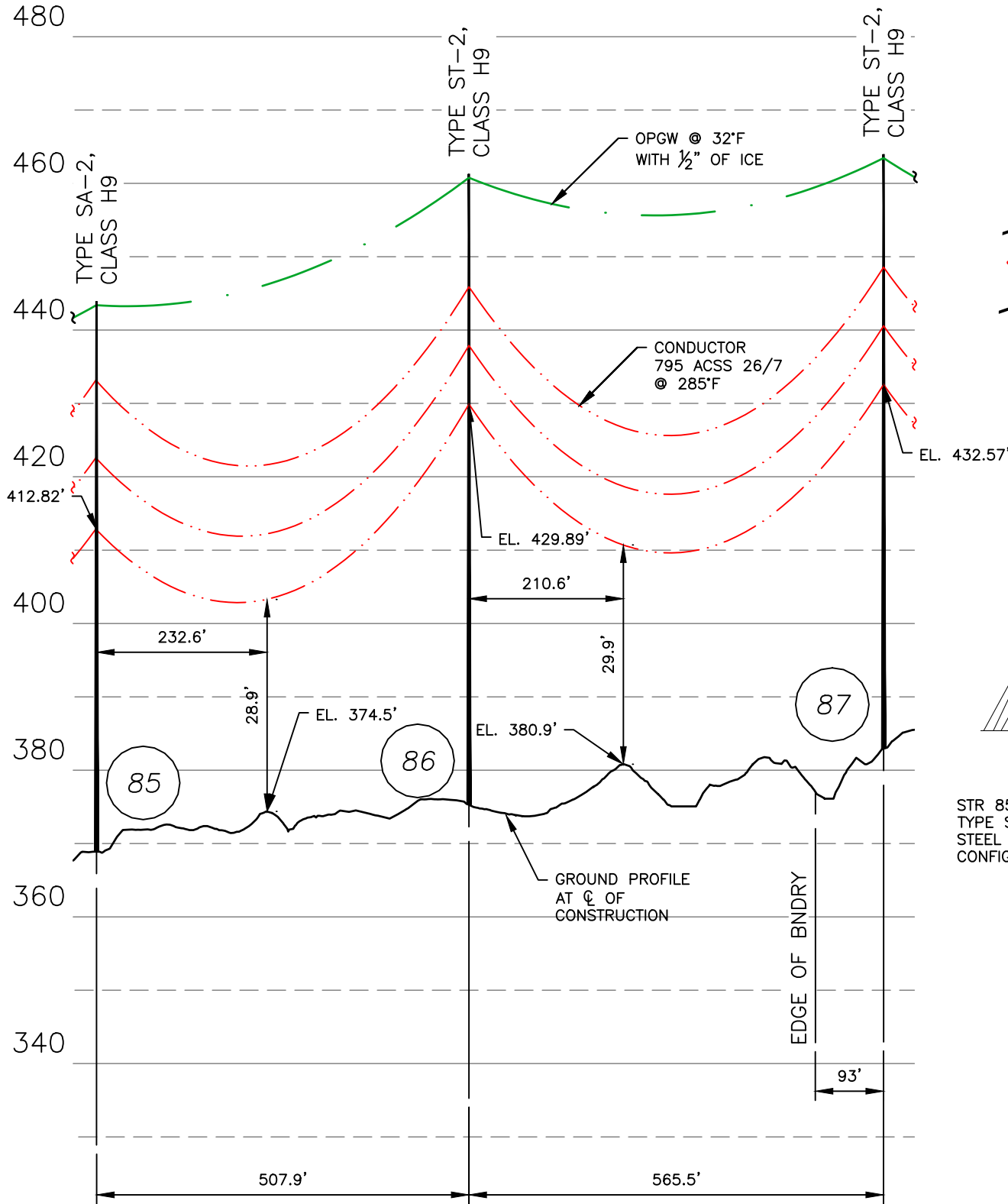
|         |                 |          |      |     |      |
|---------|-----------------|----------|------|-----|------|
| 0       | ISSUED TO DOE   | 08/01/23 | NEB  | JJD | CRP  |
| DWG REV | EPN/DESCRIPTION | CONT/PE# | DATE | DRN | CHKD |

EVERSOURCE ENERGY

Y170, 115kV LINE  
STATE LAND CROSSING  
MILTON, NEW HAMPSHIRE  
EXHIBIT 4

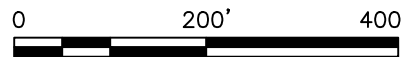
|                 |                            |
|-----------------|----------------------------|
| DRAWN<br>NEB    | T   A                      |
| ENGINEER<br>CRP | DRAWING NO.<br>04103-82002 |
| CHECKED<br>JJD  | DATE<br>5/15/23            |
| APPROVED<br>CRP | SCALE<br>AS SHOWN          |

FILE: 04103-82002.DWG  
IMAGE:



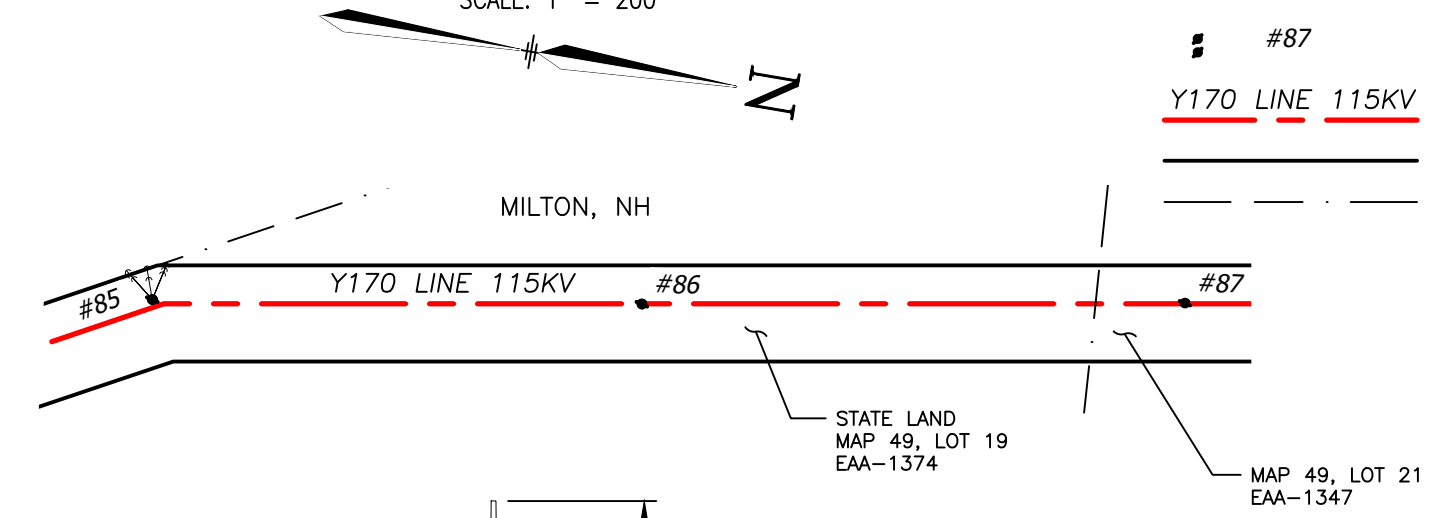
**PROFILE VIEW**

SCALE: HORZ 1" = 200'  
VERT 1" = 20'



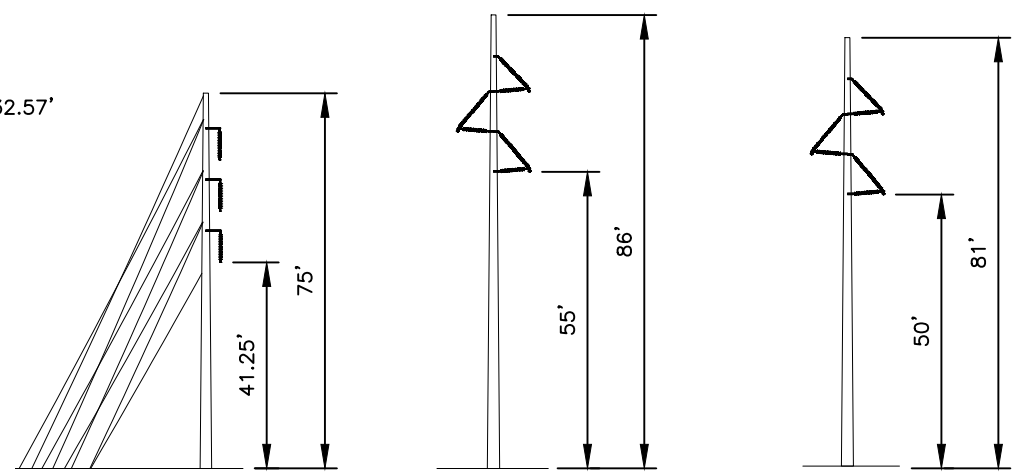
**PLAN VIEW**

SCALE: 1" = 200'



**LEGEND:**

- #87 STRUCTURE
- Y170 LINE 115KV LINE, Q OF CONSTRUCTION
- LIMITS OF EVERSOURCE RIGHT OF WAY
- PROPERTY LINE



**STRUCTURE 85**  
TYPE SA-2  
STR 85: IS AN EVERSOURCE TYPE SA-2, SINGLE CIRCUIT STEEL POLE VERT. ANGLE CONFIG.

**STRUCTURE 86**  
TYPE ST-2  
STR 86: IS AN EVERSOURCE TYPE ST-2, SINGLE CIRCUIT STEEL POLE TANGENT, DELTA CONFIG.

**STRUCTURE 87**  
TYPE ST-2  
STR 87: IS AN EVERSOURCE TYPE ST-2, SINGLE CIRCUIT STEEL POLE TANGENT, DELTA CONFIG.

**STRUCTURE DETAIL**

SCALE: NTS

| STRUCTURE LOCATION |              |             |
|--------------------|--------------|-------------|
| STRUCTURE          | LONGITUDE    | LATITUDE    |
| 85                 | -70.99324259 | 43.37846429 |
| 86                 | -70.99353212 | 43.37984744 |
| 87                 | -70.99387604 | 43.38137852 |

| NESC VERTICAL CLEARANCE (FT)<br>FROM TABLE 232.1, C2-2012                                                                          |       |
|------------------------------------------------------------------------------------------------------------------------------------|-------|
| NATURE OF SURFACE UNDERNEATH WIRES, CONDUCTORS OR CABLES                                                                           | 115kV |
| OTHER AREAS TRAVERSED BY VEHICLES, SUCH AS CULTIVATED, GRAZING, FOREST, AND ORCHARD LANDS, INDUSTRIAL SITES, COMMERCIAL SITES, ETC | 20.1  |

| CABLE SCHEDULE |               |                                |                         |           |          |            |
|----------------|---------------|--------------------------------|-------------------------|-----------|----------|------------|
| WIRE           | QTY OF CABLES | DESCRIPTION                    | DESIGN CONDITIONS       |           |          |            |
|                |               |                                | MAX DESIGN TENSION (lb) | TEMP (°F) | ICE (in) | WIND (psf) |
| CONDUCTOR      | 3             | ACSS, 795 kcmil 26/7, DRAKE    | 7000                    | 0         | 0.5      | 4          |
| OPGW           | 1             | 24F #0.646" BRUGG 93AY68ACS-1C | 5300                    | 0         | 0.5      | 4          |

**NOTES:**

1. PARCEL INFORMATION PROVIDED BY NH GRANIT.
2. ELEVATIONS REFERENCED TO THE NORTH AMERICAN VERTICAL DATUM OF 1988.

|         |                 |          |      |     |      |
|---------|-----------------|----------|------|-----|------|
| 0       | ISSUED TO DOE   | 08/01/23 | NEB  | JJD | CRP  |
| DWG REV | EPN/DESCRIPTION | CONT/PE# | DATE | DRN | CHKD |

EVERSOURCE ENERGY

Y170, 115kV LINE  
STATE LAND CROSSING  
MILTON, NEW HAMPSHIRE  
EXHIBIT 5

|                   |                                 |                                   |
|-------------------|---------------------------------|-----------------------------------|
| SCALE<br>AS SHOWN | FILE: 04103-82002.DWG<br>IMAGE: | DRAWING NO.<br><b>04103-82002</b> |
|-------------------|---------------------------------|-----------------------------------|

|                 |                 |
|-----------------|-----------------|
| T               | A               |
| DRAWN<br>NEB    | ENGINEER<br>CRP |
| CHECKED<br>JJD  | APPROVED<br>CRP |
| DATE<br>5/15/23 |                 |